

Rover Gold G

Numerical control machining centres



 **BIESSE**
ALL IN ONE

Rover Gold G

A small investment for a big growth



Versions available:

Rover Gold G 1232

Rover Gold G 1532

Rover Gold G is the CNC machining center with gantry structure for all those manufacturers who want to automate their production. The rigidity and reliability of the gantry structure are combined with the compactness and flexibility of the working centre. Specially designed for panel processing, Rover Gold G can satisfy all requests of manufacturers and middle-sized companies with special parts department who want to grow with a small investment.



Rover Gold G

Many operations for a high quality product

Machining of furniture components/furnishings.



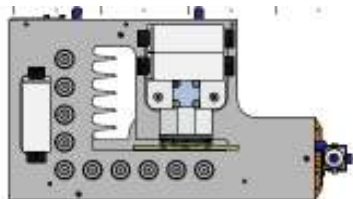
Machining of core panel and element door.



Rover Gold G

The Biesse Quality in many configurations

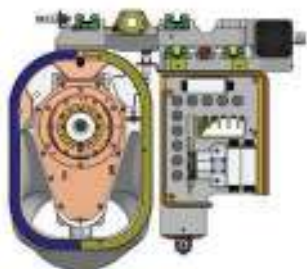
Many configurations to choose from



BH 17 Boring Head (10 Vertical Drills + 6 Horizontal Drills + 1 Saw blade along X)



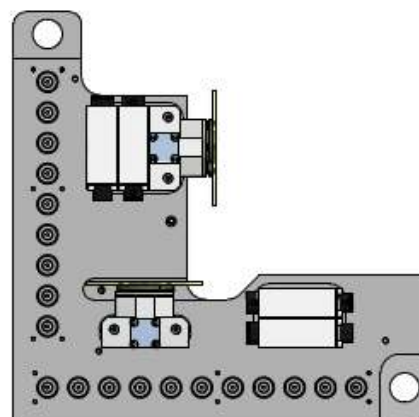
BH 17 Boring Head (10 Vertical Drills + 6 Horizontal Drills + 1 Saw blade along X) + 6kW Vertical Router with ER 32 Collet



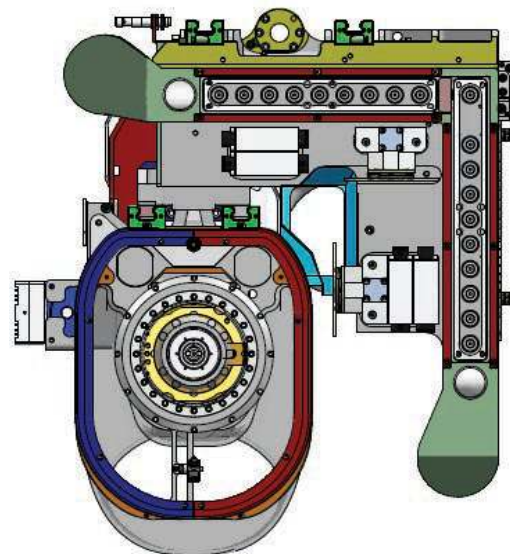
BH 17 Boring Head (10 Vertical Drills + 6 Horizontal Drills + 1 Saw blade along X) + Electrospindle 13.2kW ISO 30 / HSK F63



BH 17 Boring Head (10 Vertical Drills + 6 Horizontal Drills + 1 Saw blade along X) + Electrospindle 13.2kW ISO 30 / HSK F63 + 5kW Horizontal Router with ER 32 Collet

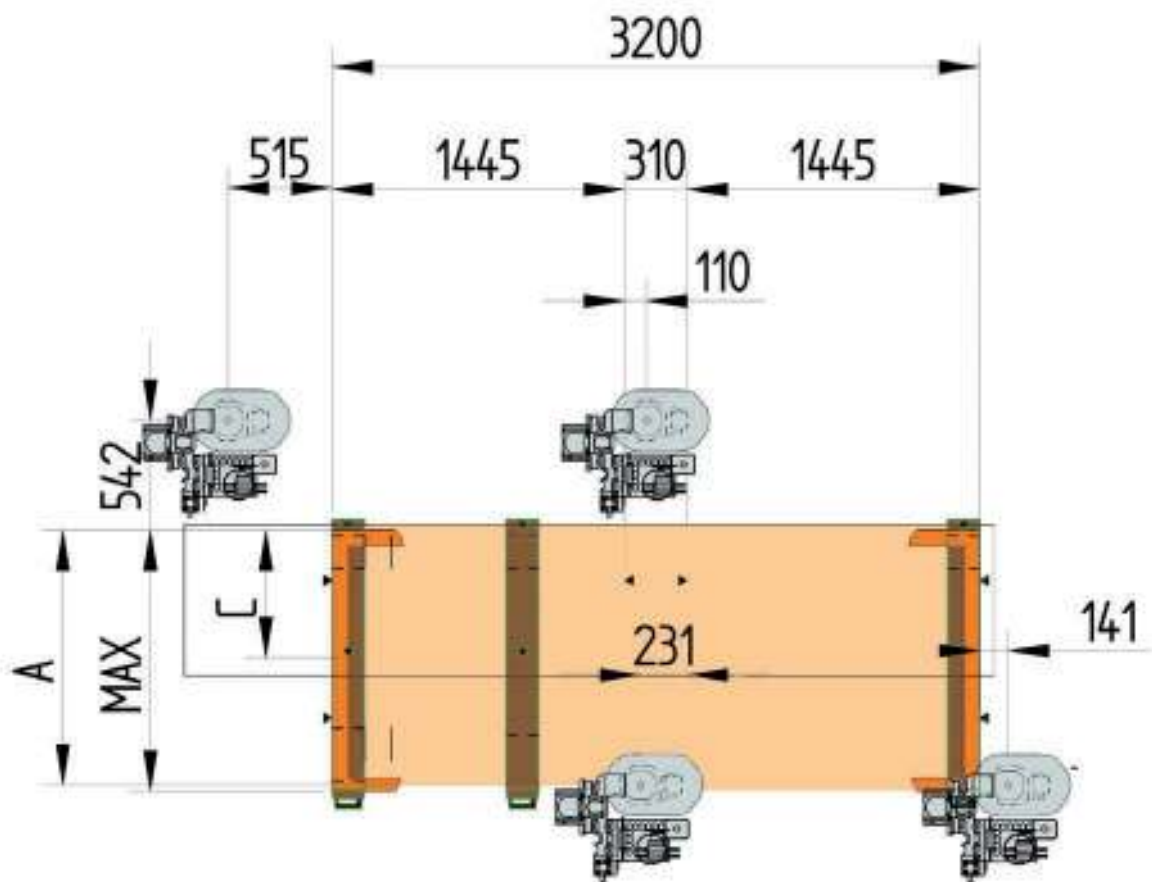


BH 30 Boring Head (20 Vertical Drills + 8 Horizontal Drills + 2 Saw blades along X & Y)



BH 30 Boring Head (20 Vertical Drills + 8 Horizontal Drills + 2 Saw blades along X & Y) + Electrospindle 13.2kW ISO 30 / HSK F63 (

Working fields



	A*	C*	MAX*
	mm/inch	mm/inch	mm/inch
Rover Gold G 1232	1260/49.6	630/24.8	1290/50.7
Rover Gold G 1532	1560/61.4	780/30.7	1590/62.5

A* Max. reach of the electrospindle along Y

C* Distance between rear row of stops & central row of stops

MAX* Max. width of the loadable panel

Rover Gold G

Responding to every need

Aggregate to carry out any type of machining operation (optional).



Interpolating C axes for any type of aggregate (optional).



Revolving tool changer with 16 places. Installed on the X carriage, it allows to have tools and aggregates always available therefore reducing the tool change time.

Rover Gold G

The reliability of a consolidated technology

The ATS working table, result of the well-tested Biesse tradition, it is equipped with the pneumatic locking carriages and ensures an optimum locking of the pieces.



Many references for the processing of several pieces.

Ergonomic auxiliary vacuum outlet for customized jigs.



Rover Gold G

Maximum operator safety



Anti-Projection safety strips guarantee the full operation and total safety in accordance with regulations in force.



The photocell safety solution allows maximum use of pendulum working field.

Rover Gold G

On the operator's side



PC-based BH660 Numerical Control:

- Microsoft Windows operating system controlling the machine
- BiesseWorks user interface;
- axes real-time control;
- input/outputs management;
- real-time execution of machine logic;
- bar code reader ready;
- optional connection of a laser profile projector;
- specific machine function enabling buttons.

Ergonomic bollard for machine cycle start.



Dust suction hood adjustable from the NC.



Bar code scanner (optional).



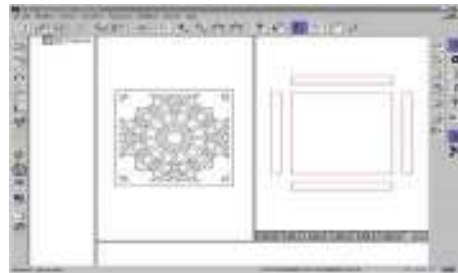
Key pad (optional) to manage the main machine functions like worktable set-up, axis speed, tooling lock/unlock, raising/lowering dust suction hood, raising/lowering of reference stops, start/stop/run programs and other important functions.

Simple and functional software



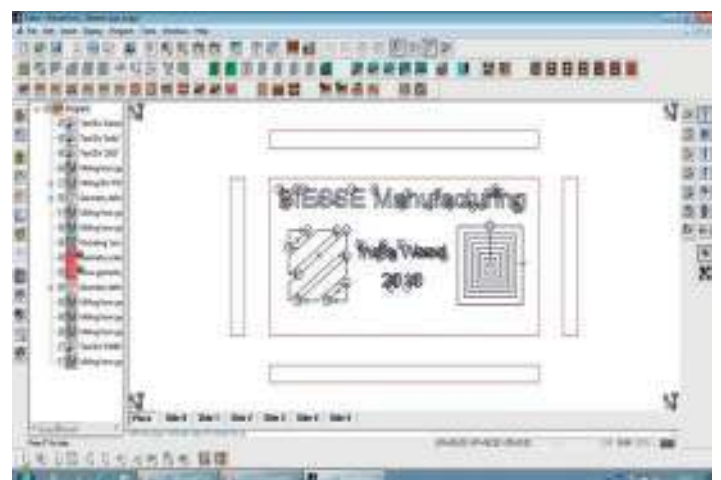
The BiesseWorks graphic interface makes full use of the operating methods typical of the Windows operating system:

- assisted graphic editor used to program machining operations;
- parametric programming and guided creation of parametric macros;
- import of CAD and other external software files in DXF and CID3 format.



The BiesseWorks Advanced version (optional)

- 3D simulation of tool path
- indicative calculation of machining time
- ability to create rotated or circular virtual faces
- pocketing and text functions

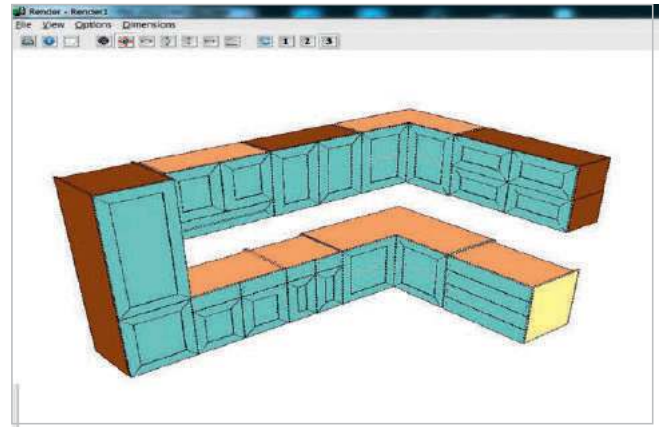
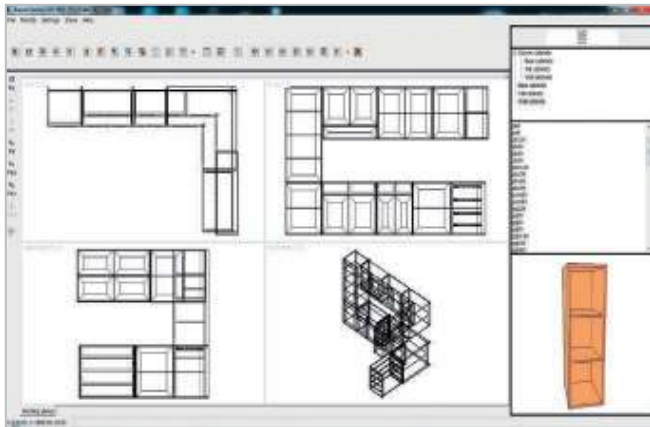


Rover Gold G

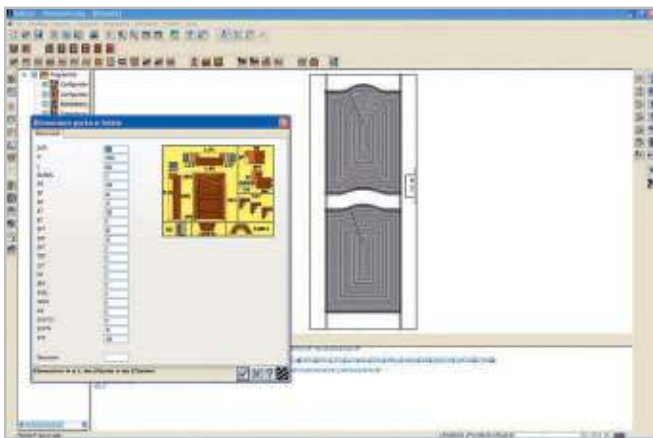
Simple and functional software



BiesseCabinetEVO is the software solution for the design of the interior cabinet with several possibilities for the visualization of the project and all the required workings (optional).

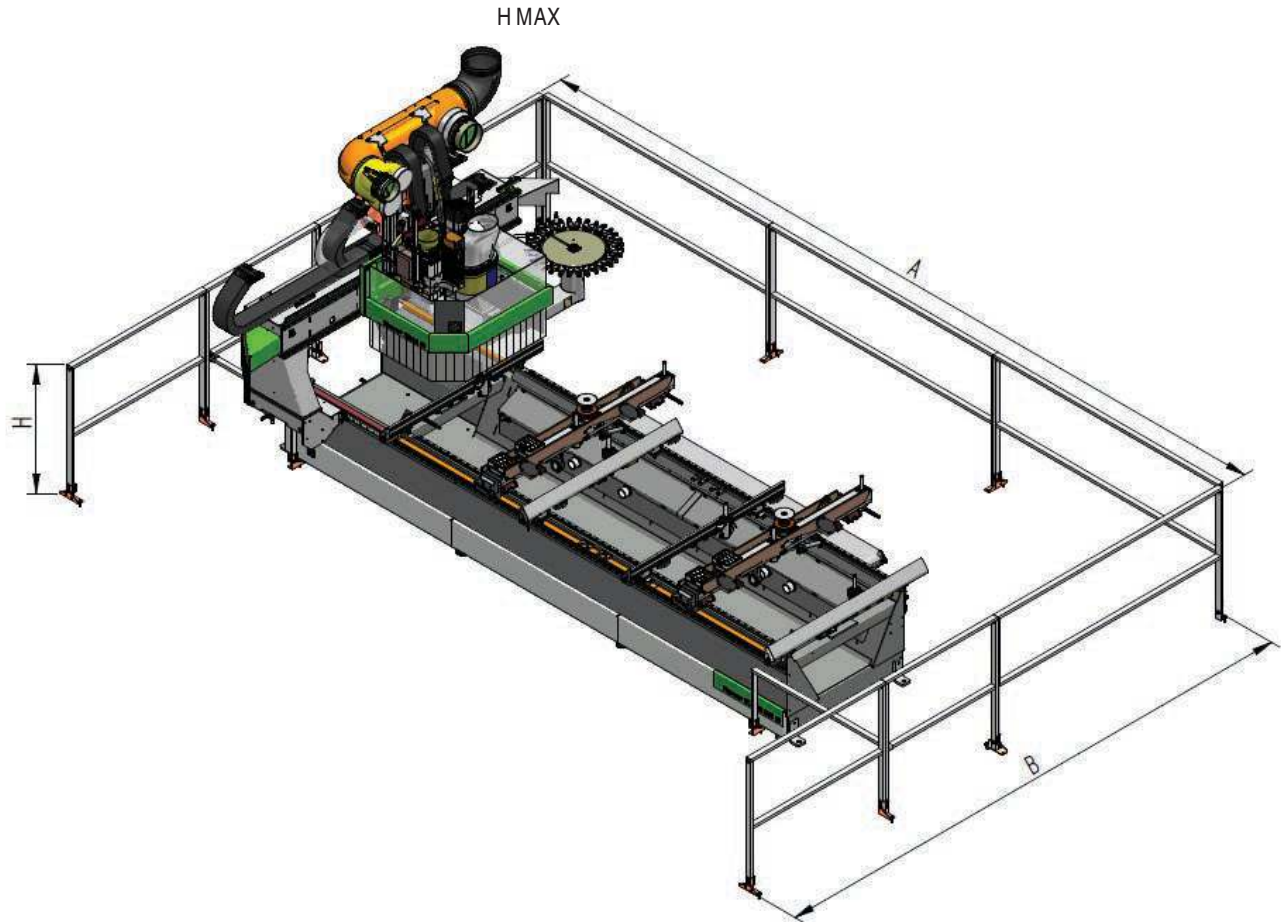


BiesseDoor is the entry-level solution for designing doors, special routed doors or door elements (optional).



Rover Gold G

Technical specifications



	A	B	H	H MAX
	mm/inch	mm/inch	mm/inch	mm/inch
Rover Gold G 1232	6065/238.7	4220/166.1	1000/39.37	2310/90.9
Rover Gold G 1532	6065/238.7	4460/175.5	1000/39.37	2310/90.9

	Rover Gold G 1232	Rover Gold G 1532
Axis speed X/Y/Z m/min	60/60/20	80/60/20
Vector speed m/min	84	104
Loadable piece mm/inch	165/6.4	
Z Axis stroke mm/inch	320/12.5	

Surface sound pressure level during machining in A (LpA) on machine with rotary vanes vacuum pump	Lpa=79dB(A) Lwa=96dB(A)
---	----------------------------

Surface sound pressure level during machining in A (LpA) and sound power level during machining in A (LwA) on machine with rotary claw vacuum pump	Lwa=83dB(A) Lwa=100dB(A)
--	-----------------------------

Measurement uncertainty K	dB(A) 4
---------------------------	---------

Tests were carried out in accordance with Regulations BS EN 848-3:2007, BS EN ISO 3746: 2009 (sound pressure) and BS EN ISO 11202: 2009 (sound pressure in the operator's working position) with run of panels. The noise levels given here are emission levels and do not necessarily represent safe working levels. Although there is a relationship between output levels and exposure levels, the output levels cannot be reliably used to determine whether additional precautions are necessary or not. The factors determining the noise levels to which the operative personnel is exposed, include the length of exposure, the characteristics of the work area, as well as other sources of dust and noise (i.e. the number of machines and processes concurrently operating in the vicinity), etc. In any case, the information supplied will help the user of the machine to better assess the danger and the risks involved.

The Biesse Group

The Biesse Group operates in the production of machinery and systems for the wood, glass and stone working industries.

Starting right from its formation in 1969, the Biesse Group has stood out in world markets for its rapid growth and strong will to become a global partner for those companies belonging to its lines of business.

As a multinational company, the Biesse Group distributes its products through a network of 30 directly controlled subsidiaries and no fewer than 300 dealers and agents located in strategic markets enabling Biesse to cover more than 100 countries.

They guarantee specialized after-sales assistance to clients whilst at the same time carrying out market research in order to develop new products.

The constant drive for technological improvement, innovation and research has let Biesse develop modular solutions capable of meeting all the production requirements of its clients: from the design of turnkey plant for large industrials to single automated machines and work centres for small and medium enterprises and even down to the design and sale of single highly technological components.

The Biesse Group has over 2,800 employees and has production facilities in Italy and India with a total surface area of over 115.000 square metres.

The Biesse Group is made up of three divisions, each of which includes a productive unit concentrating on single product lines. The Wood Division designs and produces woodworking machinery for companies processing furniture, doors and windows, and offers a wide range of solutions for the entire industrial production cycle of wood and its by-products.

The Glass and Stone Division produces machines for companies processing glass, stone and, more generally speaking, for different industries such as interior decoration, building and the automobile industry.

The Mechatronic Division designs and produces highly technological components both for the Group and for the world market.





Printed on FSC certified paper



Biesse in the World

BIESSE BRIANZA

Alzate Brianza (Como), Italy
Tel. +39 031 630773_Fax +39 031 632298
brianza.commerciale@biesse.com - www.biesse.com

BIESSE TRIVENETO

Codogné (Treviso), Italy
Tel. +39 0438 793711_Fax +39 0438 795722
triveneto.commerciale@biesse.com - www.biesse.com

BIESSE DEUTSCHLAND GMBH

Elchingen, Germany
Tel. +49 (0)7308 96060_Fax +49 (0)7308 960666
Loehne, Germany
Tel. +49 (0)5731 744870_Fax +49 (0)5731 744 8711
info@biesse.de - www.biesse.de

BIESSE FRANCE

Brignais, France
Tél. +33 (0)4 78 96 73 29_Fax +33 (0)4 78 96 73 30
commercial@biessefrance.fr - www.biessefrance.fr

BIESSE IBERICA WOODWORKING MACHINERY SL

Gavà, Barcelona, Spain
+34 (0)93 2631000_Fax +34 (0)93 2633802
biesse@biesse.es - www.biesse.es

BIESSE GROUP UK LTD.

Daventry, Northants, United Kingdom
Tel. +44 1327 300366_Fax +44 1327 705150
info@biesse.co.uk - www.biesse.co.uk

BIESSE SCANDINAVIA

Representative Office of Biesse S.p.A.
Jönköping, Sweden
Tel. +46 (0)36 150380_Fax +46 (0)36 150380
biesse.scandinavia@telia.com
Spare parts:
Lindås, Sweden
Tel. +46 (0)471 25170_Fax +46 (0)471 25107
spareparts@biesse.se - www.biesse.com

BIESSE AMERICA

Charlotte, North Carolina, USA
Tel. +1 877 8 BIESSE
Fax +1 704 357 3130
sales@biesseamerica.com - www.biesseamerica.com

BIESSE ASIA PTE. LTD.

Singapore
Tel. +65 6368 2632_Fax +65 6368 1969
mail@biesse-asia.com.sg

BIESSE CANADA

Headquarters & Showroom: Mirabel, QC, Canada
Sales Office & Showroom: Toronto, ON, Canada
Showroom: Vancouver, BC, Canada
Tel. +1 800 598 3202
Fax +1 450 437 2859
sales@biessecanada.com - www.biessecanada.com

PT. BIESSE INDONESIA

Tangerang, Indonesia
Tel. +62 21 53150568_Fax +62 21 53150572

BIESSE KOREA LLC

Gyunggido, Korea
Tel. +82 32 3298780_Fax +82 32 3298781

BIESSE MALAYSIA SDN BHD

Selangor Darul Ehsan, Malaysia
Tel. +60 3 61401556_Fax +60 3 61402556
biessekl@tm.net.my

BIESSE TRADING (SHANGHAI) CO. LTD.

Subsidiary Office of Biesse Asia Pte. Ltd.
Shanghai, China
Tel. +86 21 5767 0387_Fax +86 21 5767 0391
mail@biesse-china.com.cn - www.biesse.cn

BIESSE RUSSIA

Representative Office of Biesse S.p.A.
Moscow, Russia
Tel. +7 495 9565661_Fax +7 495 6623662
sales@biesse.ru - www.biesse.ru

BIESSE GROUP AUSTRALIA PTY LTD.

Head Office
Sydney, New South Wales, Australia
Tel. +61 (0)2 9609 5355_Fax +61 (0)2 9609 4291
nsw@biesseaustralia.com.au - www.biesse.com.au
Melbourne, Victoria, Australia
Tel. +61 (0)3 9314 8411_Fax +61 (0)3 9314 8511
vic@biesseaustralia.com.au
Brisbane, Queensland, Australia
Tel. +61 (0)7 3622 4111_Fax +61 (0)7 3622 4112
qld@biesseaustralia.com.au
Adelaide, South Australia, Australia
Tel. +61 (0)8 8297 3622_Fax +61 (0)8 8297 3122
sa@biesseaustralia.com.au
Perth, Western Australia, Australia
Tel. +61 (0)8 9303 4611_Fax +61 (0)8 9303 4622
wa@biesseaustralia.com.au

BIESSE GROUP NEW ZEALAND PTY LTD.

Auckland, New Zealand
Tel. +64 9 278 1870_Fax +64 9 278 1885
sales@biessenewzealand.co.nz

BIESSE SCHWEIZ GMBH

Kriens, Swiss
Tel. +41 (0)41 3990909_Fax +41 (0)41 399 09 18
info@biesse.ch - www.biesse.ch

BIESSE MIDDLE EAST

Jebel Ali Free Zone, Dubai, UAE
Tel. +971 48878533_Fax +971 48878534
biessemiddleeast@biesse.com - www.biesse.com

BIESSE PORTUGAL WMP

Sintra, Portugal
Tel. +351 255094027_Fax +351 219758231
biesse@biesse.pt - www.biesse.com

BIESSE MANUFACTURING COMPANY PVT LTD.

Head office
Bangalore, India
Tel. +91 80 49489801/2/3_Fax +91 80 49489810
sales@biessemfg.com - www.biessemanufacturing.com
Mumbai, India
Tel. +91 22 28702622_Fax +91 22 28701417
Noida, Uttar Pradesh, India
Tel. +91 120 428 0661/2_Fax +91 120 428 0663
Hyderabad, India
Tel. +91 9611196938 / +91 9700340612
Chennai, India
Tel. +91 9980566759 / +91 9443812286

The proposed images and technical data are only indicative. The illustrated machines may be equipped with optional devices. Biesse Spa reserves the right to carry out modifications to its products and documentation without prior notice.

www.biesse.com