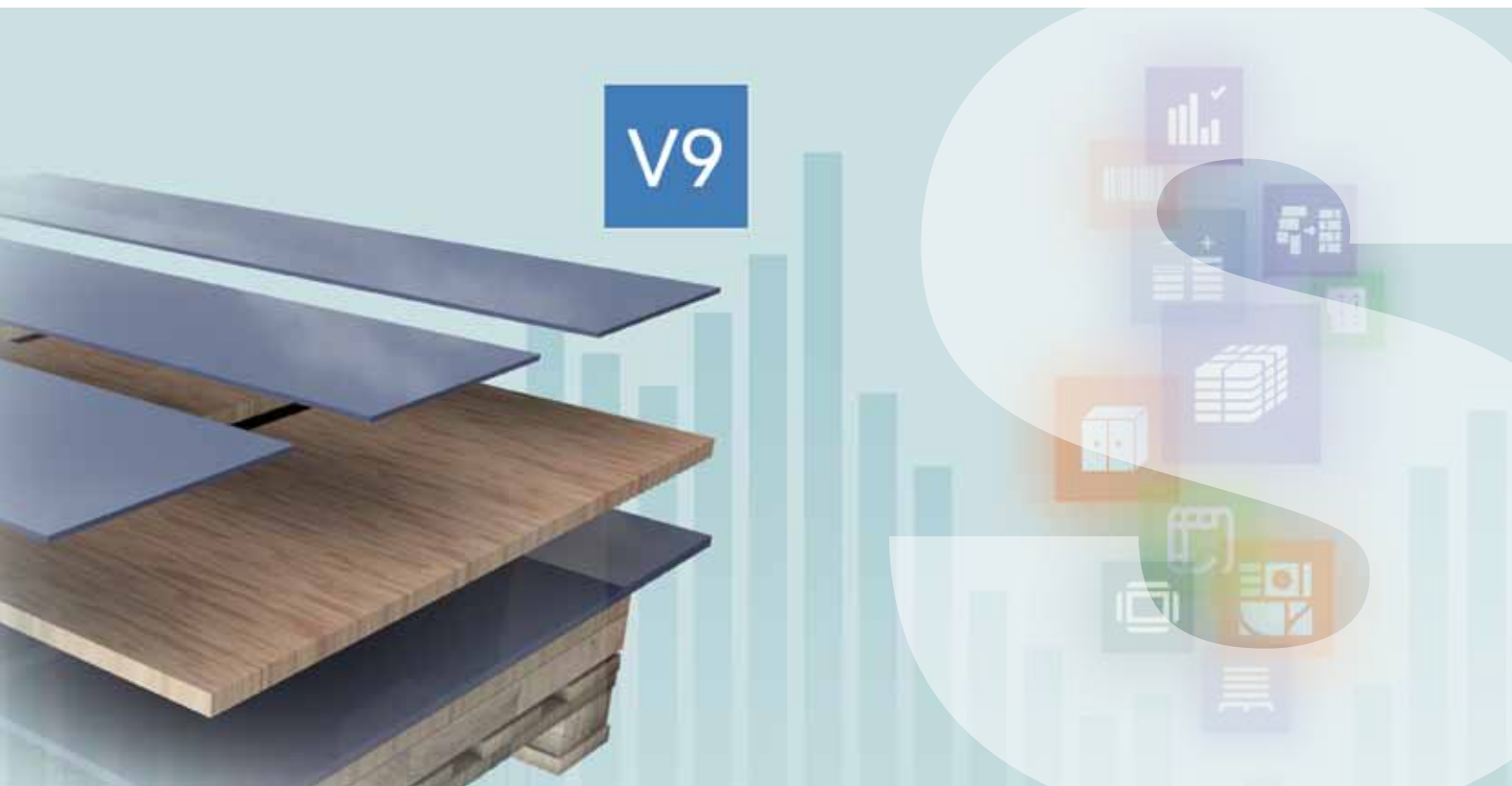


# Efficiency through planning



**Software: Cut Rite Version 9**  
2014/1

# Intelligent communication: Cut Rite

Cut Rite is a comprehensive optimisation program that significantly improves efficiency in cut-to-size operations. Cut Rite is compatible with ERP/PPC systems and so provides a seamless flow of information from quotation through to delivery. Cut Rite allows you to speed up your internal processes, to be in full control of all your data at all times and to cut your material and production costs. Put your trust in our expertise built on over 30 years of developing our own software.



## Contents

- 04 Customers' comments and new features
- 06 Which Cut Rite edition is right for you?
- 08 Success needs a sound footing – the basic features
- 10 Part library and label printing in the office
- 11 Order processing and variable parts lists
- 12 CNC programming and linking
- 13 Edging and laminating
- 14 Board stock control
- 15 Destacking



# Customers' comments and new features



"As our old optimisation program had reached its limits, we were looking for a software that would optimise according to both time and waste criteria and at the same time also manage offcuts. We found what we were looking for at HOLZMA: their Cut Rite optimisation software met all our requirements. Despite many years of experience, we realised that we really had no idea of what was actually possible in this field. Our new optimisation software not only communicates with the storage system and saw, but also with our self-programmed production data acquisition system. In addition, it takes care of labelling, thus enabling correct processing of the parts after they leave the saw – for example for in edging, in CNC processing or in packaging."

**Oliver Hunger**  
Hunger Möbelproduktions GmbH



"We wanted to optimise our internal processes and increase our independence. To achieve this, we opted for two new HOLZMA saws equipped with Power Concept and for Cut Rite. A decision that has paid off: these two saws, coupled with the new optimisation software, have made us far more flexible and effective in terms of panel cutting. Quality has improved, and we are now able to process standard parts in small batches while being much less reliant on our suppliers."

**Dirk Nolf**  
Steelcase Wernld AG, Technical Manager  
at the Durlangen plant



"We have been using Cut Rite for a long time. Relatively recently we decided to add the 'just-in-time optimisation' option. This option is integrated in the CADmatic machine control system and allows us to modify our order-based production runs, optimised with Cut Rite, directly at the saw if required. That is, we manually intervene in optimised runs in order to combine different orders on a material basis. One of the many advantages of 'just-in-time optimisation' is that it allows us to integrate offcuts."

**Wilhelm Hoetzel**  
Hoetzel Objekteinrichtungen GmbH



"A smooth workflow before and after the saw is just as important to us as in the cutting operation itself. This is where we count on Cut Rite. The optimisation software effectively supports our machine operators, ensures minimum wastage and optimises cutting processes in terms of time."

**Roland Waidele**  
Waidele GmbH & Co. KG



## Version 9 – new features

### Instant overview of key results in graphs and charts

Users can configure up to three charts to be assigned to each summary. The most important results are displayed in a dashboard. All in all, information can now be understood far more quickly and easily. The new navigation toolbar enables direct access to all major functions from any part of the program – eliminating the need to return to the main menu.

### Data evaluation: new editing and filter options

You can now edit your project data directly from the review runs screen. This allows you to make changes fast, without changing screen, and they will be reflected immediately in all dependent data. On top of this, improved filter and group items enable you to sort runs according to name, order number, week and many other criteria.

### Multi-core processor capability: up to eight times faster

Besides faster computing times, Cut Rite now provides a progress bar and an option to "keep the last result". This allows you to cancel the computing process at any time and to retrieve easily the last result obtained.

### Weight calculation

The weight of parts, boards and offcuts can be calculated. For every single part and material, by entering the material density in the board library.

### Easier and safer: user profiles

Each user can now create his own profile – with password, paths and much more. This makes it much easier to organise different users and to assign specific options to them.

### Managing areas and volumes

Ideal for customers with horizontal storage systems: the board library has been extended to work with 50-character codes, instead of the 25 characters previously possible, and includes a new field for "material density" which allows the weight of boards, parts, offcuts and waste to be calculated. This makes it easier to calculate, for example, how many trucks will be needed for a shipment.

### Calculated values in the summaries

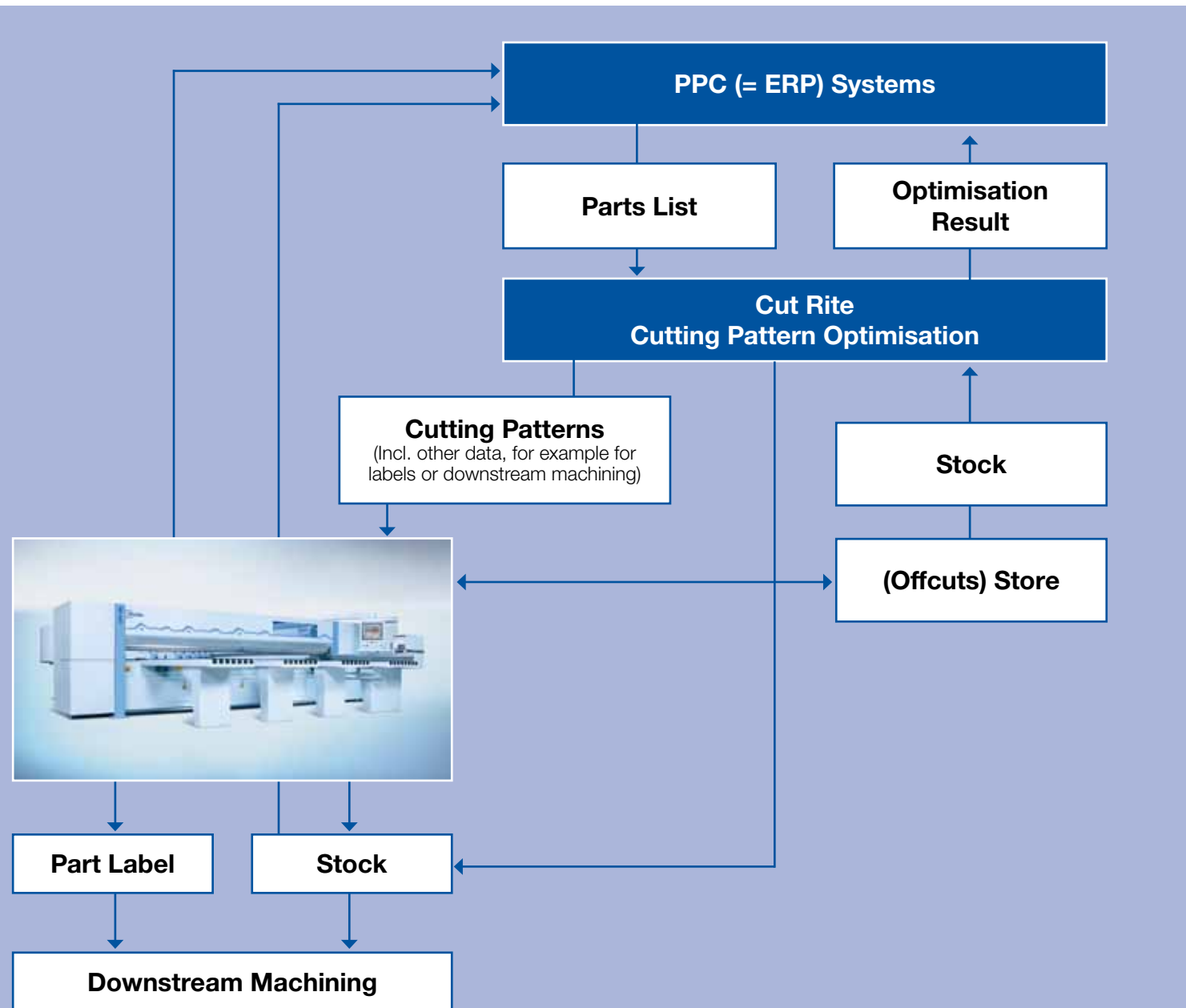
Cut Rite now also offers you spreadsheet functions. You can, for example, easily determine the number of rip and cross cuts in a cutting pattern, copy data and mathematical formulae as you like and have the results displayed automatically. XLS/XLSX format spreadsheets can be imported directly.

### Greater clarity due to vivid design

The new true-colour toolbars and buttons make optimising fun. You can store images in the parts or products libraries and then integrate them, for instance, in quotations.

# Which Cut Rite edition is right for you?

Whichever edition you choose, whether LITE, PRACTIVE or PROFESSIONAL, you can be sure that in Cut Rite HOLZMA is providing you with an optimisation software that matches your business needs. The basic software can be enhanced with up to six freely selectable add-on modules.



Cut Rite	LITE	PRACTIVE	PROFESSIONAL
<b>Part list</b>			
Metric or Imperial dimensions	✓	✓	✓
Grain/cross grain or no grain parts	✓	✓	✓
Exact quantity or over/under production	✓	✓	✓
Maximum number of part sizes per part list	10,000	20,000	20,000
Mixed material lists – unlimited materials per job	✓	✓	✓
User-defined part list information fields	99	99	99
Configurable part list editor	✓	✓	✓
<b>Import</b>			
Import part/cutting lists from user-defined CSV or Excel XLS(X) files	✓	✓	✓
Import board lists from user-defined CSV or Excel XLS(X) files	✓	✓	✓
<b>Cutting list</b>			
Cutting list rules – configurable		✓	✓
Multiple boards & offcut sizes per job	✓	✓	✓
<b>Optimising</b>			
Small/medium quantity sheet optimiser	✓	✓	✓
Timber/worktop cross cut optimiser	✓	✓	✓
Large quantity sheet optimiser			✓
Full sheet optimiser / automatic overproduction			✓
Free headcut optimiser			✓
Optimisation with priorities			✓
Pattern complexity controls	✓	✓	✓
Saw kerf & trim settings	✓	✓	✓
Recut settings for combiLine & HOMAG recut device			✓
Minimise material costs	✓	✓	✓
Minimise total production costs			✓
Extended optimiser time & advanced options			✓
Limit on open parts / stacks			✓
Mixed part stacks			✓
Maximum number of part sizes per optimisation	10,000	10,000	10,000
Maximum number of pieces per optimisation	10,000	10,000	beliebig
Batch optimisation – multiple lists – up to 250 jobs	✓	✓	✓
Material type & board specific parameters		✓	✓
Grain match optimisation		✓	✓
<b>Export</b>			
Export report data to Access database	✓	✓	✓
Export summaries to Excel XLS(X) files	✓	✓	✓
Export summaries to PDF	✓	✓	✓
Export patterns to DXF files	✓	✓	✓
<b>Reports, forms and labels</b>			
Batch and job summaries	✓	✓	✓
Part, board, material and pattern summaries	✓	✓	✓
Offcut summary	✓	✓	✓
Weight calculations	✓	✓	✓
Dashboard – graphs and bar charts	✓	✓	✓
Configurable reports & summaries	✓	✓	✓
Form design – part lists, patterns	✓	✓	✓
Label design – includes bar codes & pictures	✓	✓	✓
Labels for parts and offcuts	✓	✓	✓
<b>Stock</b>			
Material library with boards and offcuts	✓	✓	✓
Automatic stock issue from jobs	✓	✓	✓
Import stock adjustment from file	✓	✓	✓
<b>Patterns</b>			
Thumbnail preview of patterns	✓	✓	✓
Pattern display – colour coded or material texture	✓	✓	✓
Pattern editor – add, move, delete parts	✓	✓	✓
Pattern & template library		✓	✓
Cutting instructions for saw operator	✓	✓	✓
<b>General</b>			
File maintenance – copy /delete files	✓	✓	✓
Backup & restore data	✓	✓	✓
Integrated local help	✓	✓	✓
Link to website	✓	✓	✓
User profiles	✓	✓	✓
<b>Saw transfer</b>			
Cutting time parameters & calculation		✓	✓
Saw Interface – HOLZMA single saws with CADmatic 4 only	✓	✓	✓
Saw Interface – HOLZMA single saws		✓	✓
Saw Interface – HOLZMA angular saws			✓
Saw transfer parameters		✓	✓
Saw interface – PTX format		✓	✓
Tension trims		✓	✓



# Success needs a sound footing – the basic features

Easy handling through clear structures is Cut Rite's formula for success. The modular design of the software lets you choose exactly the functions you require. Furthermore, the software provides a high level of flexibility and configurability. Nearly all the modules can be combined with each of the editions – and can also be added on later if desired. This requires a strong base, linking all the editions. Cut Rite Version 9 has powerful basic features, making it the ideal choice for automated processes from data capture through optimisation to data output.

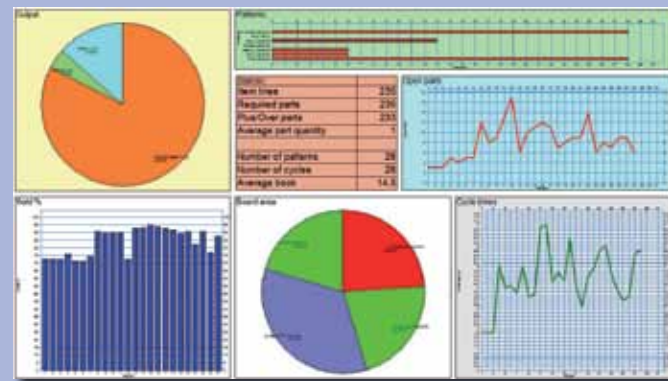
## Integrated board library

Fast, easy access to all of your board materials at your fingertips. Enter, change and delete information on the fly. The integrated board library can also be used for:

- synchronisation with storage systems
- stock control of edges and laminates
- stock control of standard parts

**Your benefits at a glance:**

- Full control of production costs
- Efficient cut-to-size operations
- Information instantly available on any project
- Fast, accurate calculations
- ERP/PPC compatible
- Three editions and six supplementary modules for tailor-made solutions



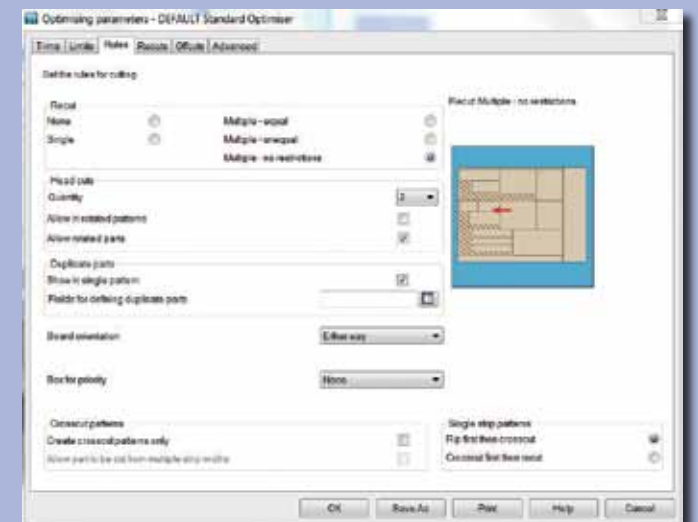
## Dashboard

V9 offers a dashboard and charting feature to accompany the comprehensive reporting features. The dashboard offers key statistics of the job, backed up by pie charts, graphs and bar charts to highlight important results. The charts are configurable and each summary, e.g. pattern summary, board summary, can have up to three charts attached.

## Parts list

Enter part details manually or simply import them directly from other software packages, for example from Excel spreadsheets.

- All information available at a glance
- Edit and process data as required
- Save and re-use data as required

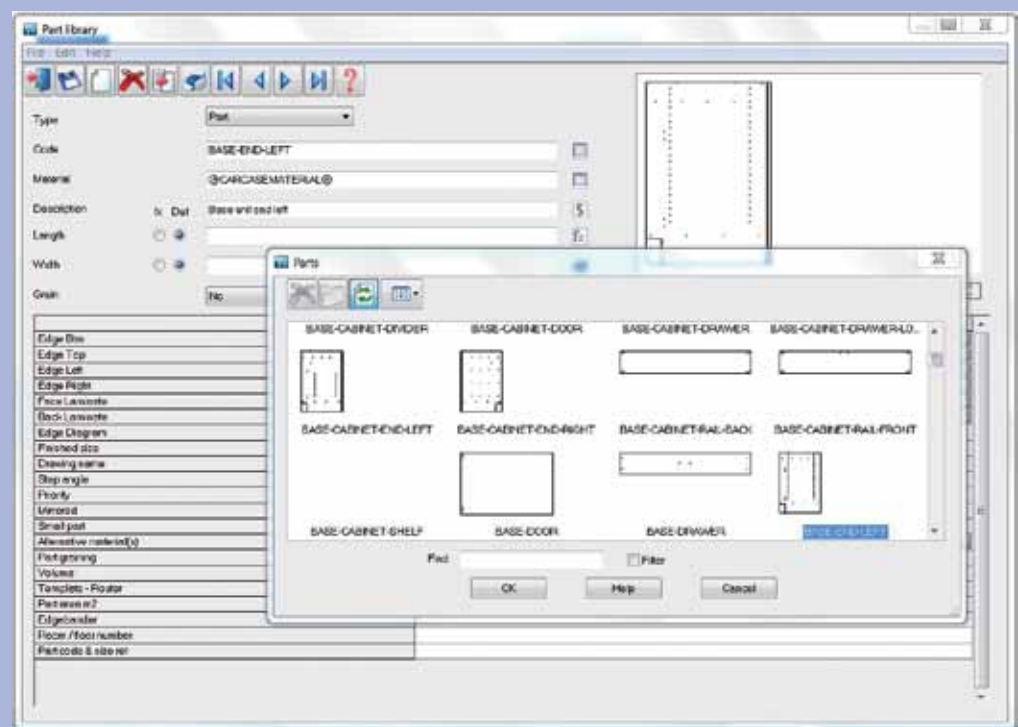


## Optimising parameters

All necessary settings are presented in a comprehensive way with guides and graphics to support you. It will be you who sets the standards for the cutting process, not the software!

## For better management and tracking of parts

This module helps you gear up for production faster by instantly generating data for all your most frequently used parts. Simply by using just the part codes to pull items into a parts list, you can enter cutting lists quickly and accurately, and create factory route cards and labels at the press of a button – speeding up despatch as well as production.

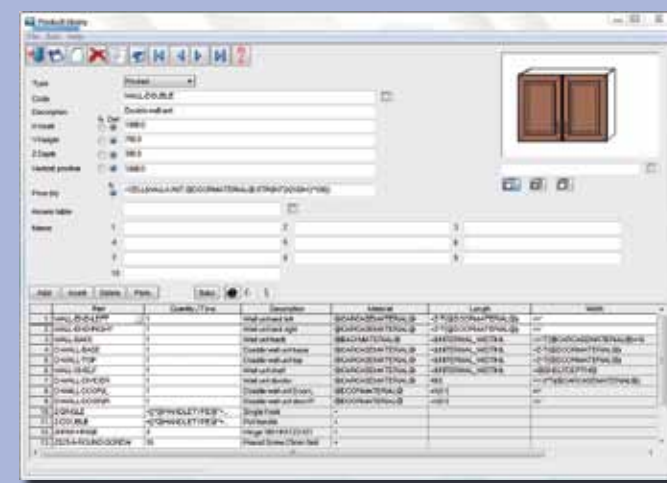
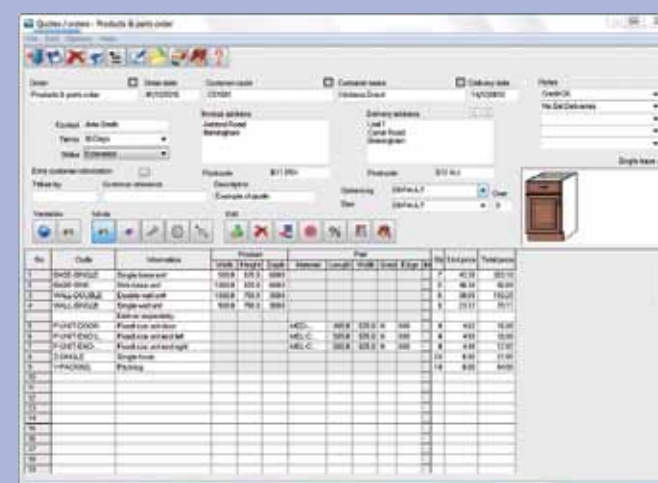


### Features and benefits

- The part library can hold details of size, material, grain, edging – and plenty of user-defined information for each part.
- You can generate detailed labels with multiple bar codes and pictures, for fast setup of CNC machines equipped with bar code scanners.
- The library can also hold a list of regularly used hardware components such as hinges, screws and drawer slides with their costs.
- The part dimensions and other fields may be parametric and specified at order entry if required.
- Labels may be printed in the office in the sequence of cutting, or at the saw (with additional equipment).
- A list of operation times can be held for each part and be used to build up a full part cost.

## For fast response to enquiries and orders

This module helps you create accurate quotations and process orders quickly and easily. The parametric product library enables Cut Rite to detail any job, including standard or custom products, parts, hardware and operations. You will only need to enter your data once to produce order acknowledgements, despatch notes, invoices and a complete calculation of all costs.

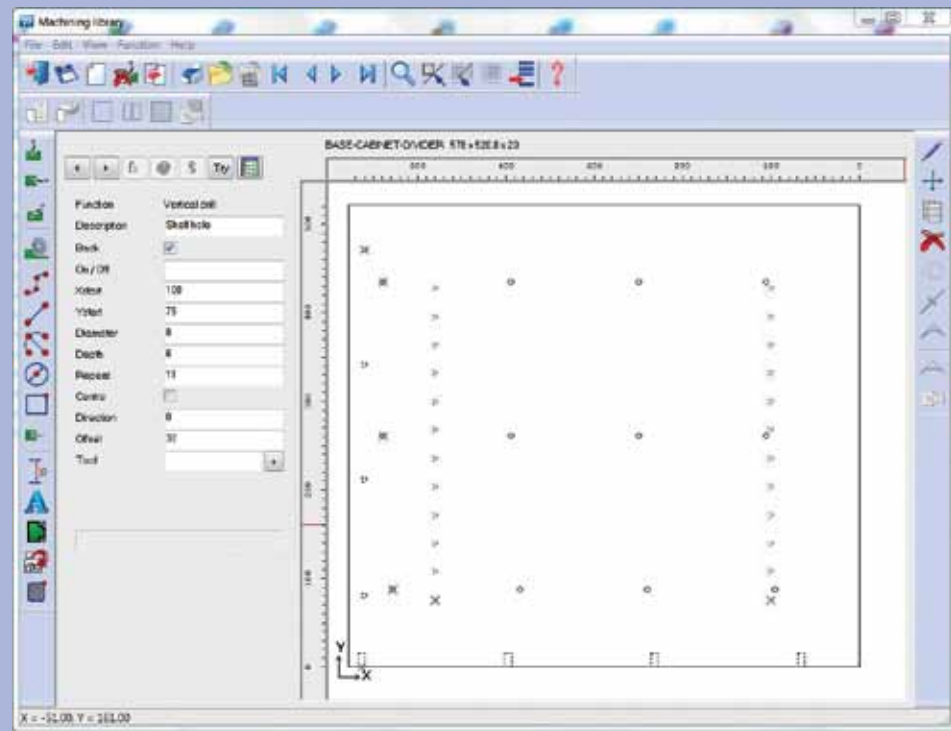


### Features and benefits

- Customer database with full contact details, invoicing address, multiple delivery addresses, discounts and free-format notes fields.
- User-defined product “variables” take account of order-based requirements such as material colour and thickness, and hardware options.
- Flexible form-designer allows tailor-made documents to include your company logo, pictures, bar codes with full control of font and positioning.
- Use of formulae and user-defined tables enables automatic calculation of component sizes for special cabinets, and allows parametric pricing.
- You can use the integrated drawing library to add drawings to your product catalogue.
- You can obtain a picking list with the calculation of sundry part sizes such as solid lipping or bought-out items.

## For fast setup of your CNC machinery

To streamline production into a seamless, highly efficient and accurate process, simply choose this module. It creates a fully integrated manufacturing cell, by downloading part drawings directly to your point-to-point machining centre. Parts are labelled at the saw with a bar code for the drawing reference; scanning at the machining centre provides a foolproof and fast process that guarantees each part is machined correctly.

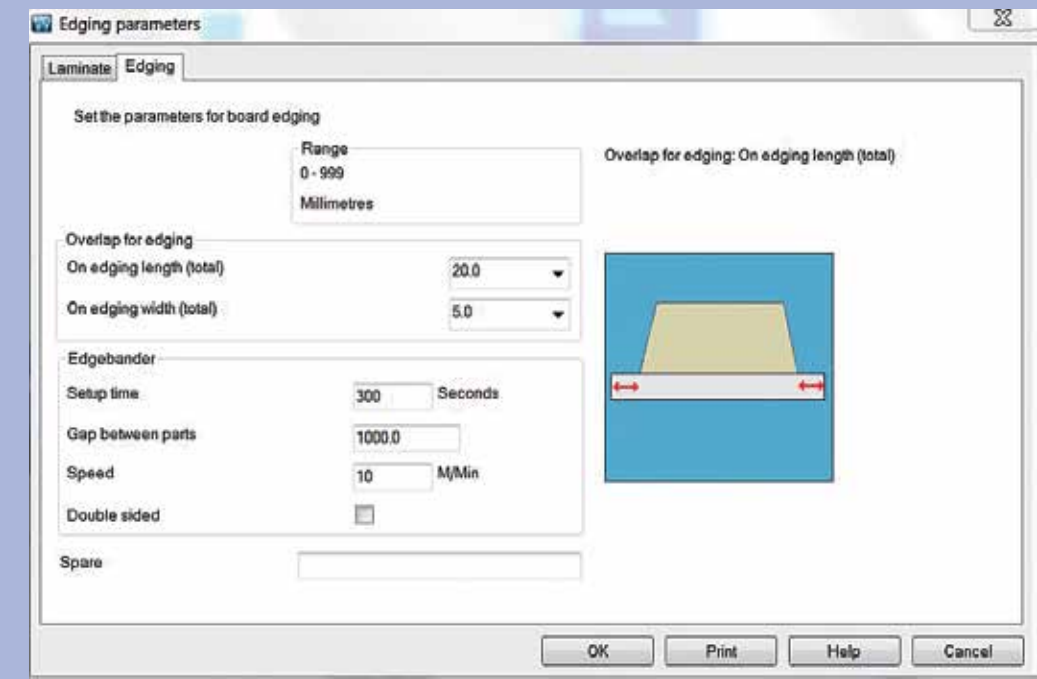


### Features and benefits

- The geometry for rectangular or shaped parts can be drawn quickly using the editor, or can be imported from DXF files.
- The machining library holds parametric drawings so that, as the part size changes, the machining instructions are recalculated instantly.
- Offers support for drilling, grooving, contour routing, operations on both sides of part, vacuum pod positions, dimension lines and pockets.
- Details of depths and tooling information can be added for each operation, including speeds and other tool specific data.
- The machining interface allows direct transfer of data to most CNC-controlled machining centres via DXF and proprietary formats.
- Labels or route sheets can include the part drawing.
- Machining times can be estimated for each part.

## Accurate costing of edging and laminating materials

This module simplifies planning by calculating your cut sizes in one straightforward step. It adjusts cutting sizes by edge thickness and core trim, and gives you the size of each laminate piece and edging strip. The edging layout can be shown on the part label to ensure the correct application of the edge banding.



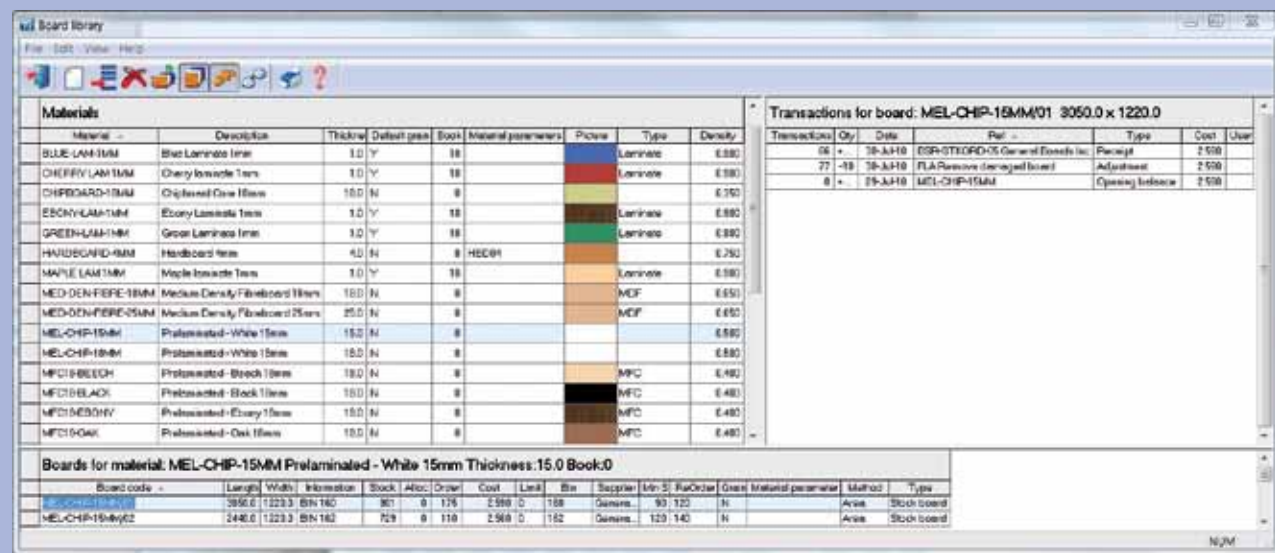
### Features and benefits

- The edging library holds description, thickness and cost of all of your edging and laminating materials.
- The edging summary lists total linear measure and cost of each edge material required for each job.
- The calculation of laminate sizes can include trim allowance and special calculations for post-formed and bull-nosed edges.
- If you're using a work-cell method then program details for each part can be passed to your edge-bander using bar codes.
- The module provides detailed estimates of edge-banding times and costs for single or double sided edge-banders.
- Edging layout graphic shows detail of corner treatment including whether adjacent edges butt together or are mitred, and if corner is rounded.



# For accurate and efficient inventory management

This invaluable module protects your profit margin by minimising downtime due to lack of stock. It helps you accurately track your raw materials, adding offcuts back to stock so that no reusable material is wasted – and you can allocate sheets to jobs in advance so that you don't optimise the same offcut on different jobs.

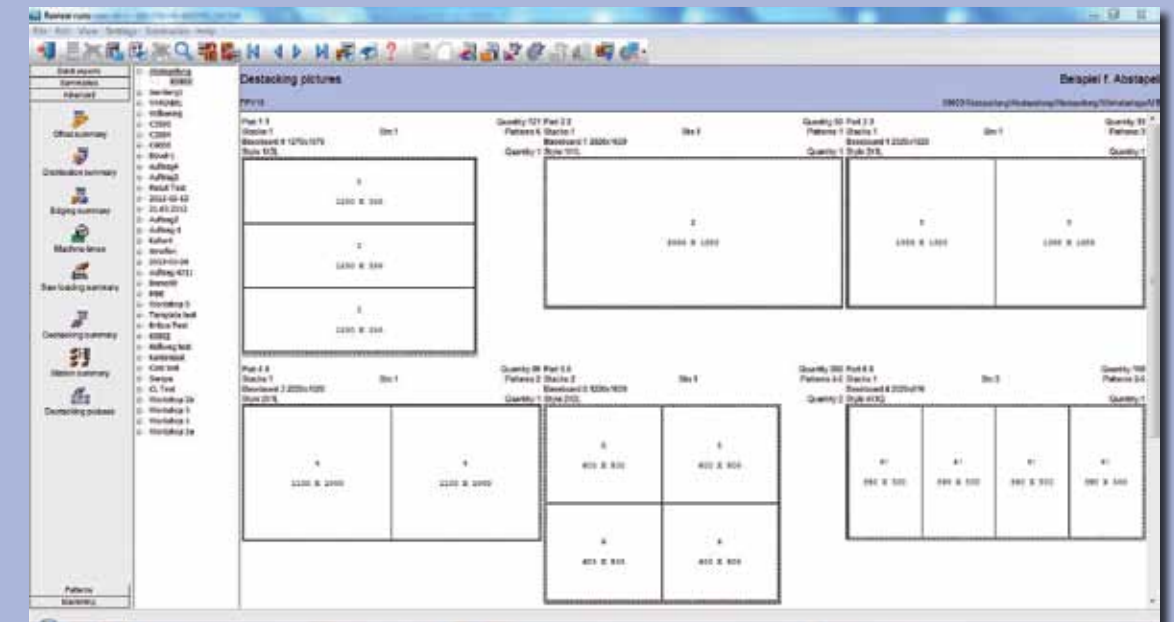


### Features and benefits

- The program helps you check stock levels, record raw material orders and book in receipts from your supplier.
- It considers available free stock and automatically adjusts stock after cutting.
- Configurable reports include stock valuation, minimum stock levels, monthly summary of stock usage and an audit trail of all stock movements.
- The program automatically updates both core material and laminate stock, when you laminate full sheets prior to cutting.
- Physical stock control of hardware and edge-banding material when used with the modules "Order processing and variable parts lists" and "Edging and laminating".
- Interface to automatic handling systems for synchronisation of board and offcut stock via SQL Server database table.

# Efficient destacking and fast material flow

You can keep production running smoothly by using the destacking module, which streamlines throughput at the saw by planning the destacking process. It gives you a list of pallet requirements or a base-board cutting list and, based on the size of your mechanised destacking stations, will limit the number of open parts, ensuring finished items go to assembly as quickly as possible.

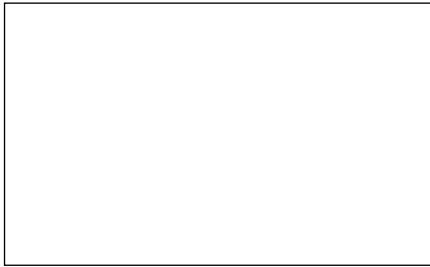


### Features and benefits

- A cutting list for baseboards is calculated from the part sizes allowing for oversize allowance, layout constraints and maximum stacking height.
- A destacking summary for the operator shows pattern by pattern on which pallet each part must be placed.
- The layout of parts on each pallet or baseboard can be downloaded to destacking equipment or robots.
- You can print labels for pallets or stacks when used with the "Part library" module.
- The "Destacking" module includes an advanced optimising algorithm which obeys maximum station sizes when allocating parts to stations.



This brochure was given to you by:



**Choose the Original  
Choose Success!**

For the Success of Original Technology  
A VDMA Campaign

Printed 03/14. Subject to technical change without notice. Misprints and errors excepted.  
Illustrations may show optional equipment not included in the basic price.

A company of the HOMAG Group



**HOLZMA Plattenaufteiltechnik GmbH**

Holzmastrasse 3  
75365 CALW-HOLZBRONN  
GERMANY

Tel. +49 7053 69-0  
Fax +49 7053 6174  
info@holzma.com  
www.holzma.com

[www.youtube.com/holzma](http://www.youtube.com/holzma)  
[www.twitter.com/holzma](http://www.twitter.com/holzma)  
[www.facebook.com/holzma](http://www.facebook.com/holzma)