

Simply better, right from the start.

HOMAG

Our panel dividing saws
SAWTEQ B-130

YOUR SOLUTION





The SAWTEQ B-130 panel dividing saw — precision at an unrivaled price

The smallest HOMAG panel dividing saw, the SAWTEQ B-130, costs little more than a well-equipped circular saw while providing a much more precise and efficient cutting process. This is ensured by proven technologies as well as a saw concept that is consistently aligned with trade practice. In short: the SAWTEQ B-130 makes moving up into the world of precision production easy by giving you exactly the right saw.

YOUR SOLUTION

MORE AT HOMAG.COM



SAWTEQ B-130

CONTENTS

- 04 Software
- 10 SAWTEQ B-130
- 12 Standard features
- 18 Optional features
- 25 Technical data
- 26 Service

What's different? The software!

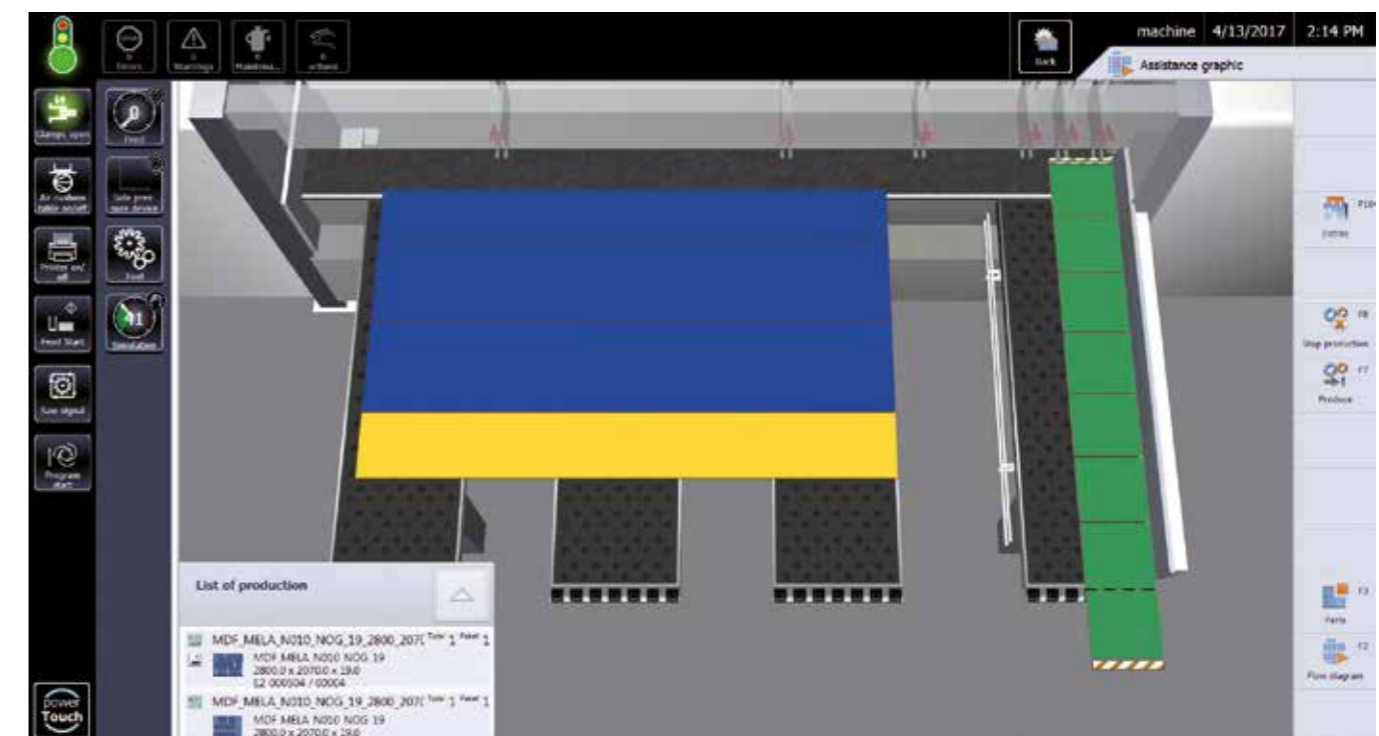
It efficiently integrates the machine into the production process. This results in seamless, intelligently networked processes from start to finish. In short: the right software unlocks new value-added potential. That is what makes it so important.





CADmatic 5 – intuitive to operate and open for digital networking

CADmatic 5 is the state-of-the-art, high-performance saw control system from HOMAG. It provides a vast range of functions and great ease of use thanks to its intuitive operating concept and clear administrative functions. What's more, CADmatic 5 is open for communication with other machines and software solutions.



CADmatic 5 – the change in perspective

The latest generation of the HOMAG saw controller features a new assistance graphic that clearly shows the machine operator what he has to do next. Compared to the previous process graphic that showed all the work steps of the saw (and can still be called up if required), this new graphic represents a 180-degree change in perspective!

Highlights:

- The new 3D assistance graphic supports the operator and is intuitive to operate, which shortens the training period and reduces errors to a minimum
- This results in efficient processes and a steady output
- Simple handling via tapping and swiping (touch functions)
- Quick change between the individual sections

- Graphically supported diagnostics
- powerTouch user interface
- Ready for connection to tapio
- 21" full-HD widescreen monitor with multi-touch display

Find out more in the "CADmatic" brochure.

Optional features: increasing productivity with the appropriate cutting optimization software

Production time, material yield, parts handling and logistical process: efficient panel cutting with seamless processes requires intelligently optimized cutting patterns. For HOMAG saws, you can get the appropriate optimization solution on demand – from large to small, as permanently installed software or directly from the tapio cloud. You have the choice because the SAWTEQ B-130 is now tapio-ready.



intelliDivide – the easy way to first-class optimization results

Simply upload the parts list. Done! The result? A choice of several alternatives for cutting patterns and entire runs. That's how easy intelliDivide makes it.

In detail: the cloud-based optimization software intelliDivide features significantly higher computing capacities than does locally installed optimization software and can therefore swiftly provide the user with multiple variants of an optimization result.

This means the operator can choose from a variety of options, including a result based purely on reducing waste, a result based on the shortest machine time or on the simplest handling, perfectly adapted to the relevant requirements.

Applications are varied and are geared towards both the trade and industry. Would you, for example, occasionally like to optimize cutting patterns without having to buy, install and maintain a software solution? Then intelliDivide is just what you need. This is because you can use intelliDivide quite simply on an on-demand basis, as software as a service.

However, intelliDivide is also very interesting for large companies. Why so? Via the cloud, you can optimize your cutting patterns extremely quickly, intelligently and accurately with the help of a powerful calculation engine.

The SAWTEQ B-130 is tapio-ready, allowing intelliDivide to recognize the machine configuration of your saw and take it into consideration for every optimization run in the cloud, completely automatically. This pays off every time in the case of high material throughput.



Cut Rite cutting optimization software

Efficiency through planning: this short phrase sums up the key benefits of the Cut Rite software. With this world-leading software solution, you can optimize waste and systematically lower the overall costs for cutting.

- Optimized project control
- Efficient cutting processes
- Full control of costs
- Faster calculations

Find out more in the "Cut Rite" brochure.

CADplan

As an alternative to the comprehensive Cut Rite optimization software, CADplan, an add-on module for CADmatic, can also be used to perform small optimization jobs directly at the saw.

Small but powerful — the SAWTEQ B-130

Compact size, sturdy design and equipped with proven HOMAG technologies. In short: the SAWTEQ B-130 is a panel dividing saw that ideally meets the requirements of ambitious craft businesses.



The highlights

- 60 mm saw blade projection
- 3 air cushion tables, each with a width of 500 mm for easy and gentle panel handling
- HOMAG CADmatic 5 control software
- Including protective guard





Standard features

The motto of the SAWTEQ B-130 is "buy, connect, and experience precision". As standard, HOMAG equips the panel dividing saw with everything you need for high-precision cutting of single panels and small series. This saves you having to evaluate various technical solutions and you can start using your new HOMAG machine straight away. It doesn't get easier than this.

High performance is the result of numerous high-tech solutions

Speed, quality and precision during the cutting process can only be achieved if panel materials are moved quickly, gently and with a high level of accuracy. On the SAWTEQ B-130, this is ensured by numerous technologies in the standard features that smoothly interact with one another — from the program fence and pressure beam to the clamps and patented side pressure device.



HOMAG patent: central side pressure device

- Integrated directly in the saw carriage. This reduces cycle times by up to 25% in comparison with conventional systems
- The contact pressure is infinitely variable – ideal for thin panels, laminates or sensitive materials



Saw carriage

The saw carriage is a robust steel construction with a main and a scoring saw as well as a central side pressure device.

- Maintenance-friendly: one motor for the main and scoring saw
- Innovative system for raising and lowering the main and scoring saw blades
- Excellent work results, accurate and precise

Further strengths:

- Infinitely variable saw carriage speed
- Highly precise and quiet
- Fast saw blade change thanks to Power-Loc
- Saw carriage speed up to 60 m/min
- Manual scoring saw blade adjustment

Power-Loc

This easy-to-use, fast clamping system speeds up blade changes on both main and scoring saw.



Program fence for precision and dimensional accuracy

The sturdy electronically controlled program fence with clamps and accurate guiding system has an electromagnetic measuring system that guarantees positioning accuracy of +/- 0.2 mm per meter. Even minimal trims and dust cuts are possible. The measuring system is entirely wear and maintenance-free.

Rugged pressure beam for first-class cut quality

The large-area pressure zone directly at the cutting line reduces vibrations to a minimum. The result is precise cuts, for books too.



Clamps: perfection down to the last detail

The robust clamps position the material gently and precisely at the cutting line.



Additional start / stop button

A very practical and ergonomic solution – in particular when cutting long strips or large panels that make access to the control panel difficult.

Optional features

Businesses aiming at growth and dynamic development are optimally equipped with the SAWTEQ B-130 because even the smallest of the HOMAG saws can be extended easily and flexibly.



Plenty of useful options

Regardless of whether you're looking for hardware or software, you can always get more because at HOMAG you have access to practical, needs-based add-on technologies.



Gentle material handling

Additional rollers on the edge of the air cushion table ensure particularly gentle handling of material and lessen the effort required.

Air cushion tables

Instead of the standard 500 mm air cushion table width, a width of 650 mm is also available.

Additional clamps

An extra that gives you a real grip so that your saw always has a firm hold even on particularly large, thin or smooth materials.

More power for the main saw

The SAWTEQ B-130 can optionally be fitted with a more powerful main saw motor – 7.5 kW power instead of 5.5 kW.



Manual trim stops

With these, your saw can also master material with overhanging laminates or veneers. The trim stops are integrated in the clamps and are simply flipped forward when required.

- Rugged
- Gentle handling of sensitive materials with overhanging laminates or veneers
- Precise positioning

MORE AT HOMAG.COM

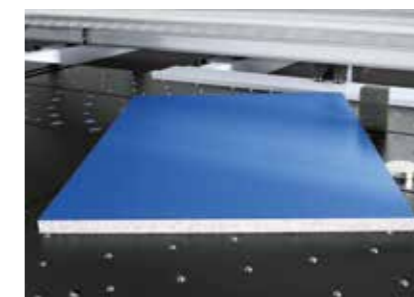


Trim stops



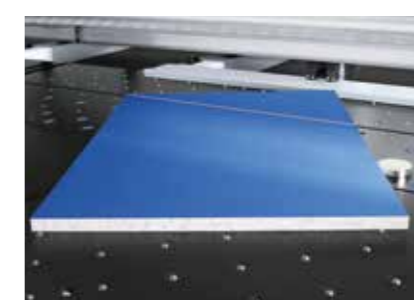
Stress elimination cut

Stresses in the material are released when the material is cut and can influence the quality of dimensions and cuts. The HOMAG stress elimination cut option can solve this problem. Systematic preliminary cuts can be defined during optimization and release the tension in the material.



Cutting and kerfing

Kerfing on the panel dividing saw saves time.

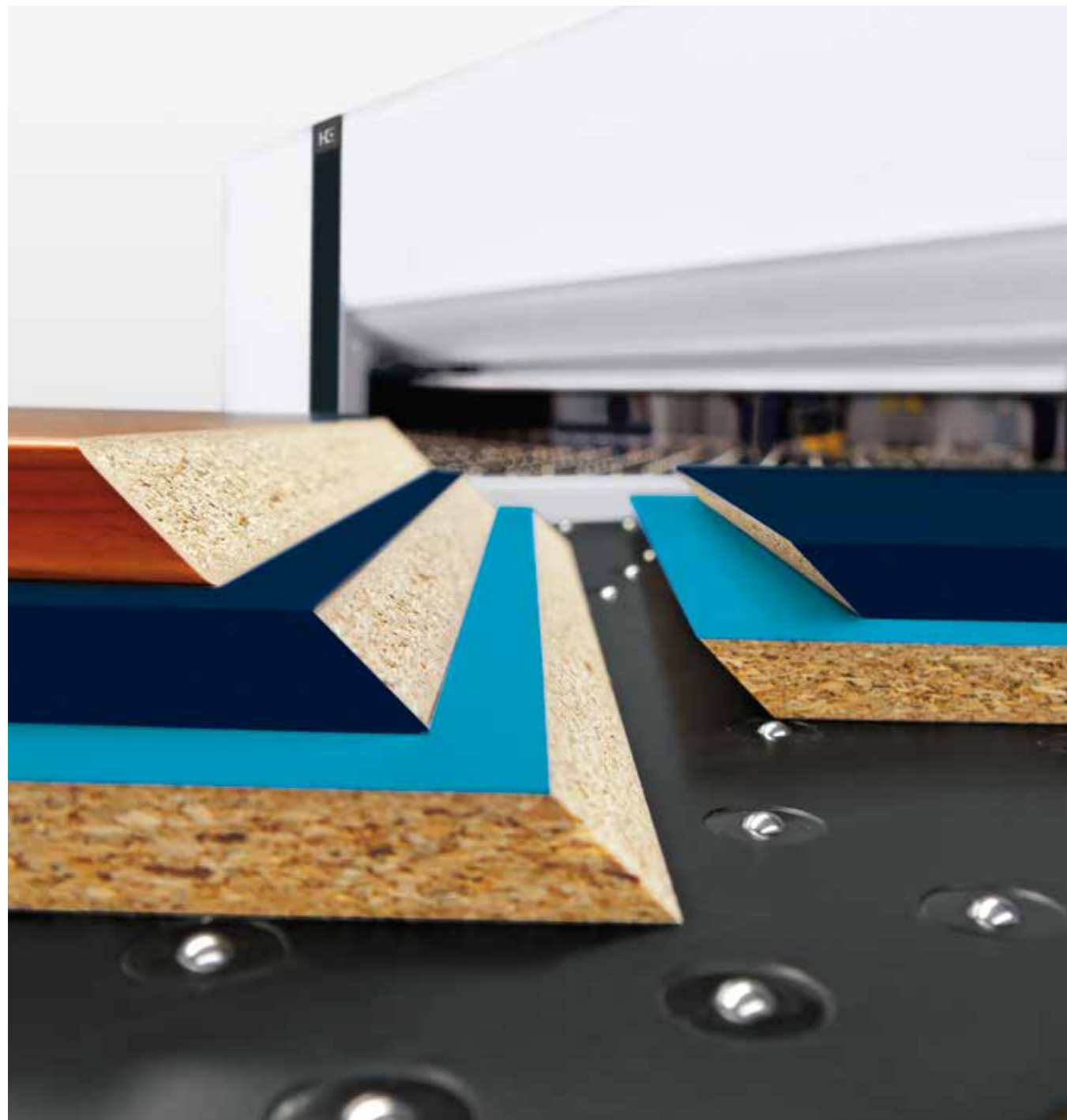


Manual angle cut

The angle cut device allows you to control angle cuts using the CADmatic control software.

module45 – giving your saw the scope to produce bevel cuts

With this innovation from HOMAG, you can produce all cuts, including bevel cuts, on one and the same saw. Work efficiently and flexibly without changing station, at seamlessly adjustable angles ranging from 0 to 46 degrees.



Illustrations may show the technical principle but not the precise machine variant described. Optional features, for example, may be shown.



The technology

- module45 consists of a stationary saw carriage with a tilting saw blade that can be seamlessly adjusted to angles of 0 to 46 degrees
- When viewed from the front, the unit is integrated in the air cushion table on the far left
- The table plate can be opened, allowing easy access to the saw carriage for changing saw blades
- Other features include dedicated systems for contact pressure and dust extraction, plus a fold-down right-angled fence for maximum handling flexibility at the front of the saw

Incorporate bevels into cutting patterns

Now you can also incorporate bevel cuts into your cutting patterns: either using the Cut Rite optimization software when preparing work in the office, or when inputting the patterns directly in CADmatic. Parts to be processed with module45 are then cut (oversize) and the operator only needs to set the angle of the bevel on module45 and start the cut.



The benefits of module45

- Low investment costs, great benefits
- You no longer need a sliding table saw for bevel cuts
- Higher energy efficiency with two machines in one
- Easy one-man operation
- Less waste and higher quality thanks to less transport damage as the material remains on the one machine
- Greater ergonomic benefits and higher reliability than a circular saw
- Unbeatable cost/benefit ratio
- Available as retrofit on request

[MORE AT HOMAG.COM](https://www.homag.com)



module45

Reliable labeling and identification

To ensure that your processes also continue smoothly after the saw, HOMAG offers you needs-based labeling solutions. For fast labeling and reliable identification at all downstream stations.



Greater efficiency, fewer errors: label printer

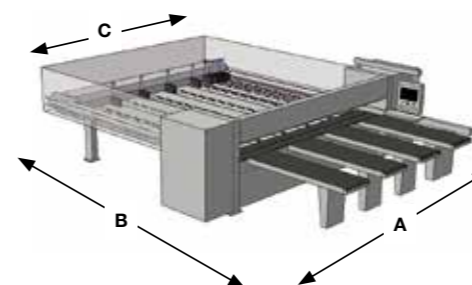
To create custom labels directly at the saw and design them as required with a barcode, text or even graphics. If you also use our Cut Rite optimization software, the material goes directly to the next process step with printed instructions.

TECHNICAL DATA*	
Model	SAWTEQ B-130
Saw blade projection (mm)	60
Cutting length (mm)	3,200
Program fence speed (m/min)	up to 60 **
Saw carriage speed (m/min)	up to 60
Main saw motor (kW)	5.5 (7.5 as an option)
Main saw blade (mm)	300 x 4.4 x 60
Scoring saw blade (mm)	150 x 4.5-5.5 x 45
Operating software	CADmatic 5
Monitor	21" TFT flat screen monitor
Total air requirement (NI/min)	150
Required compressed air supply (bar)	6
Extraction system (m ³ /h)	2,600 (approx. 26 m/sec.)

* Values relate to the standard version

** Forwards 25 m/min

*** Dim. A: incl. 64 mm for extraction connection, dim. C: standard program fence width



MACHINE DIMENSIONS***			
	A (mm)	B (mm)	C (mm)
SAWTEQ B-130	5,307	6,037	3,587



HOMAG LifeCycleService

Optimal service and individual consultations are included in the purchase of our machines. We provide support through service innovations and products that are tailored exactly to your company's requirements. With short response times and

fast customer solutions, we can guarantee excellent availability and cost-effective production for the entire life cycle of your machine.



Remote service

- Hotline support for the control system, mechanics, and process technology from our remote service specialists. This results in 90% fewer on-site service visits!
- Mobile applications such as ServiceBoard reduce costs by providing fast assistance in the event of malfunctions via mobile live video diagnostics, online service messages and eParts, the online spare parts shop



Spare part service

- Identify, request and order spare parts 24/7 via www.eParts.de
- Parts available locally worldwide through sales and service companies, as well as sales and service partners
- Reduction in downtimes due to specific replacement part and wear part kits



Modernization

- Keep your machine pool up-to-date and increase both the productivity and product quality. Meet future product requirements today!
- We provide support through upgrades, modernizations, and individual consultations and development



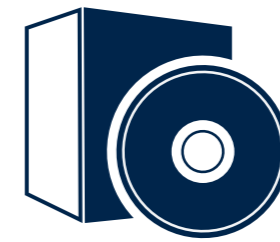
HOMAG Finance – tailor-made financial solutions

- We offer you tailored financing proposals for your machinery or plants. Our financial advice goes hand in hand with our expertise relating to technical questions. Your personal contact person will take care of the whole process
- The benefits for you: you can invest in new technologies without delay, while remaining financially flexible



Training

- Thanks to training that is precisely tailored to your needs, your machine operators can operate and maintain HOMAG machines as efficiently as possible
- You will also receive customer-specific training material with tried-and-tested exercises



Software

- Telephone support and advice from Software Support
- Digitization of your sample parts using 3D scanning saves time and money in comparison with reprogramming
- Retrospective networking of your machine fleet with intelligent software solutions from design through to production



Field service

- Increased machine availability and product quality thanks to certified service personnel
- Regular checks through maintenance / inspection ensure that your products are of the highest quality
- Minimized downtimes in the event of unforeseeable malfunctions due to the high availability of our technicians

1,200

service employees worldwide

> 90%

fewer on-site visits due to successful remote diagnostics

5,000

customer training sessions per year

> 150,000

machines electronically documented in 28 languages in eParts

HOMAG Group AG

info@homag.com
www.homag.com



YOUR SOLUTION