

woodDesign

The whole new experience in furniture design and visualization

woodDesign is a modern 3D design tool for interactive cabinet furniture design.

woodDesign is used to program complete items of carcass furniture instead of individual components.

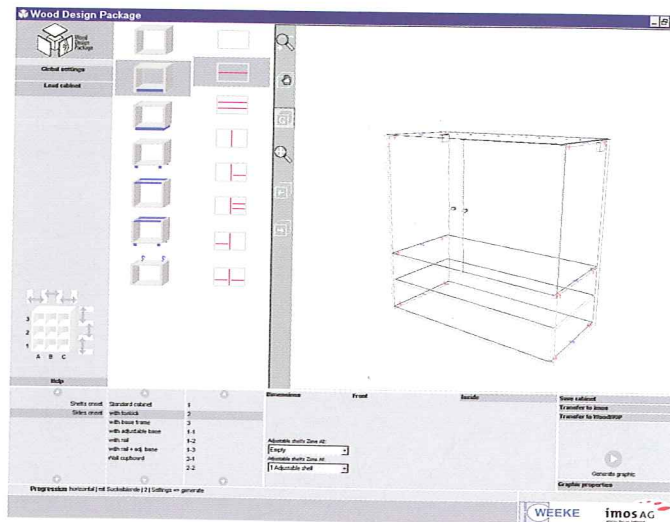
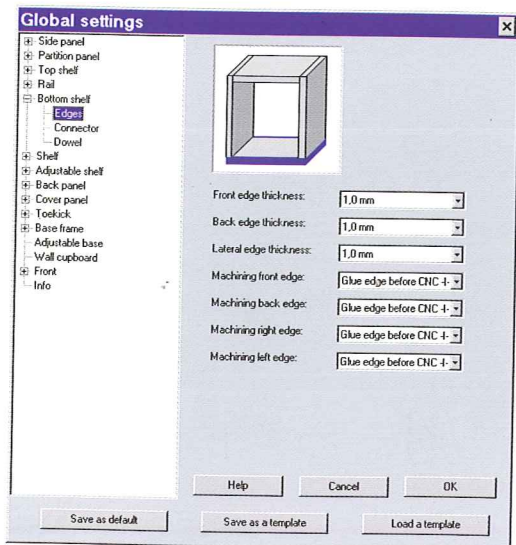
Frequently used objects are configured in a 3-D view. The 3D visualization function guarantees optimum user convenience.

For all components to be produced, a production list is automatically generated including the relevant woodWOP programs.

woodDesign permits individual definition of used materials, fittings, connectors and basic design parameters.



woodDesign



3D visualization

This function visualizes the object with the previously set data, with close-to-nature views possible of all sides. By using the alternative grid model view, the design can be quickly visually checked for technical faults.

Simple handling

By working with stored settings and selecting technical design details from a clearly manageable menu, furniture can be designed quickly and reliably free of errors. Comprehensive help functions are available for user support.

Menu-prompted inputs

Using a simple "one-click" menu control concept, a comprehensive article library can be accessed with the utmost simplicity.

User-friendly input

Clearly manageable input of combinations and materials with repeated use of pre-set and stored values. Subsequent transfer of data to woodWOP and generation of a production list.

System requirements

- Office PC
- WIN98, ME, NT4, 2000 or XP
- Screen resolution min. 800 x 600 pixel
- 50 MB free hard disk space
- At least 128 MB RAM

Machine control system requirements

- woodWOP version 4.5.630 or higher
- Microsoft Internet Explorer version 5.0 or higher



Weeke Bohrsysteme GmbH
Benzstr. 10 - 16
33442 HERZEBROCK-CLARHOLZ
GERMANY
Phone +49 5245 445-0
Fax +49 5245 445-139
E-Mail info@weeke.de
Internet www.weeke.com