

Hundegger

K2

The machine for every type of wood construction!

Fully Automated Joinery Machine

with automatic planer and chamferer for multiple or single piece production.

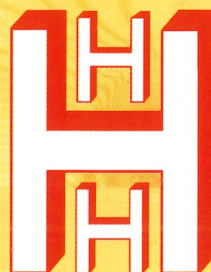


Produce components without measurement, layout, or setup time.
Cross Sections from 20 x 50 mm to 300 x 450 mm (13/16" x 1-15/16" to 11-13/16" x 17-11/16")
an option to 625 mm (24-5/8") is also available.



From Rafters to Stairs!

Hundegger USA, L.C.
Box 969, 3093 West So. Hwy 189
Charleston, Utah 84032
Tel. (435) 654-3028
Fax (435) 654-3047
E-mail: info@hundeggerusa.com
<http://www.hundeggerusa.com>



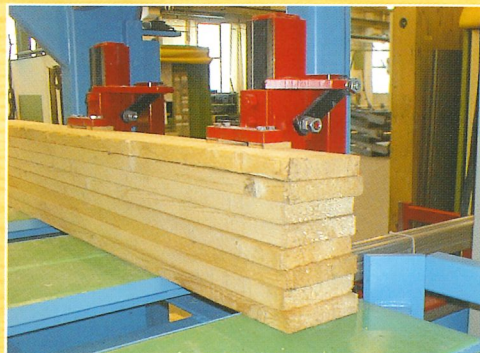
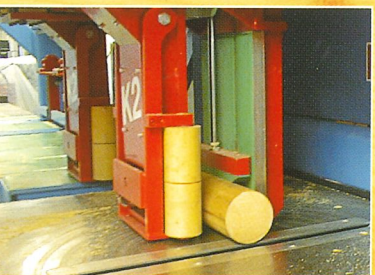
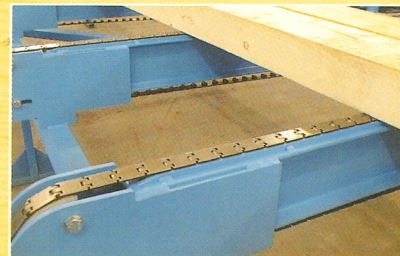
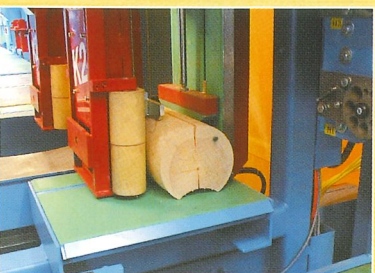
Hans Hundegger
Maschinenbau GmbH
Kemptener Straße 1
D-87749 Hawangen
Tel. 08332 / 923310
Fax 08332 / 923311
E-mail: info@hundegger.de
<http://www.hundegger.de>

- incomparable - flexible - economical -



Worry free wood handling!

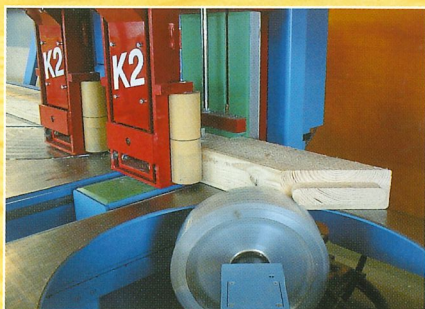
- loading with a flat chain
- rubber in-feed clamps
- highly accurate flat non-marring table
- 2 guide and positioning wagons with non-marring surfaces
- non-marring out-feed table



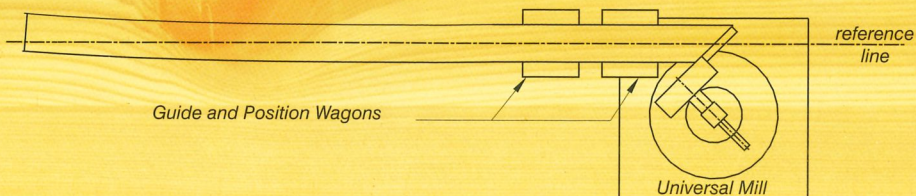
Working with rounds, profiled logs, TJI's and stacked dimensional lumber requires no special set-up. They can be easily loaded, securely positioned, and accurately cut.



Revolutionary Handling System!

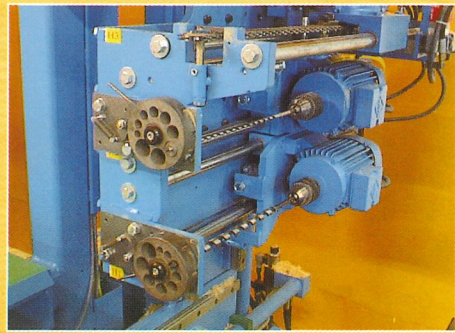


The new revolutionary transport and positioning system with two guide and positioning wagons guarantees accurate cuts even with bowed or twisted lumber. The wood is held in position directly at the point of operation, so that a bow or twist does not affect the accuracy of the joinery. (see illustration)

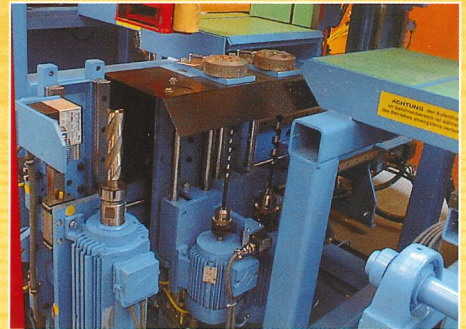


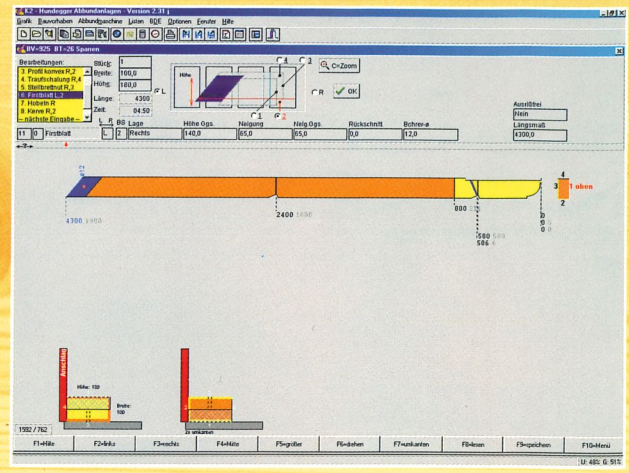
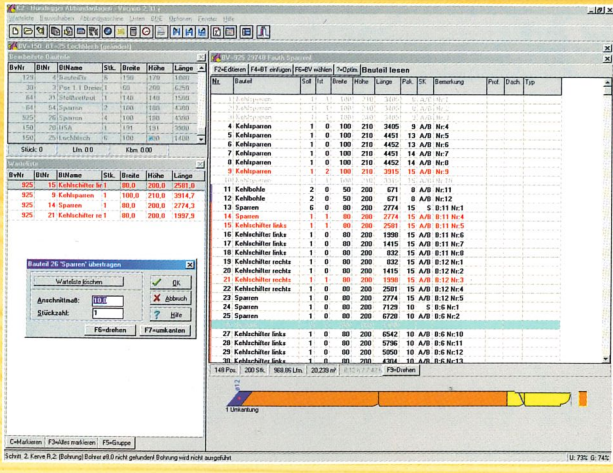


Customized to fit your needs!



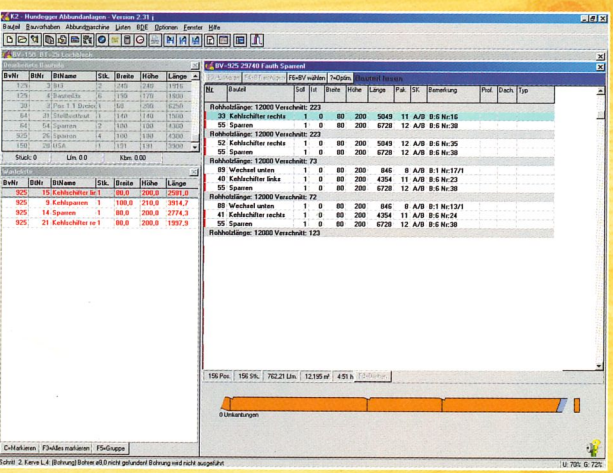
The versatile K2 is manufactured to meet the requirements of the diversified wood construction industry. It can be ordered as an automated component saw or as a fully automated joinery machine. Workstations or tooling can be added as needed.



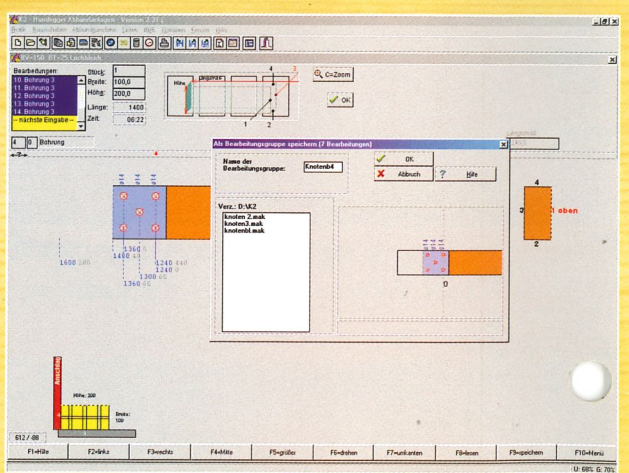


The K2 is programmed in terms and with dimensioning that is used in carpentry. Data from other CAD programs can also be easily imported.

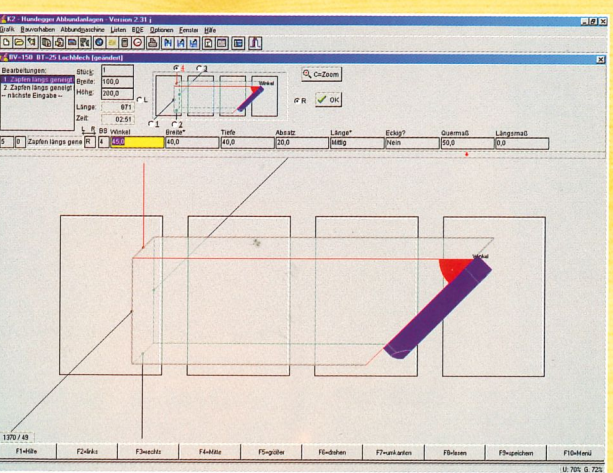
The sophisticated process control system creates an efficient work sequence without sorting lumber. The cut list can be adjusted to match the order of material on the loading conveyor. Each piece is then loaded and cut automatically. After processing, the part is recorded on the computer as completed.



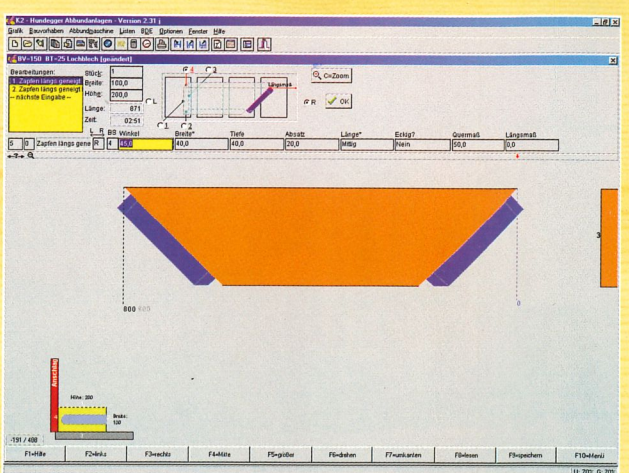
Material Optimization



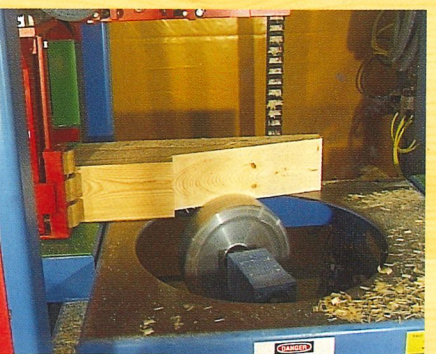
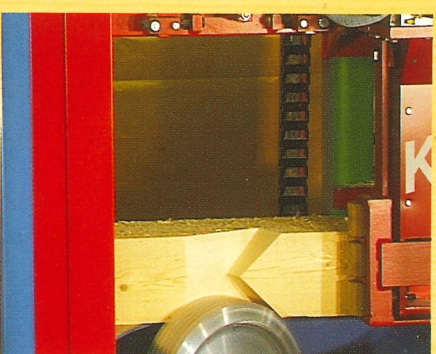
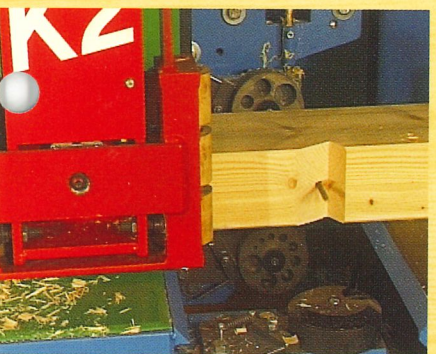
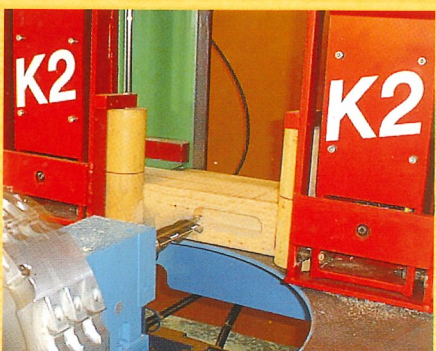
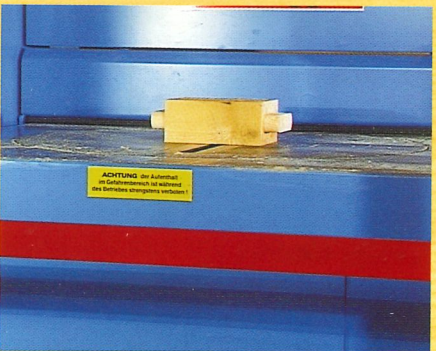
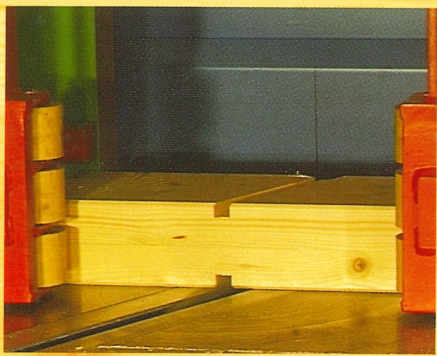
Save Process Groups



Input Prompts

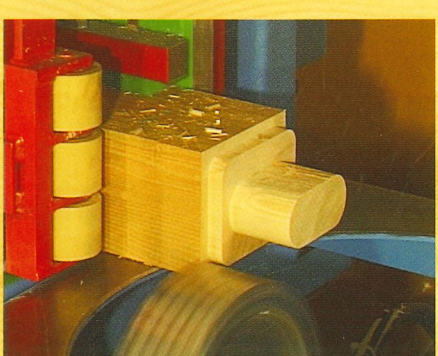
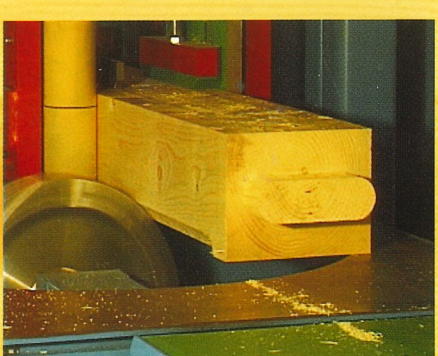
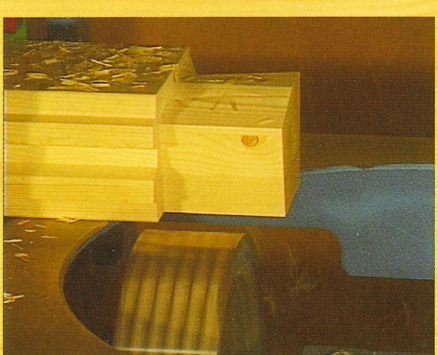
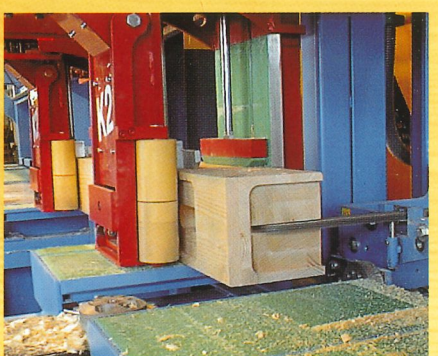
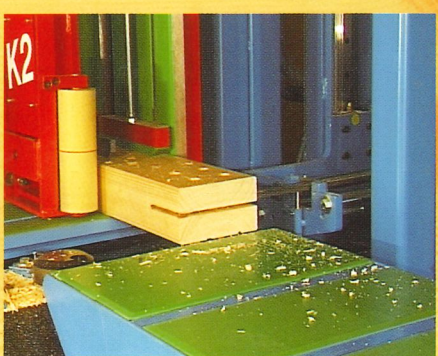
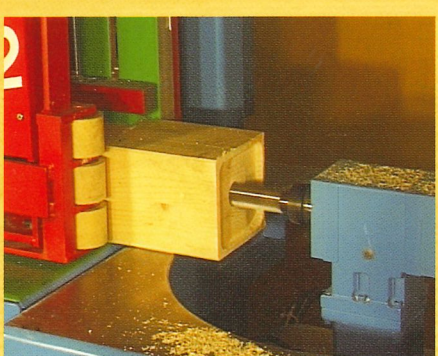
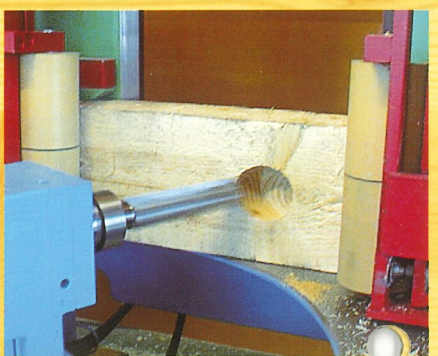
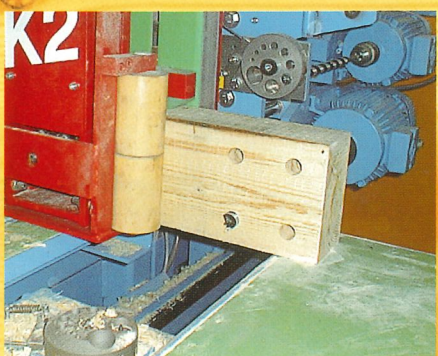
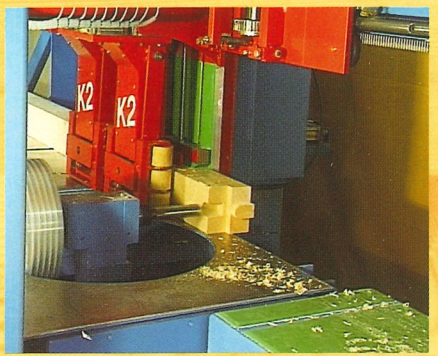
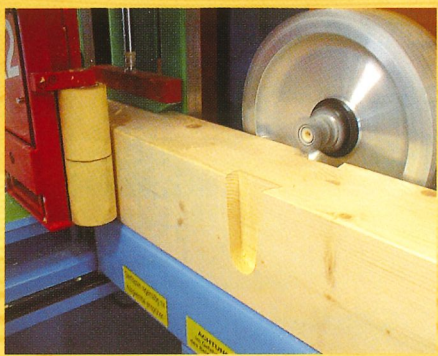
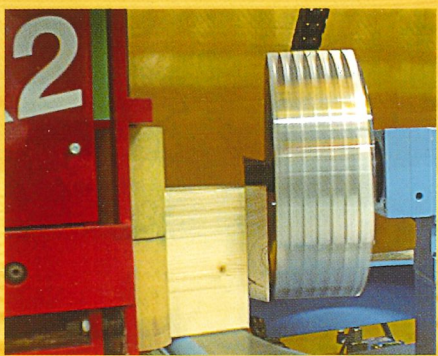


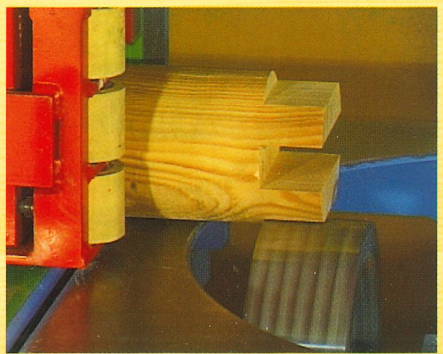
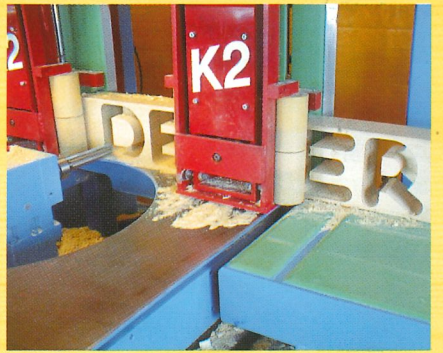
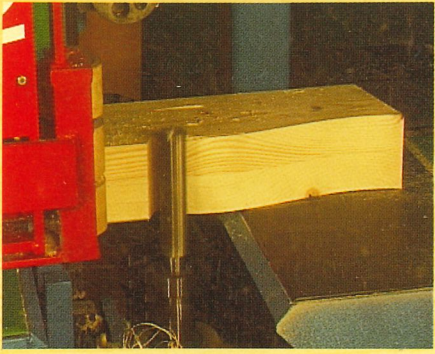
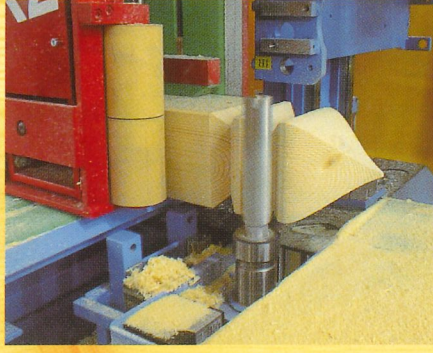
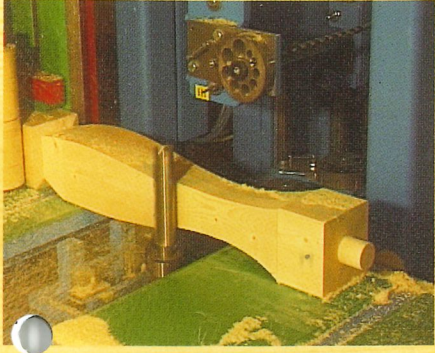
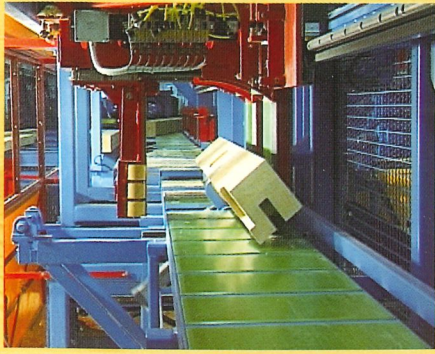
Graphic Display



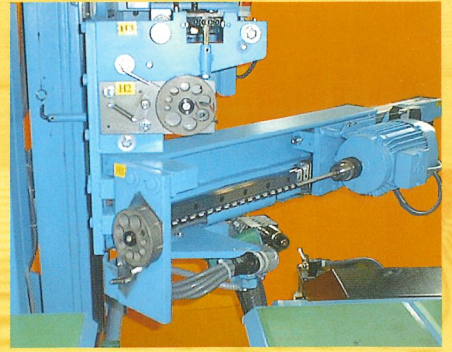
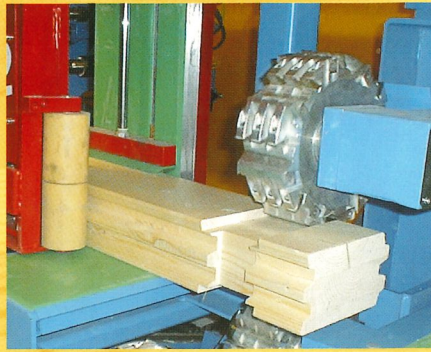
Programmed cuts and joinery can be saved and recalled

Splinter free operations guaranteed





Just one machine for the diversified needs of the wood construction industry



Hundegger GmbH

Hans Hundegger began developing the first fully automated joinery machine in the world in 1981. In just a few years, the success of the company and its products established Hundegger as the industry leader in Europe and throughout the world.

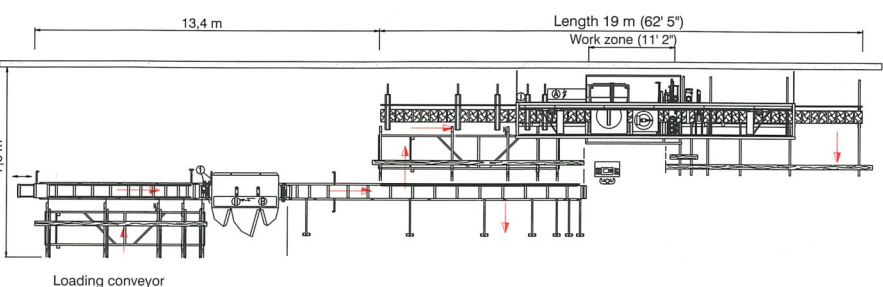
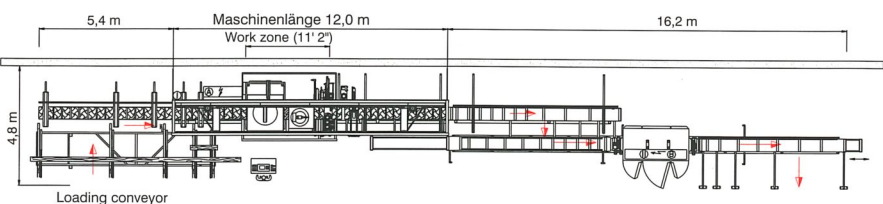
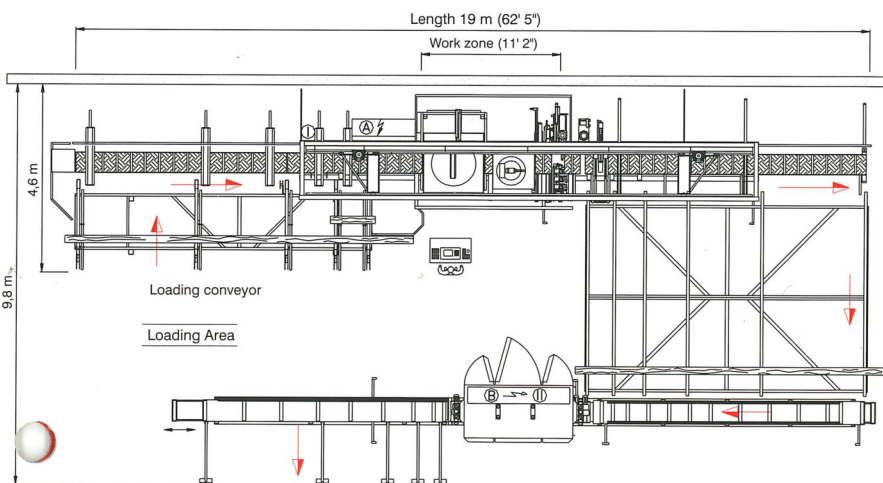
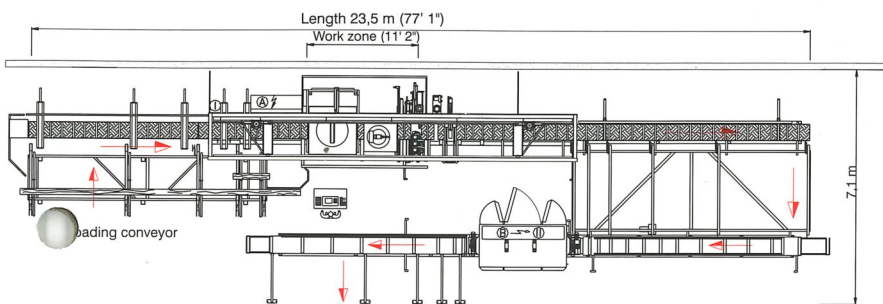
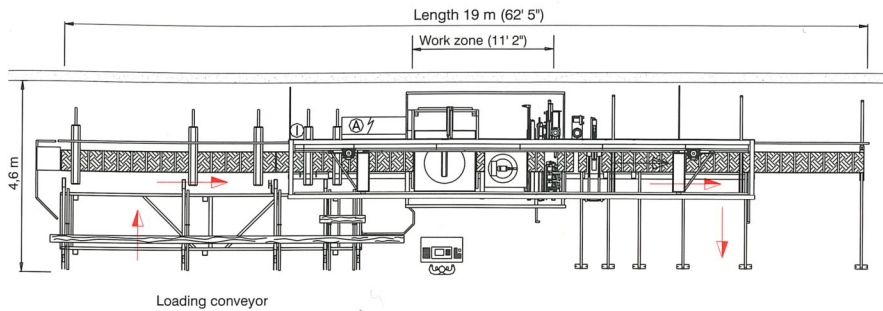
More than 1700 joinery and related machines are in operation. Customer feedback, experience and know-how allow Hundegger to stay in the forefront of automated technology. Currently Hundegger produces and ships over 150 joinery machines a year. The company also produces numerous other machines like planers, panel cutting machines, and Bamtec rebar matt fabricating machines.

There are currently 135 production and management people working with Hundegger.

The name Hundegger stands for quality and performance. Our machinery is known for its economical, durable, and easy use.



Schematics with or without the planer



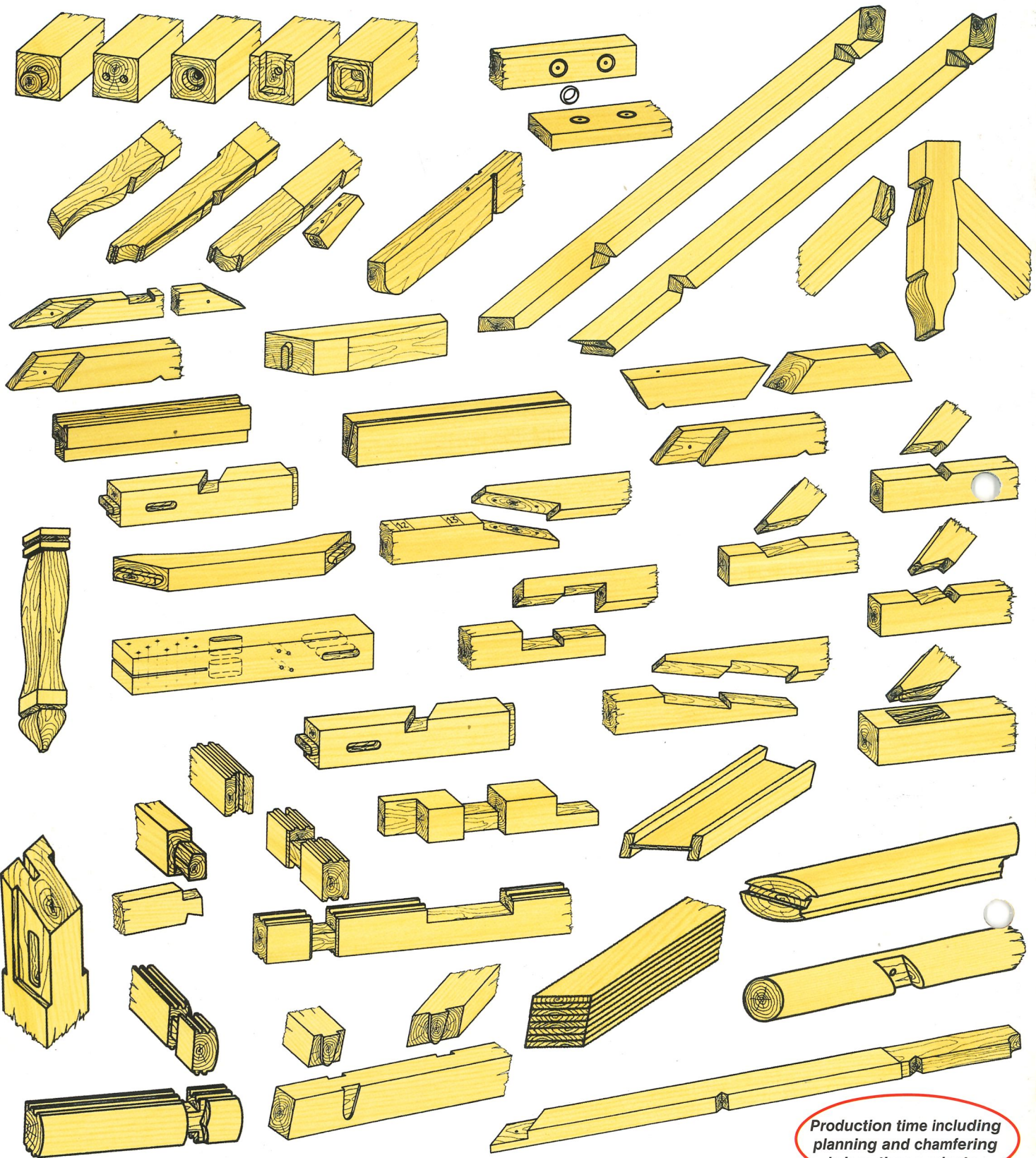
Hundegger

Offers many advantages:

- Quality and performance from the industry leader
- Great price to performance ratio
- One machine for every application
- Processing of extremely short parts (approx. 30 cm or 1 ft.)
- Optimizes cutting of several pieces from a single timber
- Minimizes waste - optimizes work sequence
- Accessories:
 - Material measuring,
 - Ink-jet-printing,
 - Marking (layout lines),
 - Labeling,
 - 4 Head H cutter for log homes,
 - Automatic unit unstacking, etc.
- Supports Job development and efficiency by:
 - Creating and storing Job and company data and reports
 - Estimating time and recording actual time
 - Creating order lists
 - Optimizing lumber units and parts
- Individualized Machine setup and configuration
- Free Software updates
- 2-Year Warranty

Put the experience and know how of over 1200 customers to work for you!

On average less than 10 seconds per milling operation.



**Production time including
planning and chamfering
is less than a minute.**

For more information please look at our video!

