

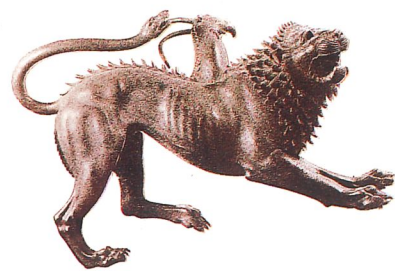
# BORING SYSTEM<sup>®</sup>

original maggi original maggi original maggi original maggi original maggi original maggi original maggi original maggi original maggi



WOODWORKING MACHINERY

**maggi** engineering



In the design and construction of our wood-working machinery, we are constantly working towards ingenious new solutions in order to eliminate fatigue and risks and guarantee excellent precision and easy use. "BORING SYSTEM" multiple boring machines are machines designed and constructed with special technical care, featuring a mechanical structure providing high rigidity and total solidity during the various machining phases. They guarantee convenience thanks to rapid machining and the possibility of changing the production programme. They are the result of our constant efforts in the development of highly innovative design solutions, which have enabled us to achieve improved quality in the woodworking machinery sector. This in our philosophy, and the satisfaction of our customers increases our pleasure in working for others.

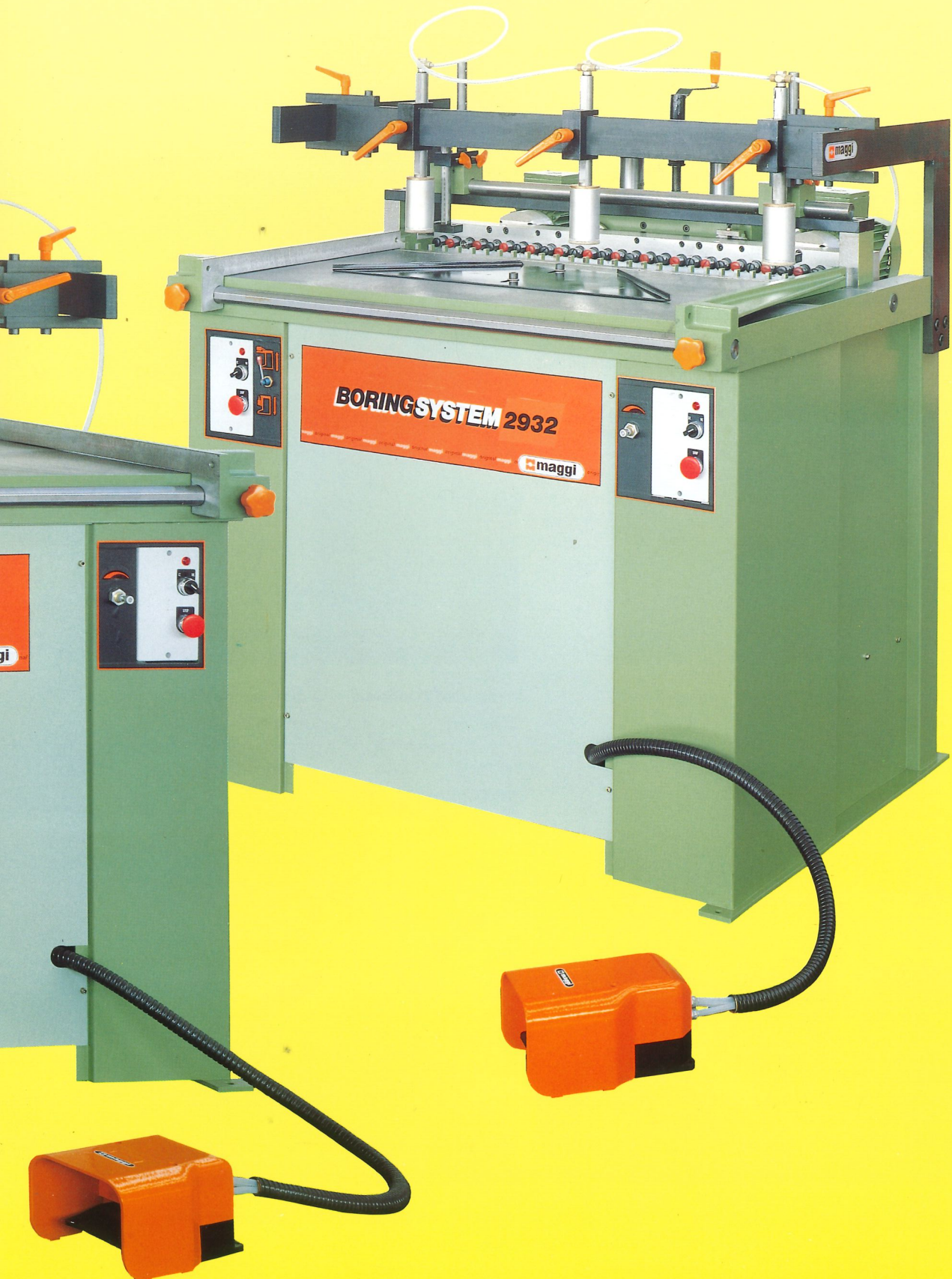
## **BORING SYSTEM 2232**

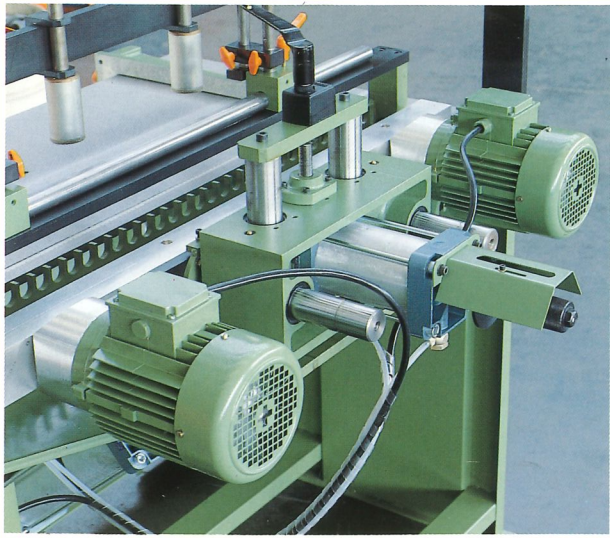


## **BORING SYSTEM 3532**

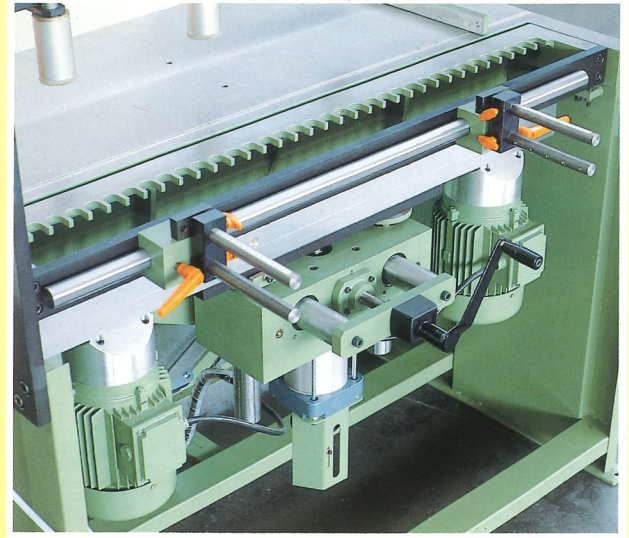


# **BORING SYSTEM 2932**

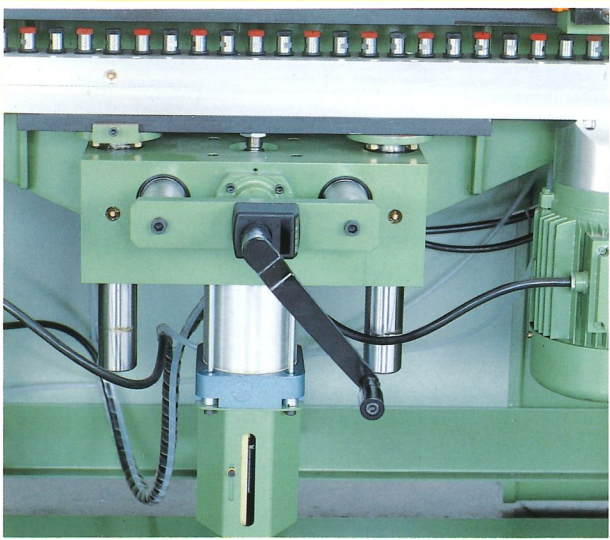




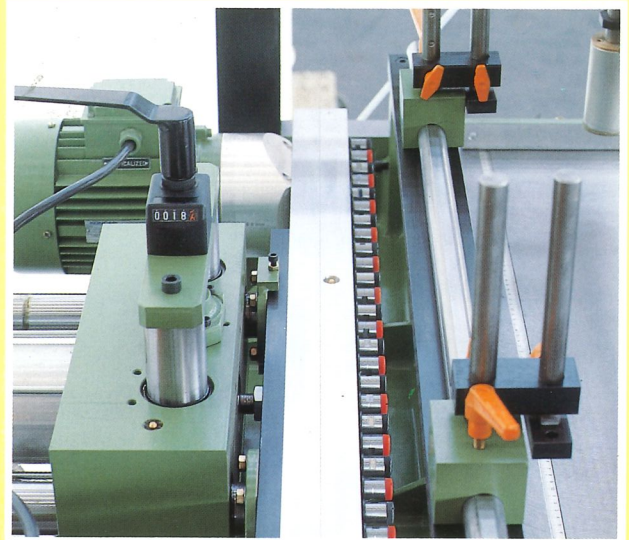
2 HP motor unit, 2800 rpm, in the versions with 29 and 35 spindles; in the 22 spindle version only one motor is mounted.



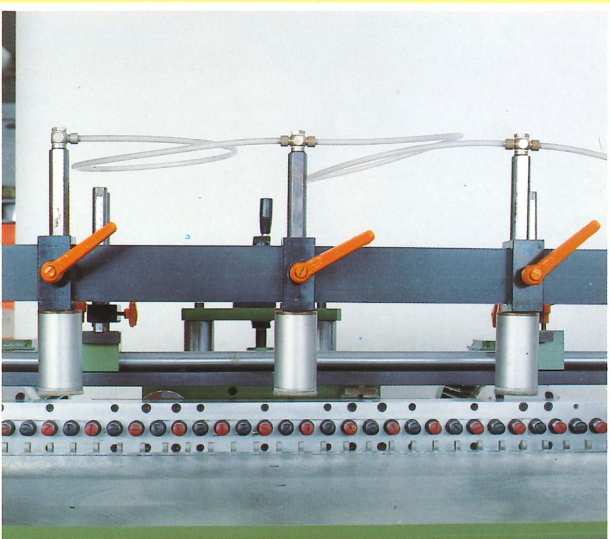
Vertically positioned boring unit.



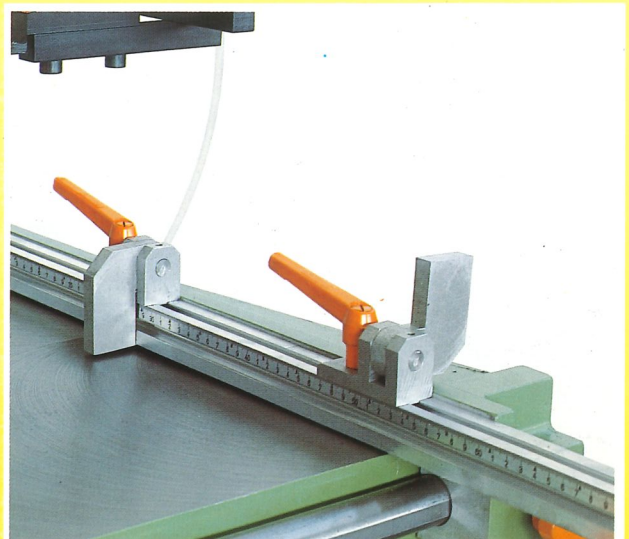
Air cylinder to drive spindle units and display for regulating boring depth.



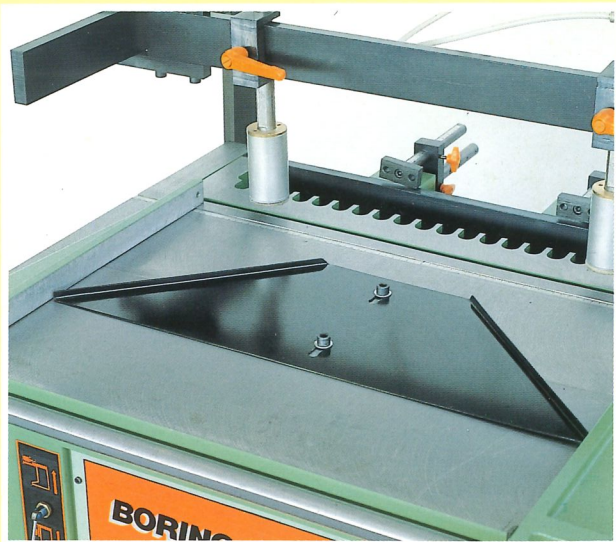
Measuring positioners for panel and spindle head unit.



Pressor unit for panel clamping.



Mechanical stops on the graduated rule.



Device for 45° boring.



Graduated scale showing head angle.

Number of drilling spindles . . . . .	22	29	35
Centre distance between drills	32 mm	32 mm	32 mm
Centre distance between the first and the last drill in the drilling head . . .	672 mm	896 mm	1088 mm
Maximal depth of drilling . . . . .	80 mm	80 mm	80 mm
Size of working table . . . . .	900 × 545 mm	1130 × 545 mm	1320 × 545 mm
Maximal dimensions of the work piece	876 × 2500 mm	1106 × 2500 mm	1296 × 2500 mm
Speed of spindle rotation . . . . .	2800 r.p.m.	2800 r.p.m.	2800 r.p.m.
Motor driving power . . . . .	1,5 kW	2 × 1,5 kW	2 × 1,5 kW
Supply voltage . . . . .	220/380 V, 50 Hz	220/380 V, 50 Hz	220/380 V, 50 Hz
Working air pressure . . . . .	0,6 MPa	0,6 MPa	0,6 MPa
Air consumption . . . . .	10 NI/cycle	10 NI/cycle	10 NI/cycle
Weight of the machine . . . . .	400 kg	550 kg	700 kg
Overall dimensions (length/width/height) . . . . .	1010 × 1000 × 1300 mm	1246 × 1000 × 1300 mm	1436 × 1000 × 1300 mm
Packing size (length/width/height) . . . . .	960 × 950 × 1000 mm	1210 × 950 × 1000 mm	1400 × 950 × 1000 mm