

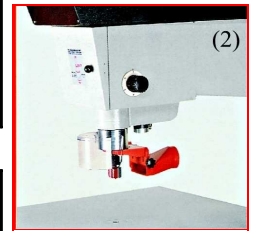
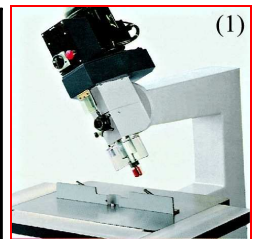


Pantografi a testa fissa e inclinabile  
Pin routers with fixed and tilting heads  
Pantographen mit festem und neigbarem kopf  
Pantographes a tête fixe ou inclinable  
Pantógrafos con cabezal fijo e inclinable

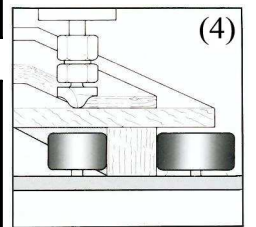
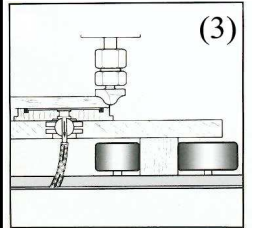
FC600 FC800  
FC915 FC830  
FC1030



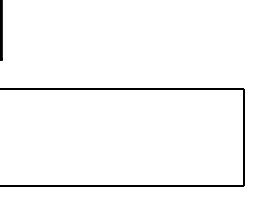
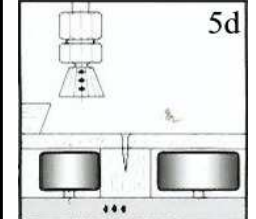
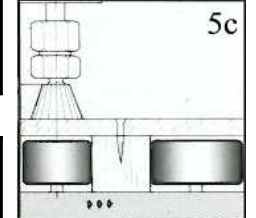
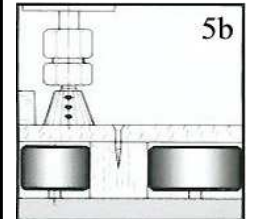
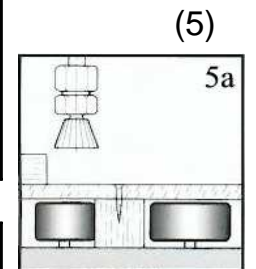
DATI TECNICI	FC 600	FC 800	FC 915	FC830	FC 1030	A RICHIESTA	
DISTANZA TRA MANDRINO E MONTANTE	mm	600	800	915	800	1000	Testa flottante per FC 915
DISTANZA MASSIMA TRA PIANO E MANDRINO	mm	225		330	250	300	Potenza motore Kw 0,37
CORSA VERTICALE DEL MANDRINO	mm	80		100	120	300	Potenza pompa lt/min 3
POTENZA DEL MOTORE	Kw	1,5/2,2	2,2/3	5/6	3,7/4,5	3,7/4,5	Pressione di lavoro bar 20/30
CORSA VERTICALE DEL TAVOLO	mm	160		200	-	-	
GIRI MANDRINO	g/1'	10,000÷20,000		10,000÷2000	12,000÷18,000		Testa inclinabile FC 600/800/830/1030 (1)
DIMENSIONI DI INGOMBRO	mm	1100x760x1830/1300x650x1830		1600x900x1750	1600x1000x1750/1800x1000x1750		Piano inclinabile
DIMENSIONI DI IMBALLO	mm	1000x600x1980/1200x600x1980		1500x700x1900	1500x800x1900/1700x800x1900		Cappe di aspirazione (2)
PESO NETTO	Kg	310	380	870	820	1000	Prolunga del piano (1)
DIMENSIONI DEL PIANO DI LAVORO	mm	650X480	750X600	900x700	900x770		Dispositivi per la lavorazione sotto squadra (5)
<b>A RICHIESTA</b>							Guida sul piano (1)
COPIATORE AUTOMATICO (4)							Motore maggiorato Kw 2,2/3 - 4,5/5,5 - 6,6
POTENZA MOTORE	Kw	-	-	0,25	-	0,25	Freno elettromagnetico
VELOCITA'	m/1'	-	-	1÷5,5	-	1÷5,5	Motore monofase per FC 600/800
<b>FISSAGGIO A DEPRESSIONE (3)</b>							Giri variabili FC 830/1030 - 2.000÷18.000 g/min
POTENZA MOTORE	Kw	-	-	0,25	-	0,25	La ditta si riserva la facoltà di apportare
CAPACITA' DELLA POMPA	m3/h	-	-	15	15	15	Eventuali modifiche tecniche o costruttive



GB TECHNICAL DATA	FC 600	FC 800	FC 915	FC830	FC 1030	OPTIONALS	
DISTANCE BETWEEN CHUCK AND FRAME	mm	600	800	915	800	1000	Floating head for FC 915
DISTANCE BETWEEN CHUCK AND TABLE	mm	225		330	250	300	Motor power Kw 0,37
VERTICAL STROKE OF CHUCK	mm	80		100	120	300	Pumping power lt/min 3
MOTOR POWER	Kw	1,5/2,2	2,2/3	5/6	3,7/4,5	3,7/4,5	Working pressure 20/30 bar
VERTICAL STROKE OF TABLE	mm	160		200	-	-	
CHUCK SPEED	r.p.m.	10,000÷20,000		10,000÷2000	12,000÷18,000		Tilting head FC 600/800/830/1030 (1)
DIMENSIONS	mm	1100x760x1830/1300x650x1830		1600x900x1750	1600x1000x1750/1800x1000x1750		Tilting platform
CRATE DIMENSIONS	mm	1000x600x1980/1200x600x1980		1500x700x1900	1500x800x1900/1700x800x1900		Suction hood (2)
NET WEIGHT	Kg	310	380	870	820	1000	Table extension (1)
TABLE DIMENSIONS	mm	650X480	750X600	900x700	900x770		Table translation devices (5)
<b>OPTIONS</b>							Fence on table (1)
AUTOMATIC FEED SYSTEM (4)							Motor power Kw 2,2/3 - 4,5/5,5 - 6,6
MOTOR POWER	Kw	-	-	0,25	-	0,25	Eletromagnetic brake
SPEED	m/1'	-	-	1÷5,5	-	1÷5,5	Single phase motor for FC 600/800
VACUUM CLAMPING (3)							Variable speed FC830/1030 - 2.000÷18.000 r.p.m.
MOTOR POWER	Kw	-	-	0,25	-	0,25	We reserve the right to introduce
PUMP CAPACITY	m3/h	-	-	15	15	15	Technical or building changes



D TECHNISCHE DATE	FC 600	FC 800	FC 915	FC830	FC 1030	SONDERZUBEHÖR	
ABSTAND ZWISCHEN STÄNDER UND BOHRER	mm	600	800	915	800	1000	Fiebkopf für FC 915
ABSTAND ZWISCHEN TISCH UND BOHRER	mm	225		330	250	300	Motorstärke Kw 0,37
VERTIKALER BOHRERLAUF	mm	80		100	120	300	Pumpenleistung lt/min 3
MOTORSTÄRKE	Kw	1,5/2,2	2,2/3	5/6	3,7/4,5	3,7/4,5	Arbeitsdruck 20/30 bar
VERTIKALER TISCHLAUF	mm	160		200	-	-	
BOHRERDREHZAHN	UpM	10,000÷20,000		10,000÷2000	12,000÷18,000		Schrägverstellbarer Kopf (1)
AUFSTELLMAßE	mm	1100x760x1830/1300x650x1830		1600x900x1750	1600x1000x1750/1800x1000x1750		Schrägverstellbare Platte
VERPACKUNGSMASSE	mm	1000x600x1980/1200x600x1980		1500x700x1900	1500x800x1900/1700x800x1900		Späneabsaughauben (2)
NETTOGEWICHT	Kg	310	380	870	820	1000	Tischverlängerungen (1)
TISCHABMESSUNGEN	mm	650X480	750X600	900x700	900x770		Translation (5)
<b>SONDERZUBEHÖR</b>							Anschlag auf dem Tisch (1)
AUTOMATISCHER VORSCHUB (4)							Motorstärke Kw 2,2/3 - 4,5/5,5 - 6,6
MOTORSTÄRKE	Kw	-	-	0,25	-	0,25	Elektromagnetische Bremse
GESCHWINDIGKEIT	m/1'	-	-	1÷5,5	-	1÷5,5	Wechselstrommotor für FC 600/800
VAKUUMSPANNUNG (3)							Regelbare Drehzahl FC 830/1030 - 2.000÷18.000 UpM
MOTORSTÄRKE	Kw	-	-	0,25	-	0,25	Die firma behält sich das Recht vor, eventuelle
PUMPENKAPAZITÄT	m3/h	-	-	15	15	15	Technische oder bauliche Veränderungen vorzunehmen



F DONNEES TECHNIQUES	FC 600	FC 800	FC 915	FC830	FC 1030	SUR DEMANDE	
DISTANCE ENTRE MANDRIN ET MONTANT	mm	600	800	915	800	1000	Tête flottante pour FC 915
DISTANCE MAXIMALE ENTRE PLAN ET MANDRIN	mm	225		330	250	300	Puissance du moteur Kw 0,37
COURSE VERTICALE DU MANDRIN	mm	80		100	120	300	Capacité de la pompe lt/min 3
PUISSANCE DU MOTEUR	Kw	1,5/2,2	2,2/3	5/6	3,7/4,5	3,7/4,5	Pression de travail bar 20/30
COURSE VERTICALE DE LA TABLE	mm	160		200	-	-	
REVOLUTIONS DU MANDRIN	t/1'	10,000÷20,000		10,000÷2000	12,000÷18,000		Tête inclinable (1)
DIMENSIONS D'ENCOMBREMENT	mm	1100x760x1830/1300x650x1830		1600x900x1750	1600x1000x1750/1800x1000x1750		Plateau inclinable
DIMENSIONS DE L'EMBALLAGE	mm	1000x600x1980/1200x600x1980		1500x700x1900	1500x800x1900/1700x800x1900		Hottes d'aspiration (2)
POIDS NET	Kg	310	380	870	820	1000	Rallonge du plan (1)
DIMENSIONS DU PLAN DE TRAVAIL	mm	650X480	750X600	900x700	900x770		Dispositifs pour le travail avec déplacement du plan (5)
<b>SUR DEMANDE</b>							Guide sur le plan (1)
COPIEUR AUTOMATIQUE (4)							Moteur augmenté Kw 2,2/3 - 4,5/5,5 - 6,6
PUISSANCE DU MOTEUR	Kw	-	-	0,25	-	0,25	Frein électromagnétique
VITESSE	m/1'	-	-	1÷5,5	-	1÷5,5	Moteur uniphasé pour FC 600/800
BLOCAGE A' DEPRESSION (3)							Vitesse variable FC830/1030 - 2.000÷18.000 t/min
PUISSANCE DU MOTEUR	Kw	-	-	0,25	-	0,25	Le maison se réserve le droit d'apporter des
CAPACITÉ DE LA POMPE	m3/h	-	-	15	15	15	Modifications techniques ou de construction

E DATOS TECNICOS	FC 600	FC 800	FC 915	FC830	FC 1030	A PEDIDO	
DISTANCIA ENTRE MANDRIL Y MASTIL	mm	600	800	915	800	1000	Cabeza flotante para FC 915
DISTANCIA MAXIMA ENTRE PLANO Y MANDRIL	mm	225		330	250	300	Potencia motor Kw 0,37
CARRERA VERTICAL DEL MANDRIL	mm	80		100	120	300	Portada bomba lt/min 3
POTENCIA DEL MOTOR	kw	1,5/2,2	2,2/3	5/6	3,7/4,5	3,7/4,5	Presión de trabajo bar 20/30
CARRERA VERTICAL DE LA MESA	mm	160		200	-	-	
GIROS MANDRIL	rpm	10,000÷20,000		10,000÷2000	12,000÷18,000		Cabezal en pendiente (1)
DIMENSIONES MAXIMAS	mm	1100x760x1830/1300x650x1830		1600x900x1750	1600x1000x1750/1800x1000x1750		Tablero en pendiente
DIMENSIONES DE EMBALAJE	mm	1000x600x1980/1200x600x1980		1500x700x1900	1500x800x1900/1700x800x1900		Capa de aspiración (2)
PESO	Kg	310	380	870	820	1000	Prolonga del plano (1)
DIMENSIONES DEL PLANO TRABAJO	mm	650X480	750X600	900x700	900x770		Dispositivo para el trabajo bajo escuadra (5)
<b>A PEDIDO</b>							Guida sobre el plano (1)
COPIADOR AUTOMATICO (4)							Motor potenciado Kw 2,2/3 - 4,5/5,5 - 6,6
POTENCIA MOTOR	Kw	-	-	0,25	-	0,25	Freno electromagnético
VELOCIDAD	m/1'	-	-	1÷5,5	-	1÷5,5	Motor monofase para FC 600/800
FISAJE A DEPRESION (3)							Revoluciones variables FC 830/1030 - 2.000÷18.000 rpm
POTENCIA MOTOR	Kw	-	-	0,25	-	0,25	La empresa se reserva el derecho de hacer
CAPACIDAD DE LA BOMBA	m3/h	-	-	15	15	15	Eventuales modificaciones técnicas o constructivas



Paoloni Macchine Srl  
Via F. Meda, 3 - 61032 Fano (PU) - Italy  
Tel. ++39.0721 854251 Fax ++39.0721 854001  
www.paolonimacchine.it info@paolonimacchine.it

