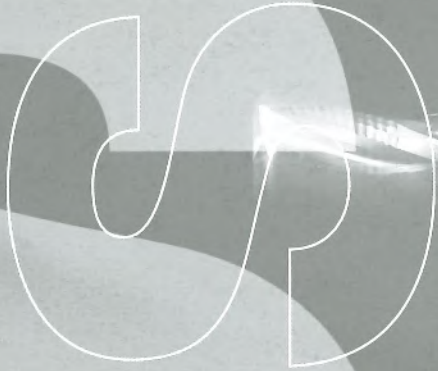


SE



Record 110

CNC machining centres



 **scm**

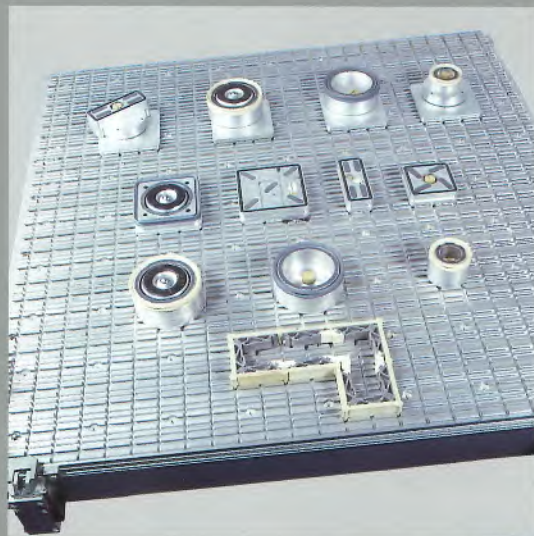
Record 110S

CNC machining centre

The inevitable choice for expansion of your company

Compact machining centre with enormous capabilities. Designed for expanding small and middle sized companies requiring versatility and flexibility, with high quality finish achieved even with small batch production.

A full range of accessories designed to meet component support, clamping and referencing. Set-up times are drastically reduced.



Easy facilities for quick set up

Multi-function aluminium worktable

A solid base for all types of workpiece holding



Modulset – a set of hold-down modules inserted in the grooves of the universal worktable to quickly and accurately follow the component shape. The workpiece can be raised from the worktable and clamped precisely in position.

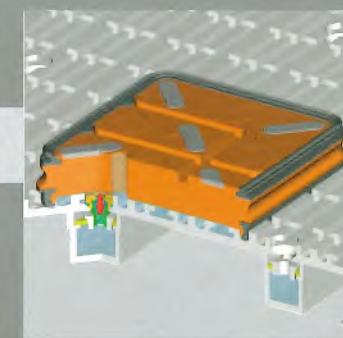


Where only the top surface of a component is to be machined, the **rubber hold-down seals** can be used to **clamp the component direct to the worktable**.

Special inverted T-shaped grooves and threaded holes provide a perfect fixing for all hold-down devices.



MPS suction cups
An entire suction cup range that can be inserted into the Multifunction worktable grooves. From different size and shapes, the suction cups can be overlapped and linked to one another.



The MPS system reduces worktable set-up times to the bare minimum.

When you insert the suction cups are inserted into the grooves of the worktable, an automatic valve immediately starts the vacuum system. Completely free of vacuum supply tubing, the MPS system is extremely easy to use.



scm



Record 110TV

CNC machining centre

The special machining requirement becomes extremely advantageous

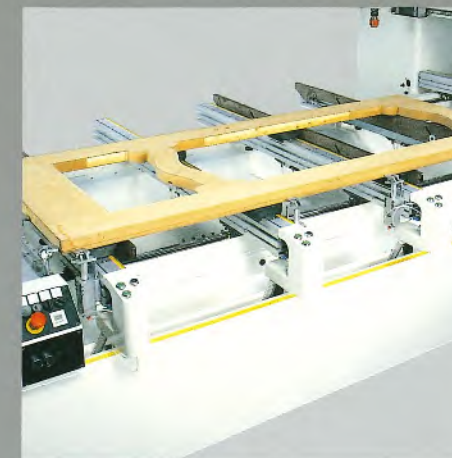
CNC machining centre ideal for machining components with holes and slots for hinges, locks and for special windows.

Suction cups for solid wood door cross and upright clamping

TV worktable

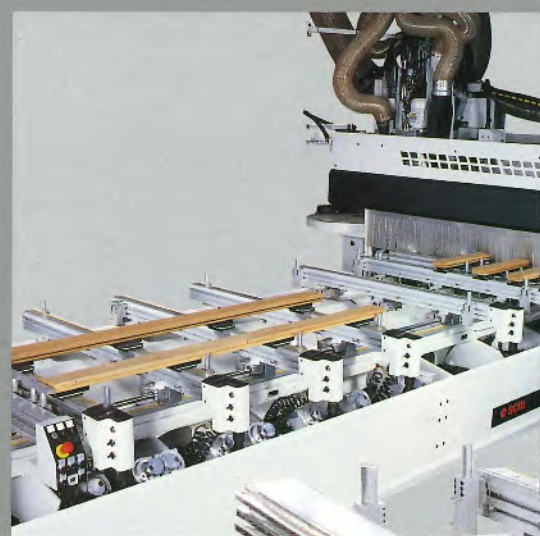
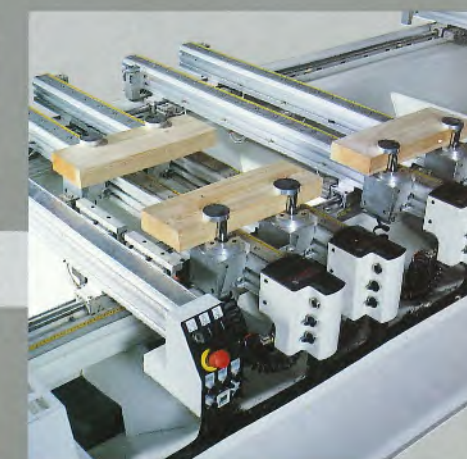
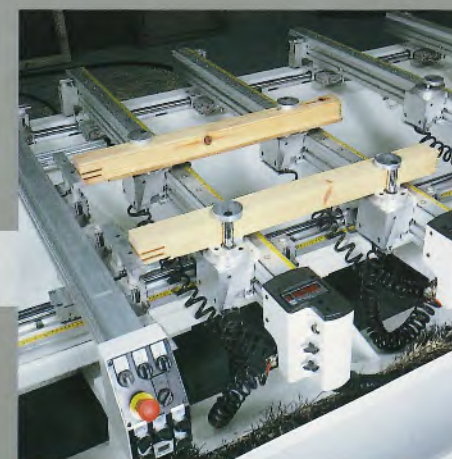
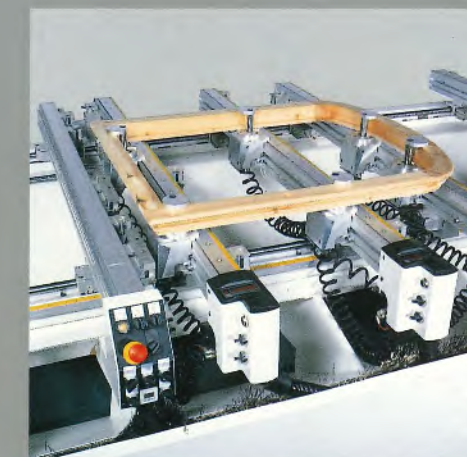
Versatile, simple and quick set up of all different types of component clamping

Suction cup flexibility enables fast worktable set ups to meet machining needs of customised doors. CNC- controlled automatic lifters make loading operation easy for the operator.



Reference stops for veneered panels

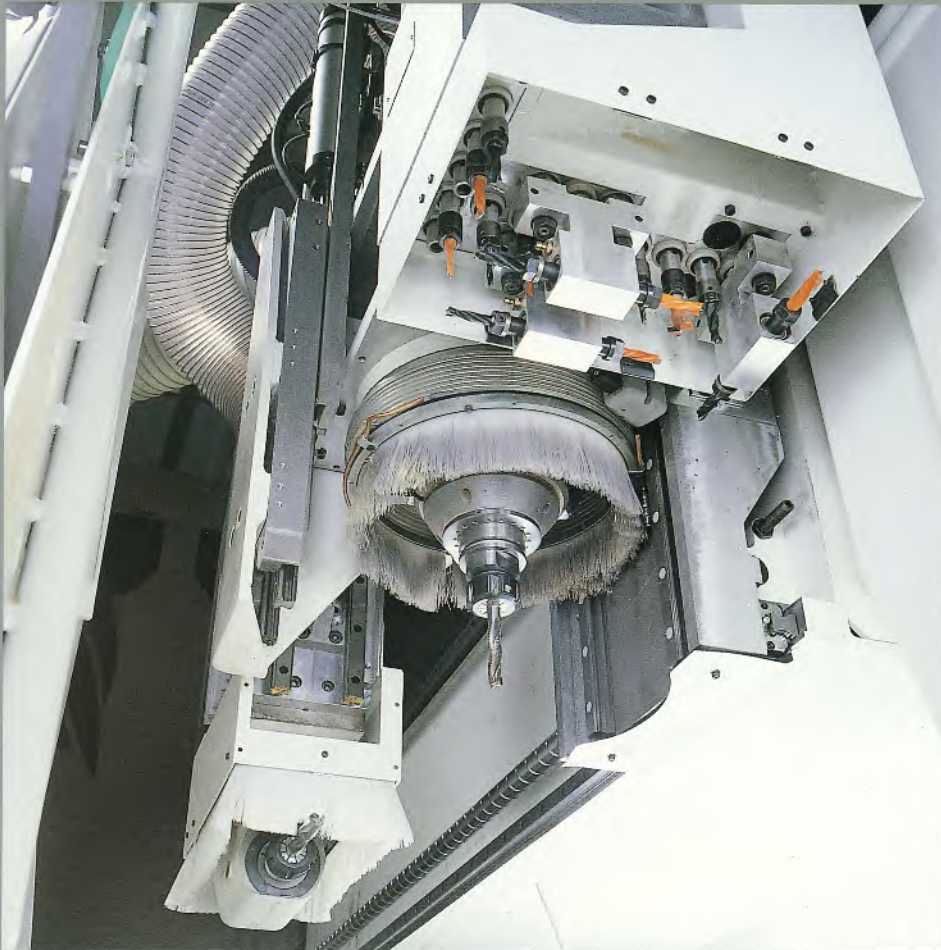
NWT system
Total clamping on linear or shaped components of any type of window



scm

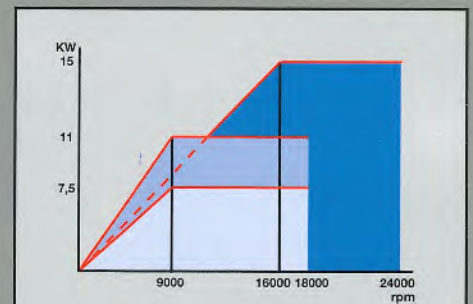


Machining head



Routing unit:

Mounted directly on the machine bed to guarantee high strength and durability. The electro-spindle is built into the single-piece base unit. Leading edge technology and performance levels guaranteeing a top quality finish.



Power 2000

7.5 - 11 - 15 kW

The right power for each application.

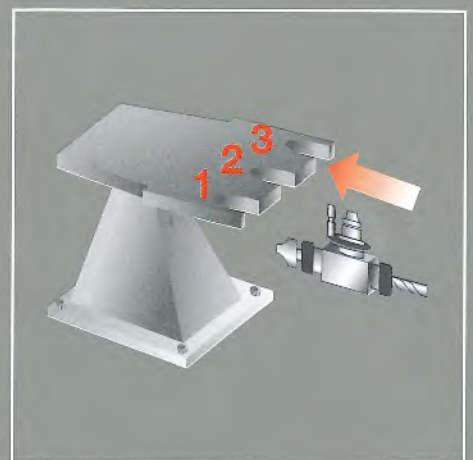


HSK 63 F tool taper which guarantees maximum clamping rigidity and precision to ensure a high-quality finish for all applications. Exclusive SCM taper cleaning system for precise coupling under any machining conditions.



Rapid 12

Automatic 12-position tool changer for machining different types of profiled components all during the same machining cycle.



TRK – Additional tool magazine connected to the machine side

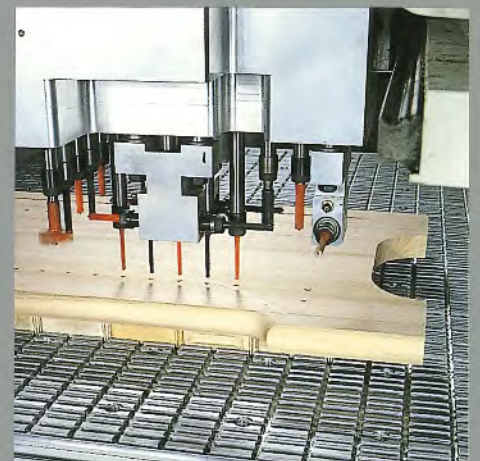
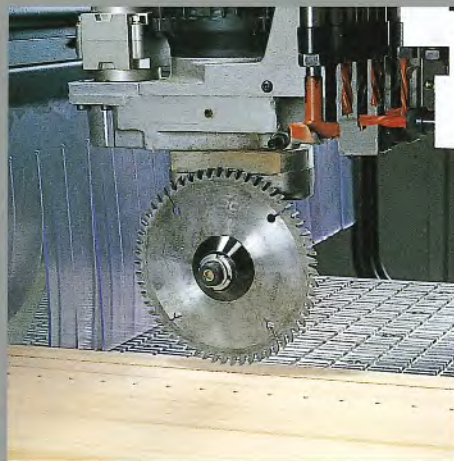
Ideal for big angle drive units or for tools with big diameter



Vector rotary axis enables the use of special angle drive units which can achieve 0-360° rotation from the CNC

Saw blade unit. Can rotate from 0 to 90° or from 0 to 360°, CNC controlled. Fast and powerful for sawing any type of material.

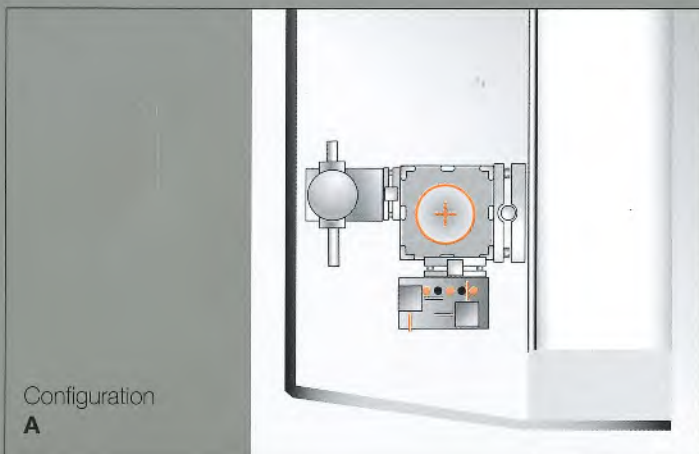
Drilling unit with 9 or 18 independent drilling spindles specifically designed for solid wood.



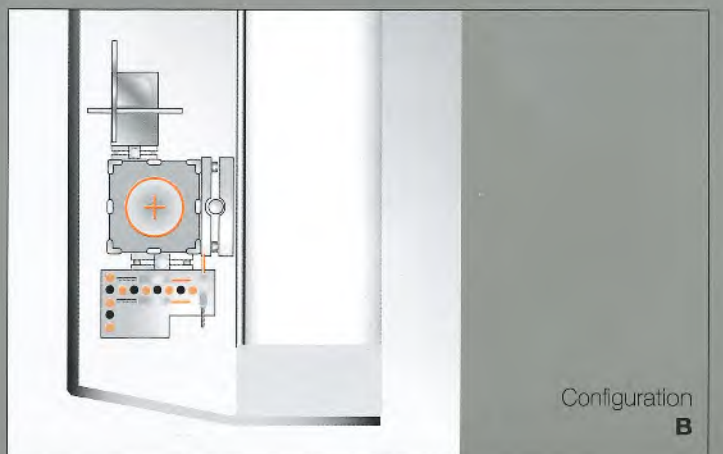
Universal K2 unit for horizontal-axis machining.



Mechanical presser with ball disc or chrome-plated steel disc.



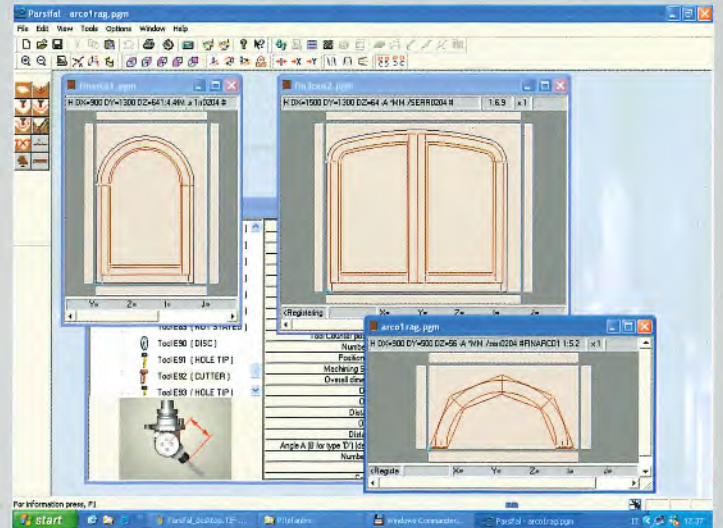
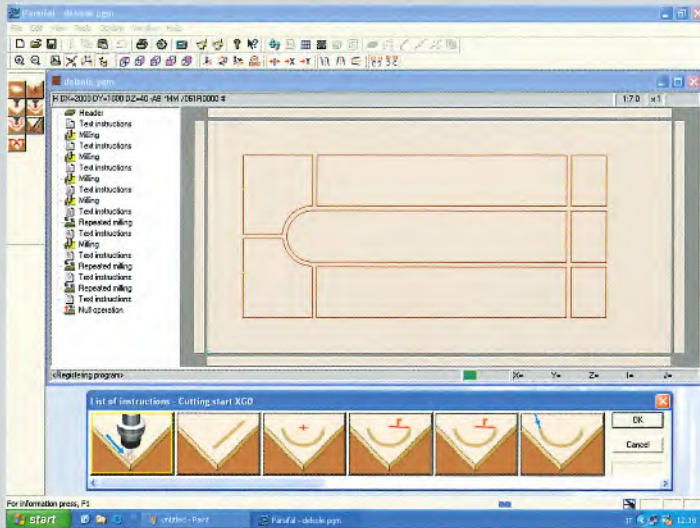
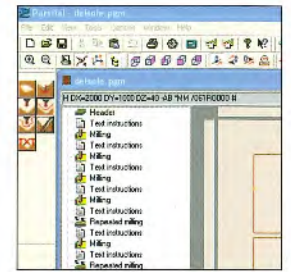
Configuration
A



Configuration
B

Numerical Control unit and software

High calculation power



Operator interface with graphics to enable machine programming and control even easier.

- Machine functions handled using a practical and fast control panel
- Programs can be generated even without a deep technical knowledge using an Editor with graphical icons and examples on video clips. Completely realized using Windows operating system.

Xilog Plus Doors and windows

Programming macro door and window machining.

- Used to generate the tool paths of each step of door and window machining process, simply and easily.
- For customised door or window, all corresponding programs can be displayed in real time.



CNC and OFFICE PC

A high-power CNC on an office PC with a Windows interface. A cost-effective solution combining high-power processing and ease-of-use. The perfect combination finally realised. This solution means you can use the CNC for all the functions normally handled by a PC:

- Internal company network connections
- All kinds of PC applications
- Adding data from a floppy disc or CD-ROM and remote connections.

TELESOLVE

A remote diagnostics system which allows the SCM assistance service technicians to operate on the machine in real time for:

- PLC logic diagnostics, machine parameter diagnostics, etc.
- Real-time updating of the CNC software.

Working areas

Record
110S

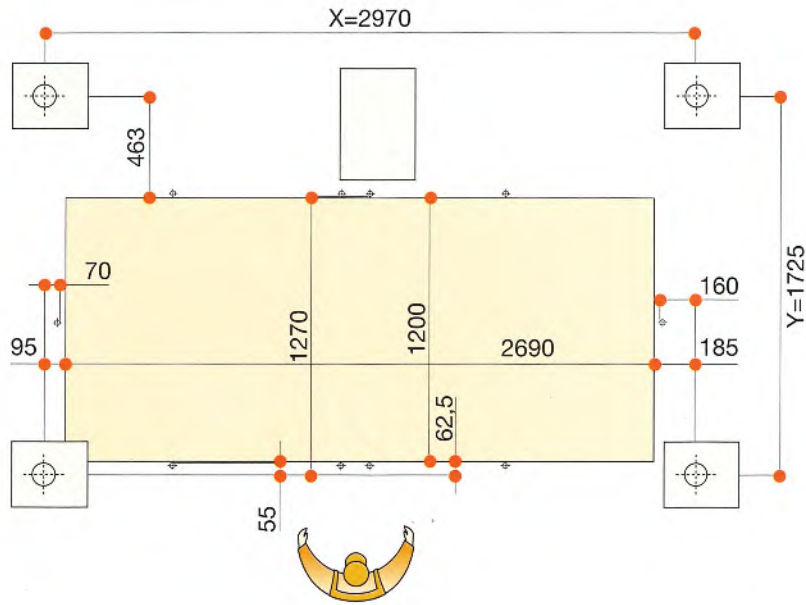
Record
110TV



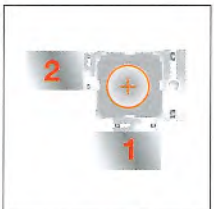
Configuration A



Configuration B



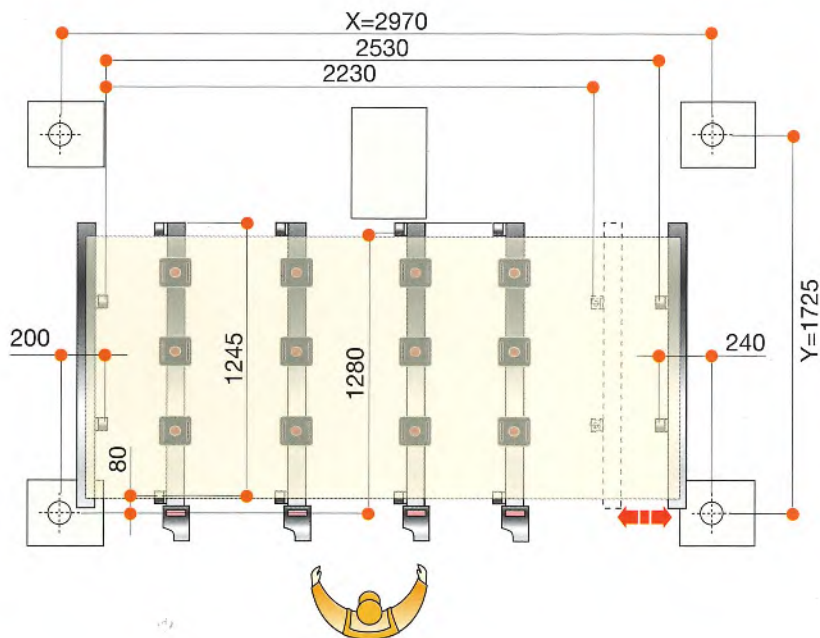
Record
110S



Configuration A



Configuration B



Record
110TV

Total safety
and security,
what you
should expect

Noise levels

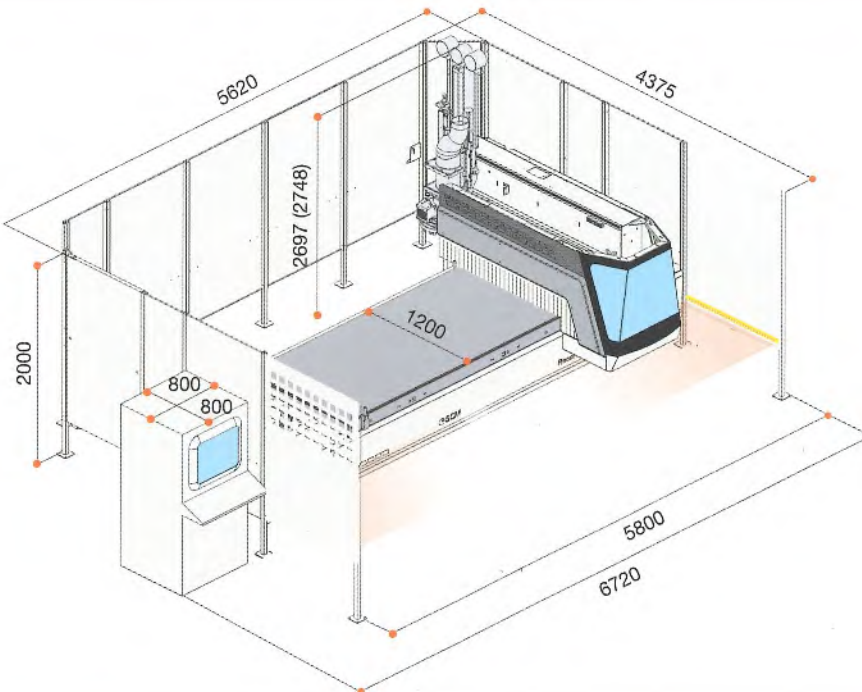
Record 110	No-load operation without extraction air	Machining
Average noise level on measurement surface dB (A)	67,7	81,8
Emitted noise level dB W (A) [mW (A)]	86,7 [0,5]	100,8 [12,0]
Noise level at operator position dB (A) [dBmax]	67,7	84,4 [91,0]



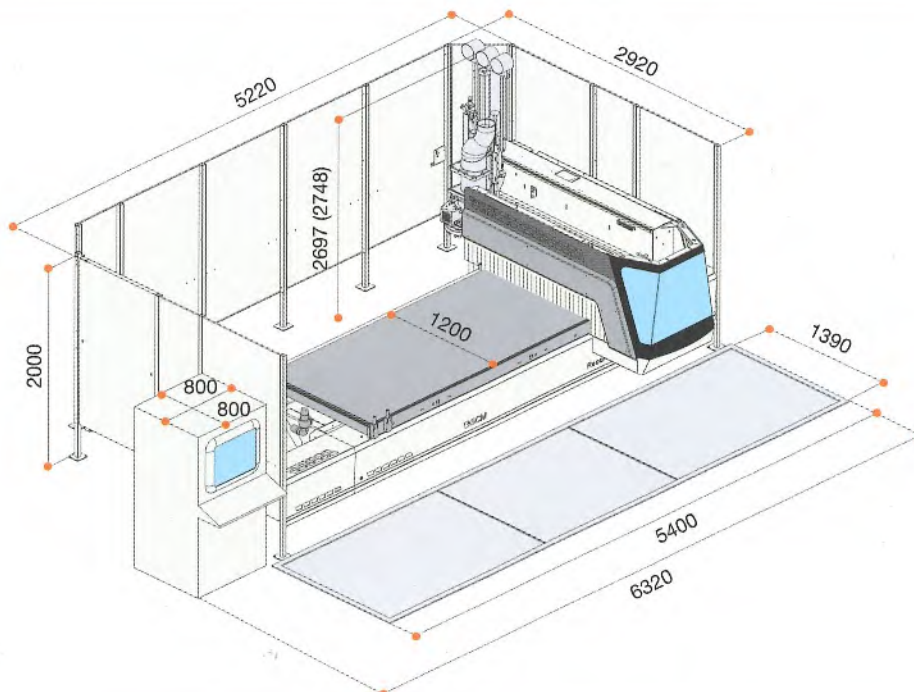
Dimensions

Record
110S

Record
110TV



Record
110
Version **A**



Record
110
Version **B**

Technical data

Axis speeds:	X=60, Y=45, Z=25 m/min
Electro-spindle power:	7.5 kW - (11 kW - 15 kW Opt)
Main routing unit tool capacity:	12 pos.
Drilling unit tool capacity:	9 - 18 independent spindles
Universal K2 unit:	3 kW from 6.000 to 18000 rpm
Sawing blade unit	2.2 kW 0-90° ON/OFF

In this catalogue, machines are shown with options. SCM reserves the right to modify technical specifications without prior notice, provided that such modifications do not affect safety as per C.E. certification.

Woodworking machinery: the widest range of products

scm



SCM has been producing woodworking machinery for more than 50 years and represents the nucleus of SCM Group. With a total of 3000 employees, 15 factories and an export of 70%, this Group is one of the world's top producers of woodworking equipment. SCM produces the widest range of machines for secondary wood machining, from machines for small woodworking companies to CNC work centres, to high production integrated lines for the machining of solid wood. SCM is certified according ISO 9001 Standards. Specialized technicians all over the world are able to supply an efficient and rapid after-sale service to SCM customers because full use is made of a system of remote computerised diagnostics. SCM can also utilize an internal structure of SCM Group, the CSR-Study and Research Consortium. CSR-Study and Research Consortium uses advanced experimental systems. This ensures that all machines satisfy the strictest international standards in terms of safety, ergonomics and environmental hygiene.





SCM GROUP spa - Via Emilia, 71 - 47900 Rimini (RN) - Italy
Tel. +39/0541/700111 - Fax +39/0541/700181 - www.scmgroup.com - E-mail: scm@scmgroup.com