

# Only Weinig offer these advantages and only the Hydromat 30 N:

### Technical details that count:

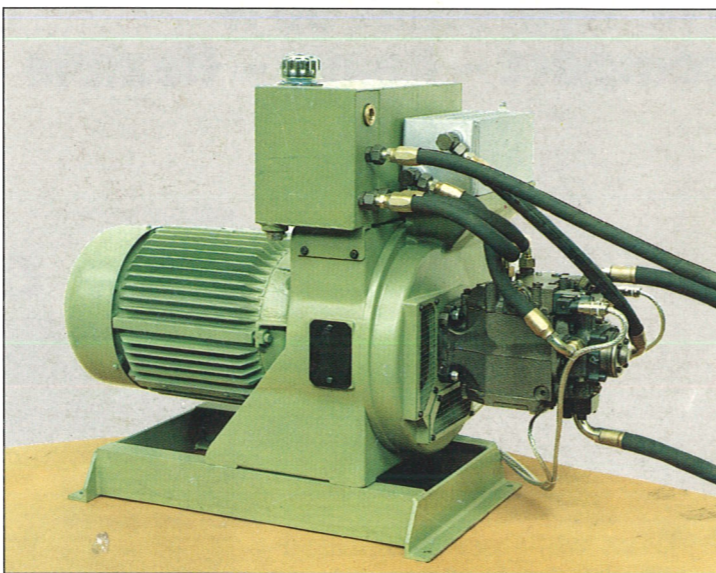
- Working width\* 300 mm
- Working height\* 200 mm
- Motor capacity of cutting spindles 5.5 kW (7.5 hp)
- Speed of cutting spindles 6000 rpm
- Diameter of cutting spindles 50 mm
- Cutting circle diameter of horizontal spindles 110 - 240 mm
- Cutting circle diameter of vertical spindles 100 - 230 mm
- Throughfeed, infinitely variable:
  - mechanical drive 5.5 kW (7.5 hp) 6- 36 m/min.
  - mechanical drive 7.5 kW (10 hp) 8- 48 m/min.
  - hydraulic drive 15 kW (20 hp) 6- 60 m/min.
  - hydraulic drive 22 kW (30 hp) 8- 80 m/min.
  - hydraulic drive 30 kW (40 hp) 9- 90 m/min.
  - hydraulic drive 30 kW (40 hp) 10-100 m/min
  - hydraulic drive 30 kW (40 hp) 12-120 m/min
- Diameter of feed rollers above table 170 mm
- Width of feed rollers 5 x 30 mm
- Diameter of driven table rollers 110 mm
- Adjustment range of feed table and right infeed-fence 10 mm
- Adjustment range of vertical spindles under table 40 mm
- Adjustment range of horizontal spindles (axial) 30 mm
- High capacity spindles with tolerance-free precision ball bearings
- Hydraulically clamped out-board bearings on the horizontal spindles
- Pneumatic pressure to feed rollers and pressure bars
- Hardened tables and fences
- \* at a tool cutting circle of 163 mm.

### Your personal Hydromat

- We can adapt your Hydromat to your specific requirements with special equipments.
- Those are:
  - Increase of spindle motors up to 37 kW (50 hp)
  - Special table plates and profile guides
  - Special version for planing mills (Model R)
  - Additional feed rollers for short workpieces at max. feed speed of 60 m/min.
  - Electric spindle brakes
  - Safety covers for feed rollers
  - Mobile spindle for workpieces of random width
  - Hopper feeds
  - Complete handling systems and production lines
  - Built-in profile and straight jointers
  - C.M.A./O.M.A.: measuring and indicating systems for reducing set-up times
  - ATS: motorised positioning system with memory for left and top spindle
  - Mechanical and electrical digital read-outs
  - Motorised width and thickness adjustment
  - Special splitting elements, motor rating up to 45 kW (60 hp)
  - Automatic oil pump with time relay
  - Four-side perforating facility



By extending the number of spindles even complicated profiles can be produced.



With the hydraulic feed the Hydromat 30 N has an output of up to 120 m/min. (380 ft./min.).

Subject to technical alterations. Illustrations with some special equipment and in part without covers for feed rollers.

**Michael Weinig (UK) Ltd**  
 5, Blacklands Way Abingdon Business Park  
 Abingdon, Oxon OX14 1DY  
 Telephone: Abingdon (0235) 34494  
 Telex: 837641 WEINIG Fax: (0235) 35767

**Michael Weinig GmbH**  
 Weinigstrasse 2/4, Postfach 1440, D-6972 Tauberbischofsheim, Telephone (0) 9341/86-0,  
 Telex 689511, Telefax (0) 9341/7080, West Germany

# Hydromat 30 N

## The beam planer. Faster and Better.



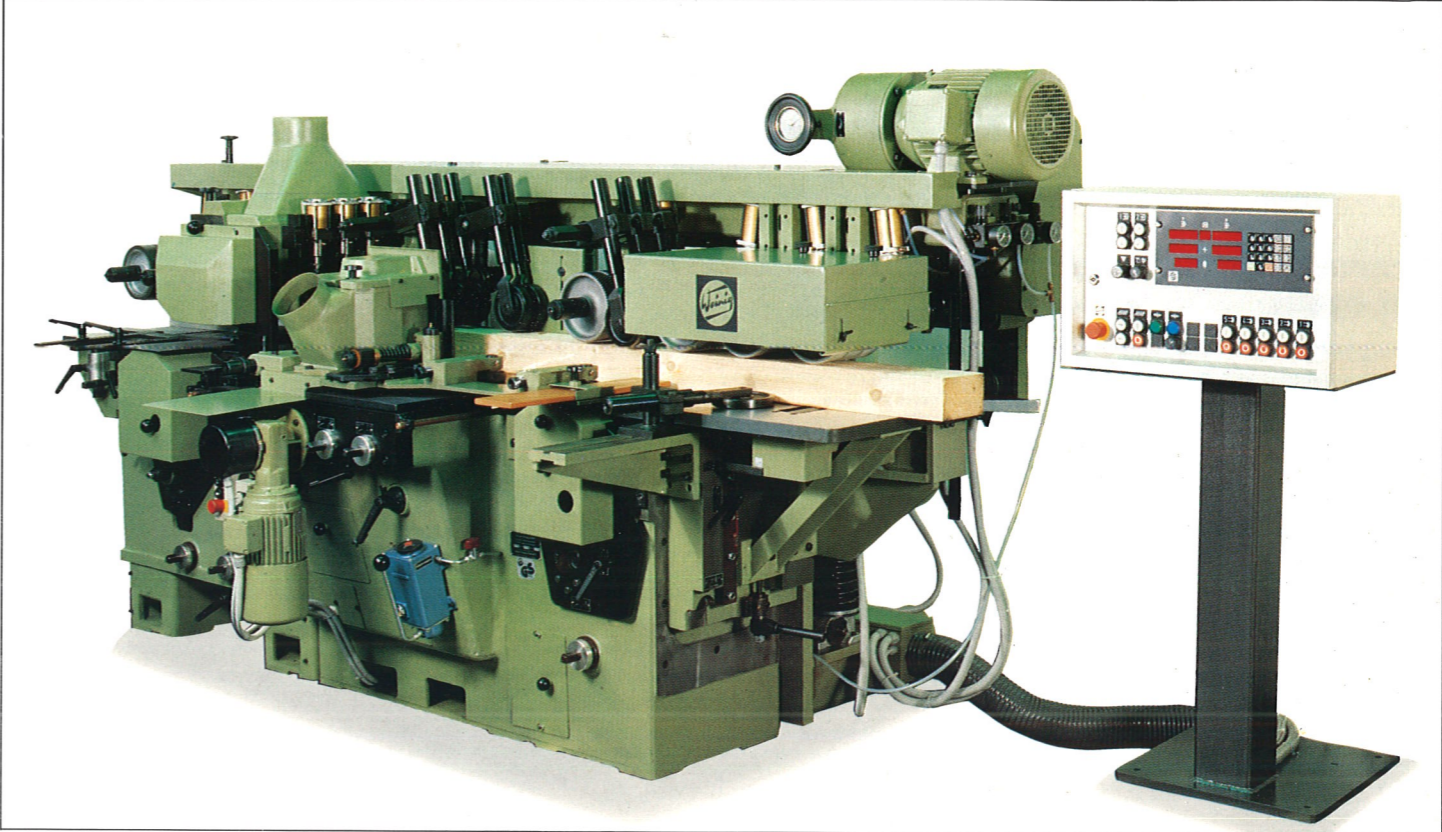
**If you need more than 20 minutes for this assortment then you still have the wrong beam planer.**



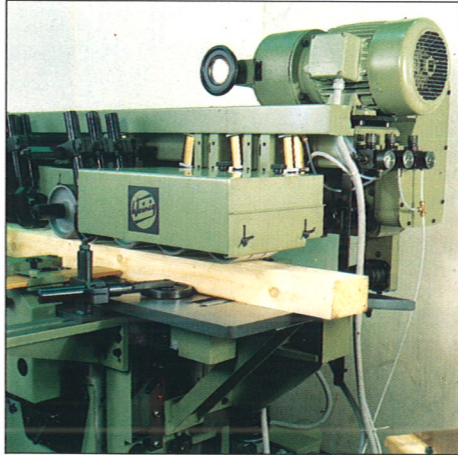
Your old standard machine is too slow. It still planes daggedly one side after the other in the old fashioned way. What is more the finish is rough and inaccurate. You can't afford to work like this any longer today. Wages are too high and competition is too strong. This is why you now need the Hydromat 30 N. Why? Because it simultaneously planes all four sides and gives you a beautiful smooth finish.

And it will mould as well if you want it to. This precision machine has been developed from the Hydromat 30, a machine which is operating in the woodworking industry on all five continents. Like all other Weinig machines the Hydromat 30 N has a cast frame which ensures stability without which no modern high speed machine can work precisely. The modular element system enables you to select almost

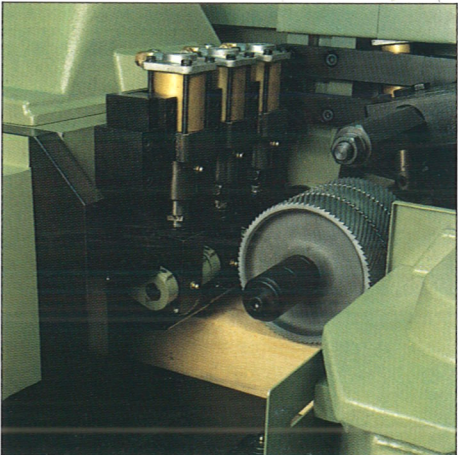
any spindle arrangement you may require. There is a choice of mechanical or the even faster hydraulic feed system given. The feed system (with cardan driven rollers above and in the table) will feed even green timber reliably through the machine. This machining system with jointers and "Hydro tools" on all spindles guarantees long tool life and a constant smooth surface finish.



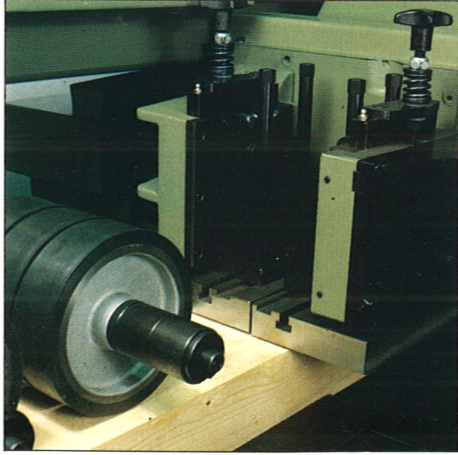
**The Hydromat 30 N  
compact – heavy – flexible – fast – with a super finish**



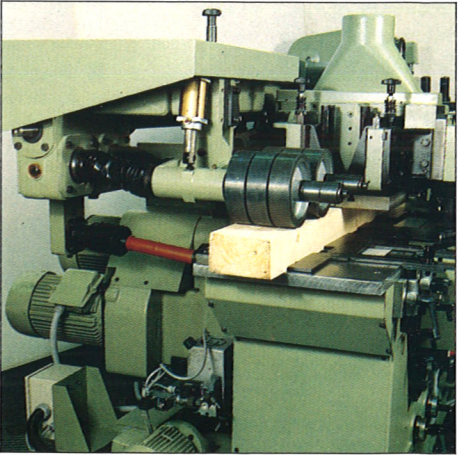
1



2



3



4

1. Even wet stock is handled reliably and safely.
2. This is the divided pneumatic chip breaker in front of the top spindle, with three chromed steel rollers per shaft.
3. The divided pressure bars after the thickening spindle with outfeed rollers.
4. The pneumatic pressure for the feed rollers. Cardan drive!