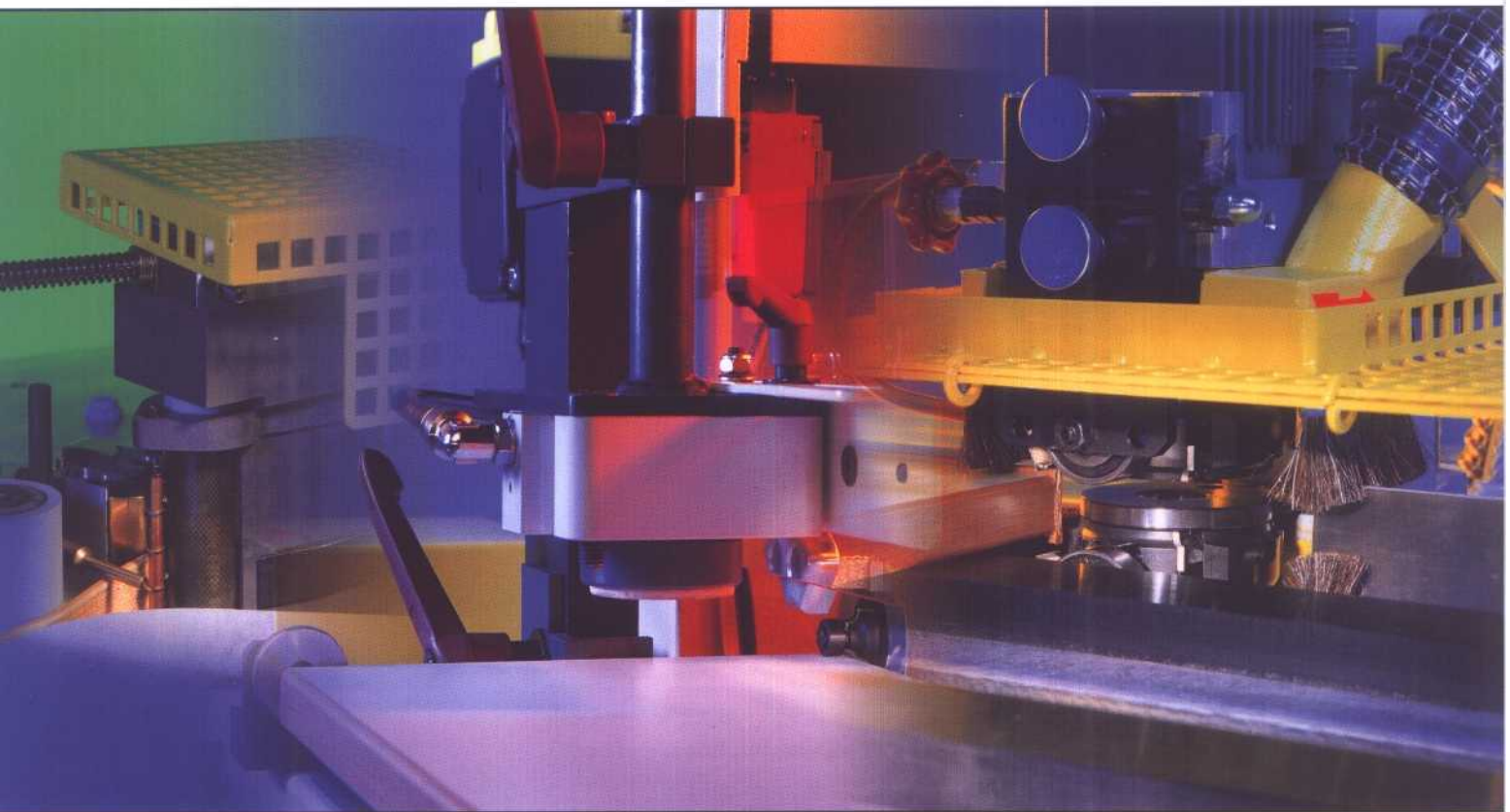


# Edgebanding and trimming machines

## Optimat KTD 720, FTK 130, FTF 200



**Optimat** | **profi line**



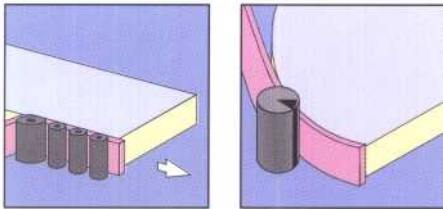
# Shaped parts and straight edges

## Optimat KTD 720 - the „one for all jobs“

### New Machine Concept

The KTD 720 is not only a new machine, it represents a flexible machine concept.

The goal of the new development was to have a machine not only for efficiently and reliably gluing a series of formed parts but also for processing smaller quantities of straight parts.



### Flexible System

The glue is applied to the edge banding material. When gluing internal radii, the pressure bar can be quickly removed.

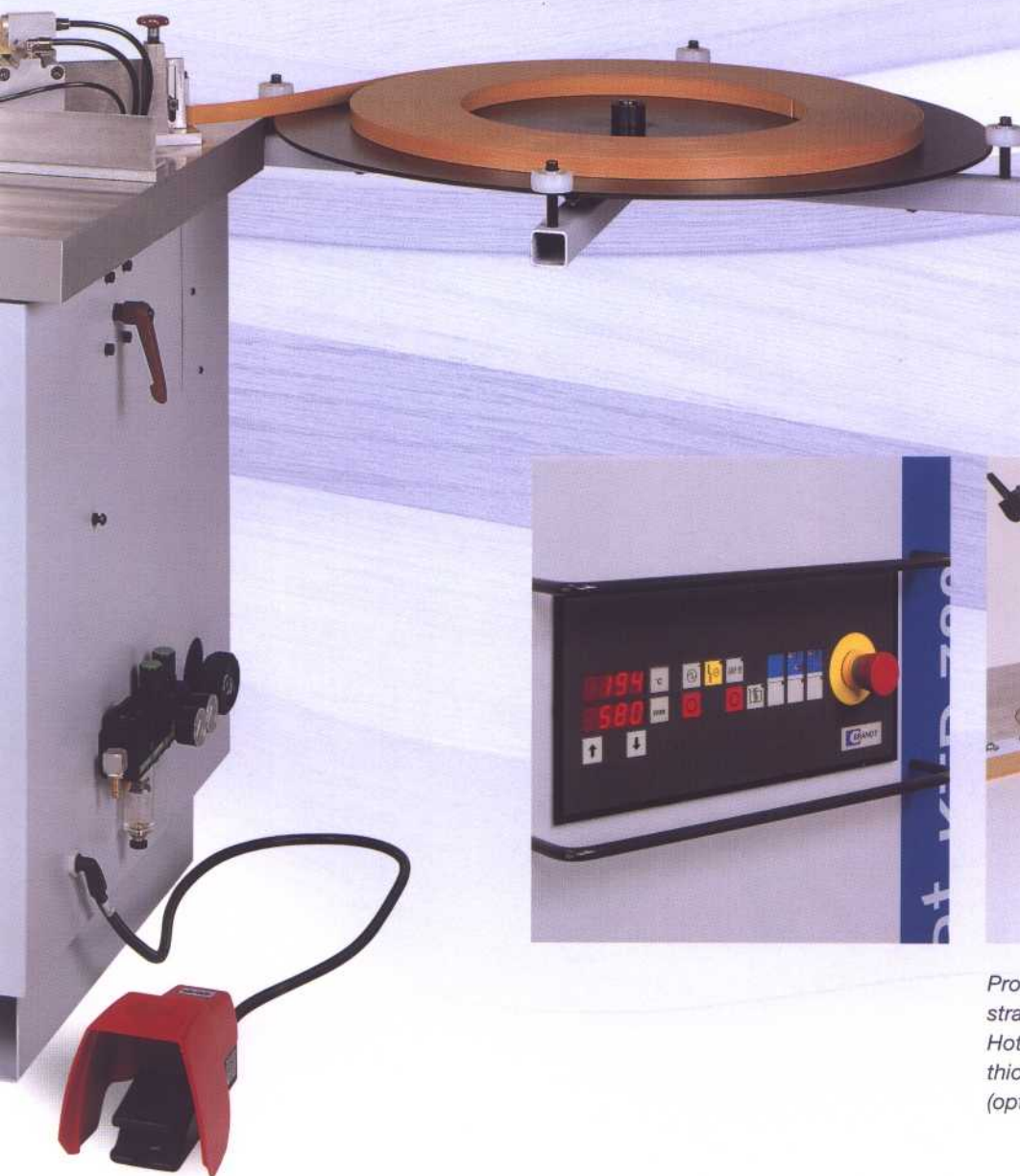
#### Option:

- Additional heating for thick PVC edges
- Automatic feed device

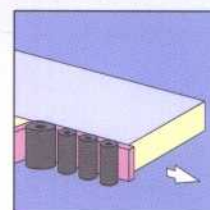
#### Coil cut off with 3 possibilities:

- Automatic by switch when processing straight workpieces.
- By foot pedal activation when processing contour shaped parts.
- By pre-selection of edging length via input of digital length counter.





*Processing of straight edges. Hot air unit for thick PVC edges (option).*



Technical Data	Optimat KTD 720
Workpiece length	min. 180 mm
Workpiece thickness	10 - 55 mm
Workpiece width	min. ca. 30 mm
Edge thickness	0,5 - 1,0 mm (with max. 60 mm edge height) 0,5 - 3,0 mm (with max. 30 mm edge height)
Internal radius	min. 25 mm plus edge thickness
Feed control	4 - 9 m/min.
Connected load	approx. 3 kW
Electrical connection	400 V - 3. Ph. - 50 Hz.
Pneumatic connection	6 bar
Working height	910 mm
Dimensions (without roll plate) LxW	1320 x 860 mm
Weight	approx. 280 kg

All rights for technical changes withheld. Individual machines shown could include options.

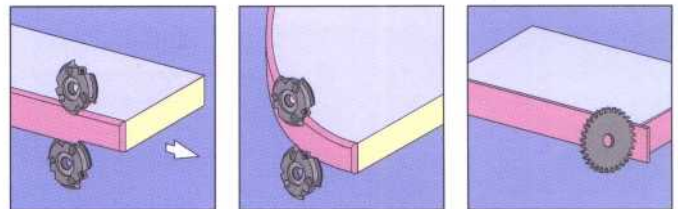


# Flush trimming of shaped parts clean - reliable - efficient

## Ideal supplement:

The FTK 130 has been conceived as a supplement to the new universal edge banding machine KTD 720. Although it can be used for straight workpieces, the main application of the FTK 130 is shaped workpieces where internal as well as external radii can be easily processed.

**Formed Part Trimming Technology**  
In order to process internal and external contours, the trimming motors must be mounted vertically. Standard equipment also includes the motorized spreading device for formed parts. Central bumper rings as well as precisely adjustable upper and lower workpiece tracing are also standard (double tracing rollers for straight, simple tracing rollers for formed workpieces). Trimming motors: 200 Hz, each 0.35 kW, 12.000 rpm, driven by a static frequency changer including electronic motor braking.



## Trimming Straight Edges

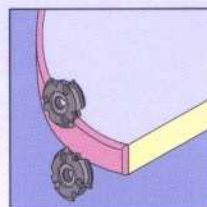
For trimming straight workpieces flush, double roller tracing units are used; the central bumper rings are replaced by workpiece fences.





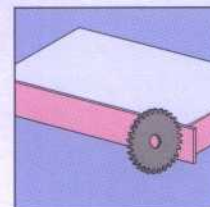
#### **Flush trimming of shaped parts**

Workpiece supported by spacer plate, manufactured individually according to the workpiece shape. For sensing purposes the single sensing rollers are mounted.



#### **End trimming unit EK 13**

This optional end trimming unit is dedicated for exact end trimming of overhanging edge materials on shaped and straight workpieces.



#### **Technical Data**

Workpiece thickness (radius trimming)	approx. 16 - 55 mm
Workpiece thickness (bevel trimming)	approx. 12 - 55 mm
Workpiece width	min. approx. 30 mm
Internal radius	min. approx. 35 mm (depending on edge radius and workpiece contour)
Edge thickness	max. 3 mm
Trimming tool	2 x reversible radius cutting R = 3 mm, 11.800 r.p.m.
Connected load	0,7 kW
Electrical connection	400 V - 3 Ph. - 50 Hz.
Pneumatic connection	5 bar
Extraction	1 x ø 80 mm
Working height	910 mm
Dimensions LxW	1320 x 860 mm
Weight	approx. 250 kg

All rights for technical changes withheld. Individual machines shown could include options.

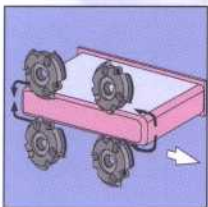


# Corner Rounding Machine FTF 200

## Softline furniture components demand solutions

The increasing share of "soft" edges in the furniture industry prompted the development of the stationary corner rounding machine FTF 200.

The machine ideally supplements the edge banding machines without form trimming units.

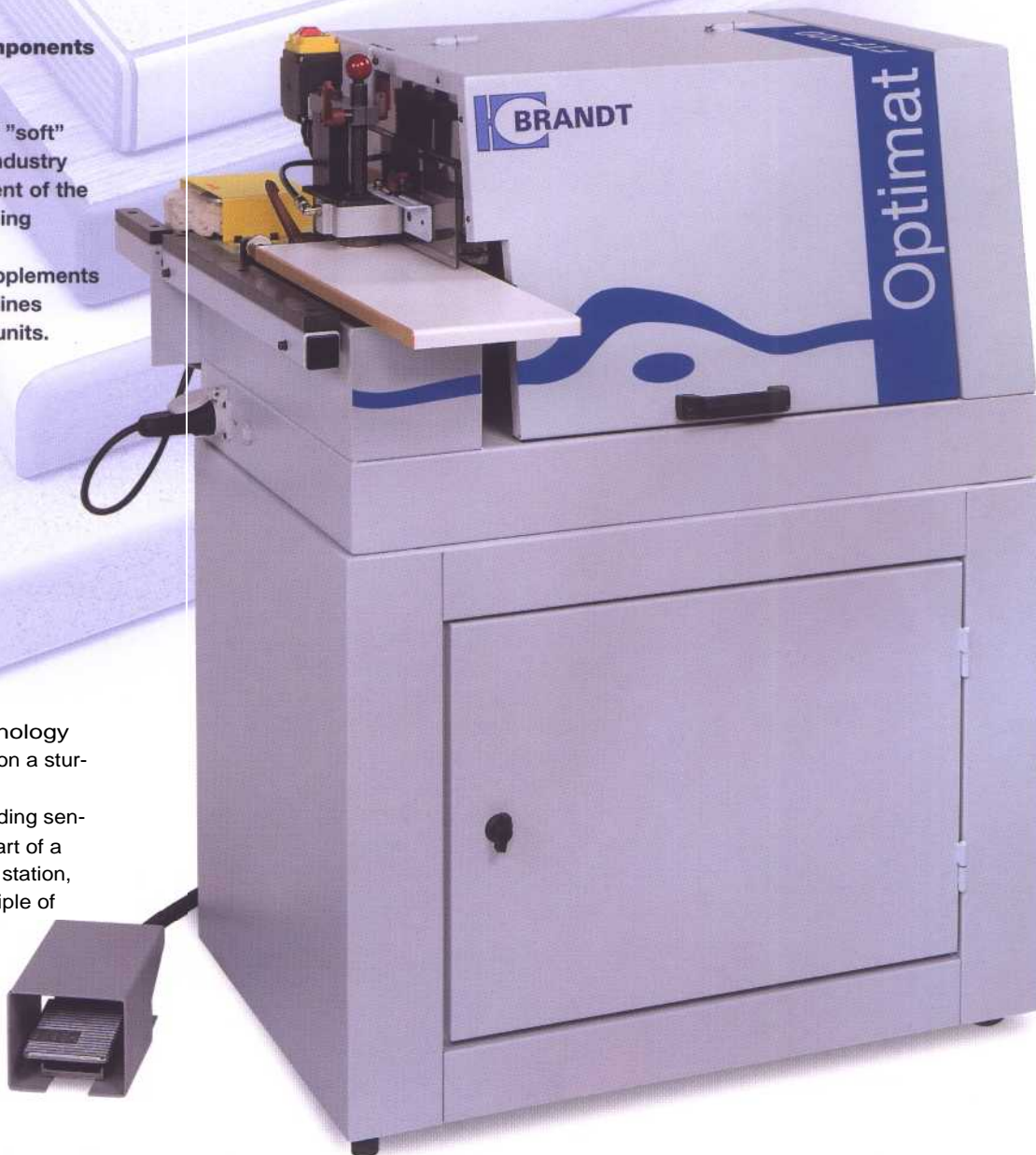


## Corner rounding technology

The workpiece is placed on a sturdy table and aligned.

The trimming motor including sensing roller and cutter is part of a new developed working station, which works on the principle of rotation.

A particular steady sequence of operations guarantees the best results.



### Technical Data

	Optimat FTF 200
Softforming profile depth	max. 20 mm
Workpiece width	min. 80 mm
Workpiece length	min. 150 mm
Workpiece thickness	12 - 40 mm
Edge thickness	max. 3 mm, depending on radius and edge material
Reversible radius cutter	r = 3 mm (chamfer cutter as optional equipment)
Electrics	230 V - 1 Ph. - 50/60 cycles
Pneumatic connection	6 bar
Dimensions LxWxH	910 x 800 x 520 mm, as a table machine, without table (option)
Dimensions LxWxH	910 x 800 x 1200 mm, incl. machine table VKNR 0022
Working height (with machine table)	920 mm
Weight	approx. 95 kg

All rights for technical changes withheld. Individual machine details shown may include options.



# It pays to be a Brandt customer



## **Brandt is present everywhere**

The well established service, marketing and agencies network means short distances for you and the closest possible vicinity to the customer - world wide.

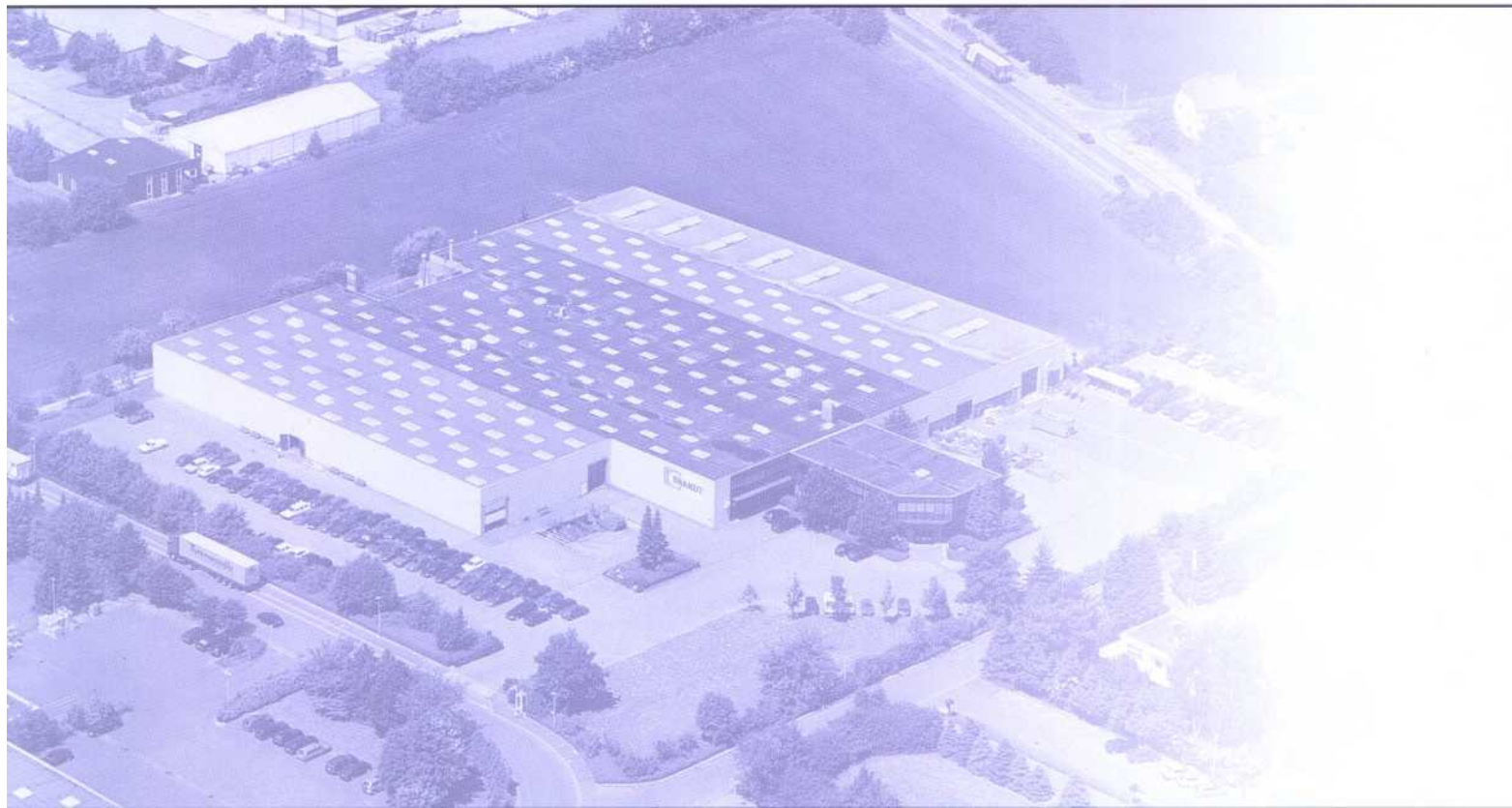
## **High degree of competence**

Constant training of the sales and service personnel of our marketing partners in the Brandt training centre guarantees optimal service competence.

## **Same parts, simple handling**

Many parts, control elements and subassemblies are identical for Homag Group machines and equipment. This makes operating them easier, simplifies the stock-keeping of spare parts and speeds up maintenance and service.





A member of the Homag Group of Companies



Brandt  
Kantentechnik GmbH  
WeststraBe 2  
D-32657 Lemgo  
Tel. 05261/974-0  
Fax 05261/6486  
[info@brandt.de](mailto:info@brandt.de)  
<http://www.brandt.de>

