



# Universal Edge Banding Machine Optimat KTD 72

High flexibility for  
straight workpieces  
and shaped parts



# Shaped parts and straight edges

## Optimat KTD 72 - the „one for all jobs“



### New Machine Concept

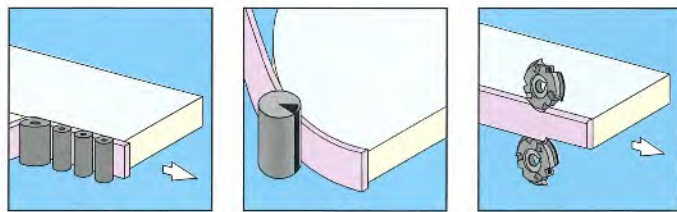
The KTD 72 is not only a new machine, it represents a flexible machine concept. The goal of the new development was to have a machine not only for efficiently and reliably gluing a series of formed parts but also for processing smaller quantities of straight parts.

### Flexible System

When processing formed parts, the glue is applied to the edge banding material. With straight-edged workpieces, the hot-melt as with larger machines - is applied to the edges of the workpiece. A support table that can be tilted through 45° allows for gluing beveled edges. When gluing internal radii, the downstream rollers can be quickly removed.

### Options:

- Automatic fixed-length magazine
- Additional heating for thick PVC edges
- Flush trimming unit for straight workpieces (integrated).



### It pays to be a Brandt customer

Brandt is the worldwide leader in edge processing in the carpentry sector. Brandt products are manufactured in series using the most modern CNC controlled machining centres. This Brandt standard can only be realised using the most up to date technologies.



### Brandt is present everywhere

The well established service, marketing and agencies network means short distances for you and the closest possible vicinity to the customer - worldwide. Our marketing partners and consultants know the market problems. They are from your trade and speak your language.



### Technical Data

Workpiece length  
Workpiece thickness  
Workpiece width  
Edge thickness

### Optimat KTD 72

min. 180 mm  
10 - 55 mm  
min. ca. 30 mm  
0,5 - 1,0 mm (with max. 60 mm edge height)  
0,5 - 3,0 mm (with max. 30 mm edge height)  
min. 25 mm plus edge thickness  
4 - 9 m/min.  
approx. 3 kW  
400 V - 3. Ph. - 50 Hz.  
6 bar  
850/910 mm  
1320 x 860 x 1200 mm  
approx. 500 kg

Internal radius  
Feed control  
Connected load  
Electrical connection  
Pneumatic connection  
Working height - adjustable  
Dimensions  
(without roll plate) LxWxH  
Weight



### Integrated Flush Trimming Unit

The above picture shows the available optional flush trimming unit for processing **straight edged workpieces**, installed in its designed location on the machine table. (Shaped parts can only be processed on the flush trimming machine F 13). The trimming motors run at 12.000 rpm and are driven by an electronic frequency changer and come standard with electronic motor braking. By installing a standard feed unit, straight workpieces can also be more efficiently processed.

### High degree of competence

Constant training of the sales and service personnel of our marketing partners in the Brandt training centre guarantees optimal service competence.

## DIN EN ISO 9001

### Excellent quality

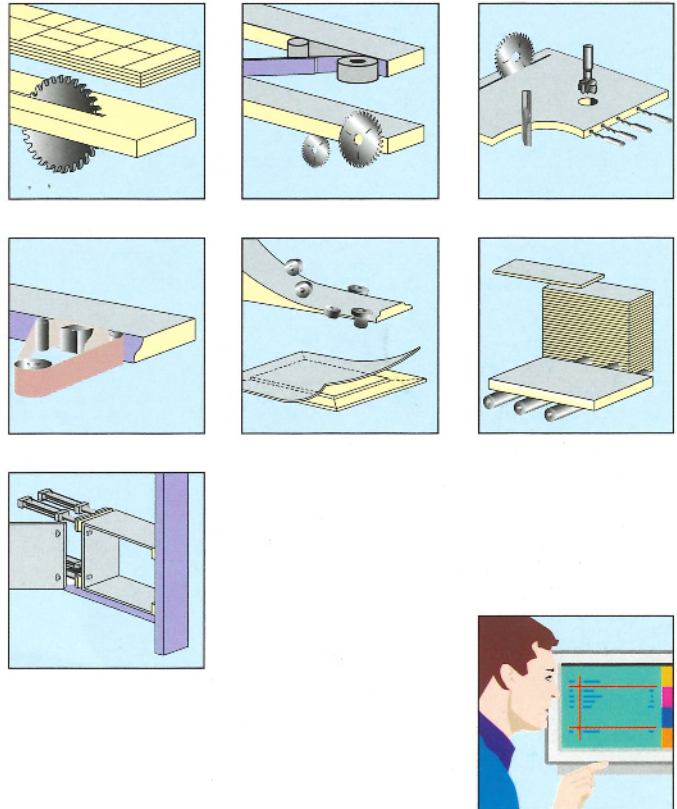
Production, service and marketing departments of the company are certified according to DIN EN ISO 9001 (TÜV CERT).







*Schuler & Partner*  
Unternehmensberater



Your supplier,  
our marketing partner:



**Heinrich Brandt**  
**Maschinenbau GmbH**  
Weststraße 2  
D-32657 Lemgo  
Tel. 052 61/60 09-0  
Fax 052 61/64 86

