

Shaped parts and straight edges

NKD 720 – the “one for all jobs“

The NKD 720 is not only a new machine, it represents a flexible machine concept. The goal of the new development was to have a machine not only for efficiently and reliably gluing a series of formed parts but also for processing smaller quantities of straight parts.

Direct glue application

The NKD 720 has a gluing system, which applies the glue directly on to the edge-banding material. The coil-cut off device is either activated by foot pedal or, for serial production, by pre-selecting the edge length via digital length counter

The panel is placed on height spacers, which are fixed on the working table, according to the shape of the panel. No template is required. Because of the flexibility of the NKD 720, shaped parts and straight parts can be processed easily on this machine.

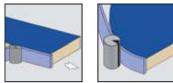


Digital pre-selection of edge lengths



Additional heating unit

To pre-heat thick PVC-edges.



Type of machine	NKD 720
Workpiece thickness	10 - 55 mm
Workpiece width	min. 30 mm
Edge length	min. 180 mm
Edge thickness	0,5 - 3 mm
Coil cut-off	0,5 - 1,0 mm (Edge height max. 60 mm)
Coil cut-off	1,0 - 3,0 mm (Edge height max. 30 mm)
Feed speed	variable 4,0 - 9,0 m/min
Working height	925 mm
Machine dimensions LxW	2078 mm x 1186 mm
Electrics	400 V – 3 Ph – 50 Hz
Pneumatic	6 bar
Weight	approx. 280 kg

