

**BISAGRADORA
SEMIAUTOMÁTICA**

R-2
**HINGING-MACHINE
SEMI-AUTOMATIC**



BASE RECTA / BASE PLATE



BASE AVIÓN / PLANE TYPE BASE



BISAGRA / HINGE



COLGADOR / HANGER



CLOK / CLOK

CARACTERÍSTICAS TÉCNICAS

TECHNICAL SPECIFICATIONS

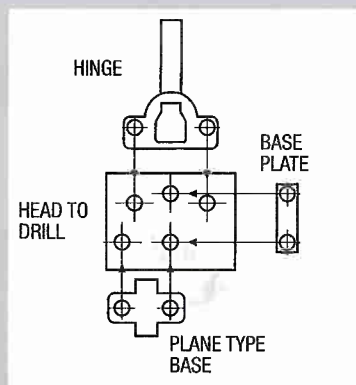
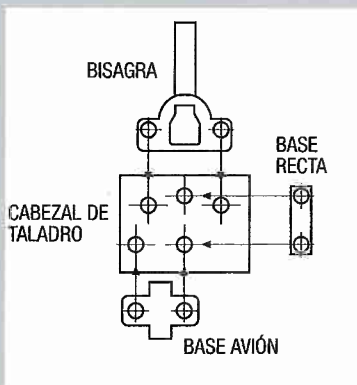
- CABEZAL INTERCAMBIABLE DE 5 PORTABROCAS.
- MOTOR EJE VERTICAL 1,5 Kw/3.000 R.P.M.
- PRESIÓN DE SERVICIO 6 Kg./cm².
- CONSUMO DE AIRE POR CICLO 3 L.
- MESA DE TRABAJO 1.000x385 (otras medidas).
- REGULADOR DE AVANCE EJE VERTICAL.
- PEDAL DE MARCHA.

- INTERCHANGEABLE HEAD TO DRILL WITH 5 DRILLBIT-HOLDERS.
- 1.5 Kw/3,000 R.P.M. ENGINE.
- WORK PRESSURE 6 Kg./cm².
- AIR CONSUMPTION FOR CYCLE 3 L.
- WORK TABLE 1,000x385.
- VERTICAL AXIS FEED REGULATOR.
- PNEUMATIC PEDAL.

DETALLE CABEZAL 5 PORTABROCAS

HEAD WITH 5 DRILLBIT-HOLDERS

CABEZAL DE 7 BROCAS CON POSICIONADOR
HEAD WITH 7 DRILLBIT-HOLDERS



BISAGRADORA SEMIAUTOMÁTICA R-2C

**HINGING-MACHINE
SEMI-AUTOMATIC**



BASE RECTA / BASE PLATE



BASE AVIÓN / PLANE TYPE BASE



BISAGRA / HINGE



COLGADOR / HANGER

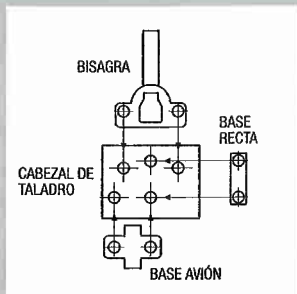


CLOK / CLOK

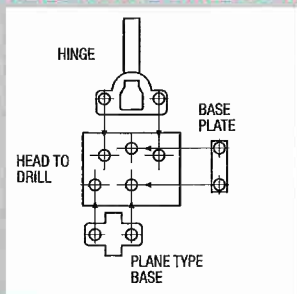
**CABEZAL DE 7 BROCAS CON POSICIONADOR
HEAD WITH 7 DRILLBIT-HOLDERS**



DETALLE CABEZAL 5 PORTABROCAS



HEAD WITH 5 DRILLBIT-HOLDERS



CARACTERÍSTICAS TÉCNICAS

- CABEZAL INTERCAMBIABLE DE 5 PORTABROCAS.
- MOTOR EJE VERTICAL 1,5 Kw/3.000 R.P.M.
- PRESIÓN DE SERVICIO 6 Kg./cm².
- CONSUMO DE AIRE POR CICLO 3 L.
- MESA DE TRABAJO 1.000x385 (otras medidas).
- GRUPO DE FILTRAJE.
- REGULADOR DE AVANCE EJE VERTICAL.
- PEDAL DE MARCHA.

TECHNICAL SPECIFICATIONS

- INTERCHANGEABLE HEAD TO DRILL OF 5 DRILLBIT-HOLDERS.
- 1.5 Kw/3,000 R.P.M. ENGINE OF VERTICAL SHAFT.
- WORKING PRESSURE 6 Kg./cm².
- AIR CONSUMPTION FOR CYCLE 3 L.
- WORK TABLE 1,000x385 (other dimensions available).
- AIR FILTER SET.
- FEED REGULATOR TO DRILL.
- PNEUMATIC PEDAL.