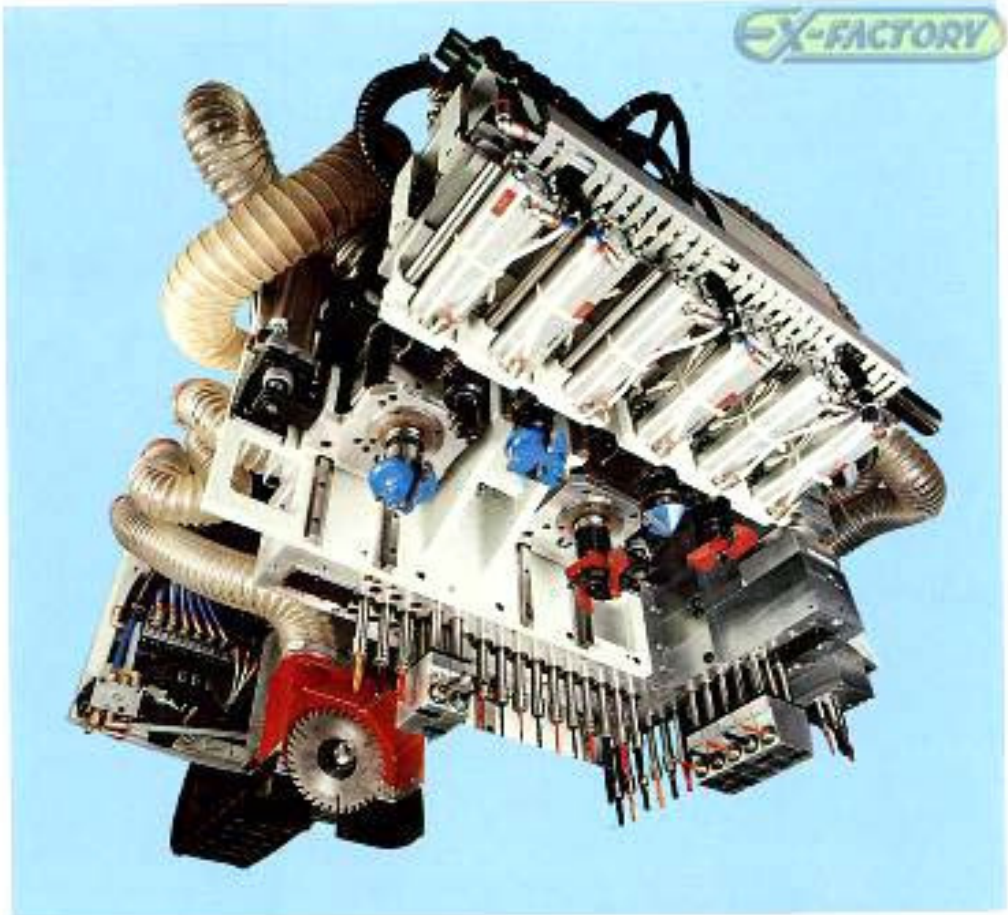


FACTORY

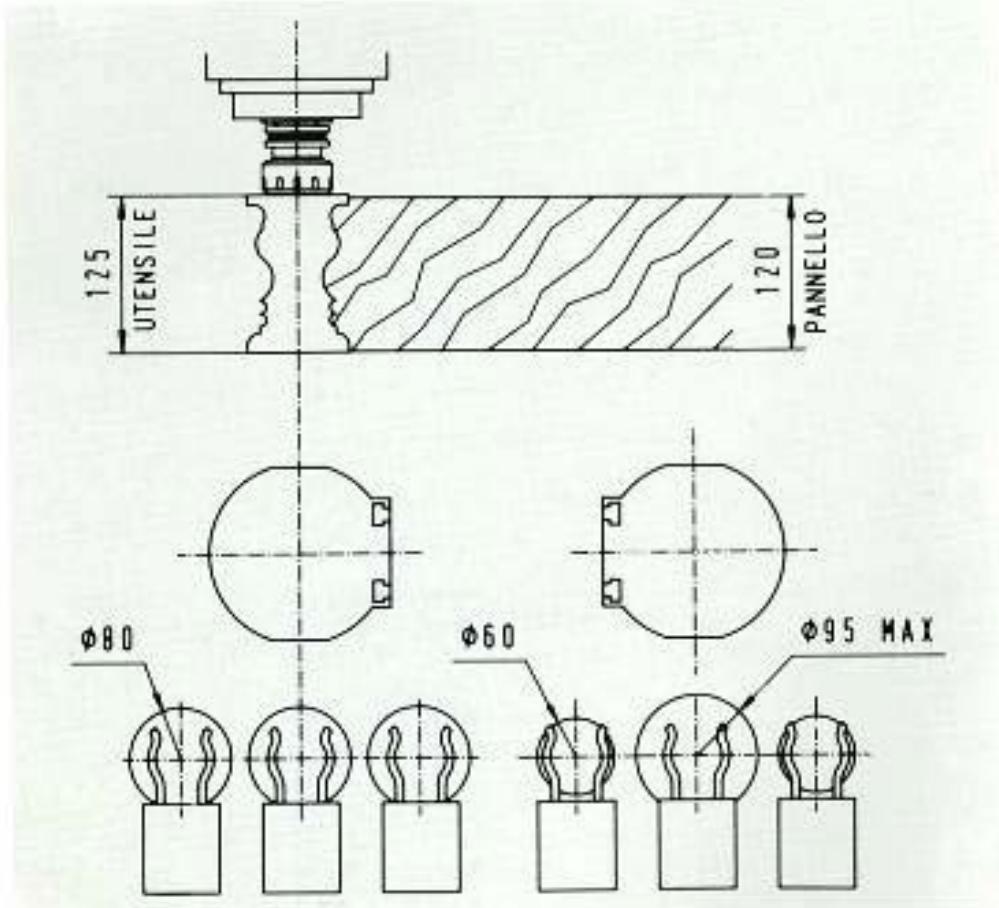
MULTIPURPOSE WORKING CENTER SUPERJUNIOR 120 WITH OR WITHOUT AUTOMATIC TOOL CHANGER



Automatic Tool Changer (patented) equipped with two electrospindles and tool rack with 6 tools for the automatic changing of tool during the working cycle.



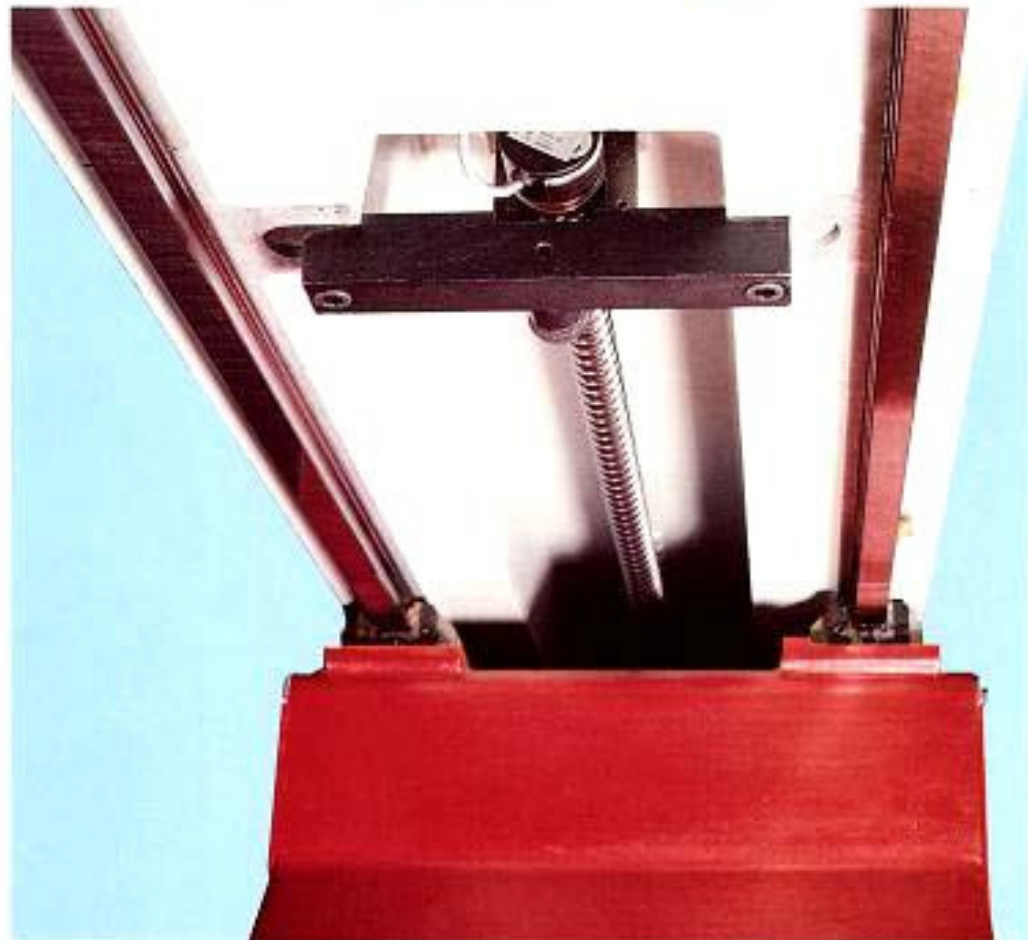
Drawing of the tool rack and electrospindles showing max. tool diameter.



Square rails on the "X" axis, circulating ball nut and lead screw.



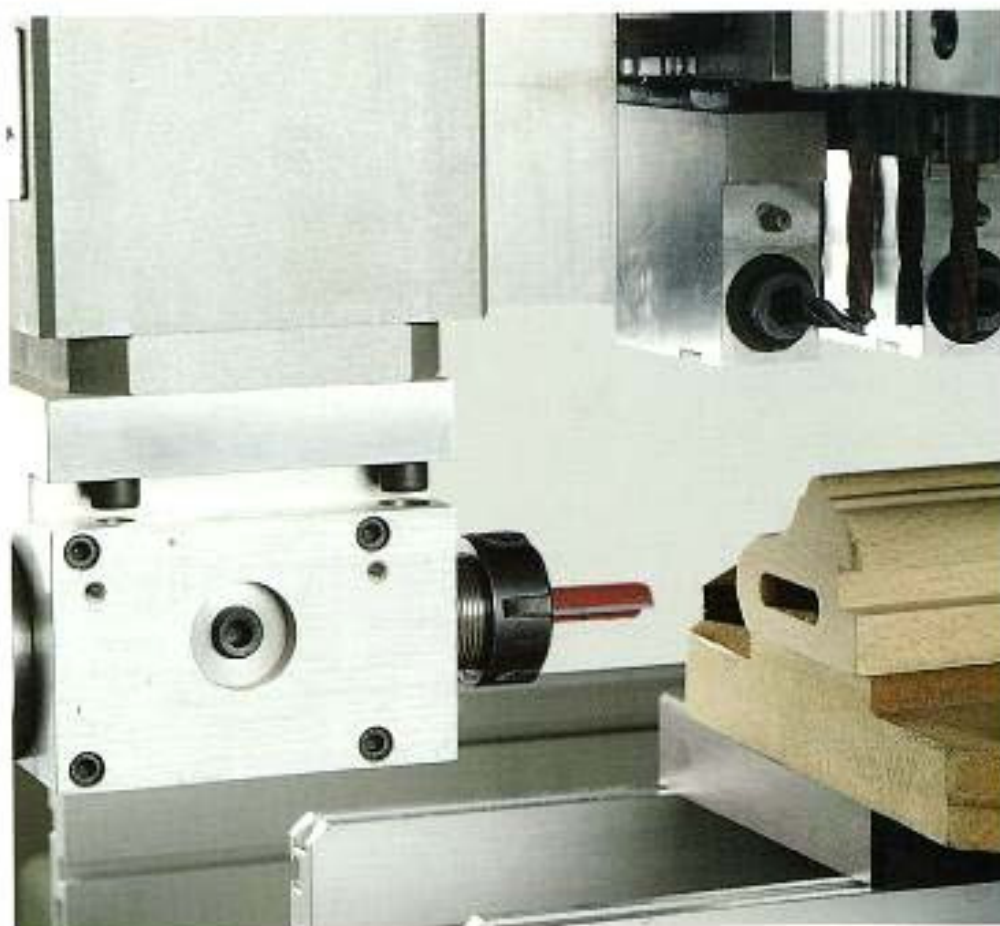
Square rails on the "Y" axis, circulating ball nut and lead screw.



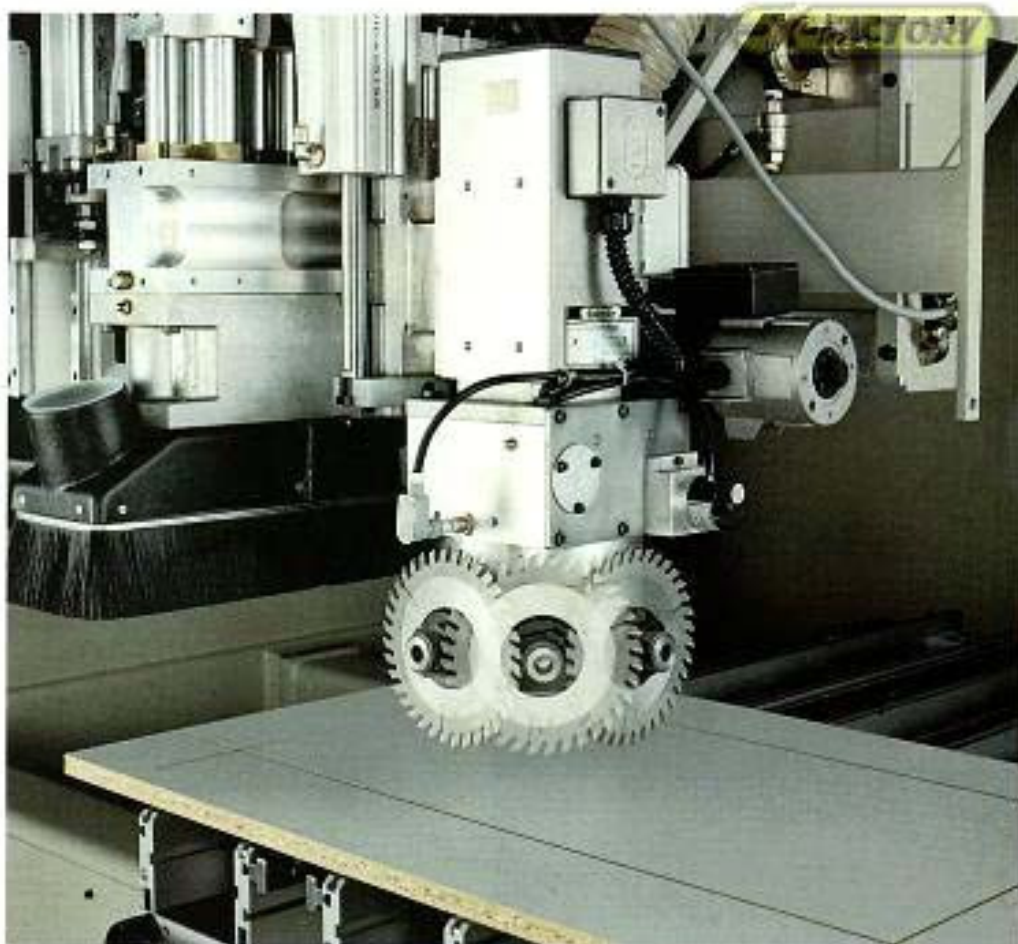
Horizontal router 7.5 / 9.5 Hp.



Horizontal router with one outlet, motor vertically positioned.

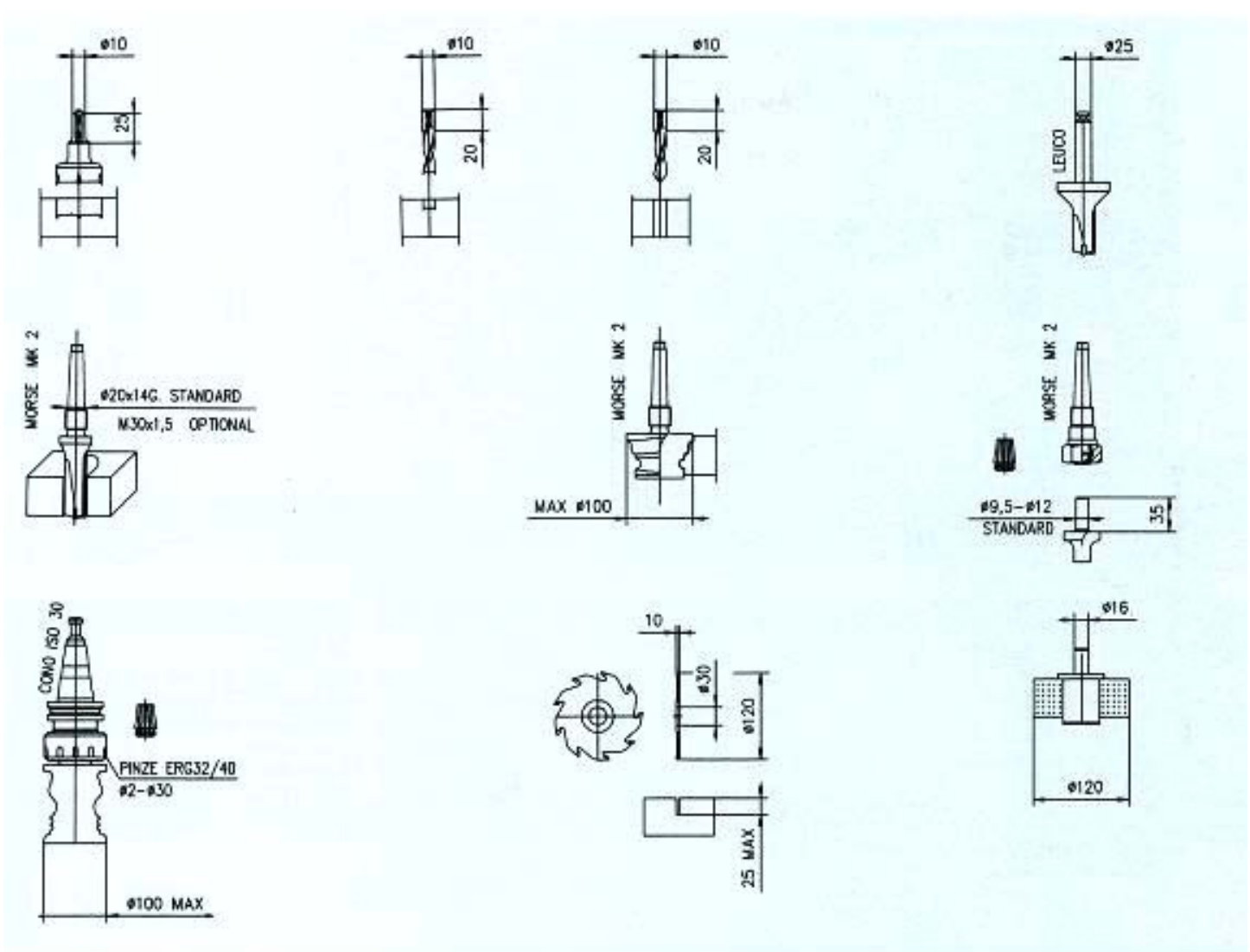


0-360° rotating unit capable of fitting a saw blade or a horizontal router, programmable from the control unit and suitable for trim cutting, grooving, profiling, horizontal routing and boring.



Horizontal router with two outlets, motor vertically positioned with 0°-90° rotation of the routing head.





EXAMPLES OF WORKING FIELDS

