

# PRISMA6000

## TRULY MATCHLESS AND AMAZING!

### HEAD OFFICE

**GIBEN TECH** s.r.l

40065 PIANORO - BOLOGNA - ITALIA

Ph. +39-0516516400 Fax +39-0516516425

E-mail: info@giben.it

www.giben.it

### IN THE WORLD

Giben Australia

Giben Guangzhou Machinery

Giben de España

Tens of dealers all over the world.

**www.giben.it**

*PRISMA6000 by Giben introduces the synthesis of 65 years experience in panel sizing.*

**The "TOP OF THE RANGE" with a cutting capacity up to 185 mm.**

*PRISMA6000 is the outcome of a design which applies revolutionary technical solutions allowing to enhance your productivity and creativity.*

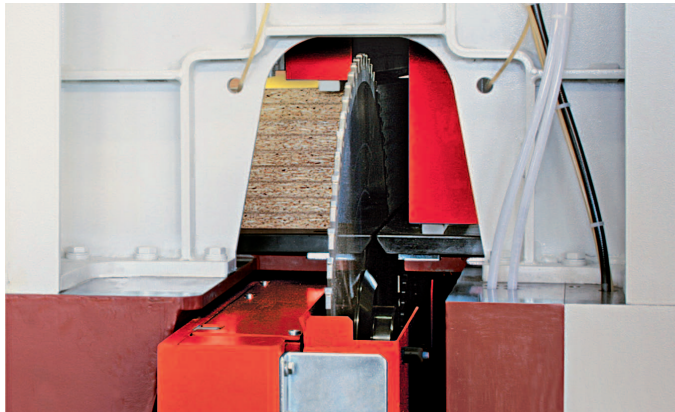


**Look at the machine in operation to understand how really amazing it is.** It is the winner of the Challenger Award in Atlanta as best innovation in panel sizing on worldwide scale. A panel saw totally re-conceived **born by a cooperation with the Polytechnic Institute in Milan on the application of linear motors and KERS (kinetic energy recovery system).** Linear motors for both saw carriage and pusher strokes allow the attainment of unexpected speeds and a saw carriage acceleration equal to "1g", this results in 15 cross cuts in a minute rather than 5 or 6 standard cuts.

# INNOVATION AT AFFORDABLE COSTS

Either applying the linear motor technology or the known transmission systems, the range 6000 takes advantage from exceptional mechanical and structural performances, such as a maximum saw blade projection of 185 mm (saw blade projections of 115-130-150 mm. also available), main saw motor 37 kW, the brand-new saw carriage raising and lowering system (no longer pneumatic) and other important options such as the totally new system for the protection of the board surface conceived by Giben (not air flotation), when it slides on the cutting table nearby the cutting line.

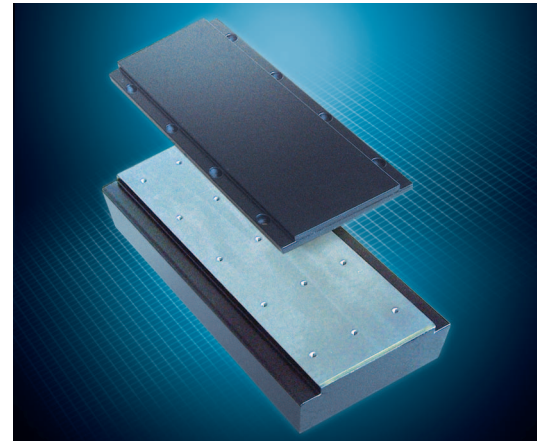
Its cost? .. quite affordable!



Option: **ECOTECH**  
version with linear  
motor on saw  
carriage, kers,  
vectorial motor for  
main saw blade  
raising and PC  
controlled lubrication.

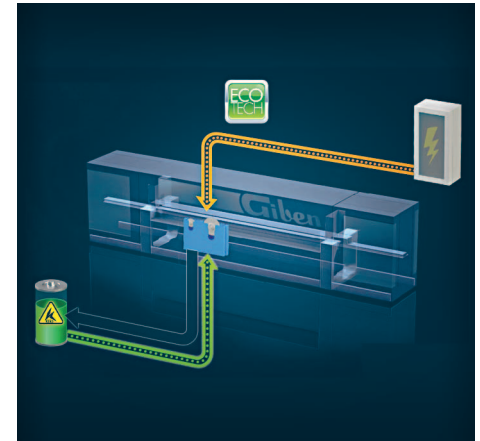
## LINEAR MOTORS AND KERS

**Performances never reached before, no maintenance required as all the movements are carried out on magnet tracks.** The range 6000 does not suit only those concerns requiring very high productions, it also fits the "job order 1" which need truly high speeds. It is also available with either a saw blade projection of 115 mm. and 130 mm. for processing of low stacks at high speed, or a saw blade projection of 150/185 mm for processing high volumes always with accelerations and speeds as it is in the F1. *The speed/acceleration reaches almost "1g" and this makes PRISMA6000 a simply amazing machine.*



**LINEAR DRIVE**  
The supreme power of linear motor technology  
(patent pending).

Higher accuracy, productivity and dynamics.  
Greater availability of the machine, movements  
free from wear and tear, no maintenance.  
Drop in noise pollution.



**KERS**  
System recovering the kinetic energy wasted  
by the saw-carriage (patent pending).

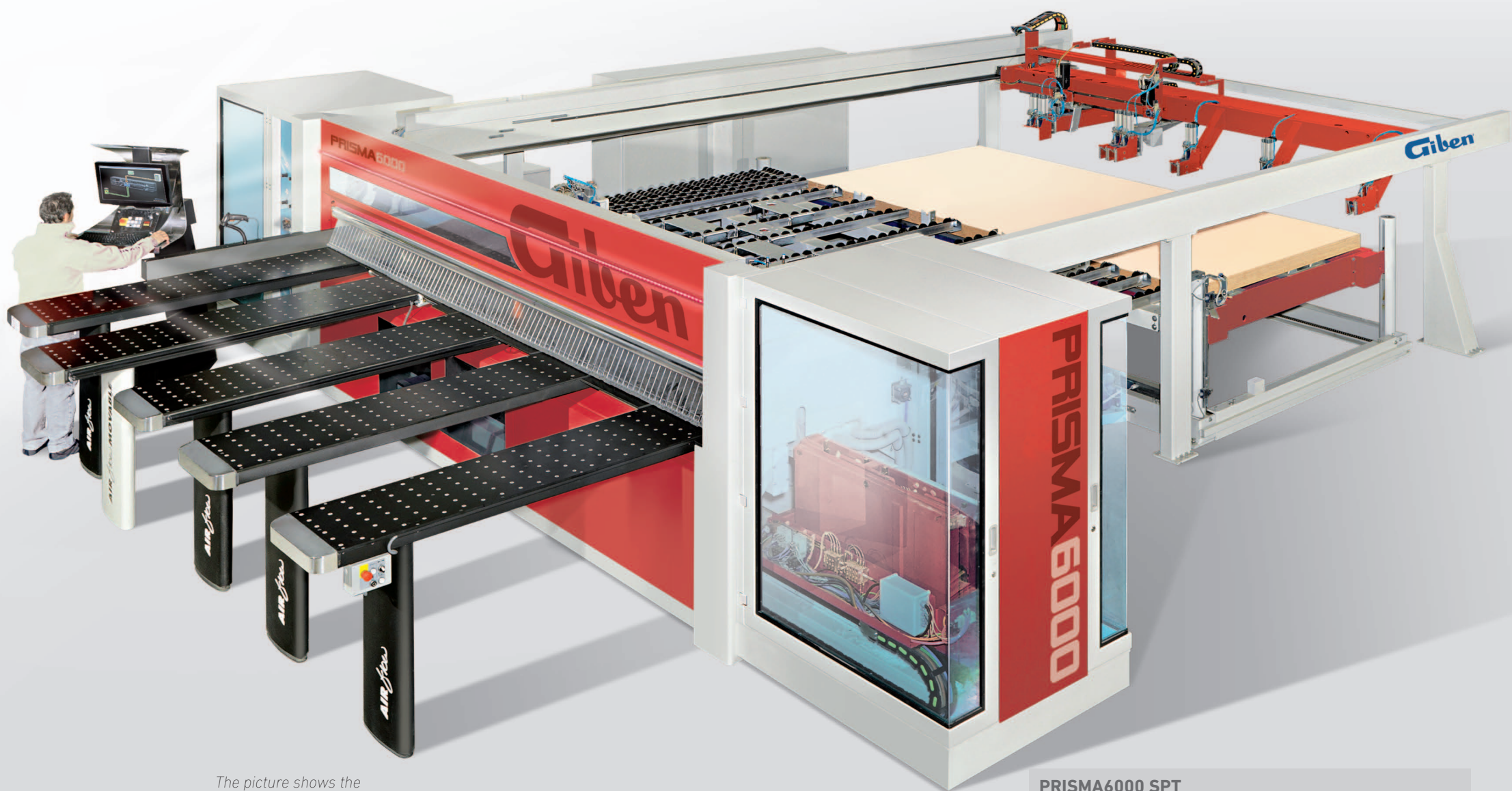
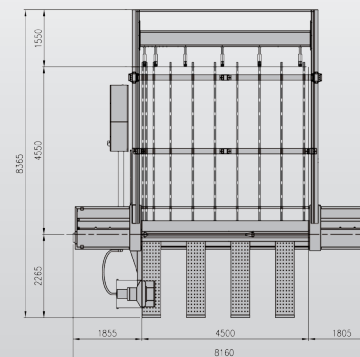
Giben®

# SERIE 6000

## A FULL RANGE

Many models, including the tailored single line panel saws and the angular cutting centres. Carrying on the tradition but offering a more updated mechanics and performances.

PRISMA6000 SP



The picture shows the TOP of the range, the model **PRISMA6000 SPT** with air flotation tables.

PRISMA6000 SPT

