

Giben®

PRISMAEVO

NEW... UNEXCELLED QUALITY!

HEAD OFFICE

GIBEN TECH s.r.l

40065 PIANORO - BOLOGNA - ITALIA

Ph. +39-0516516400 Fax +39-0516516425

E-mail: info@giben.it

www.giben.it

IN THE WORLD

Giben Australia

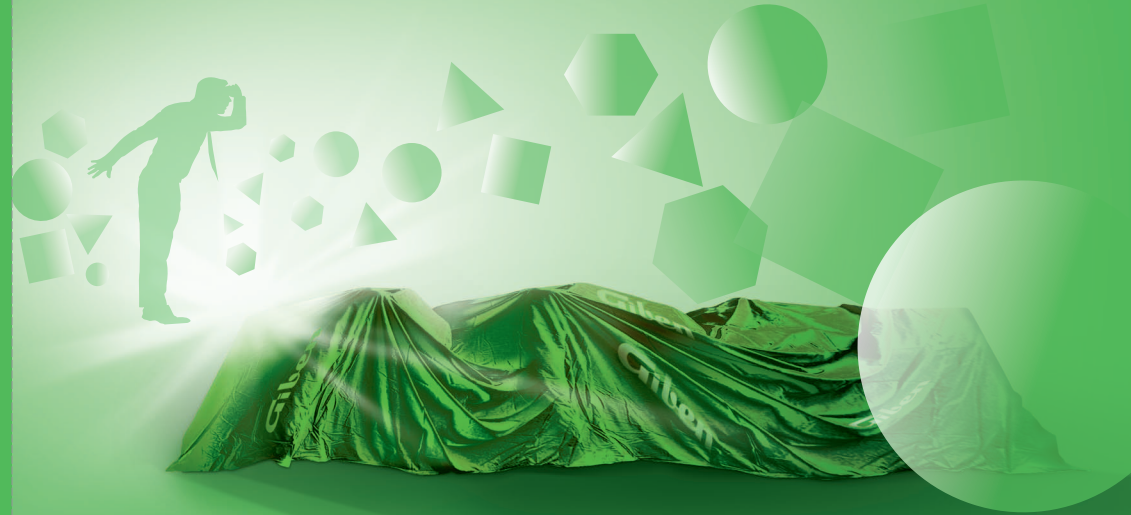
Giben Guangzhou Machinery

Giben de España

Tens of dealers all over
the world.

www.giben.it

PRISMAEVO
by **Giben** introduces
the synthesis
of 65 years experience
in panel sizing.
**The only panel saw in the
world without motors on
the saw carriage.**



Improving excellence is hard, but PRISMAEVO is really two steps ahead compared to panel saws offered by any other competitor, it is unexcelled. We have been working on the geometry of the product with new ideas and new materials. **The ECOTECH version (option) is at the least amazing!** Linear motor for saw carriage traverse, acceleration close to "1g", nominal speed exceeding 200 m/min, noiseless, no vibration, no mechanical wear and tear, nothing at all.

NO MOTOR ON THE SAW CARRIAGE

Giben has made the new PRISMAEVO still more revolutionary, as it is the only panel saw in the world without motors on the saw carriage.

Winner of international awards on innovation, this system allows truly exceptional accelerations.

No vibration affecting the blade, no power cable in motion (no breaking in the time).

*Saw carriage with brushless motor.
Speed **160 m/min.** (200 m/min. in the
Ecotech version).*

G-DRIVE^Q



G-DRIVE^Q
**Machine control software with real-time
graphic simulation.**

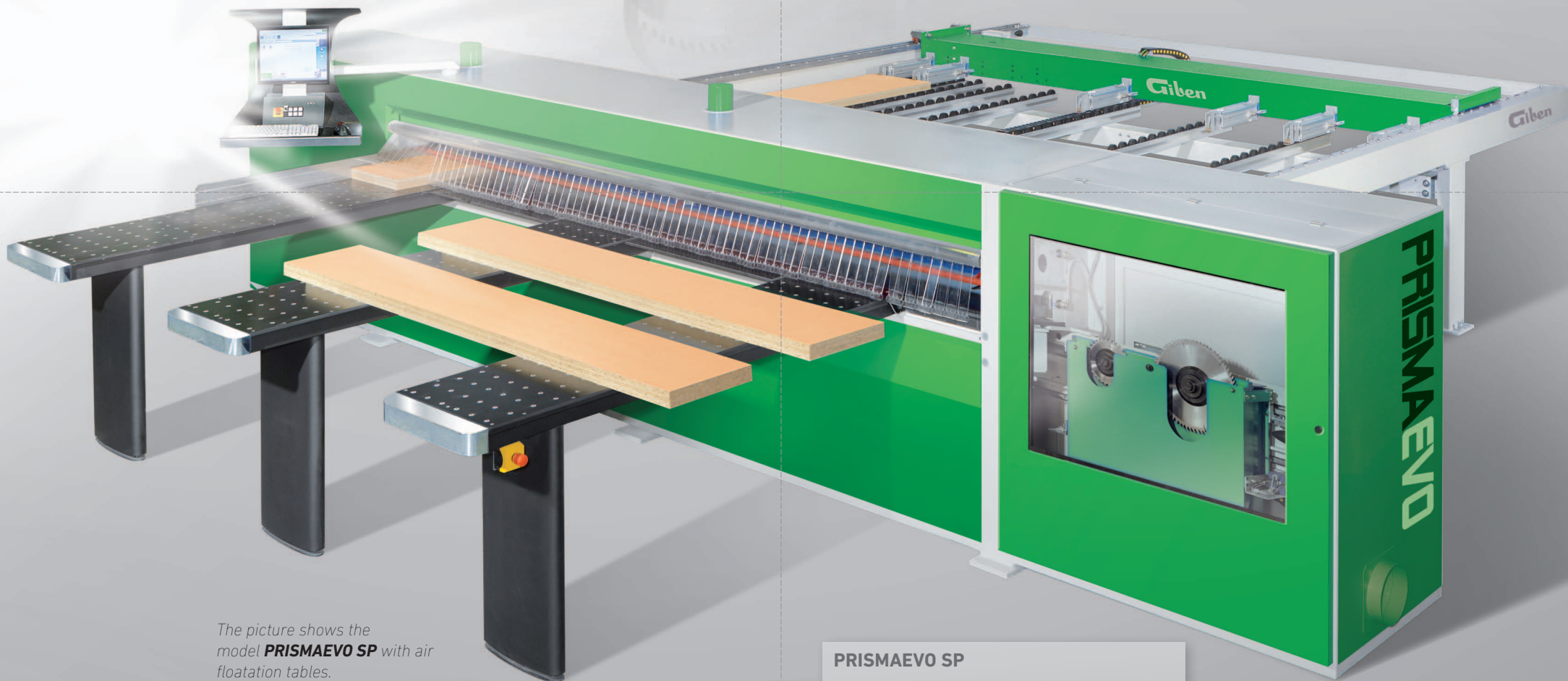
Developed by Giben to work with multi-tasking
operating system Microsoft™ Windows™.

PRISMAEVO A FULL RANGE

Two models among the many available.

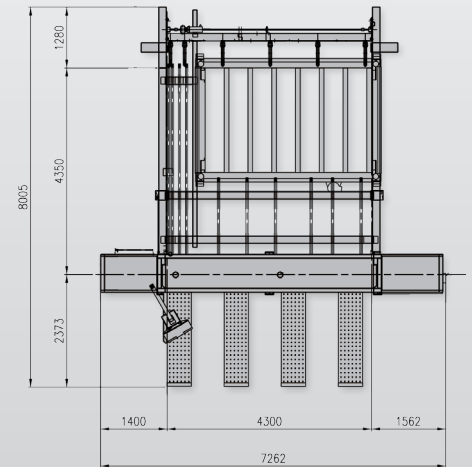
The **PRISMAEVO SP** shown by the picture can be equipped with either brushless or linear motors on the saw carriage.

The **PRISMAEVO SPTⁱ** shown in the layout offers direct loading on the lift table while keeping the same size of the model SP.



The picture shows the model **PRISMAEVO SP** with air floatation tables.

PRISMAEVO SPTⁱ



PRISMAEVO SP

