

Model BEU

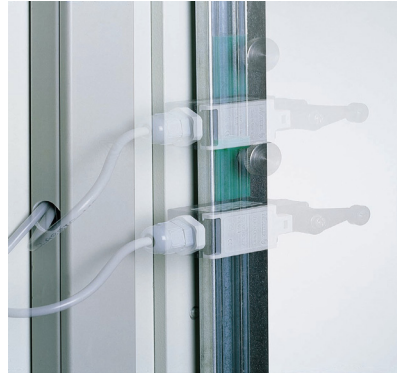


- Golden anodized heating platens
- Dynamic piston bearing
- Heavy hydraulic aggregate
- Joos-A.B.S.-Safety-System
- Variable hoist limiting

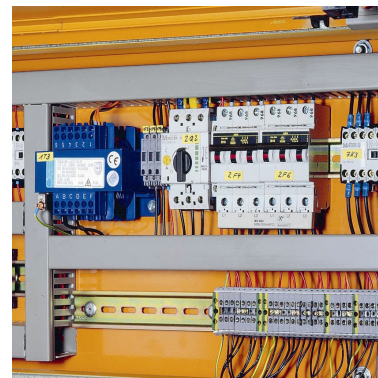
■ The four models of this type distinguish themselves by the technical equipment as well as the price that meet the customers' basic demands.

■ As almost all Joos-Presses, also this model is offered with electric as well as fluid medium heating platens. Following modes of heating are available.

- Electric heating platens up to 90°C
- Water heating platens up to 85°C including temperature regulator device with 18 kW heating output
- Thermic oil heating platens up to 120°C including temperature regulator device with 18 kW heating output



■ The opening of the press is easily adjusted by the **variable hoist limiting**. The hoist limiting is mechanically adjusted at the guide rail.



■ An exact control of the commands is the prerequisite for smooth veneering. Therefore, Joos-Quality-Products are only provided with proofed components.



■ ■ ■ Technical details and dimensions of serial machines - other dimensions on request

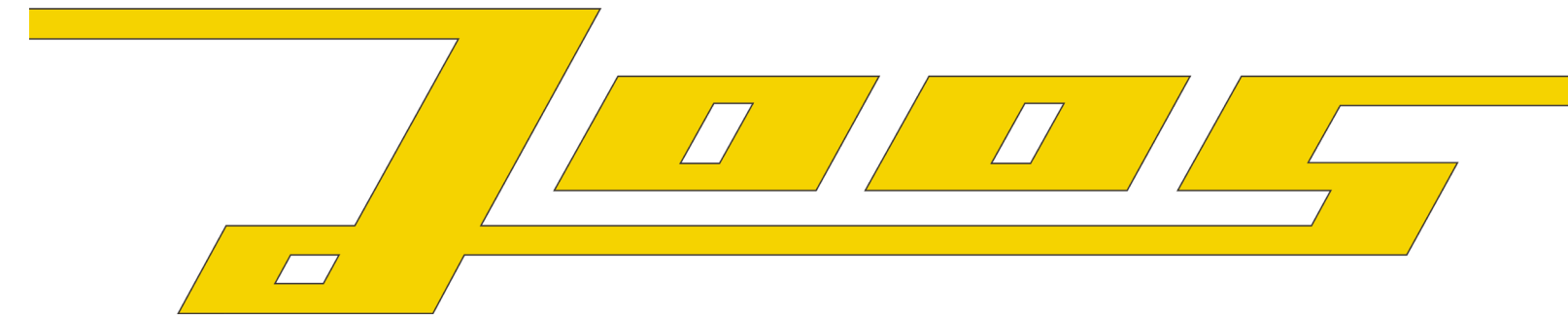
Model HP	HP 45	HP 65/1	HP 65/2	HP 90	HP 120	HP 120/1	HP 150	HP 150/1
Pressing surface [mm]	1800x900	2200x1100	2500x1100	2550x1350	3100x1300	3100x1600	3100x1300	3100x1600
Pressure [kN]	450	650	650	900	1200	1200	1500	1500
Opening [mm]	400	400	400	400	400	400	400	400
Specific pressing power [kg/cm ²]	2,8	2,7	2,4	2,7	3,0	2,4	3,7	3,0
Number of cylinders	4x80 mm	4x80 mm	4x80 mm	4x90 mm	6x80 mm	6x80 mm	6x90 mm	6x90 mm
Operating pressure [bar]	225	325	325	355	398	398	393	393
Heating								
Elec. heating platens [°C]	120	120	120	120	120	120	120	120
Connected load with two elec. heating platens [kW]	11,7	14,3	16,7	21,1	27,6	31,4	27,6	31,4
Heating								
Medium heat. platens [°C]	85 / 130	85 / 130	85 / 130	85 / 130	85 / 130	85 / 130	85 / 130	85 / 130
Weight approx. [kg]	2200	2350	2750	3100	4350	4800	5300	5650
Dimensions approx.								
Length [mm]	2200	2600	2900	2950	3600	3600	3600	3600
Width [mm]	1100	1300	1300	1600	1550	1850	1550	1850
Height [mm]	1950	1970	2080	2220	2250	2300	2300	2350

Model BEU	BEU 65	BEU 70	BEU 80	BEU 90
Pressing surface [mm]	2500x1100	2500x1250	3100x1300	3100x1600
Pressure [kN]	650	700	800	900
Opening [mm]	400	400	400	400
Specific pressing power [kg/cm ²]	2,4	2,2	2,0	1,8
Number of cylinders	4x80 mm	4x80 mm	6x80 mm	6x80 mm
Operating pressure [bar]	325	350	265	298
Heating				
Elec. heating platens [°C]	90	90	90	90
Connected load with two elec. heating platens [kW]	16,7	18,9	27,6	31,4
Heating				
Medium heat. platens [°C]	85 / 120	85 / 120	85 / 120	85 / 120
Weight approx. [kg]	2750	2850	4300	4500
Dimensions approx.				
Length [mm]	2900	2900	3600	3600
Width [mm]	1300	1470	1550	1850
Height [mm]	2000	2000	2100	2150

Gottfried Joos Maschinenfabrik GmbH & Co. KG
 Lange Strasse 41/ Gottfried-Joos-Strasse
 D-72285 Pfalzgrafenweiler
 Tel.: +49 (0) 7445 1840
 Fax: +49 (0) 7445 18450
 Mail: info@joos.de
 www.joos.de

Joos Nord
 Ron van Dam
 Postbus 128
 4650 AC Steenbergen
 NIEDERLANDE
 Tel.: +49 (0) 7445 18485
 Mail: ron.vandam@joos.de
 www.joos.de

Joos USA INC.
 680 Madison Avenue
 Manalapan, N.J. 07726
 USA
 Tel.: +1-732 786 0490
 Fax: +1-732 786 0491
 Mail: info@joosusa.com
 www.joosusa.com



Quality-Press
 HP / BEU



Joos-Quality-Press HP

- Joos-Quality makes the difference



There are many manufacturers for presses but only a few that produces good presses. Company Joos, one of the first manufacturers of hydraulic veneer presses for craftsmen, remains true to its principles to build only machines that meet the highest demands on quality. Joos products fulfil these standards in the production of presses by

- the quality in processing
- the reliability
- the long life
- the high ease of operation
- a matured technique
- experience in press building for over 80 years
- decades of know-how

When it is about presses it comes to Joos. Convince yourself of the features of good mechanical engineering and ask for solutions by Joos.

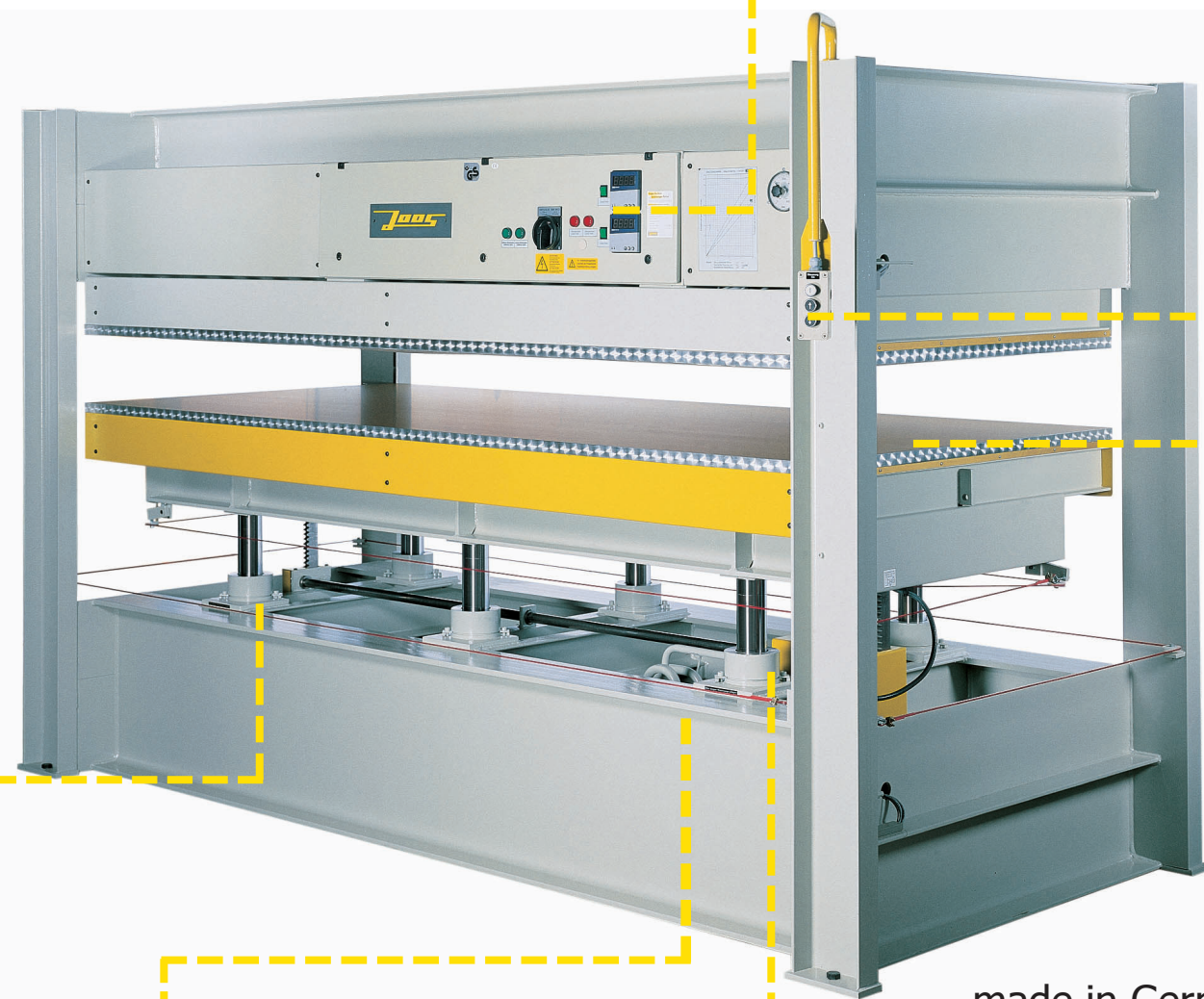
The dynamic piston bearing

In this unique Joos design the pressing table bears dynamically on the pistons without any screw connections. The table is guided by a column guide. A precision toothed rack parallel guide system ensures the synchronism. This technique provides the pressing table with a full range for expansion in all directions.



The hydraulic unit

Motor, valves and high-pressure pump are maintenance-free and mounted securely in the bottom part of the press. We make the same demands to our suppliers as to ourselves - only the best quality is good enough.



... made in Germany

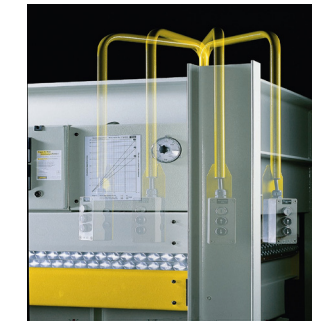
Temperature control

The standard temperature control is effected by means of a thermostat in the border area of the heating platen. The better solution is the electronic temperature control R 3.1 by Joos in which an electronic control, that is positioned in the centre of the heating platen, controls the temperature. Additional to this the heating platen is protected against overheating by a safety thermostat that is positioned in the border area.

Operation of the press

Joos-Quality-Presses of the model HP are equipped with a swivelling control box. Then the operator can always have an eye on the pressing material even from the long or small side of the press. This is a further idea by Joos for increasing the operating safety.

A **Touchpanel with SP-control** as central interface for operating the press is available as an option. All important pressing parameters such as pressure, pressing time, etc. as well as the dimensions of the parts can be set here.



Heating platens

Independent of the mode of heating, Joos-Quality-Presses are equipped with golden anodized heating platens as standard. Therefore the heating platens are extremely resistant to scratches and abrasion.

The significant advantages are: no scoring, reduced consumption of separating agent, no wear and tear on foil and a higher quality veneering.



All HP models can be equipped with additional daylight heating platens for **capacity extension**.

On request, the Joos-Quality-Press will be prepared so that a later extension is possible at low extra costs.



Joos-A.B.S.-Safety-System

This system protects the heating platens, the machine and the material. Incorrectly loaded or forgotten parts are registered immediately by micro sensors and the press opens automatically. Due to this Joos invention the life and operating safety of your Joos-Quality-Press will be decisively increased.



Innovative from tradition!

Modes of heating

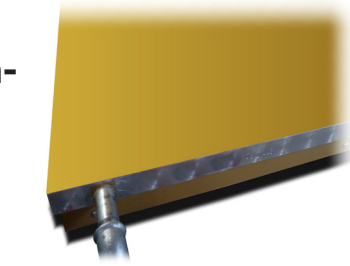
Electric-heating platens



The classic electric heating by means of resistance wire

- Temperature up to 120°C; higher temperatures on request
- Short heating-up time
- Low investment costs
- Simple handling

Medium-heating platens



Sandwich construction. Meander shaped heat control system made out of compression-proof and corrosion-free tubing. Water is mainly used as heat transfer medium (thermo oil as alternative).

- Temperature up to 130°C; higher temperatures on request
- Ideal temperature distribution on the heating platen
- Fast amortization when intensily used
- Continuous temperature compensation
- High energy savings capacity

Energy optimisation with medium heating

The temperature is set at the heating platen control. The in-house hot water is used as long as its temperature is high enough. As soon as a higher temperature of the water is required the press switches over to the external temperature regulator devices.

Permanent temperature constancy with minimum energy consumption!



- Water temperature regulator device for temperatures up to 130°C
- HP 120 water heated up to 85°C with temperature regulator devices installed on top of the press

