

uPower series

Leadership Through Performance and Reliability

LMC
LEADERMAC

Quality Features Add More Value to Your Production



How **Leadermac uPower Moulder** provides users with significantly lower operating costs, greater productivity and better cutting quality.

Leadermac's new U-Power Series 4 Side Moulder is a fast tool change moulder, integrating many outstanding features into one machine. That makes the U-Power such a great value.

Designed and built for high quality and high efficiency production work, the U-Power provides a high feed rate of 36m/min. A high speed HSK80F spindle is also available upon request. This amazing machine creates a superior surface finish that eliminates the need for sanding on planed and profiled surfaces. Digital readouts on all axes allow for convenient and accurate adjustments to be made to the spindle. A user-friendly controller makes the machine easier to operate.



LMC LEADERMAC

LMC LEADERMAC uPOWER 623



LEADERMAC

uPower series

Leadermac **uPower** series

Outdoing the competition with easier operation and faster tool changes



6000, 8000, or 10,000 rpm High Speed HSK Spindle (optional)

» Choice of 6000, 8000 or 10,000 rpm HSK80F Spindle.

» The advanced HSK80F Spindle provides a dramatic increase in machining efficiency and cutting surface finishing.

» Tool changes can be accomplished quickly.

Outdoing the Competition....

- Easier operations
- Faster Tool Changes

Profiled Cutterhead

The HSK Spindle is mounted with a profiled cutterhead.

Air Blast for cleaning spindle

A powerful air blast actuates to clean the spindle taper before the tool holder is clamped. This results in high circularity accuracy of the tool holder and cutting tool.

Tool Holder Lock / Unlock

The tool holder is locked or unlocked by simply pressing a switch. This optional feature saves considerable time during tool changes.

Straight Cutterhead

The HSK Spindle is mounted with a straight cutterhead.



Quality Features Add More Value to Your Production

Leadership Through Performance and Reliability



LEADERMAC's wide variety of 4-side moulders have all the very latest technology for increased productivity, product quality & reliability. These Heavy Duty Moulders are designed to provide fast cutting speeds and highest quality & accuracy. These machines are precision manufactured by our highly skilled technicians - plus Leadermac service, training, and moulding know-how is offered with each moulder. No matter what your moulding jobs call for, there is a Leadermac 4-side moulder that's right for you.



uPower series

Smartset Standard & Smartset Advanced

Touch Screen Control (optional)

- * Automated Machine Quick Setup
- * Easy & Powerful Functionality
- * History & Library of Information
- * Pattern / Profile Memory of 500 or 1000 patterns
- * All Axes outfitted with Ball Screws & Rotary Encoder Position Feedback For Best Set Control; hence better Cut Quality
- * Setworks on any axis as desired
- * Download from the Grinding room Measuring Stand to PC to Upload to SmartSet Control available



PROGRAMMABLE CONTROLLER

The width and thickness setting can be easily adjusted using the programmable controller. The desired values for width and thickness can be conveniently pre-set and are displayed on an LED Readout. The feed speed is VFD inverter controlled with LED Readout.

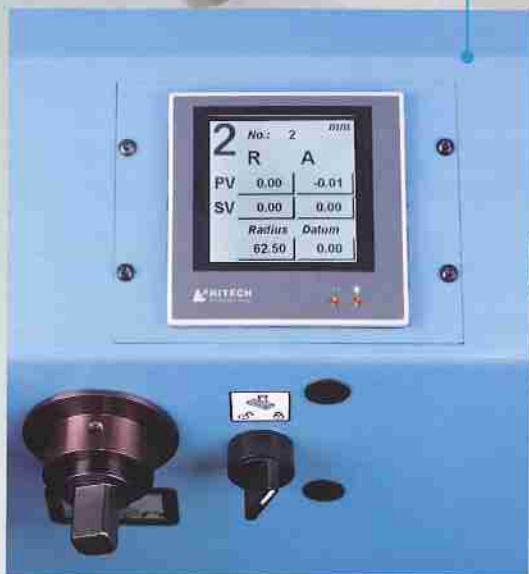


World Class Moulding Solutions

OUTSTANDING FEATURES:

- » Feed Speeds of up to 36 mpm(120fpm) are standard (higher-optional)
- » Std. Programmable REC Auto. Setworks Controllers provide quick & convenient Setup for Near Side Head(s) & Top Head(s) as well as other Axis are optional.
- » Adjustment of each spindle can be easily performed using the front of the machine adjustment setup and displayed by LED digital readout.
- » The full Heavy Gauge Steel Sound Insulated Safety Enclosure serves as a chip guard and helps reduce noise, and has strobe free lighting.
- » Each spindle is driven by an individual motor for powerful milling and easy control.
- » Pneumatic pressure of the feed rollers can be easily set to provide an outstanding feeding effect – 3 sections – each with individual Adjustment – ie. Infeed, Midfeed & Outfeed Top Rolls. Pressure Controls & Pressure Gauges mounted on outside of the enclosure post.
- » Table Surfaces, Guides, Chip Breakers & Pressure Plates are hard-chrome plated for maximum wear resistance.
- » All manually adjusted turning parts are housed in dry bearings for oil-free lubrication.
- » Automatic lubricator is provided to supply oil to the table sections for running parts.
- » Extra Heavy One-piece, Cast Iron or steel weldment Machine Frame is specially heat treated for maximum stability and rigidity by standard configuration.
- » Digital readouts for the Chip Breaker Shoes of top spindle(s).
- » Split Sectional Chip Breaker Ass'y in front of top spindle(s).
- » The powered outfeed rolls provide stable and smooth workpiece outfeed even for especially thin or smooth materials. The rolls remain perfectly parallel even after long-term use.

Speed up Your Moulding
Operation with the Latest
Technological Breakthroughs
from **LEADERMAC**

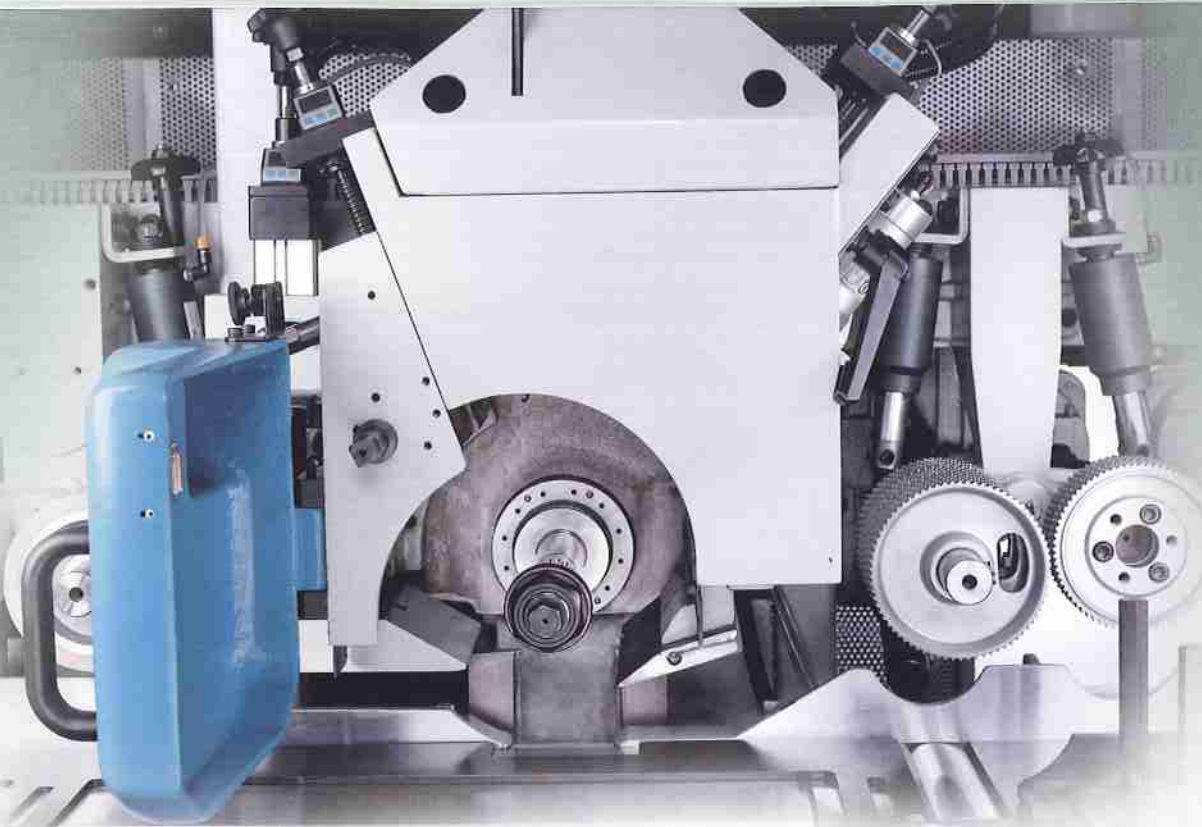


Individual LED Digital Readout for each Spindle

The desired adjustment value for each spindle can be conveniently preset and displayed on the LED digital readout. With these digital readouts, you get more convenient adjustments and higher accuracy.

uPower series

uPower series



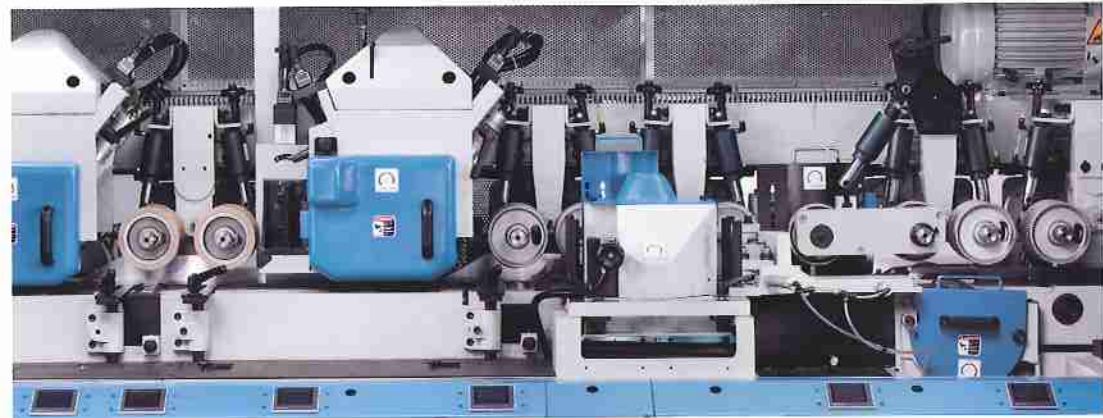
Tilting Pressure Shoes

The specially designed tilting chip breaker shoes and pressure shoes are positioned close to the cutterhead, providing stable pressure on the wood when cutting. This outstanding design feature offers increased stability of the wooden workpiece, and produces a superior surface finish.



Anti-Kickback Fingers

Located at the infeed end of the 4-side moulder, the anti-kickback fingers effectively prevent any wood kickback when feeding workpiece into the machine.



LIFTABLE AUXILIARY FEED ROLLER

The mechanism provides added smoothness for short workpiece feeding. The auxiliary feed rollers are power driven for effortless feeding effect, and are liftable for convenient cutter change or setup.

Advanced Ideas for Rigorous Moulding Requirements

FEED SYSTEM

The Infeed Rolls work in conjunction with a limit switch to stop the machine if workpiece is too thick or there is a double up.

POWERED INFEEED ROLLER

The smooth initial feeding of the stock is achieved by means of independently powered Feed Rolls. There are more Powered Top Rolls & Powered Full Width Bottom Rolls than almost all competitors' machines.

CENTRALIZED LUBRICATION POINTS

Greasing to all critical parts is conveniently made by the centralized arrangement of color coded lubrication points along the front of the machine.

CONVENIENT SPINDLE ADJUSTMENT

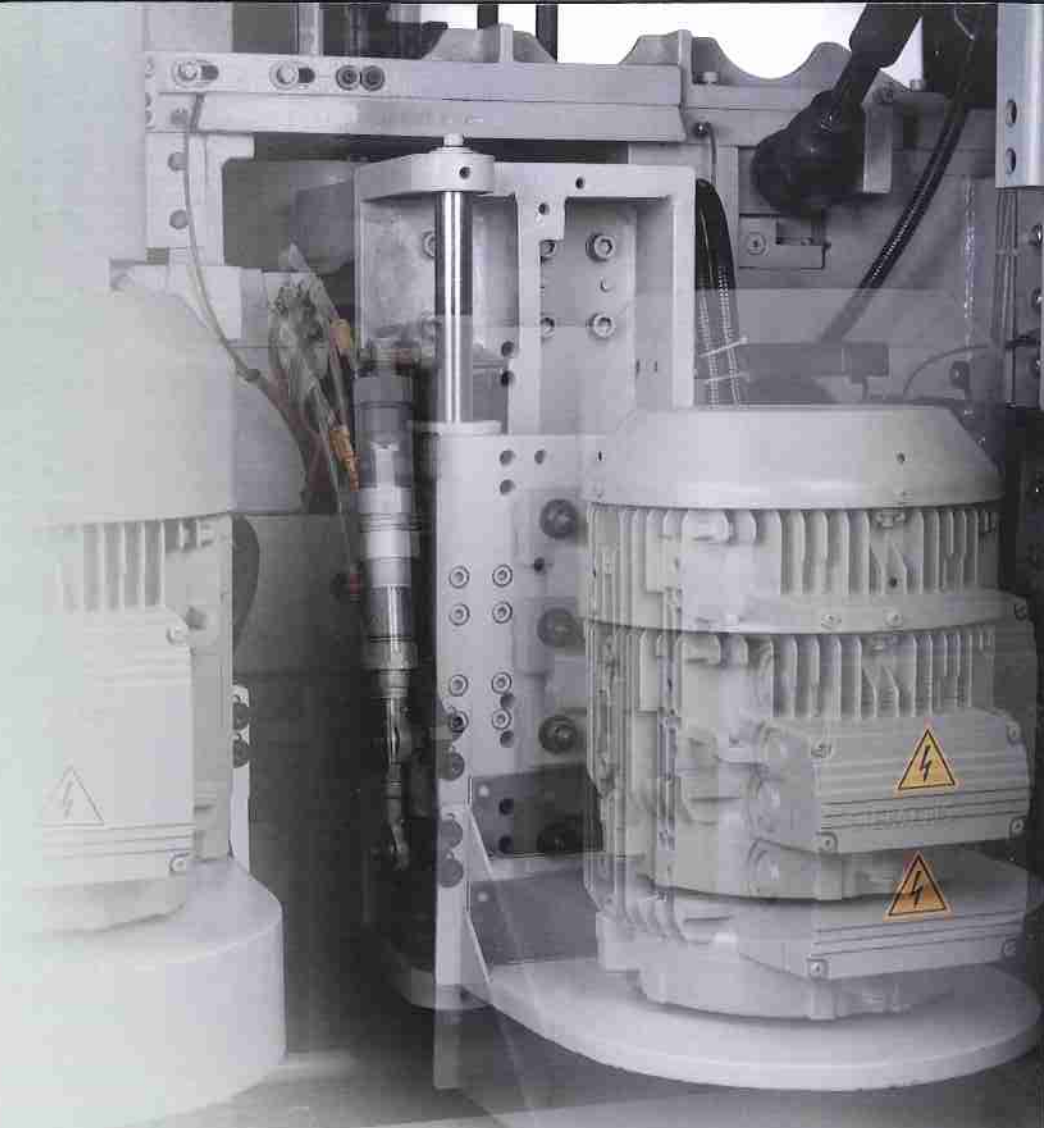
Adjustment of all spindles is easily effected from the front of the moulder. The adjustment points are all at the same height, for more convenient and faster adjustments.

SIDE PRESSURE WHEELS FOR 2ND SPINDLE

Provides positive feed effect for short and narrow stock by 3 pneumatic controls.

PNEUMATICALLY PRESSURED SIDE PRESSURE ROLLS OPPOSITE 2ND REAR SIDE HEAD SPINDLE

Provides positive feed effect for all types of material & short and narrow stock.



Synchronized Adjustment Vertical Spindle and Motor

- » The vertical spindle and motor assembly are adjusted synchronously for added convenience.
- » Extra large vertical spindle adjustment (axial direction) reaches up to 100 mm.



Digital Readouts for Chip Breaker Shoes and Pressure Shoes

Both chip breaker shoes and pressure shoes are equipped with LED digital readouts, allowing for accurate and convenient adjustments to be made on pressure shoes.

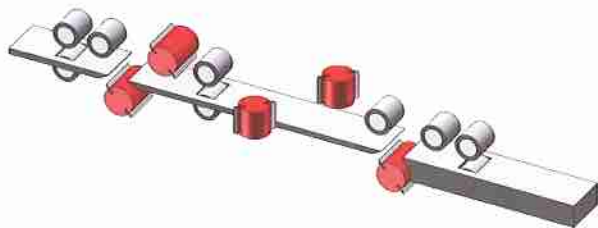
UPower Series

STANDARD EQUIPMENT:	523 to 923	Available Options
Number of Heads / Spindles, min-max	5 to 9	Any Head Configuration - available
Working Width (with a tool cutting circle of 125mm)	15-230mm (.59"-9")	to 300mm(12")
Working Thickness (with a tool cutting circle of 125mm)	10-150mm (.39"-6")	to 200 (8") or 250mm (10")
Basic Spindle Motor capacity	10/15HP (7.5/11KW)	to 15HP(11KW)(1ST BOTTOM SPINDLE) , 20HP(15KW)(VERTICAL SPINDLE), 20HP(15KW)(TOP AND 2ND BOTTOM SPINDLE)
Spindle Diameter	40mm	50mm, 1 13/16" / 2 1/8"
Spindle Speed	6000 RPM	7200 RPM
Tool cutting circle, First Bottom Spindle, min-max	125-160mm (4.9"-6.30")	115 - 160mm(when option HSK 80F SPINDLE)
Tool cutting circle, Vertical Spindles, min-max	125-215mm (4.9"-8.46")	80 - 160mm(when option HSK 80F SPINDLE)
Tool cutting circle, Horizontal Spindles, min-max	125-215mm (4.9"-8.47")	80 - 160mm(when option HSK 80F SPINDLE)
Feed Motor	7.5HP/inverter(5.62KW)	10/15/20HP/inverter(7.5/11/15KW)
Feed speed, infinitely variable by frequency (VFD) driven	36m/min (117fpm)	
Top Feed Rolls - Diameter	140mm (5.5")	
Top Feed Roll Width - Multiple Rolls Stacked on shafts	50mm (2")/Roll	
Bottom Feed Roll Width	Full Width	
Pneumatic pressure for feed rollers, max	6 bar (85psi)	
Adjustment range for Infeed Table(Btm Head Cut) and Edge Jointing Fence	10mm (.4")	
Adjustment range of vertical spindles (axial)	100mm (3.937")	
Adjustment range of horizontal spindles (axial)	20mm (0.78")	
Length of the Infeed / Straightening table	2M (78")	0.71/1.4/2.5/3M (27.9"/55"/98"/120")
Diameter of Dust Hoods for Vertical & Horizontal Spindles	Ø150mm (5.9")	
Digital Readouts on All Axis of all Heads	Std.	
Full Sound and Safety Enclosure	Std.	
Motorized vertical adjustment of Feed Beam	Std.	
Lateral Pressure Multiple Roller opposite first right spindle	Std.	
Chainless Cardan Shaft Feed System	Std.	

OPTIONAL EQUIPMENT:	
To CE Standards	HSK 80F spindle 6,000RPM (max 160mm length)
SmartSet Touch Screen Controls with 500 or 1,000 Pattern Memory and Download Capabilities from the grinding rooms with upload to the control including Ball Screws, Rotary Encoders & Multiple Digital Readouts on each axis	HSK 80F spindle 8,000RPM (max 160mm length)
Grooved Bed for running very short material	HSK 80F spindle 10,000RPM (max 160mm length)
Opposed Side Heads	Adapters for standard tools at vertical spindle(when order HSK 80F spindle)
Universal Spindle, tool cutting circle min 125mm, max 200mm	Adapters for standard tools at horizontal spindle(when order HSK 80F spindle)
Rip Saw Section with up to 50HP (37.5kw)	Quickly release spindle nut
Left (Opposite) Hand Feed	SIKO Led Digital Readouts for the Chip Breaker Shoes for top spindle
DC Electronic Cutterhead Brakes	SIKO Led Digital Readouts for the Pressure Shoes for top spindle
	Pneumatic Pressure Shoes for top spindle
	Anti-Kickback Fingers

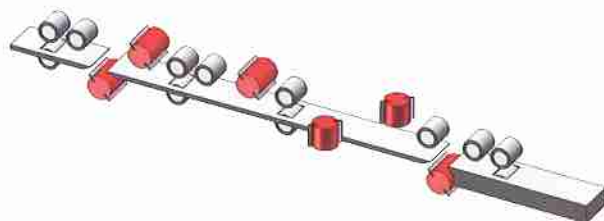
LMC-523

5-SPINDLE



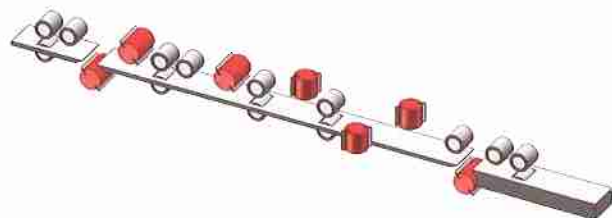
LMC-623

6-SPINDLE



LMC-723

7-SPINDLE

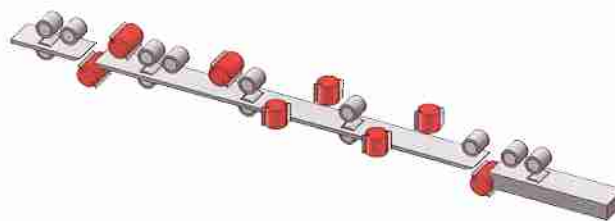


A Wide Range of Spindle Configurations

- Machines of 5 to 9 Heads are available with almost any configuration of heads as desired -
A sampling of some Standard Head configurations -

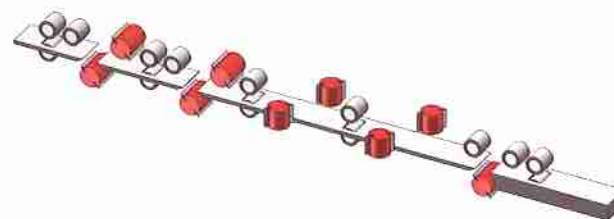
LMC-823

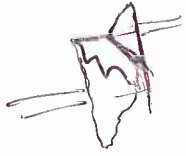
8-SPINDLE



LMC-923

9-SPINDLE





LEADERMAC
MACHINERY CO., LTD.

No. 20, Lane 662, Sec 1, Sha-Tien Rd.,
Tadu Hsiang, Taichung Hsien, Taiwan.

TEL: +886-4-2693-7599

FAX: +886-4-2693-7588 / 2693-7589

<http://www.leadermac.com>

e-mail: lmccemail@ms24.hinet.net

leadinfo@leadermac.com

sales@leadermac.com

