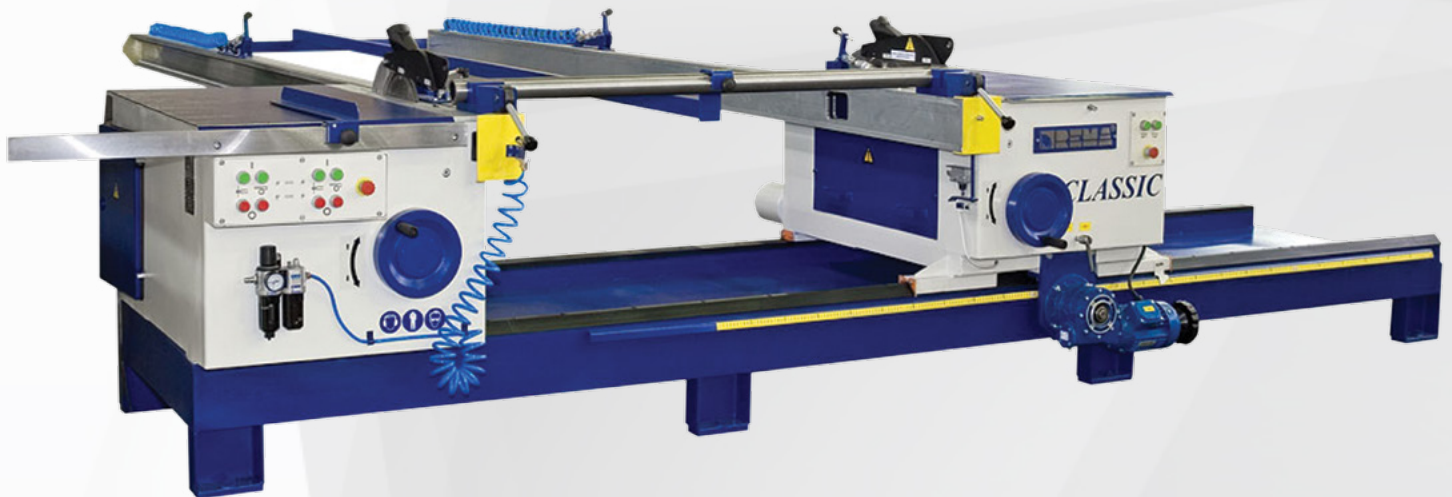


DMGB-35 CLASSIC

Technical Data

TWO CUTTING SETS ALLOW FOR TWO-SIDED FORMATTING DURING ONE WORKING MOVEMENT



REMA S.A.

ul. B. Chrobrego 5, 11-440 Reszel, Poland
tel./ fax 89 755 01 19, e-mail: marketing@rema-sa.pl
www.rema-sa.pl

 **REMA**[®]
WOODWORKING MACHINES

Technical Data

Panel saw DMGB-35 CLASSIC

Main saw blade diameter	Ø 300 mm
Max. sawing height	75 mm
Max. sawing width	2500 mm
Min. sawing width	220 mm
Max. sawing length	2500 mm
Main motor power	2 x 4 kW
Main spindle rotation speed	3500, 4500, 6000 rpm
Main spindle tip diameter	Ø 30 mm
Scoring unit saw blade diameter	Ø 120 - 130 mm
Scoring unit motor power	2 x 0,75 kW
Scoring unit rotation speed	8300 rpm
Scoring unit spindle tip diameter	Ø 20 mm
Motor power of carriage feed	0,37 kW
Extraction outlet diameter – top cover	2 x Ø 60 mm
Extraction outlet diameter – bottom	2 x Ø 125 mm
Air request top extraction system	2 x 360 m³/h
Air request bottom extraction system	2 x 900 m³/h
Weight	1100 kg

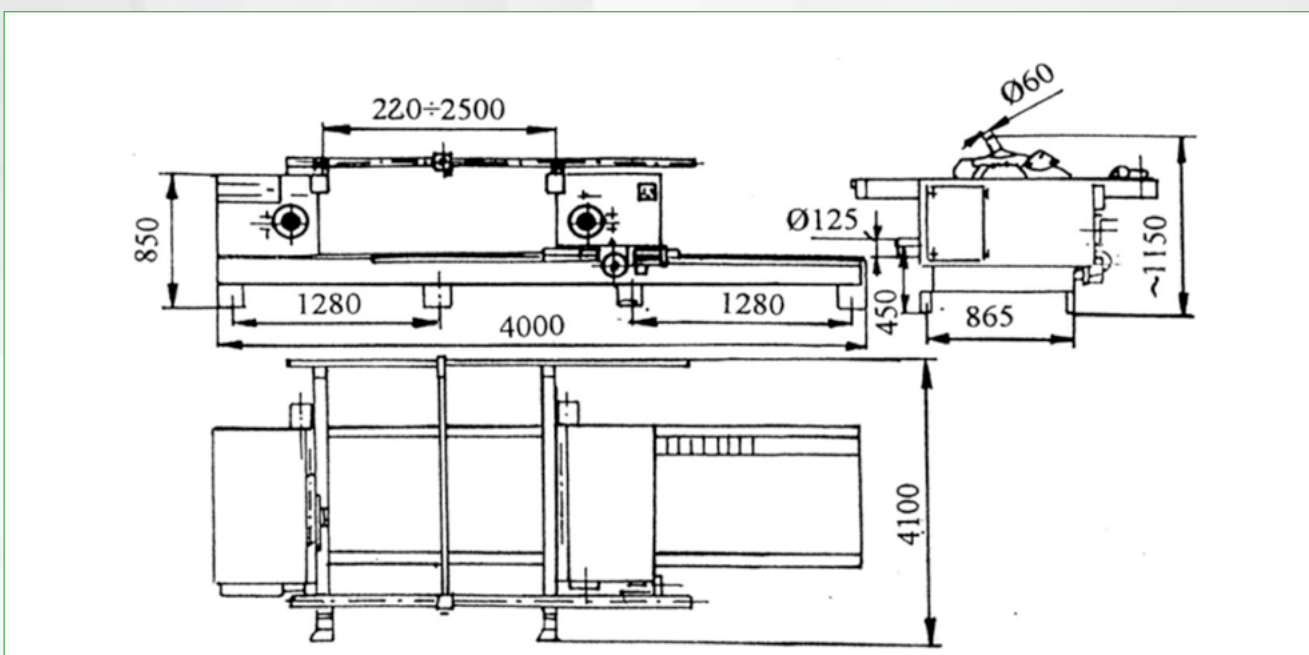
Packaging

		Lenght	Width	Height	Weight
DMGB-35	A	4150 mm	1500 mm	1100 mm	1100 kg
	B	4150 mm	1550 mm	1150 mm	1200 kg

A – Packaging for road transportation (carton + stretch film)

B - Packaging for oversea transportation (wooden box)

Overall dimensions



REMA S.A.

ul. B. Chrobrego 5, 11-440 Reszel, Poland
tel./ fax 89 755 01 19, e-mail: marketing@rema-sa.pl
www.rema-sa.pl