

TM-system solutions for the solid wood industry

If you want to guarantee yourself profitable production of solid wood - right from the time you receive the stack of timber until it has been sticked, dried, cut, planed and graded - then you have vital information in your hand right now.

System TM is Scandinavia's leading producer of automated solutions for stacking, sticking.

Cross Cutting

The fully automated optimising cutting system from System TM is called opti-kap

With an opti-kap cross cut system from System TM you have the option of grading according to quality, the removal of faults and defects in the timber either manually or using a camera technique - also called Hawkeye vision. These facilities make it possible for you to achieve the optimal utilisation of raw timber because the waste is minimised. At the same time, you increase your production capacity appreciably using the minimum of manpower. This means that your firm will benefit from increased competitiveness.

Our greatest strength is that we are, seen from a global perspective, the only supplier of complete automatic cutting systems - i.e. systems that include infeeders, saws, and stackers. Where other suppliers achieve a combined solution by using several manufacturers, we deliver a complete system. This means a full integration between the saw and the automation equipment. The result is an unprecedented high capacity, 12,000 - 15,000 metres per shift with only one man. And there is profit in that.

Further, we also offer the multikap system - either as a system in itself or combined with sorting ability and stacking. Here too the capacity is extremely high - 10 layers of cut, stacked and sticked components per minute.

Stacking and sticking

A stacking equipment from System TM is a future-orientated system with many possibilities for development and many levels of automation. This means that we can at any time offer you the best solution that meets your requirements for both the long and the short term.

With a stacking system you will achieve a range of profitable advantages. You will be able to utilise your kiln fully, because you will be able to handle larger packs that are suited to the dimensions of the kiln. In this area alone, you can save a lot of money on the reduction of internal transport and can avoid wasting energy.

You will have better control over your timber supplier, because you will be able to measure lengths. You can decide for yourself whether you want to have the pack labels written in both cubic or running metres. You will achieve high capacity with minimum manning - a fully automatic system can easily be run by just one man. Something which it would take at least 6 men to do manually.

There are virtually no limits to what you can achieve with our stacking systems - including rejection, length cutting, measuring, and board orientation.



- a safe investment - completely automatic...

cross cutting, automation of planing and moulding machines, sorting and grading of timber. Common to all our installations is that they are built up in modules and are complete systems. In the following sections we would like to present to you our product areas and our company.

Automation of moulding machines and band resaws

System TM offers a range of infeed and outfeed options for both random and packaged length material. By automating your planer you can at least double your capacity and halve the manpower, because the capacity of the main machine is better utilised. At the same time you remove the often heavy and monotonous work in connection with the feeding and removal of material. There is money and common sense in this.

In case our standard equipment does not meet your requirements, we can use our wide range of modules to build a customised solution for you that matches your production, floor space, and capacity exactly.

Grading of solid wood

The grading system

The grading system places your wood into sorting channels carefully, according to length, dimensions and quality. Our sorting system can be supplemented with, for example, a moisture meter and metal detector, so that you can discard faulty material with too high a moisture content or containing metal.

Furthermore, the grading system can with advantage be combined with a multi cross cut saw or other automatic processes.

Like all our other solutions, a sorting system from System TM has high capacity, and its requirement for the minimum of manpower means that personnel will be freed to undertake other productive tasks.

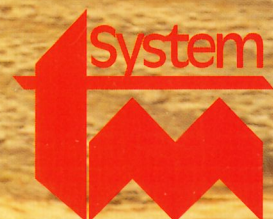
Quality grading

The Hawkeye from System TM equips you with an advanced vision technique that makes it possible for a machine to see the defects in wood in colour - in the same way as the human eye.

An important facility for those who work with pine and spruce, where it is important to be able to distinguish between different qualities. You will no longer be dependent upon specially trained personnel to grade your wood into different qualities.

With Hawkeye, you are always confident of a uniform grading of wood by quality based on previously defined grading criteria such as the number and type of permitted defects - parameters that you determine according to your production.

We have now presented our main products - perhaps you would like to know more about the company behind the products.





Success doesn't come by itself - it demands hard work ...

This is how it is for you, and is how it is for System TM too!

What is System TM exactly?

In all modesty, we are Scandinavia's leading producer of automated solutions for cutting, stacking, automated planing and grading of solid wood.

Our firm is centrally situated in Jutland, Denmark. More exactly, in Odder, some 20 kilometres south of Aarhus. In the 22 years we have existed we have enjoyed continuous progress, and today we stand out as a modern company with more than 100 highly qualified employees, sound finances, and pleasant facilities occupying over 8.000 square metres.

System TM has its own development, production, and electrical process departments, located under one roof. We think this is important. Partly because we derive a better and more in depth product knowledge, and partly because it is easier for us to get the mechanics and electronics to work closely together. The result is better solutions and a proven higher quality in all phases.



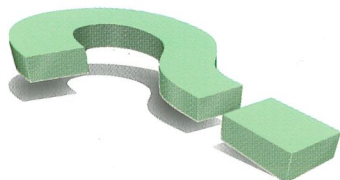
If we begin a collaboration and you would like to see what is going on, come and visit us. We will pay your air fare if you would like to spend a day with us.



We focus on our employees and a safe environment

The main reason for our success lies in our employees. The employees at System TM have often worked for the company for many years. They know each other's fields and they all speak the same language. This gives a good, broad everyday collaboration. Relevant training ensures that we always have the right employee doing the right job. The employees at System TM are professional, capable and competent and they understand how to listen to the customers' wishes and bring them to fruition. People who are responsible and who keep their promises.

Such are the employees at System TM - such is the boss and such are the men on the shop floor - honest and reliable, with both feet on the ground. Perhaps that is the reason why we can call ourselves Scandinavia's leading producer of automated solutions for the solid wood industry.



System TM's employees know the right questions to ask. This ensures that you receive the best advice and an automated solution, that fits your needs exactly.



At System TM you receive the best guidance and advice possible...

You come to the fore with System TM's development...

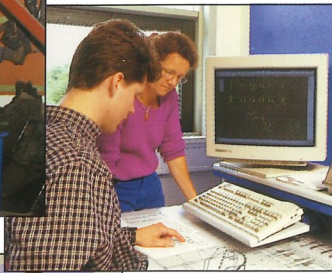
System TM is a living organisation in a close and inspiring collaboration where the individual employee is not isolated and where everyone sees it as a part of the job to come up with good ideas.

Another vital partner in our development department is of course our customers, who in the course of our collaboration give us inspiration and suggestions for new products and, not least, product improvements.

Development for us does not just mean better and faster machines - it is also a question of a better and safer working environment for your operators. It is after all the operators who have to work the machines. They must feel comfortable - and this also benefits you in the long run. As a natural part of our development work, we place great emphasis on your operators' working posture, the noise level, and the safety of our machines and systems. It goes without saying that our machines meet in all respects the requirements of the EC machine directive. We monitor this regularly ...



Capable employees from the production, construction and electrical process departments are involved in making the best solution for the individual customer.

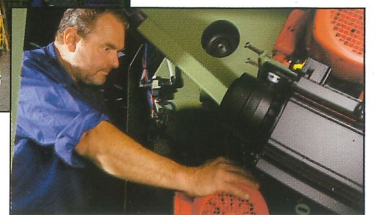


We take pride in being competent. We have worked hard and spent many years analysing the working methods of the timber industry. Only in this way is it possible to establish how the wood machining processes can be done more efficiently, how productivity can be increased with better utilisation of employees, and how it all can be made more cost effective.

Of course you can work out where this is all leading - it's all a question of money - a large profit for you and your business.

A collaboration with System TM really starts when we perceive the problem through your eyes. Thereby we become a worthwhile collaborative partner and we are in a better position to give you reliable advice and guidance.

We place considerable emphasis on being able to advise you correctly and honestly. For this reason our salesmen have either a solid technical or woodtechnology background. Just for your benefit.



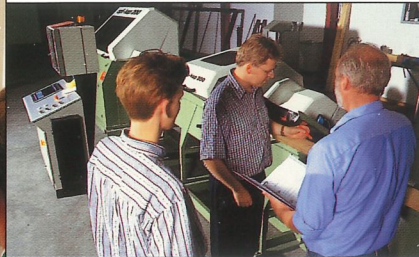
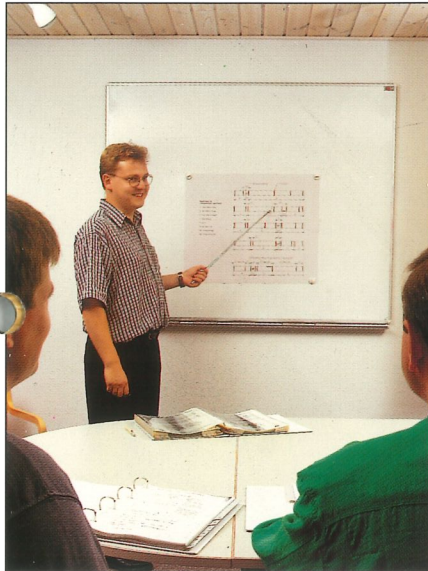
Hard work, focused on the goal - in both the work shop and in the assembly halls.

Many hours are spent and many pencilled lines drawn before the final solution is presented to the customer





System TM is always nearby ...



We guarantee our customers effective training and guidance on the machines.

than the nearest airport, and we guarantee you that within 24 hours from the time you contact us, we will be on site!

In order to be able to help you quickly with spare parts, we maintain a stockroom. This means that we can supply you with the necessary spares within 24 hours of your contacting us.

All our spare parts are specified in our operating manuals and spare parts lists that accompany the system. Moreover, we use only standard products from suppliers with international coverage - and this means that you can quickly obtain spare parts yourself locally should the need arise.

In order to prevent problems, you can also enter into a service agreement with us. This means that we according to a specific agreement will check your system thoroughly, rectify minor faults and generally check that everything is well adjusted so that the system lives up to your capacity requirements.

If you have decided to invest in a solution from System TM, your investment will be operating right from the very first day. That is why we place so much emphasis on testing your system and running it before delivery, regardless of size. In order to give you the best possible knowledge of your system, you and your operators, maintenance engineers, and electricians are invited to a comprehensive training in the construction of the system, its operation and servicing. In this way you can see for yourself, before delivery, that we keep our promises. And you will also be able to carry out the minor maintenance tasks yourselves.

Good service goes without saying for System TM ...

You will never have a better service department than ours. Minor problems are solved over the telephone - and the slightly larger ones are resolved effectively by our experienced and flexible service engineers, who have an ingrained wish to resolve your problems speedily - regardless of where in the world you live.

If the unexpected mishap occurs, we pride ourselves on being with you quickly. Our service engineers are never further away



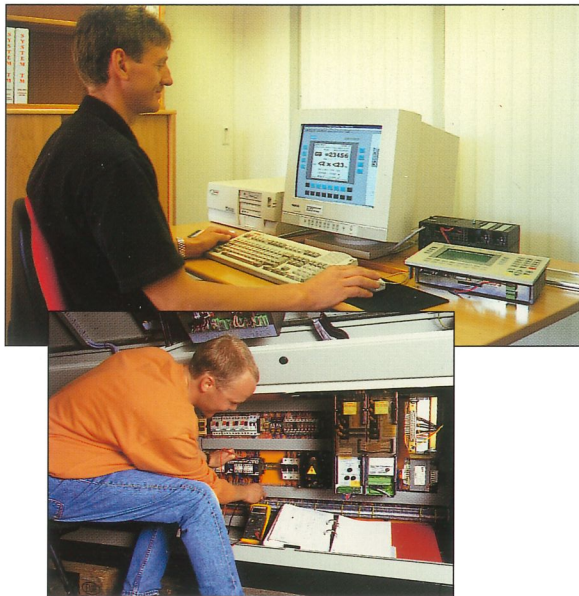
If you have a problem that cannot be resolved over the telephone or modem, we guarantee that our service fitter will be with you within 24 hours of your contacting us.



When you invest in a solution from System TM, you will also receive comprehensive documentation in the form of manuals and spare parts lists - it's useful information.



You are on-line with System TM...



System TM gives technological development a high priority. We make a big effort always to be one step ahead.

We live in dynamic times, and with the new information technologies available the world has become a smaller place. At System TM we value this technology, because it means that we can always be with you to give you support. This applies also to the software that controls your automated system.

You can be connected to our service department via modem - so you will always have help close at hand, because the connection makes it possible for us to look into the system's software. We can therefore quickly tell you where the problem lies and then help you to resolve it. This is service at its best.

We keep our promises...

You can virtually set your watch by us - whether it's a question of delivery, quotations, testing, training, installation of the system in your premises or when you are running at full capacity.

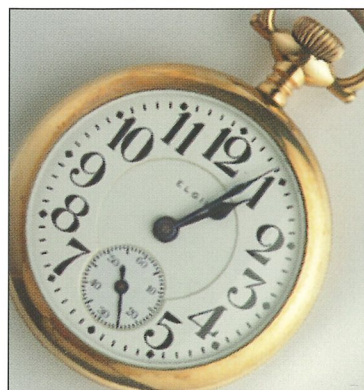
You can also set your watch by us when you need our service fitter - it is not just an idle boast when we guarantee to be with you within 24 hours.

We also guarantee you that our system will live up to the capacity requirements that we have agreed on.

If you have a problem, this will be taken care of immediately. Because it certainly isn't to amuse yourself that you have invested - it's to earn money. And that is something we have a lot of respect for.

Now you have read a whole lot of positive things about us - and so what!

The best thing you can do now is to give us a try. Let us prove that we are just as good as we know we are. The easiest thing is to come and visit us; we will be delighted to see you.



System TM was awarded the Business Prize for 1996 by Unibank, Odder, Denmark's second largest bank.



A company with vision...



Since its founding in 1977, System TM has made its mark with a long list of unique and creative solutions for the handling and grading of solid wood.

With the focus on profitable production and technology, combined with our customers' wishes and requirements, we have created for ourselves a platform that has made us visible on the international scene.

We are proud to be at the leading edge and that we influence development within the wood industry's production.

Right from the start, our ambitions and vision have given us an attractive growth, and we are pleased that

today we can be considered Scandinavia's leading producer within the field of automated solutions for the wood industry.



System TM A/S • Skovdalsvej 35 • DK 8300 Odder • Denmark

Telephone +45 86 54 33 55 • Telefax +45 86 54 32 19

E-mail: tm@systemtm.com • Internet: www.systemtm.com

KJ Bogt/Offset. DK · +45 86 54 03 99