



T-EB 601 EDGEBANDING MACHINE



T-EB 601 is most advanced TURANLAR edgebanding machine which provides complete solution for edgebanding processes. Its perfect design and comprehensive units contribute to meet all requirements of both big industries and small industries in terms of edgebanding process at an affordable price.

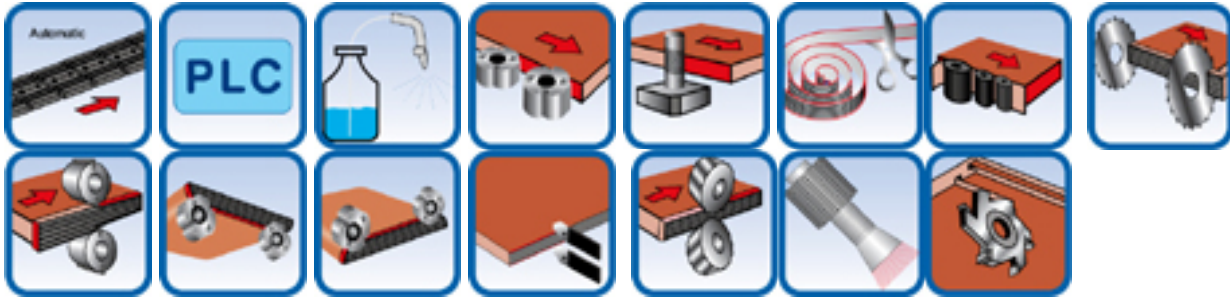
Modern functional design and strong machine structure maintain the machine's trouble-free operation and offers also operating convenience by PLC based control in addition to improved safety conditions for users.

T-EB 601 perfectly performs premilling, gluing, end cutting, top-bottom trimming, top-bottom contour trimming, grooving, radius scraping and buffing processes.

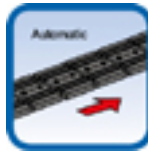
High frequency motors, electrical components, pneumatic system and some other parts inside the machine supplied from most reputable European producers and that guarantees perfect production quality and long service life.

T-EB 601 can easily operate at speed of 12 mt / min and can apply all popular edge materials (PVC, ABS, Melamine, Veneer, Solid wood etc.) to all types of panel up to 3 mm thickness with high precision.

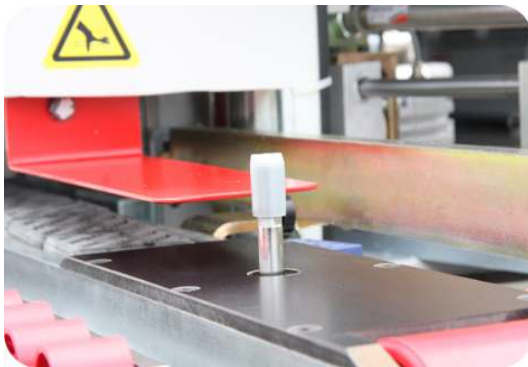
UNITS :



CONVEYER:



PNEUMATIC STOP:



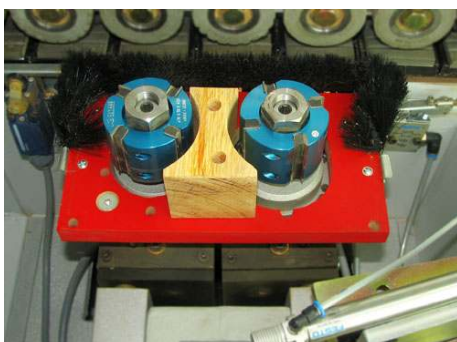
One of the most significant features of this machine is pneumatic stop system. This system prevents a panel from entering to the cutting process until the previous panel has completely left the unit. This ensures the panel not to be damaged by end cutting unit.

ANTI ADHESION LIQUID:



In order to prevent glue to adhere on upper and lower surface of the panel, Anti Adhesion Liquid is sprayed to top and bottom surfaces of the panel.

PREMILLING UNIT:



Premilling saws equipped with two high frequency milling motors (12000 rpm each) ensures perfect preparation of panel for gluing by eliminating its faults and making it smooth and even.

GLUE UNIT:



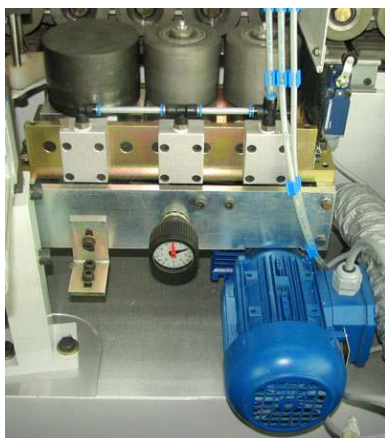
Glue unit provides outstanding gluing quality with hotmelt glue type. Glue basin is covered with the special aluminum chemicals for high performance at the high temperature. The glue joint between edge band and panel is not only hardly visible, but also capable of withstanding all outside effects.

GUILLOTINE UNIT:



Guillotine cuts PVC and other edge materials with approximately 6 -10 mm tolerance.

PRESS UNITS:



Due to three cylinder press units, PVC, ABS, Veneer and other edge materials up to 3 mm thickness can be easily applied to panel.

END CUTTING:



Two angled saws with two individual high frequency motors (12000 rpm each) cut away excesses from the front and rear of the edge material quickly and with precision. By the angled saws, excess edge materials can be cut perfectly and does not cause any damage on the panel.

TOP&BOTTOM TRIMMING:



Top & Bottom trimming units with two individual high frequency motors (12000 rpm each) clean top & bottom excesses of panel with accuracy.

CONTOUR BOTTOM TRIMMING:



Equipped with two high frequency trimming motors (12000 rpm each) for rounding (trimming with radius) bottom and corner of the panel's edges.

CONTOUR TOP TRIMMING:



Equipped with two high frequency trimming motor (12000 rpm each) for rounding (trimming with radius) top and corner of the panel's edges.

RADIUS SCRAPING UNIT:



Radius scraping unit finishes premilled PVC edging using profiled cutters.

BUFFING UNIT:



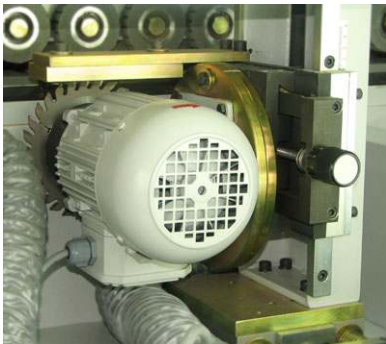
Equipped with two motors (1400 rpm each) for polishing surface of panel.

HOT AIR BLOWER:



After the trimming and milling processes, corners of panel become mat. Hot air blower unit is used for polishing mat corners of panel.

GROOVING UNIT:



It is used for grooving on the panel. While this unit is operating, head and end of the panel don't get any damage.

SAMPLE PROFILES:



TECHNICAL DETAILS

Electrical Level	: 400V – 50 Hz
Nominal Current	: 34 A
Edge Material Thickness	: 0,4 – 3 mm
Board Thickness	: 10 – 46 mm
Speed	: 12 mt/min
Total Electrical Power	: 17,5 kW
Total Air Pressure	: 6 bar
Total Air Usage	: 240 lt/min
Working Height	: 870 mm
Front Milling	: 2 x 1,5 kW / 12000 rpm
End Cutting	: 2 x 0,37 kW / 12000 rpm
Top&Bottom Milling	: 2 x 0,37 kW / 12000 rpm
Trimming	: 4 x 0,37 kW / 12000 rpm
Grooving Motor	: 2,2 kW / 2800 rpm
Buffing Motor	: 2 x 0,18 kW / 1400 rpm
Machine Width	: 920 mm
Machine Length	: 7300 mm
Machine Height	: 1600 mm
Machine Weight	: 2300 kg



Export Center :
Eyup Sultan Mah. Kızılay Cad. Kosova Sok.
34885 Samandıra - Istanbul
TURKEY
Tel : +90 216 561 85 86
Fax : +90 216 561 85 87
E-Mail : info@turanlar.com
Internet : www.turanlar.eu
www.turanlar.com