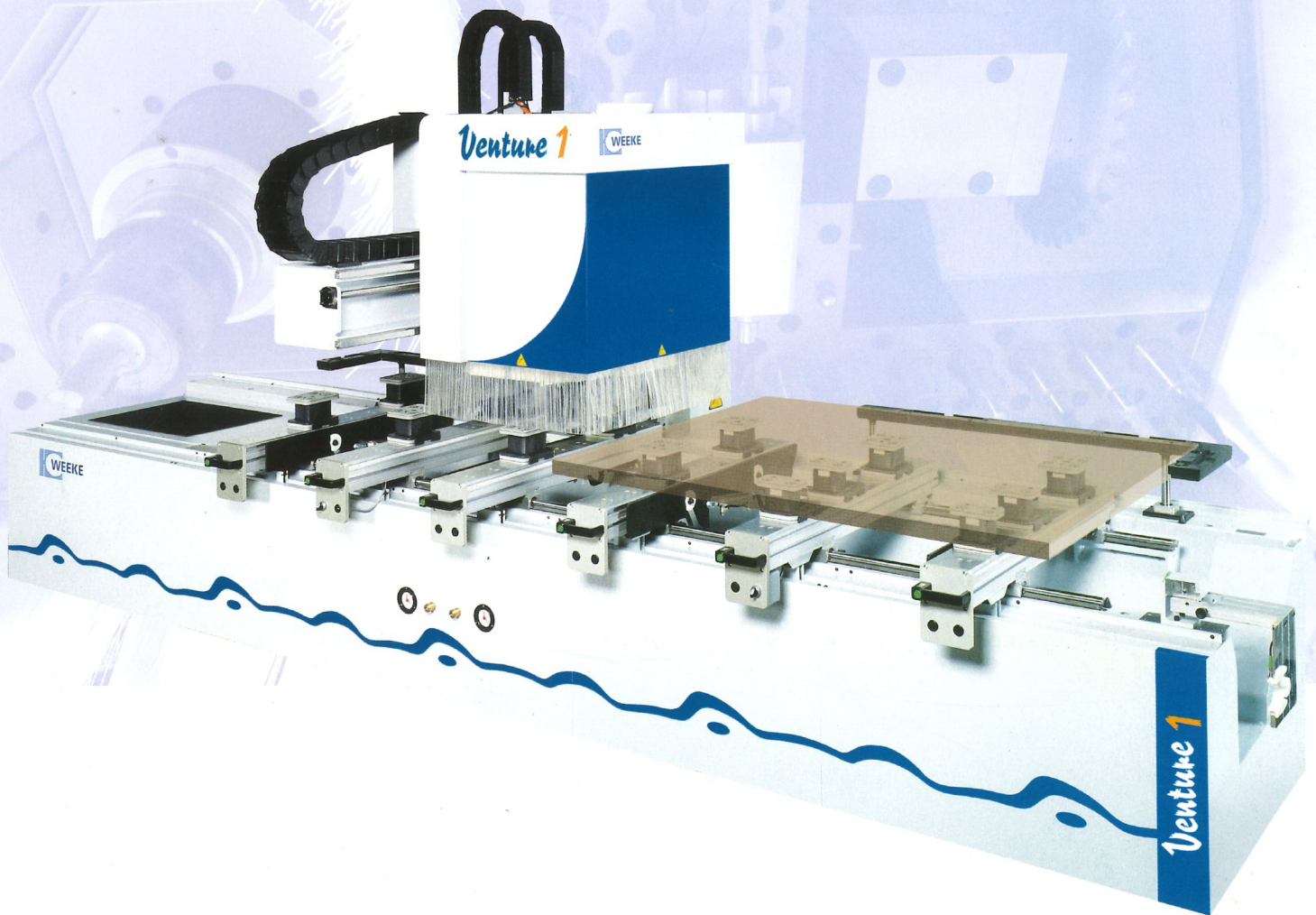


# CNC-Processing Center

## Venture 1



2005



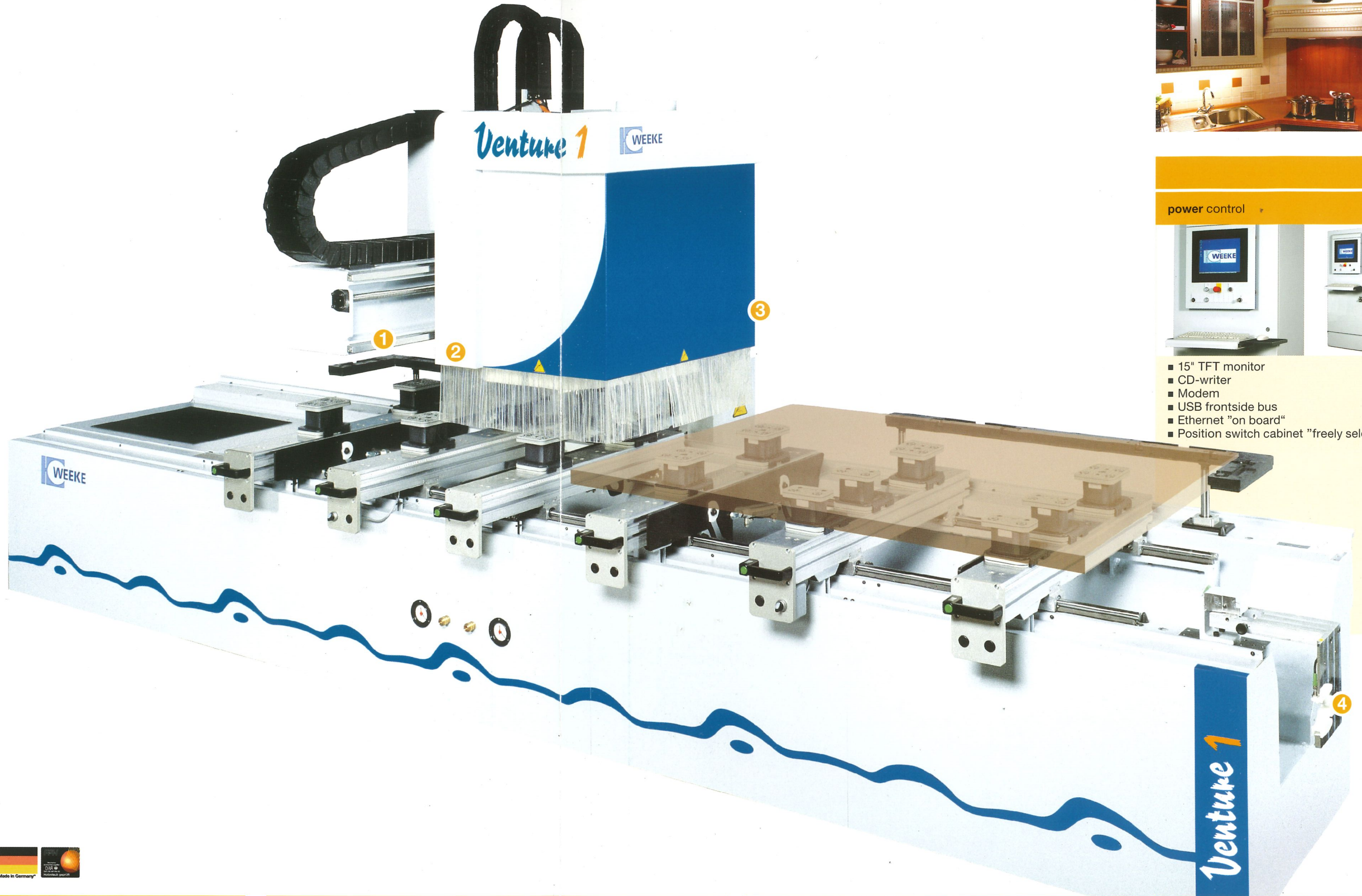


# Venture 1

**Working field:**  
3250 x 1050 x 100 mm

**Highlights:**

- 24 individually selectable and frequency controlled High-Speed spindles (18 vertical / 6 horizontal)
- Even under heaviest processing the heavy steel ribs within the frame absorb any resonance and frame flexing
- Powerful 7.5 kW HSK routing spindle
- 2 Z-axes
- 4 tool changing places
- Flexible clamping system with the Weeke K-Table
- Simple pneumatical fixing of the consoles
- Secure positioning of the vacuum cups via laser positioning
- UPS „uninterrupted power supply“ - protects the computer against damages in case of mains interruption. In such a case the computer is powered down to avoid loss of data.



**power control**



- 15" TFT monitor
- CD-writer
- Modem
- USB frontside bus
- Ethernet "on board"
- Position switch cabinet "freely selectable"

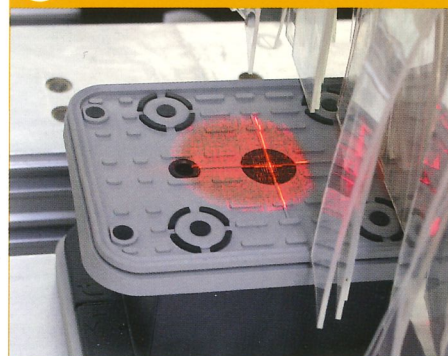


**1 Linear guiding system**



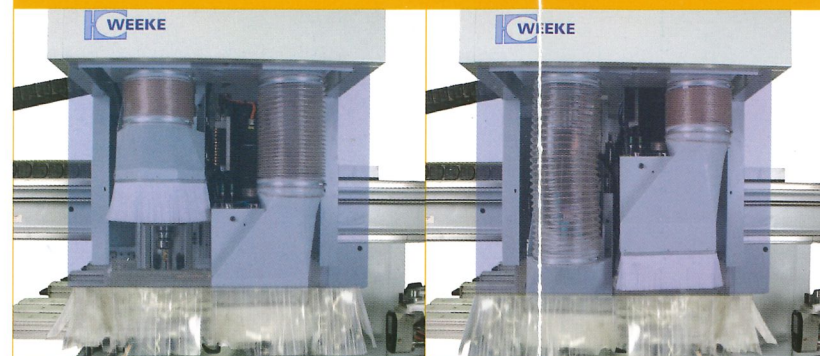
Sealed "long-life" linear guiding system

**2 Laser positioning**



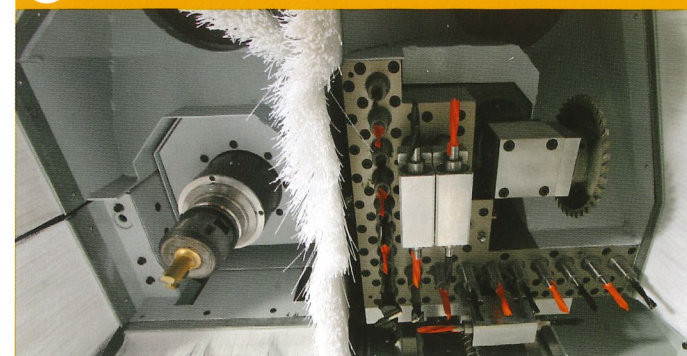
Simple positioning of the vacuum cups through the pin laser

**2 Z-axes**



Optimal dust extraction and bigger operative range for processing tools

**3 Configuration**



■ 18 vertical drilling spindles ■ 6 horizontal drilling spindles  
■ 1 routing spindle with 7.5 kW ■ 1 grooving saw (Ø 125 mm / 90°)

**4 Tool pick-up station**



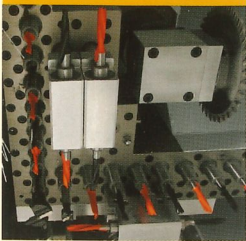
Secure and quick fitting of the tool changer





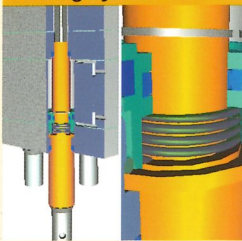
## All inclusive – "Standards" for you!

### High-Speed spindles



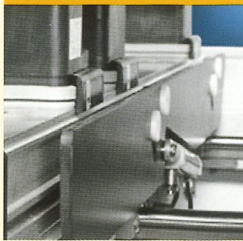
1500 - 7500 RPM

### Automatic spindle locking system



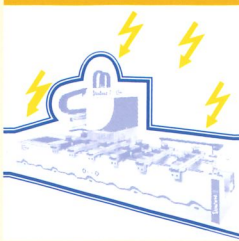
Patented system for exact drilling depth at any time with different materials

### Workpiece feeding rail



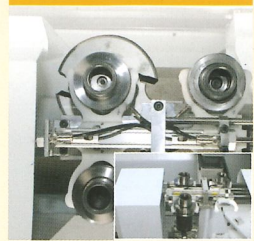
4 solid feeding rails to ease "sheeting" of heavy workpieces

### UPS



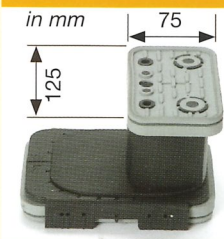
Protects the computer against damages in case of mains interruption

### Tool changer



4-fold tool changer in X-direction (3 x Ø 80 mm / 1 x Ø 135 mm)

### Vacuum cups



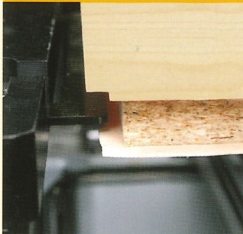
4 narrow vacuum cups

### Vacuum cups



10 standard vacuum cups

### Tilting stops for laminate overhang



Guarantee simple positioning of panels with laminate overhang

### Sealed energy cable



Secure and protected cable guide (X-Y-Z)

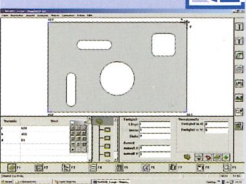
### Tool kit



Top equipment - from the very start

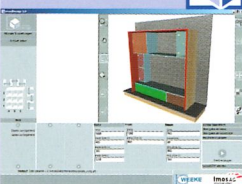
## Software

### woodWOP



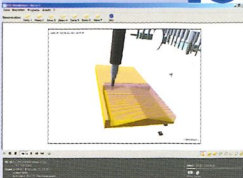
- Modern software based on Windows®
- More than 10.000 installations worldwide

### woodDesign



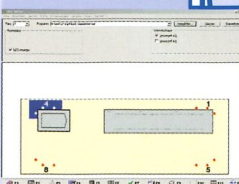
- Simple 3D construction of furniture including a parts list output and export of cut plans

### 3D CNC-Simulator



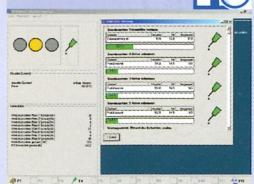
- Simulates the processing in the order it is stored in the NC-program
- Allows time calculation
- Collision check of the vacuum cups

### MCC

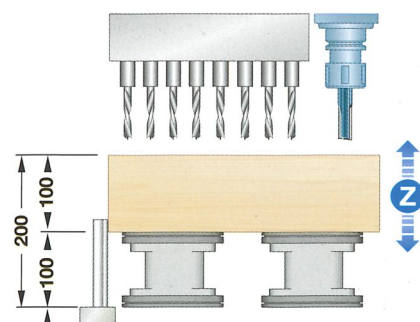
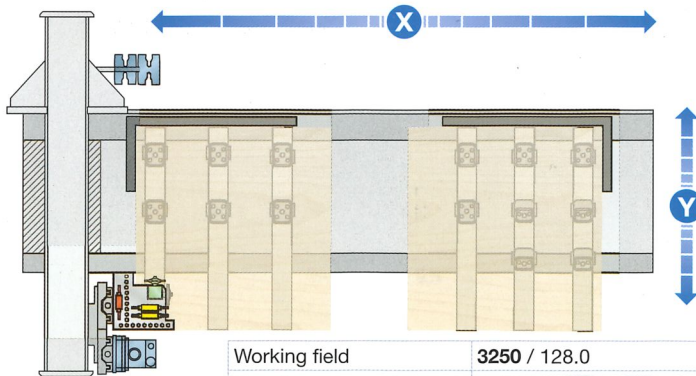


- Modern and simple control of main machine functions through soft keys
- Graphical loading
- Optimized space

### MDR



- Machine Data Recording - collecting and evaluating machine states via time meter and event meter



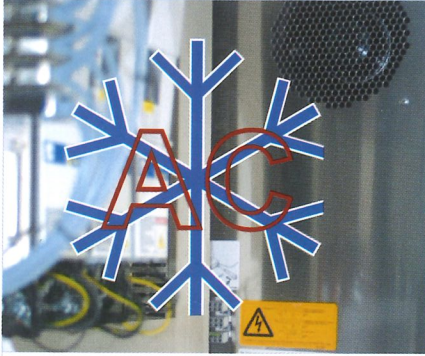
Working field	3250 / 128.0	1050 / 41.3	100 / 3.9
Travel range	3860 / 152.0	1523 / 60.0	185* / 7.3 (250** / 9.8)
Routing	3595 / 141.5	1098 / 43.2	100 / 3.9
Alternating operation	1450 / 57.1		* drilling   ** routing
Two-field operation	1100 / 43.3	mm / inch	



# Venture 1

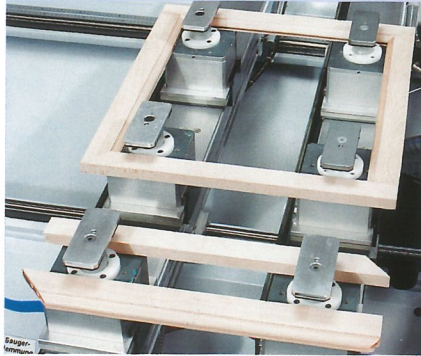
## Options

### Air-conditioning



Air-conditioned cabinet

### Multi-clamping system



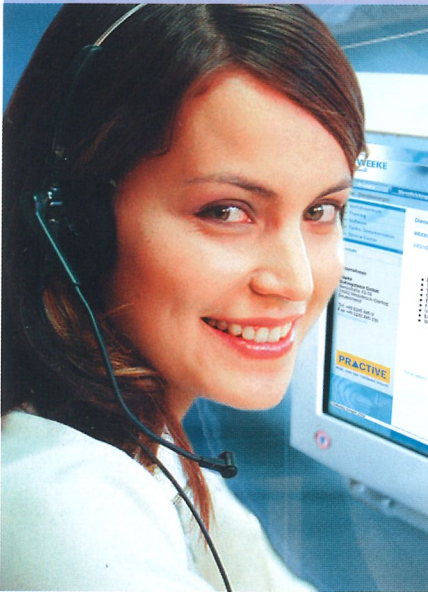
E.g. for frame and narrow parts

### Software



■ DXF-postprocessor ■ barcode software

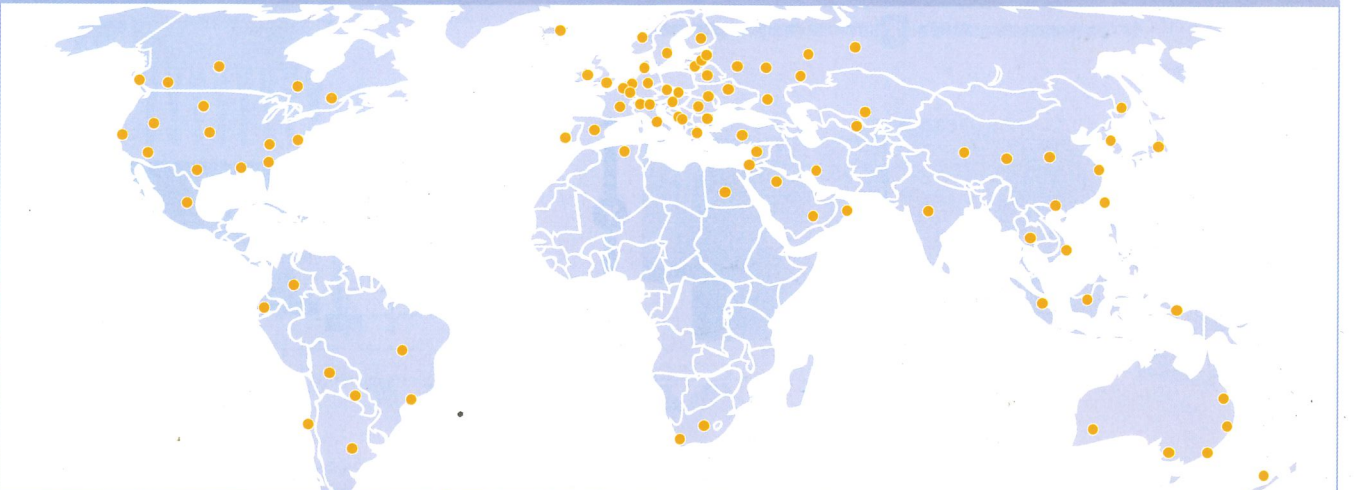
## You may contact us - WORLDWIDE - at all times!



- Teleservice possibility via basic-modem-connection
- Competent spare parts service
- Weeke communication: up-to-date information at all times:  
[www.weeke.com](http://www.weeke.com)
- Any questions, new ideas, criticism & praise to:  
[info@weeke.de](mailto:info@weeke.de)

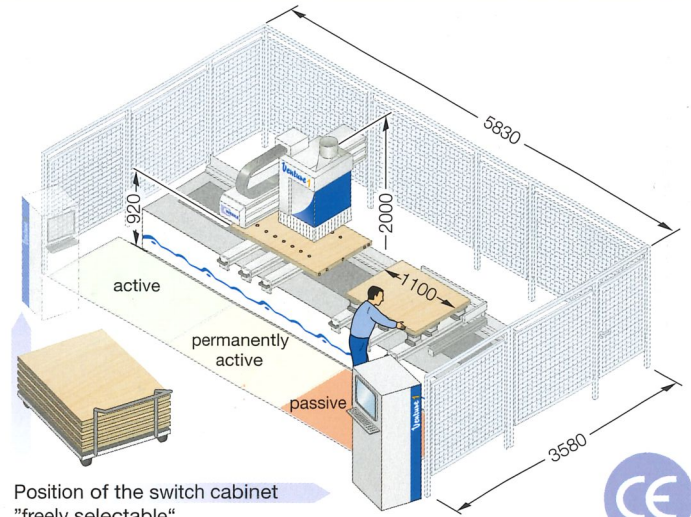
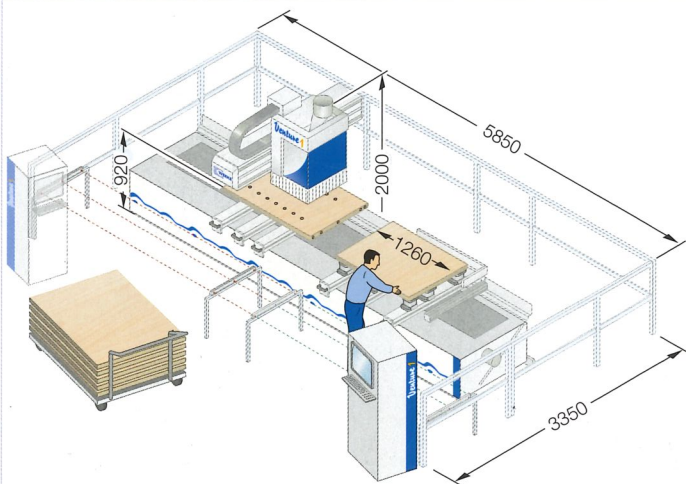
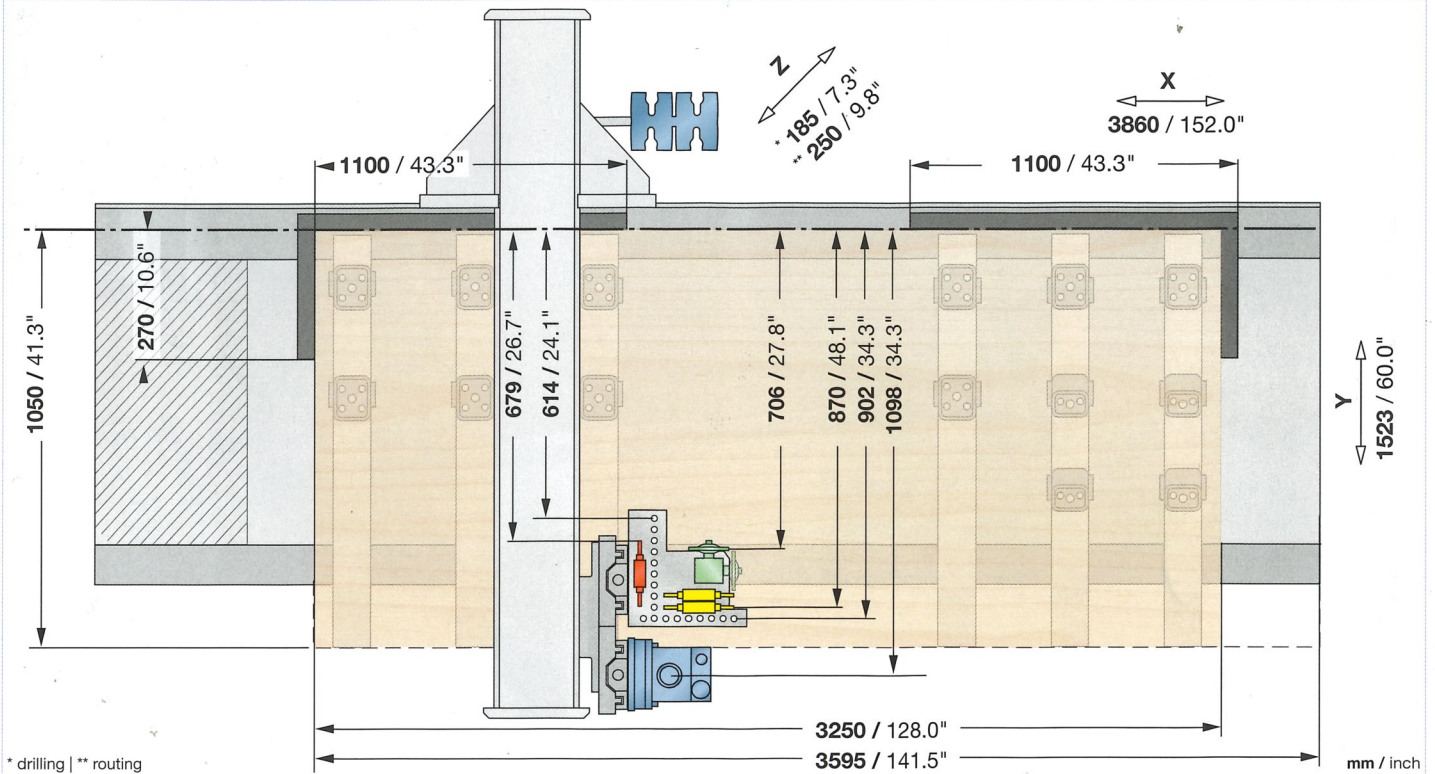


## Worldwide Partners - We are in your neighborhood!





# Venture 1



## TECHNICAL DATA

Travel range X - Y - Z-axis	mm	3860-1523-185*/250**
Rapid traverse speed X - Y - Z-axis	m/min	60 - 50 - 15
Compressed air connection	inch	R 1/2
Compressed air required	bar	7
Dust extraction port	mm	Ø 200
Dust extraction volume	m³/h	min. 3170
Total machine weight	kg	appr. 4200
Electrical power - total connection load	kW	16
Switch cabinet L - W - H	mm	800 - 800 - 1970



**WEEKE Bohrsysteme GmbH**  
 Benzstraße 10-16  
 33442 HERZEBROCK-CLARHOLZ  
 GERMANY  
 Phone: +49 5245 445-0  
 Fax: +49 5245 445-139  
 info@weeke.de - www.weeke.com

NOTE: Equipment as described in this brochure is subject to technical changes and further developments. Some photos show options which are not included in the standard machine configuration. Technical data refer to standard equipment and are not binding for the order.