

CNC-Processing Center Venture 1M



2007/2008

Venture 1M



CNC-TECHNOLOGY



Highlights:

- The heaviest machine in its class - 4.200 kgs
- Vector speed X/Y 110 m/min
- Simple positioning of the vacuum cups through the pin laser
- K-table - tubeless vacuum clamping system
- Electronic surveillance of all stops
- High-Speed 7500 - 24 drilling spindles (18 vertical / 6 horizontal)
- Patented quick change system for the vertical spindles
- Patented automatic spindle locking system
- High-Speed grooving saw - 0/90°
- Powerful 9 kW HSK routing spindle
- 6-fold tool changer inclusive tool pickup station
- 2 CNC-controlled Z-axes
- Software bundle for machine and PC
- UPS »uninterrupted power supply« is standard
- Toolbox »STARTER KIT«



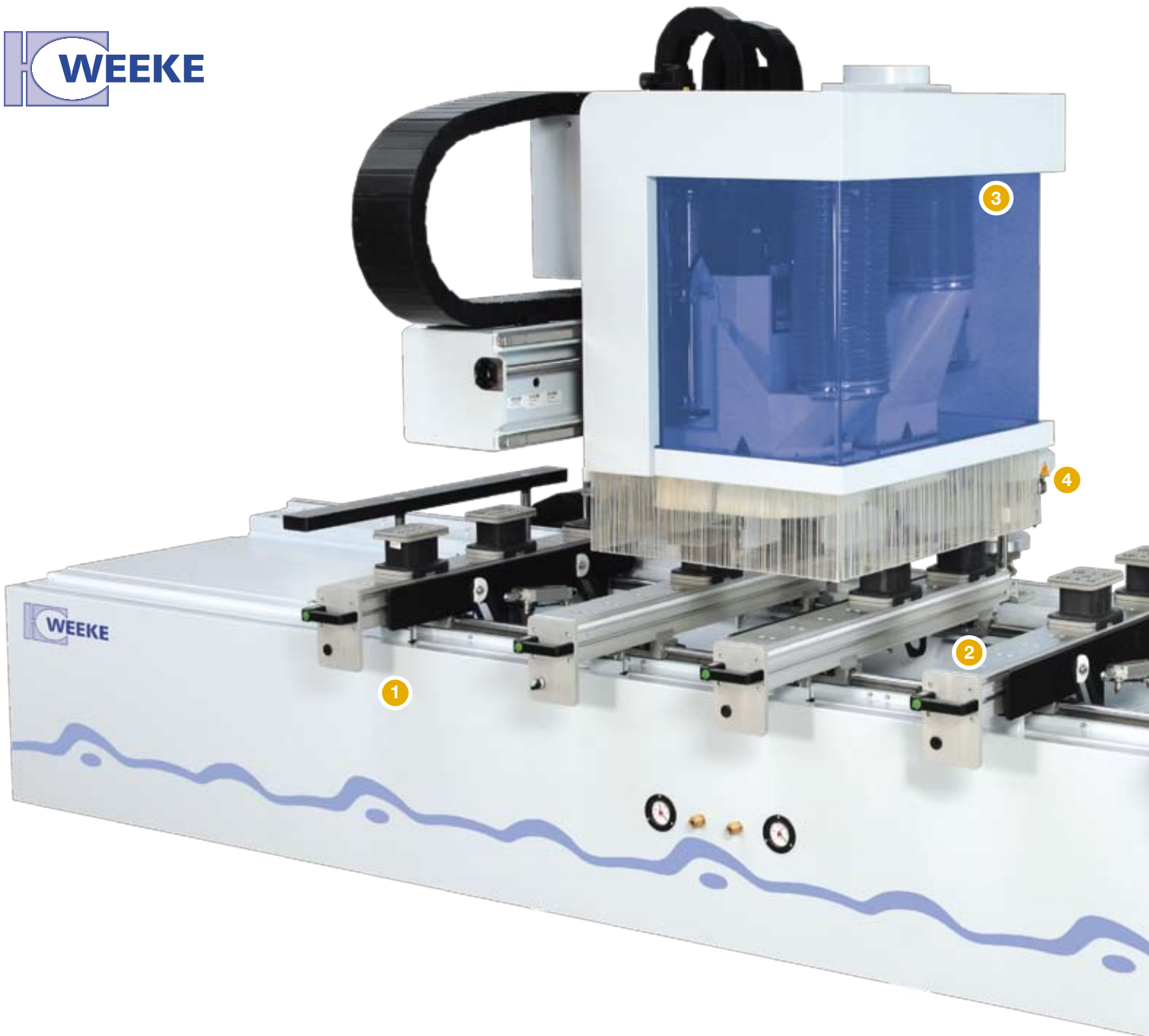
»Quality is the result of skill, motivation – and location«

Our CNC processing centers are already offering the technology of the future.

Why? – Tradition. »Made in Germany« is our motivation and our commitment. Customers around the world have come to expect the highest standards from this quality label.

And we meet those expectations.



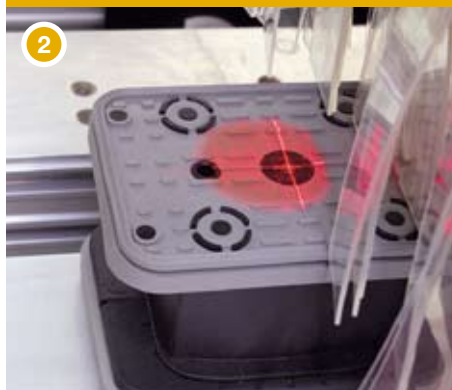


Electronic cylinder surveillance



Enhanced security with the electronic surveillance of lower cylinder positions at all integrated stops

Laser positioning



Simple positioning of the vacuum cups through the pin laser

2 CNC-controlled Z-axes



- Optimal dust extraction and bigger operative range for
- Weight distribution of the mass (processing aggregate) for more stability, higher processing quality

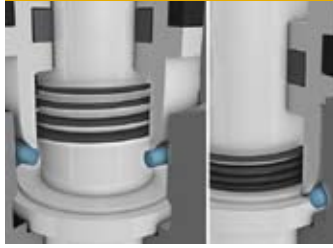
All inclusive – »Standards«

High-Speed-7500



Spindles with 1500 - 7500 RPM incl. the patented quick change system

Automatic spindle locking system



Patented system for exact drilling depth at any time with different materials

Workpiece feeding rail



4 solid feeding rails to ease »sheeting« of heavy workpieces



wood loves **Venture**
// German technology



for processing aggregates
(es) to the two Z-axes ✂

Configuration



- 18 vertical drilling spindles
- 6 horizontal drilling spindles
- 1 routing spindle with 9 kW with HSK F 63
- 1 grooving saw Ø 125 mm (0 / 90°)



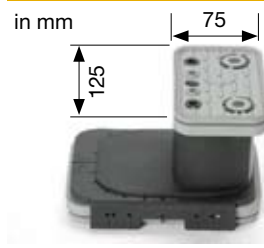
- 6-fold tool changer in X-direction

Sealed energy cable



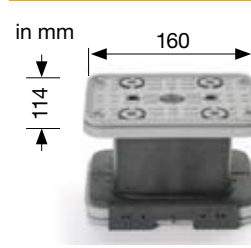
Secure and protected cable guide (X-Y-Z)

Vacuum cups



4 narrow vacuum cups

Vacuum cups



10 standard vacuum cups

Linear guiding system



Sealed »long-life« linear guiding system

UPS



Protects the computer against damages in case of mains interruption

Tool pick-up station



Secure and quick fitting of the tool changer

Toolbox »STARTER KIT«



Top equipment - from the very start

power control PC-85T



- 17" TFT-monitor
- CD-RW device
- Modem
- USB frontside bus
- Ethernet connection 10/100 Mbit
- Ergonomic hand terminal
- Position of the remote terminal »freely selectable« (left/right)

woodWOP



- Modern software based on Windows®
- More than 15.000 installations worldwide

woodDesign



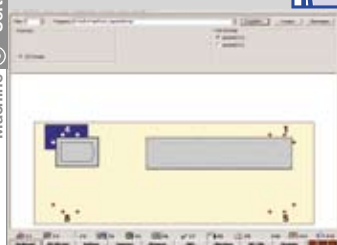
- Simple 3D construction of furniture including a parts list output and export of cut plans

woodWOP DXF Basic



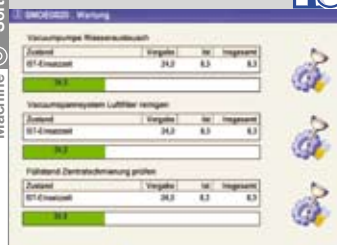
- Interface for CAD-Data Import
- Basis to generate woodWOP programs

MCC



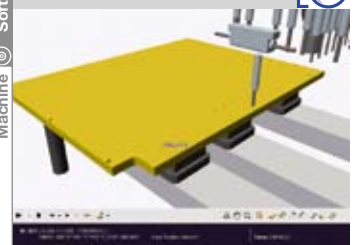
- Modern and simple control of main machine functions through soft keys
- Graphical loading

MDE Basic



- Machine Data Recording - collecting and evaluating machine states via time meter and event meter

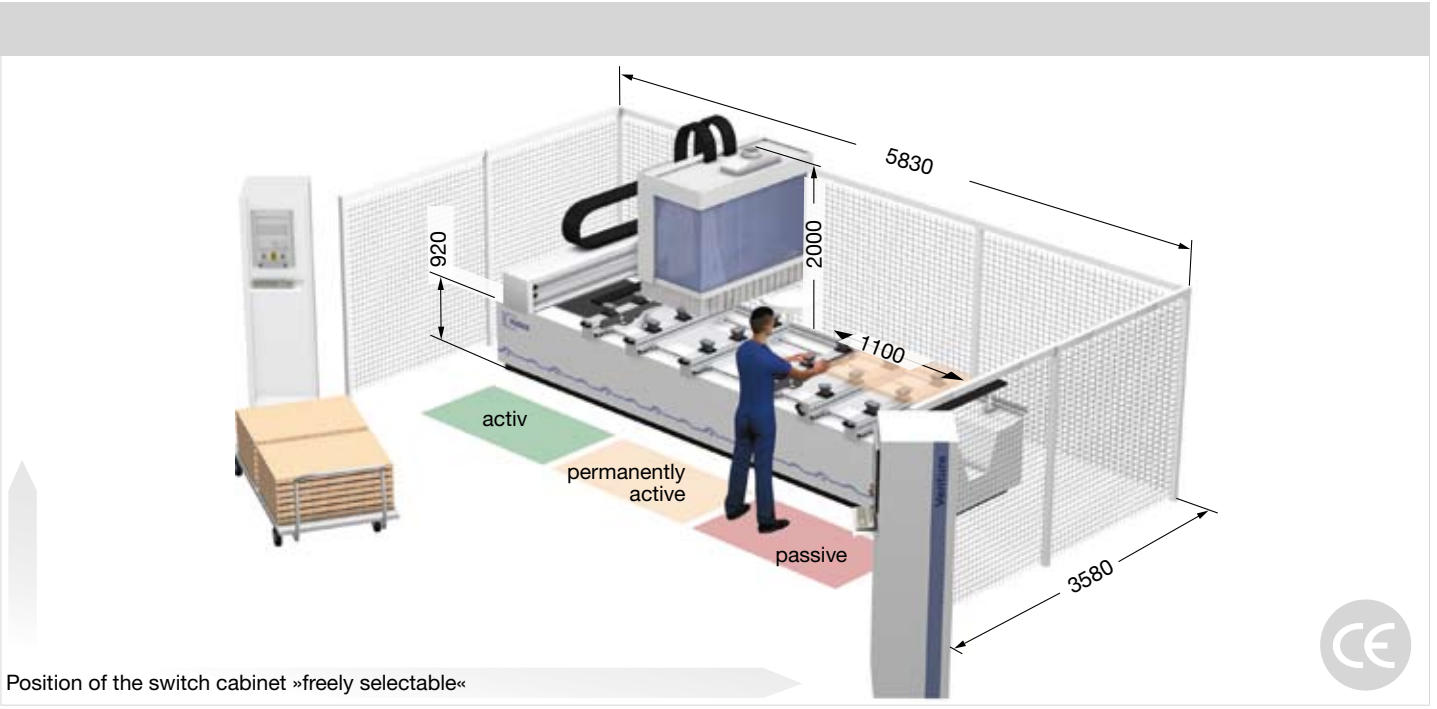
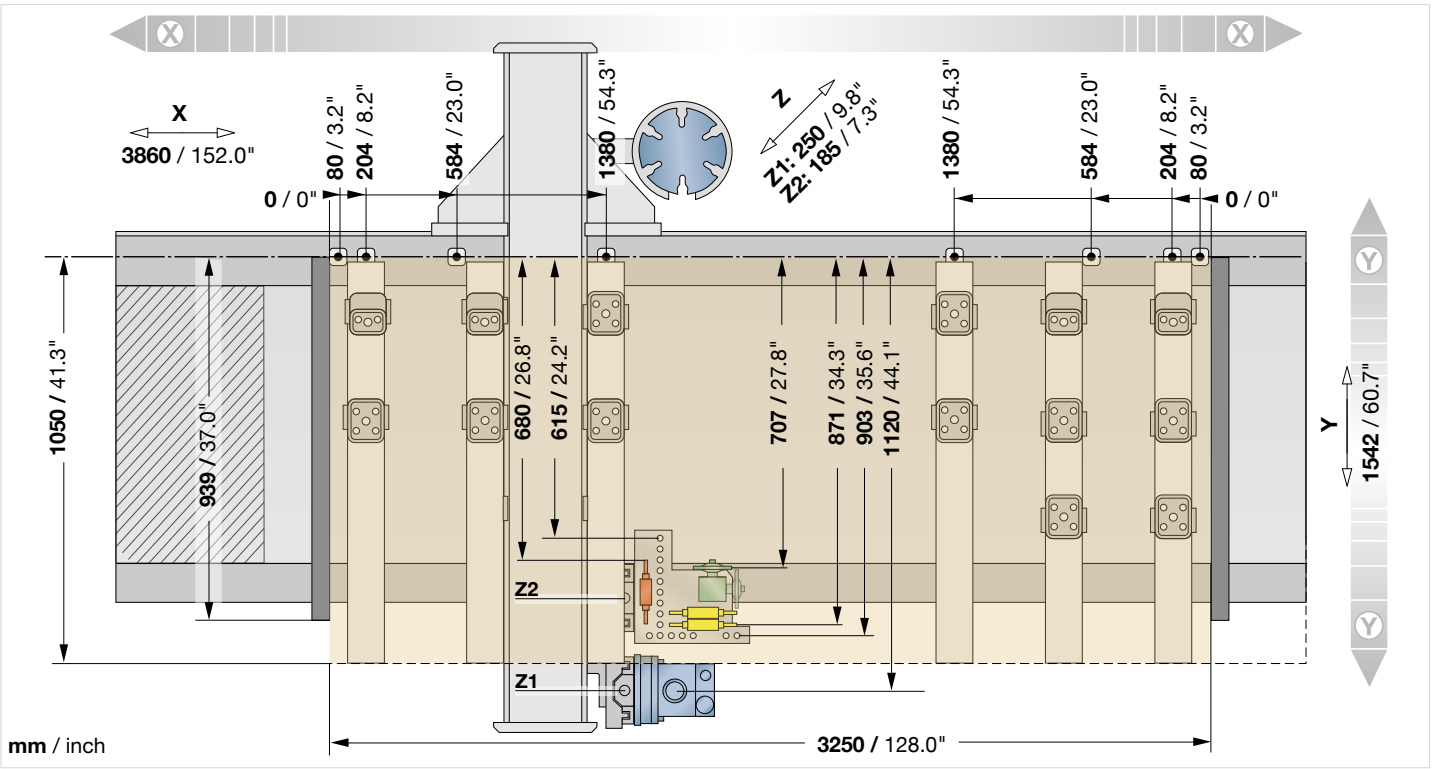
3D CNC-Simulator



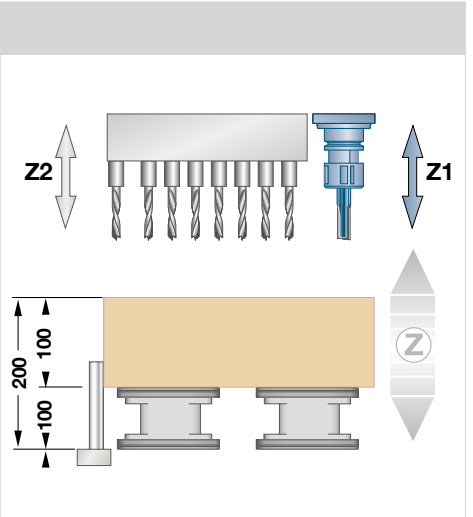
- Simulates the processing in the order it is stored in the NC-program
- Allows time calculation
- Collision check of the vacuum cups

Software Machine for the machine
 Software Office for the office PC

Technical data

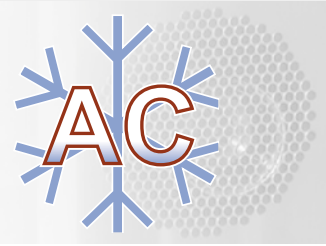


	X	Y	Z
Working field	3250 / 128.0	1050 / 41.3	100 / 3.9
Travel range	3860 / 152.0	1542 / 60.7	Z1: 300 / 11.8 Z2: 185 / 7.2
Routing	3595 / 141.5	1120 / 44.1	100 / 3.9
Alternating operation	1450 / 57.0		
Two-field operation	1100 / 43.3		mm / inch
Vector speed	m/min (X - Y) 110 - (Z) 20		
Compressed air connection	inch R 1/2		
Compressed air required	bar 7		
Dust extraction port	mm Ø 200		
Dust extraction volume	m3/h min. 3170		
Total machine weight	kg appr. 4200		
Electrical power – total connection load	kW 17,5		
Switch cabinet L - W - H	mm 800 - 800 - 1970		



Options

Air-conditioning



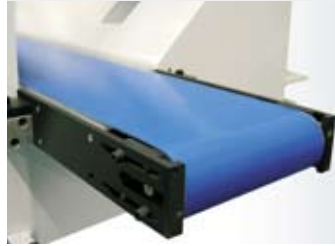
Air-conditioned cabinet

Multi clamping system



E.g. for frame and narrow parts

Chip conveyor



Chip conveyor integrated in the machine frame for disposing of the chips and waste parts

Software

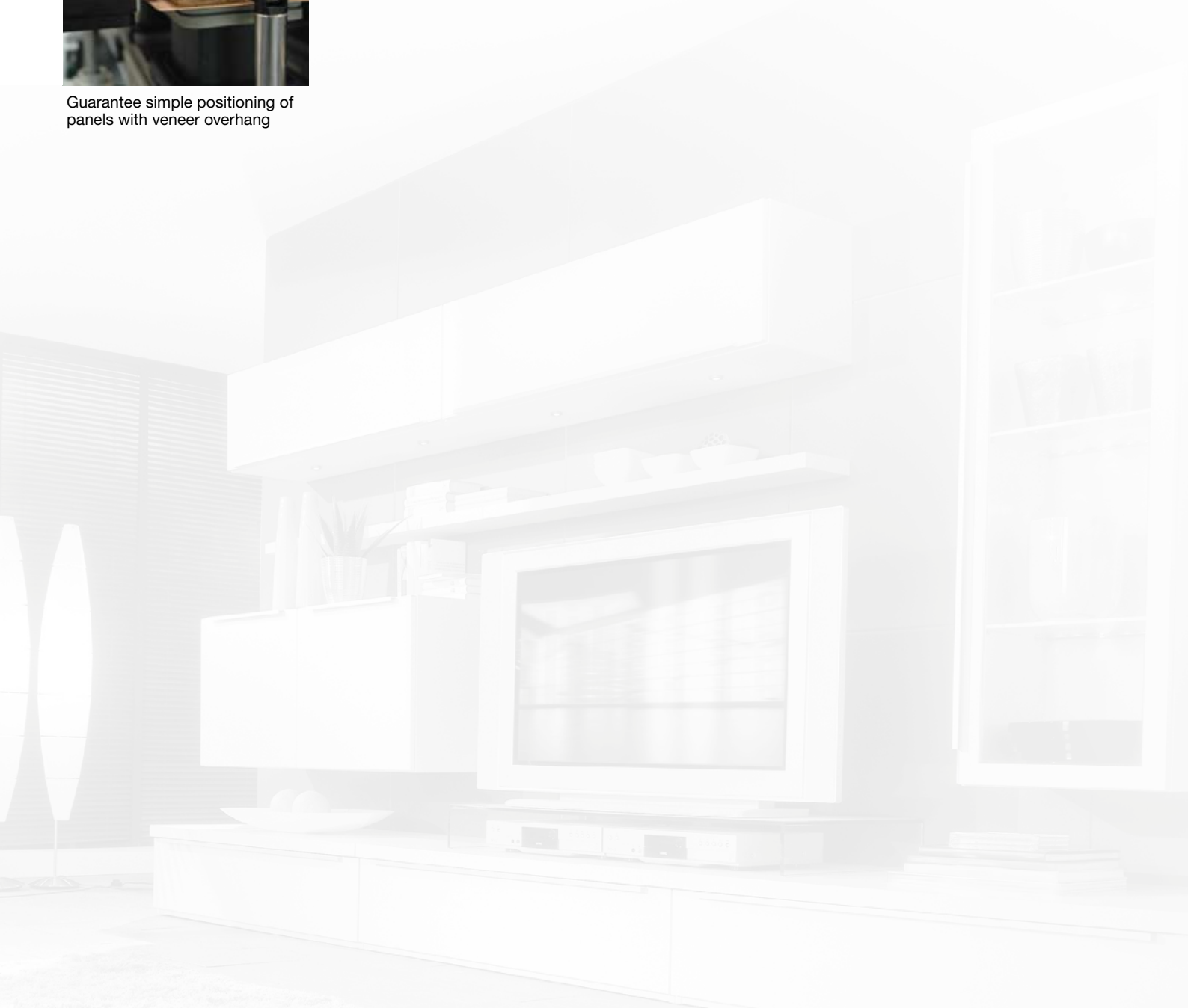


- woodWOP DXF Professional
- MDE Professional
- Barcode Software

Tilting stops for veneer overhang



Guarantee simple positioning of panels with veneer overhang



Handling example: Venture and ABD 100



Venture 1M 122007

Furniture pictures by kind permission of Möbel Wöstmann, Gütersloh

Opimat ABD 100



Highlights ABD 100

- Addition to the processing center or stand-alone solution
- Easy software programming with woodWOP
- Simple and rapid material handling
- No set-up times

You may contact us - WORLDWIDE



- Teleservice possibility via basic internet-connection (TSN-possibility)
- Competent spare parts service
- WEEKE Communication: Up-to-date information at all times: www.weeke.com
- Any questions, new ideas, criticism & praise to: info@weeke.de

Part of the HOMAG Group

Contact



WEEKE Bohrsysteme GmbH
Benzstraße 10-16
33442 HERZEBROCK-CLARHOLZ
GERMANY
Tel.: +49 5245 445-0
Fax: +49 5245 445-139
info@weeke.de - www.weeke.de

NOTE: Equipment as described in this brochure is subject to technical changes and further developments. Some photos show options which are not included in the standard machine configuration. Technical data refer to standard equipment and are not binding for the order.