

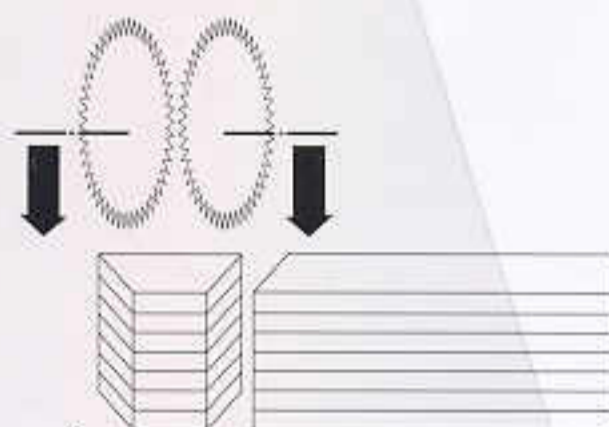
### Troncatrice Cropping saw



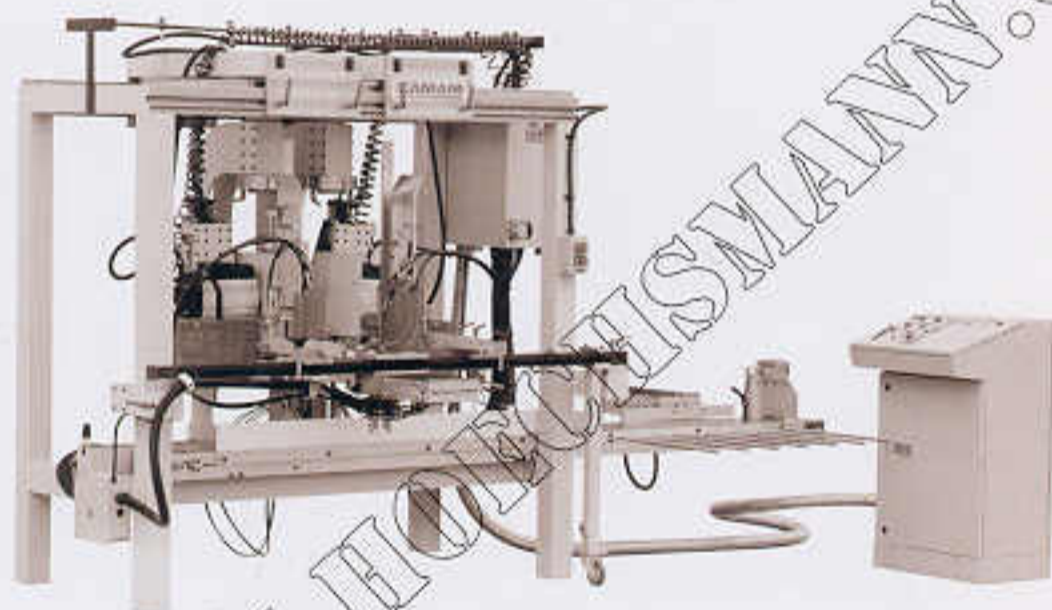
#### TG

Troncatrice per angoli di sedie (Gattefili)

Cropping saw for chair corners (corner reinforcements)



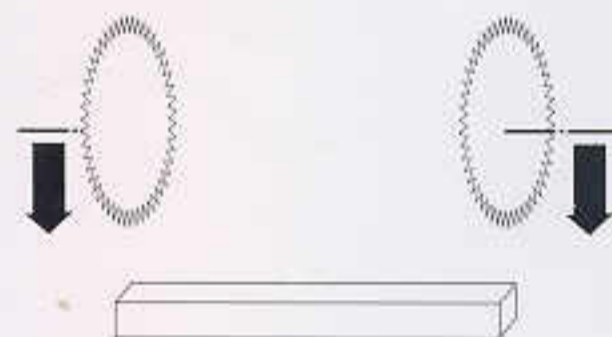
### Intestatrice End-milling machine



#### ID 1200 CR-PLC

Intestatrice doppia per elementi di sedie con caricatore

Double end-milling machine for chair elements, with loader



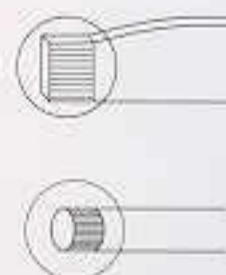
### Zigrinatrici Knurling machines



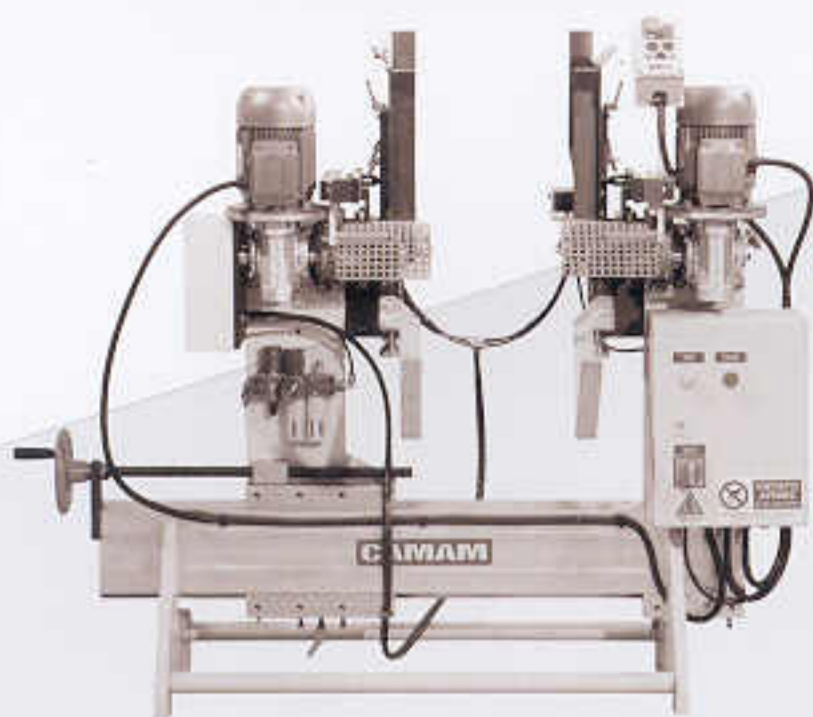
#### ZS

Zigrinatrice semplice per pezzi piatti e tondi di sedie

Single knurling machine for flat and round chair elements



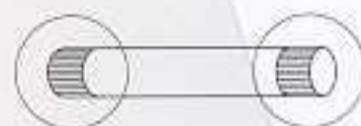
**Zigrinatrici**  
Knurling machines



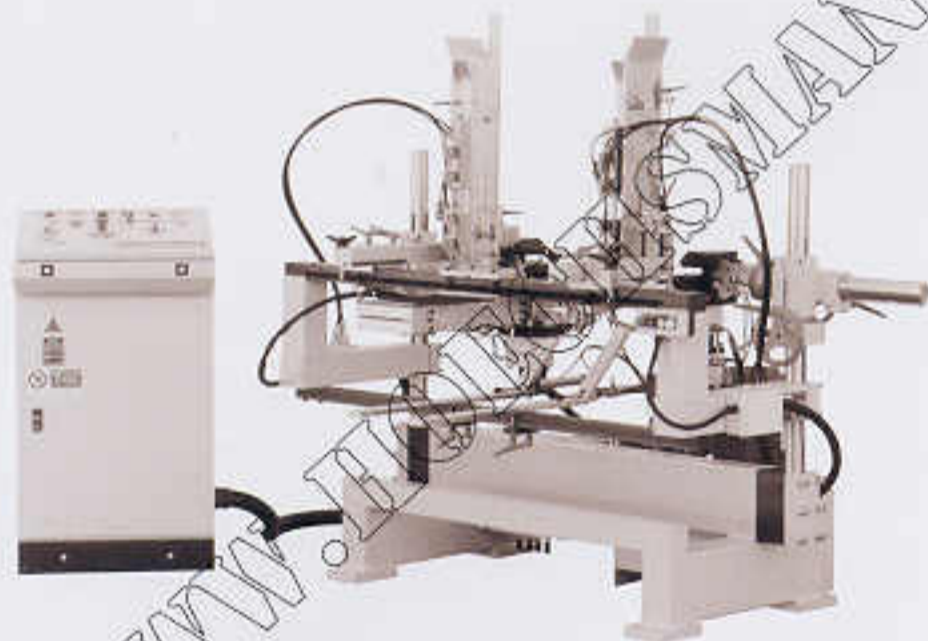
**ZD/1**

Zigrinatrice doppia  
per fuselli di sedie

*Double knurling machine  
for chair spindles*



**Zigrinatrici**  
Knurling machines



**ZDI/2P**

Zigrinatrice doppia  
idraulica per traversi  
di sedia con caricatore

*Hydraulic double knurling  
machine for chair  
crosspieces, with loader*



**Tenditrice**  
Belt tensioner



**TP/1/2P**

Tenditrice di cinghie  
elastiche per tappezzeria

*Tensioner of elastic belts  
for upholstery*



**Avvitaborchie**  
Upholsterer's nail driver



**AVB**

Avvitatrice di viti,  
prigionieri e bussole

*Driver for screws,  
studs and bushes*



**Uguagliatrice**  
Levelling machine



**US/1C**

Uguagliatrice a lama  
circolare per piedi di sedia

*Disk blade levelling  
machine for chair feet*



**Spigolatrice**  
Edger



**SMT/V**

Spigolatrice per gambe  
di sedia

*Edger for chair legs*

