

**CoMatic:**  
Ready to Roll

貝特機械股份有限公司  
CO-MATIC MACHINERY CO., LTD.

台灣 台中市后里區三聯路473-16號 42156  
No. 473-16, San Feng Road, Houli, Taichung, Taiwan 42156  
Tel: +886 4-2556-7105 co-matic@co-matic.com

廣特機械工業(廣州)有限公司  
PRO-MATIC MACHINERY(GUANGZHOU) CO., LTD.

廣州市番禺區沙灣鎮青峰路1號 511483  
No. 1, Qing Feng Road, Shawan, Panyu Dist., Guangzhou, China 511483  
Tel: +86 20 3483 1189 99



www.co-matic.com

Specifications Subject to Change without prior notice

**CoMatic:**

30



**Wireless**

**PORTABLE EDGEBANDER**

It's Time to Change

www.co-matic.com

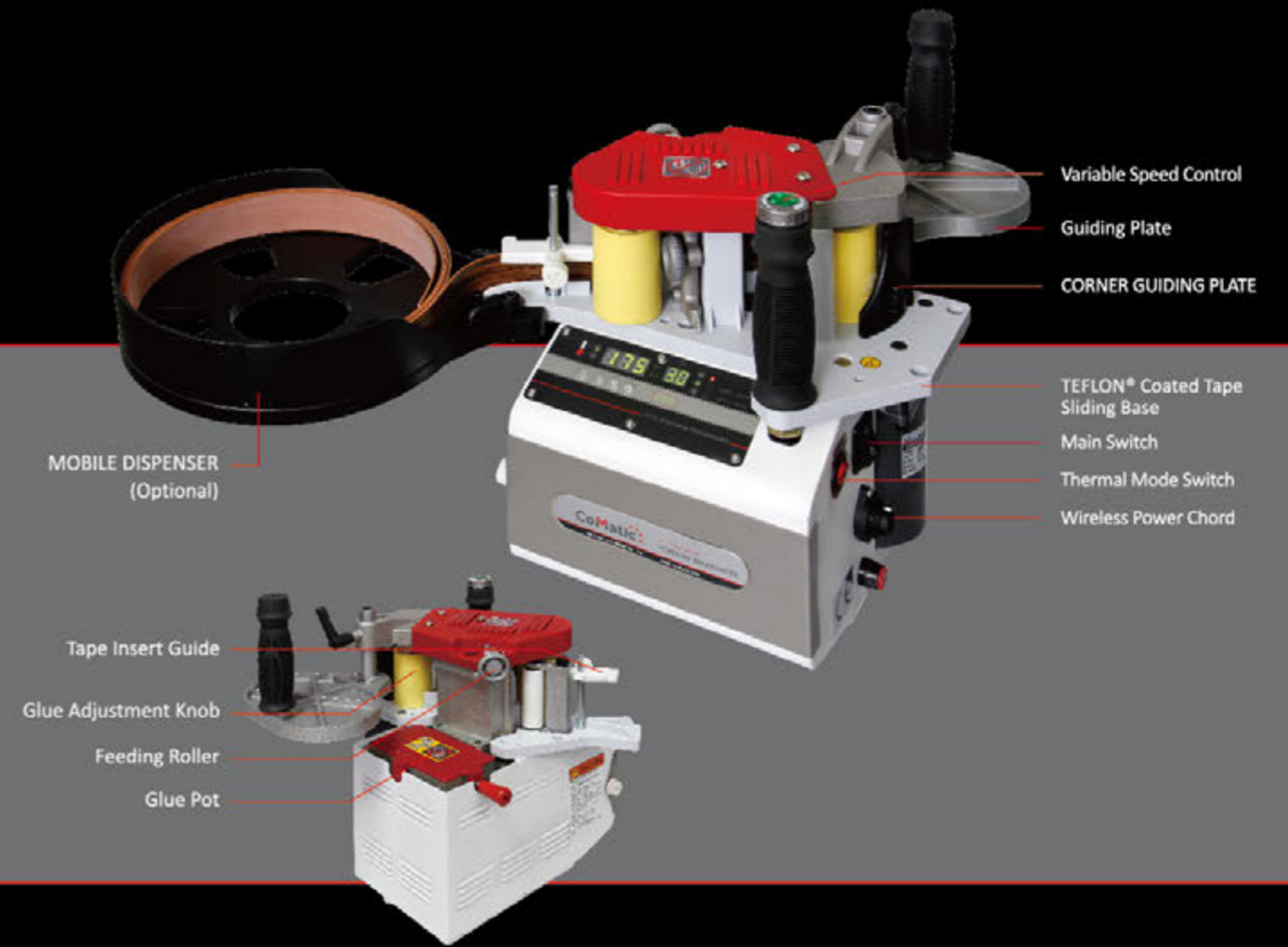
All products are Multinational Patents



# PORTABLE EDGE BANDER

## The Integration of World Lightest, Most Compact, Highest Performance Portable Edgebender

- > Custom alignment for use on straight or curved panels.
- > Automatically applying glue on the tape and amount of the glue applied could be easily adjusted.
- > Work for panel with beveled edges of 75 to 90 degrees.
- > Suitable for portable or stationary application.
- > Quick and easy use by a single operator.
- > Variable speed feed / Digital temperature control / Reheat quickly.
- > Minimum inner radius : 25 mm (1 inch)



**BR 300** >  
PORTABLE EDGE BANDER



> Tape thickness could be easily adjusted to operate edging from 0.4 – 3 mm.



> Easy entrance feeding guide allows quick tape width measurement.



> CORNER GUIDING PLATE allows precise corner edging with ease.



> Digital display & Temperature control.

**BR 500** >  
PORTABLE EDGE BANDER



> The glue adjustment knob is situated on top avoid interference during operation.



> Perfect performance on glue application. Double adhesive is not necessary.



> Guiding plate width can be easily adjusted from scale of 10 – 65mm and can be tilted within 15 degree for bevel edge banding.



> Easy handle speed adjustment enhance operation efficiency.

**WIRELESS**



**DR 500** >  
PORTABLE EDGE BANDER

# SPECIFICATION

## CRUISER CASE



## MOBILE TOTE CASE

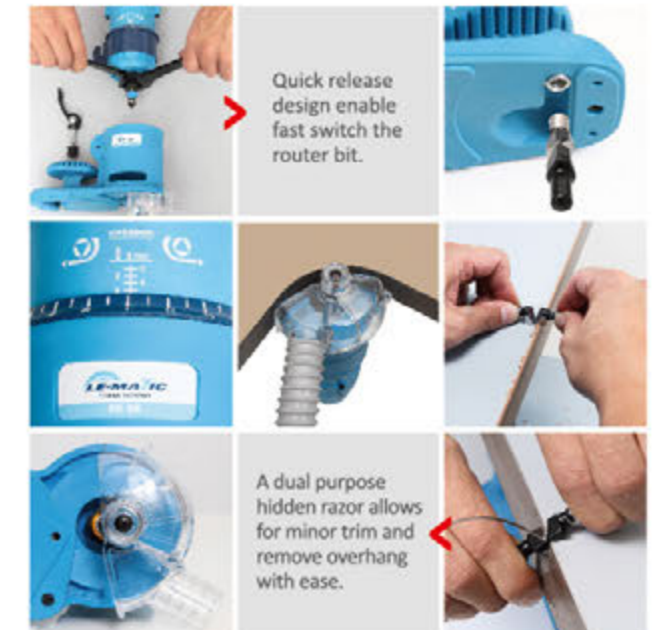


- EDGEBAND TRIMMER
- VACUUM CLAMP SET
- PORTABLE EDGEBANDER

# EDGEBAND TRIMMER

## PD80

> Standard with router bit & Cruiser case



Quick release design enable fast switch the router bit.

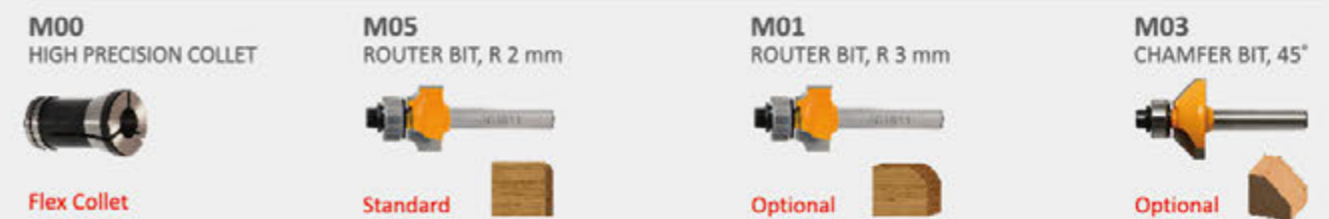
A dual purpose hidden razor allows for minor trim and remove overhang with ease.

Output Power 450 W, 1 Phase, 100-120V or 220-240V  
 No-Load Speed 30,000 rpm  
 Net Weight 2.3 kg  
 Gross Weight 4.3 kg  
 Packing Sizes 350 x 250 x 180 mm

- > PVC, wooded band edge trimming.
- > Unique design for micro-adjust scale with 0.05 mm (0.002").
- > Superior dust collection telescopic vacuum cover.
- > Minimum inner radius : 25 mm (1").

Model	BR 300	BR 500	DR 500
Gross weight - Mobile Tote Case (Cruiser Case)	11.0 kg (19.6 kg)	11.1 kg (19.7 kg)	12.0 kg (18.0 kg)
Net weight	8.7 kg	8.8 kg	9.8 kg
Machine Size		340 x 300 x 350 mm	
Output Power with Motor		855 W	
Glue pot capacity		400 ml	
Warm-up Time		4 mins (120°C/250°F)	
Working temperature	120°C-200°C (250°F-390°F)	MODE 1: 120°C -200°C (250°F -390°F) MODE 2: 80°C -155°C (175°F -310°F)	MODE 1: 120°C -200°C (250°F -390°F) MODE 2: 80°C -155°C (175°F -310°F)
Feeding Speed	4.0 M/min.(13Ft/min)	2 - 6 M/min.(6.5-20 Ft/min)	4.0 M/min.(13Ft/min)
Tape Thickness		0.4 - 3 mm	
Tape Width		10 - 65 mm	
Wireless banding	-	-	o
Temp. Control	o	o	o
Digital display & Control	-	o	o
Speed Control	-	o	o
Packing Size - Mobile Tote Case (Cruiser Case)	350 x 300 x 380 mm / 576 units (20' Container) (460 x 410 x 530 mm / 280 units (20' Container) )		

## Metric System Ø6 mm (other than USA)



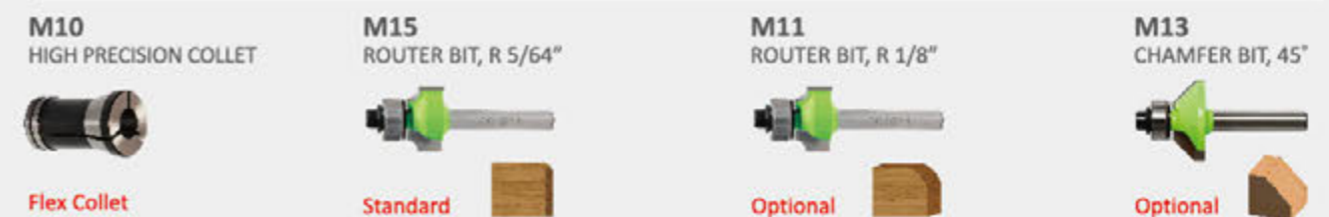
Flex Collet

Standard

Optional

Optional

## Imperial System Ø1/4" (for USA)



Flex Collet

Standard

Optional

Optional

# ACCESSORIES

## MOBILE DISPENSER >

### BC25

- > Prevent possible damage to hanging long edging.
- > Easy clip on design and could hold up edge band from height 10-62mm, thickness 0.4 – 3.0mm.



## STATIONARY WORKTABLE >

### ST95

- > Edgebanders and edgeband trimmers installed onto the stationary worktable ensure accurate application on small, thin, or curved workpieces not suitable for use with vacuum clamp.
- > An embedded outlet and magnetic switch provides a convenient on/off functionality on the edgebander or edgeband trimmer during operation.



## ELECTRIC CLAMPING KIT >

### VP03 (Standard with cruiser case)

- > Powerful vacuum pump suitable for different services.
- > Power outage prevention design.
- > Horizontal and vertical clamping -30°~ 90°.



## VACUUM CLAMP SET >

### VH03N (Standard with Cruiser Case)

- > The clamps will instantly detach when pressure released from the handle.



## VACUUM HANDLES >

### VH11 (Optional)



## TRIMMER ADAPTOR PLATE >

### ST15 (Optional)



- > Easy installation onto edgebander and edgeband trimmer cruiser case.
- > Ensures fast and secure tightening and a strong grip of large panels for edge banding, avoiding scratches and damages on the panel surface.
- > When the working table can not be attached via vacuum clamp, a vacuum kit can be secured to the edge of the working table using c-clamps or screws.

## TAPE DISPENSER >

### BC99



- > The dispenser wheel positioning of the edge band roll can be adjusted.

## DUAL END CUTTER >

### TK65



- > A unique two-point support design ensures perfectly connected and aligned cuts.
- > Ergonomic design handle bar.
- > Adjustable cutting line compensation design ensures precise end-to-end cuts.
- > The frame maybe opened to measure perpendicular and uniform end cuts.

## GUIDE COMPONENT KIT >

### ST97



- > Assists with keeping workpiece on level plane while straightline edgebanding or trimming.
- > Floating adjustment device to enhance more precise straightline trimming.

## DOUBLE-SIDED TRIMMING KIT >

### ST88



- > Suitable for width from 10 – 65mm edging.
- > Straight-line floating suspension design provides precise trimming result.