

FORMAT 4®

exact 63

630 mm

THICKNESSING WIDTH
MEETS EVERY
REQUIREMENT

FORMAT 4[®]



exact 63 630 mm thickening width meets every requirement!



Whether in a carpenter's workshop, in workshops where solid wood is machined, or in the field of modern furniture production – the performance of the new Format4 exact 63 thicknesser is astounding in all areas. Maximum performance, simple operation and individual machine options, all available at a low investment cost, guarantee perfect planing results for every requirement.

The Format4 thicknesser exact 63 offers a choice of 4 different cutting systems:

- » 4 knife Format System cutter-block
- » 4 knife TERSA cutter-block
- » Silent-Power® Spiral cutterblock

exact 63

- » Planing width: 510 mm
- » Cutterblock: self-aligning planer knives; Silent-Power® Spiral Blade Cutterblock (optional)
- » Thickening table length: 1,050 mm (1,650 mm)
- » Max. depth of cut: 10 mm
- » Thickening height 3–300 mm
- » Variable feed speed adjustment 5–20 m/min

FORMAT4 Premium Machines for Premium Requirements

- » Constantly high performance in industrial continuous operation
- » Customer specific optimised production solutions
- » Solid design with premium components
- » Wide range of configuration packages with high-tech solutions
- » Complete engineering precision
- » Premium user comfort
- » Quality and precision from AUSTRIA
- » Uncompromising productivity
- » Perfect service package before, during and after the purchase
- » Tailor made financing solutions
- » Mechanical engineering experience since 1956

The most important highlights at a glance



FORMAT4 Highlight

Silent-Power®

Exclusive for planer thicknessers from the Felder Group. The Silent-Power® spiral blade cutterblock cuts noise levels during planing by well over half and provides a continuous pulling cut for tear-free planing patterns in any type of wood. With this revolutionary new development from Format4 you are obtaining all of the advantages of a spiral blade cutterblock at considerably lower operating, investment and adjustment costs. The benefits of the Silent-Power® spiral blade cutterblock at a glance:

- » Sensationally quiet, noise is reduced by 50%!
- » Blade life up to 20 times longer
- » Four highly precise cutting edges on each knife
- » Optimised chip extraction and reduced chip volume
- » Tear-free planing results
- » Reduced power consumption when compared to similar systems



FORMAT4 Highlight

"Digi-Drive"

Enter the thickness required, press Start and the thickening bed adjusts exactly to the desired position. LED displays for the required and actual values. Additional functions: incremental adjustment, 4 programmable thickening table positions.



FORMAT4 Highlight

Feeder device

Variable feed speed of between 5–20 m/min. Whether its a perfect finish or quick thickness calibration that is required, the correct feed speed can always be set to match.

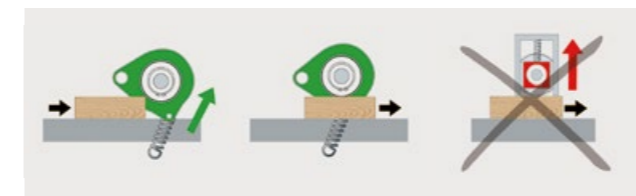
FORMAT 4®

Details



Change the blades in record time

4-knife system cutterblock, knife change in less than two minutes, self-aligning knives resulting in high accuracy when changing blades, no resin build-up on clamping screws. Positive locking ensures ultra-smooth operation, maximum blade life, savings thanks to economical blade price.



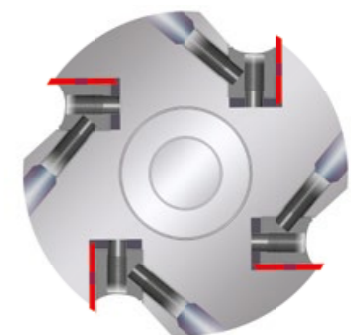
Infeed rollers

The infeed rollers are suspended which allows them to lift gently when processing with a large depth of cut.



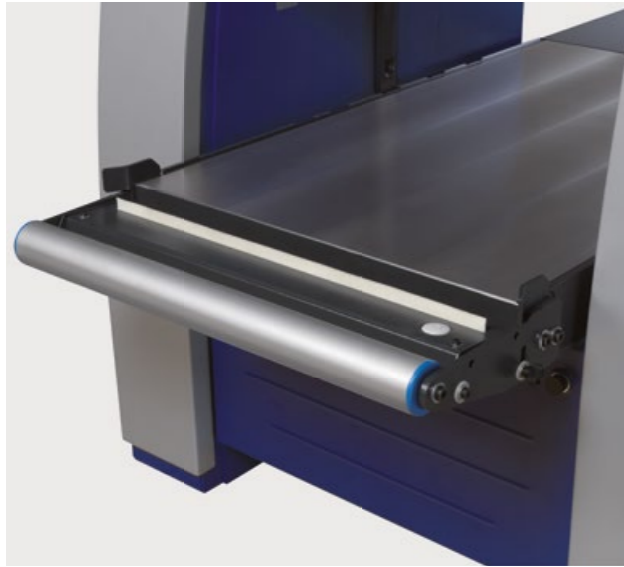
Power-Drive

Turn knob for quick adjustments, push button for fine adjustments. The LED display shows the actual values.



Thickness planing with 4-knife system cutterblock

The thicknesser equipped with the Format4 system cutterblock, a 120 mm cutting circle and 4 blades, offers performance, precision and operating comfort all in one.



Support roller

For those customers that regularly process wet or resinous wood, we would recommend the option of the workpiece roller and lubrication unit on the infeed side of the machine.

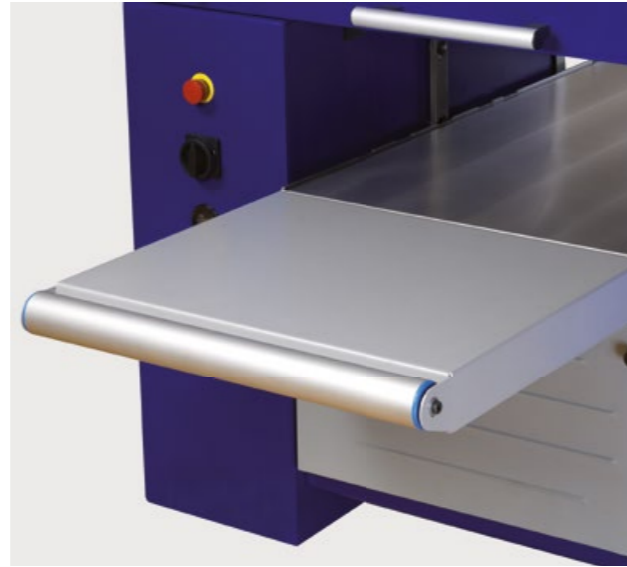
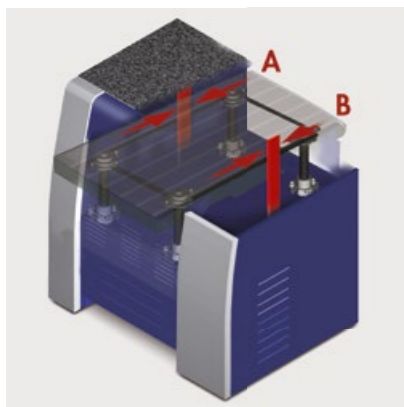


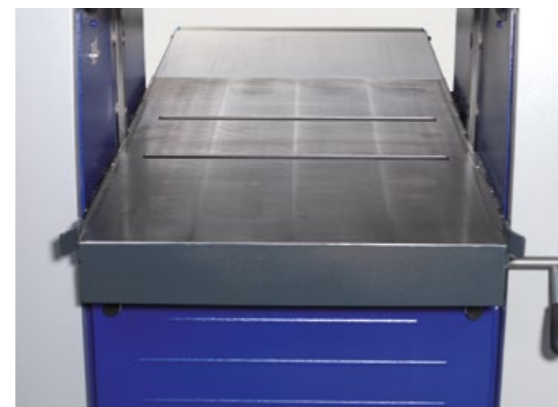
Table extension

Increased comfort: Stable table extensions with workpiece roller on the outfeed side.



Outstanding stability and long-lasting precision

Four trapezoidal support spindles ensure utmost precision and high load bearing capacity. Vertical guides integrated into the side of the machine chassis absorb the resulting outfeed side pressure and guide the thickening table into position with an accuracy of a tenth of a millimetre.



Adjustable integrated bed rollers

Optional integrated adjustable bed rollers are available for processing workpieces with high resin or moisture content.



Scissor lifting table

On request, the thickening table can be extended by 1,150 mm with a scissor lifting table.

Technical specifications

Electrics

	exact 63	
001	3x 400 V motor voltage	S
002	3x 230 V motor voltage	W
004	50 Hz motor frequency	S
005	60 Hz motor frequency	W
007	7.35 kW motor (10 HP) S6/40%	S
008	10 kW motor (13.5 HP) S6/40%	O
009	15 kW motor (20 HP) S6/40% (#001)	O
10	STAR-delta-START	S
12	Switch contact for the control of an extractor	O
13	Operating hour meter	O

Cutterblock

39	4-knife system cutterblock (blade length 635 mm)	S
41	4-knife TERSA/MBM system cutterblock (blade length 635 mm)	O
44	Silent-Power spiral cutterblock	O
-	5,000 rpm rotation speed	S
-	Number of knives – Silent-POWER spiral cutterblock	95
-	Cutterblock diameter in mm	120

Thickener and feed gears;

211	630 mm thickener table workpiece roller on the infeed side (I58)	O
53	Electric height adjustment for thickening table ("Power-Drive" D1)	S
55	Electronic digital display for the thickening table adjustment	S
57	Variable speed 5–20 m/min	S
58	Automatic lubricant application at the infeed of the thickening table with workpiece roller on the infeed side	O
59	2 adjustable rollers under the thickening table, adjustment range 0–0.5 mm	O
60	Option to preselect "Digi-Drive" D1 dimensions for position control of the thickener table height	O
61	Rubber infeed roller Ø 85 mm (#63)	O
62	Steel segmented infeed roller, spiral toothed	O
63	Rubber outfeed roller Ø 85 mm	O
64	Second steel outfeed roller, micro teeth Ø 85 mm (I63)	O
65	Second rubber coated outfeed roller Ø 85 mm (#63)	O
-	Steel outfeed roller, micro teeth Ø 85 mm	S
-	Thickening width in mm	630
-	Min.-max. thickening height in mm	3–300
-	Thickening table size in mm	630 X 1,050
-	Steel segmented infeed roller, spiral toothed Ø 85 mm	S
-	Spring-loaded pressure bar on the outfeed	S
-	Segmented pressure beam at the infeed	S
-	Min. workpiece length in mm	270
-	Maximum depth of cut in mm	10

Important accessories

exact 63

223	(2x 440-104) – Coupling system for table extension with F-coupling (on the outfeed side)	○
224	Table extension with workpiece roller for the thicknesser table (630 x 570 mm)	○
225	The scissor lifting table to be mounted on the thicknesser table	○

General

-	Extraction connection Ø in mm (mountable left or right)	160
-	Weight kg (with standard configuration)	1.050

Packaging

222	IPPC packaging	○
-----	----------------	---

Transport

221	Container packaging	○
-----	---------------------	---

FORMAT 4®

Product range

Sliding Table Panel Saws



Shapers



Planer



Edgebanders



Wide Belt Sanding Machines



Heated Veneer Presses



HVP heated veneer press
With Elkom® electric heating platens with warm water heating with thermal oil heating connection to an existing heating system

CNC machining centres



Nesting-CNC Machining Centres



Industrial Panel Saws



Vacuum panel lifter Return systems Feeding Units



FORMAT 4®

FORMAT4 Uncompromising expertise for the highest of requirements

The Felder Group premium brand has met the highest standards of professional users since 2001. The customised high-performance solutions are uncompromisingly innovative, offer maximum operating comfort and complete productivity.

FELDER GROUP

KR-Felder-Straße 1
A-6060 HALL in Tirol

🇬🇧 Tel. 01908 635000
www.format-4.uk
[Contact](#)

🇮🇪 Tel. 0906625756
www.format-4.ie
[Contact](#)

🇮🇳 Tel. 1800 274 3040
www.format-4.in
[Contact](#)

🌐 Tel. +43 5223 58500
www.format-4.int
[Contact](#)