



FRIULMAC

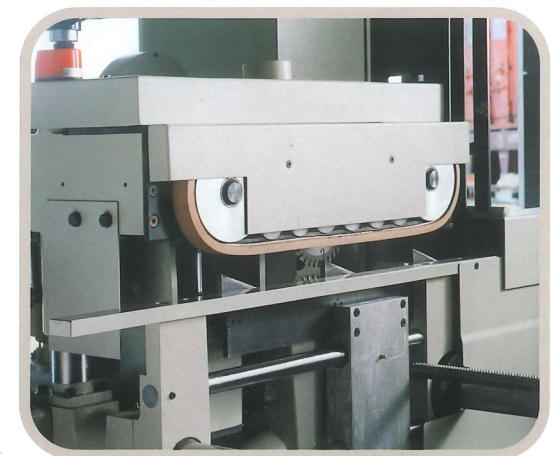
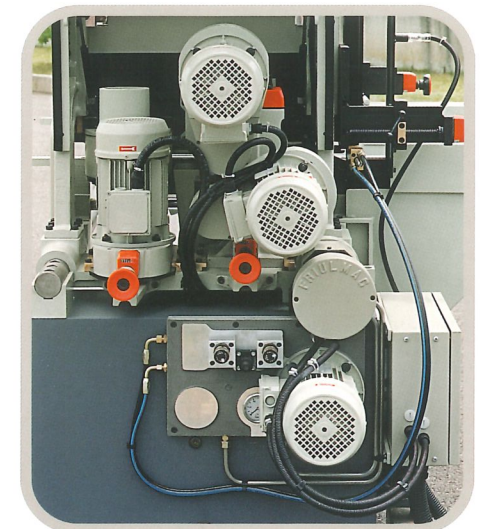
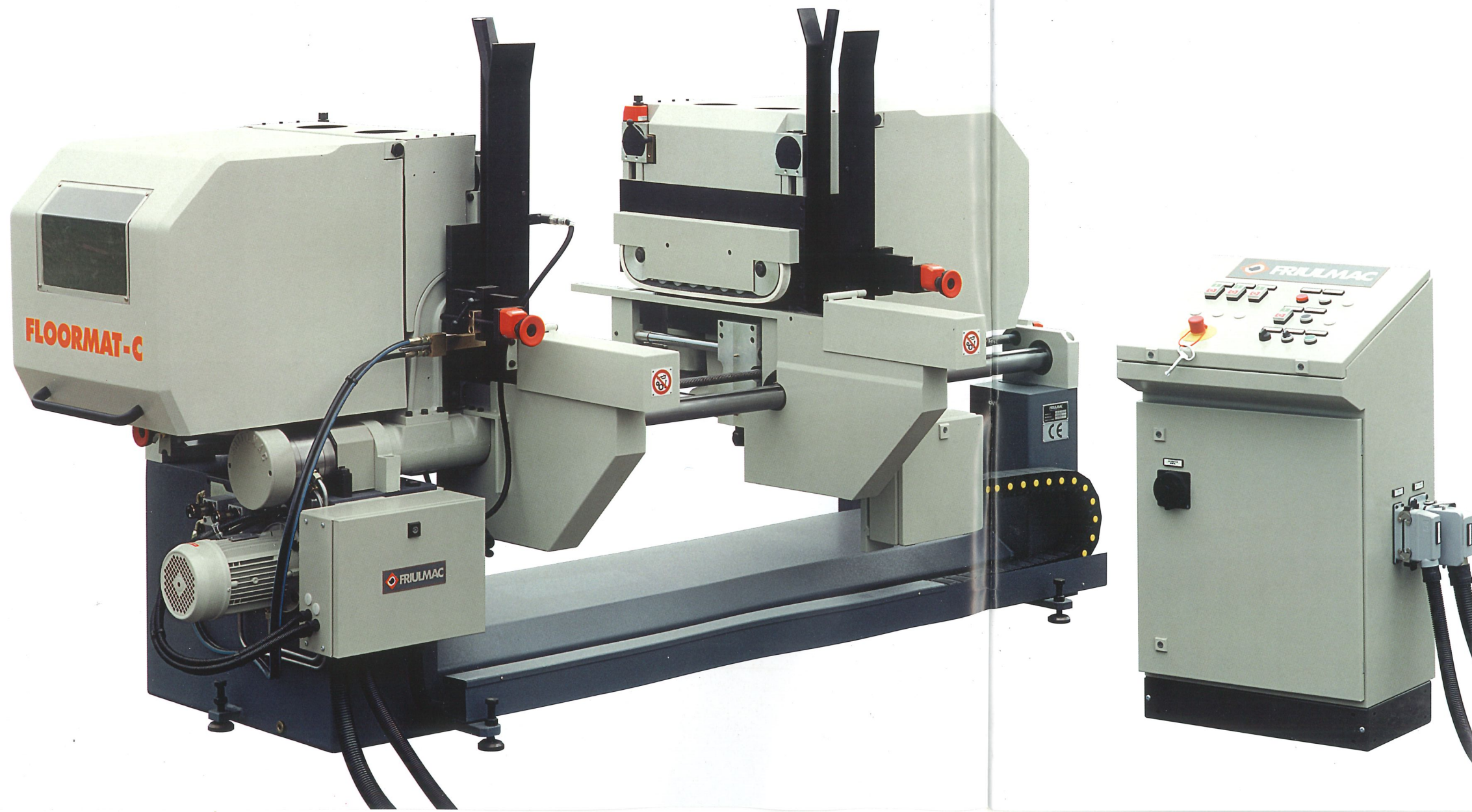
FLOORMAT-RANDOMAT



The end cut profiling
machines for wood
flooring from A to Z.

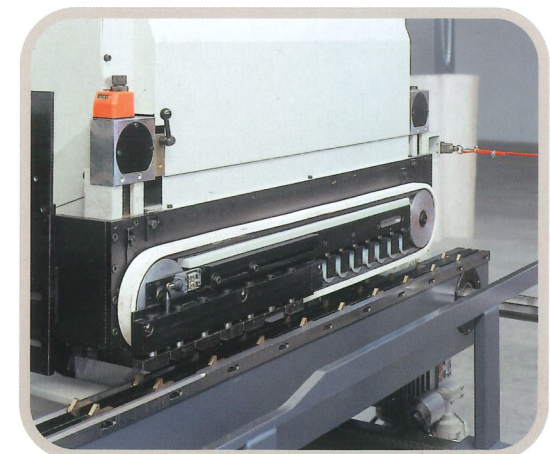
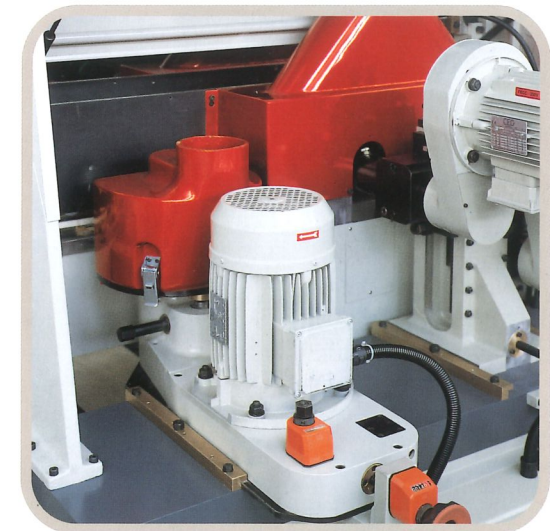
Is the most user-friendly end cut profiling machine.

This compact machine increases the production capacity right away. It does a tremendous amount of work. With a unique hydraulic drive it can accelerate up to 50 pieces/min. The FLOORMAT/C, used as an independent unit or in line with any moulder, becomes a specialised, quick set-up machine, very efficient for small and also large batch production. Just right for today's "just-in-time,, market.



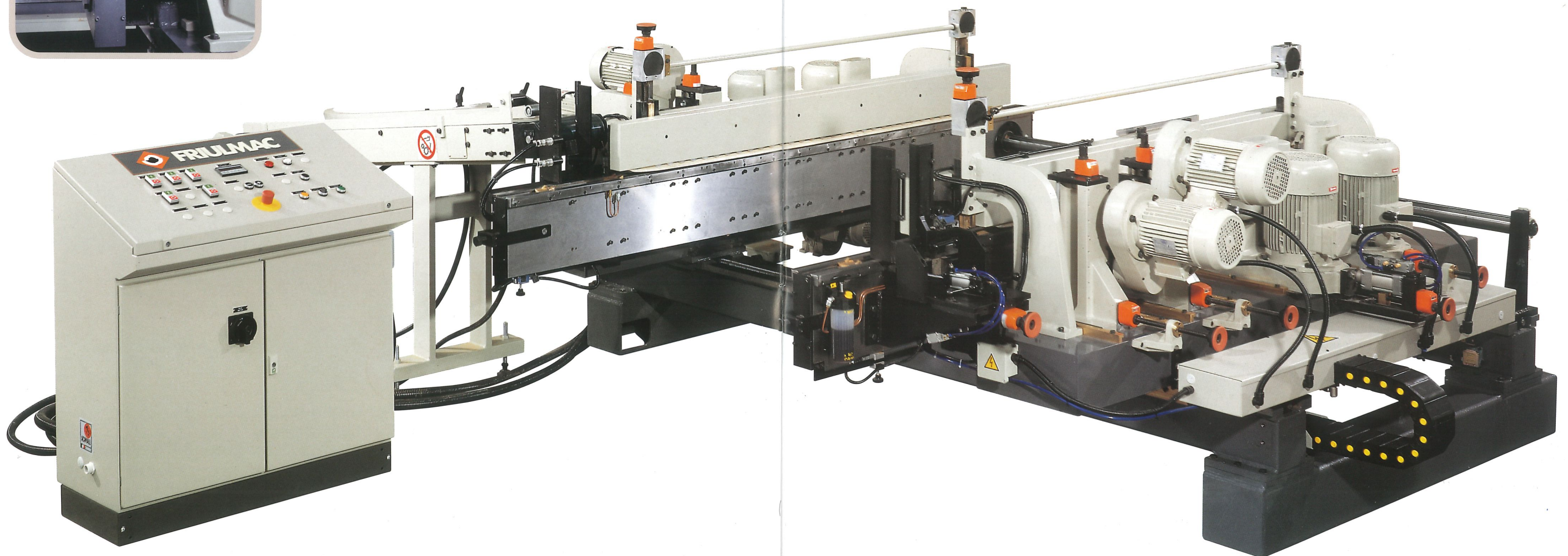
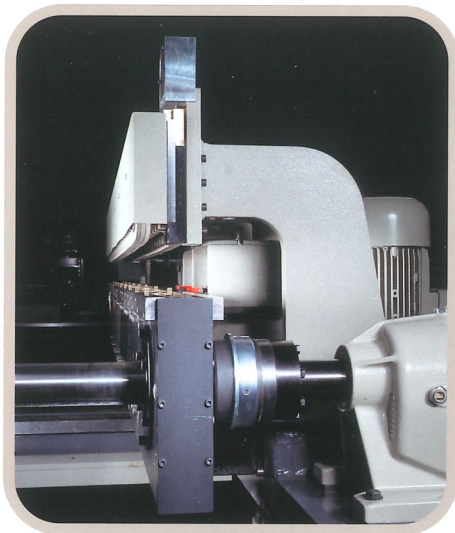
The high speed end cut
profiling machine for all
your needs.

This new generation is better than ever. Our through feed system is virtually maintenance-free and extremely powerful through its full speed range. A maximum of 120 pieces/min can be achieved. Powerful in large and small runs, strong in multiple shift operation. In a short period of time it turns a stack of wood into first-class products.



The most powerful series
of end cut profiling
machines.

The heavy duty base can cover up to 5 work stations on each side.
The high precision spindles assures an accuracy within some
hundredths of millimetres. By selecting the appropriate sequence of
work stations the FLOORMAT/S is the ideal machine to process
laminated-, 2- or 3 layer-, lacquered- or unlacquered components.
The FLOORMAT/S can also be equipped with Friulmac handling
equipment, eliminating long set-up times and maximizing the
advantage of high speed production.



FLOORMAT

Technical data.

FLOORMAT/C

Workpieces length	160-1,300 mm	
Workpieces width	30-140 mm	
Workpieces thickness	10-35 mm	
Feed motor	2.2 Kw hydraulically driven	
Spindle motors	Scoring unit	2.2 Kw - 7,600 rpm
	Trimming unit	2.2 Kw - 7,600 rpm
	Scribing unit	2.2 Kw - 7,600 rpm
Spindle diameter	30 mm	
Tool cutting circle	Scoring unit	125-150 mm
	Trimming unit	125-180 mm
	Scribing unit	120-160 mm
Capacity	50 pcs/min (variable-depending on timber dimension and machine composition)	
Voltage	400 V / 50 Hz	

FLOORMAT/E

Workpieces length	195-1,000 mm	
Workpieces width	30-250 mm (30-200 mm with No. 005/ 70-200 mm with No. 006)	
Workpieces thickness	8-35 mm	
Feed motor	2.2 Kw electrical-hydraulically driven	
Feed speed	0-18 m/min	
Spindle motors	Scoring unit	2.2 Kw - 7,600 rpm
	Trimming unit	2.2 Kw - 7,600 rpm
	Scribing unit	2.2 Kw - 7,000 rpm
	Profiling jumping unit	3.0 Kw - 7,000 rpm
	Scoring/trimming unit	30 mm
Spindle diameter	Scoring/trimming unit	30 mm
	Scribing/profiling unit	40 mm
Tool cutting circle	Scoring unit	125-180 mm
	Trimming unit	125-180 mm
	Scribing/profiling unit	160-220 mm
Capacity	120 pcs/min (variable-depending on timber dimension and machine composition)	
Voltage	400 V / 50 Hz	

FLOORMAT/S

Workpieces length	250-1,500 mm	
Workpieces width	40-250 mm	
Workpieces thickness	7-35 mm	
Feed motor	3.0 Kw hydraulically driven	
Feed speed	0-22 m/min	
Spindle motors	Scoring unit	2.2 Kw - 7,600 rpm
	Trimming unit	2.2 Kw - 7,600 rpm
	Scribing unit	3.0 Kw - 7,000 rpm
	Profiling jumping unit	3.0 Kw - 7,000 rpm
	Scoring/trimming unit	30 mm
Spindle diameter	Scoring/trimming unit	30 mm
	Scribing/profiling unit	40 mm
Tool cutting circle	Scoring unit	125-180 mm
	Trimming unit	125-180 mm
	Scribing/profiling unit	160-220 mm
Capacity	70 pcs/min (variable-depending on timber dimension and machine composition)	
Voltage	400 V / 50 Hz	

Statements and illustrations in this brochure may include optional equipment.

As our policy is to constantly improve design, the details given in this leaflet should not be regarded as binding.

Great standard features.

FLOORMAT/C

FLOORMAT/E

FLOORMAT/S

001



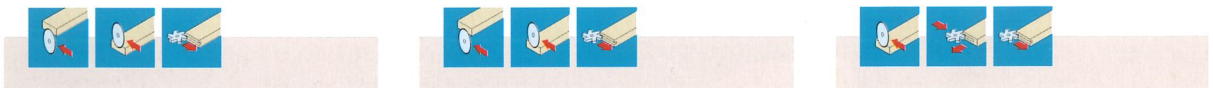
002



003



004



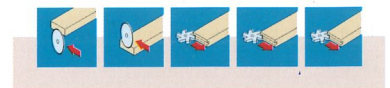
005



006

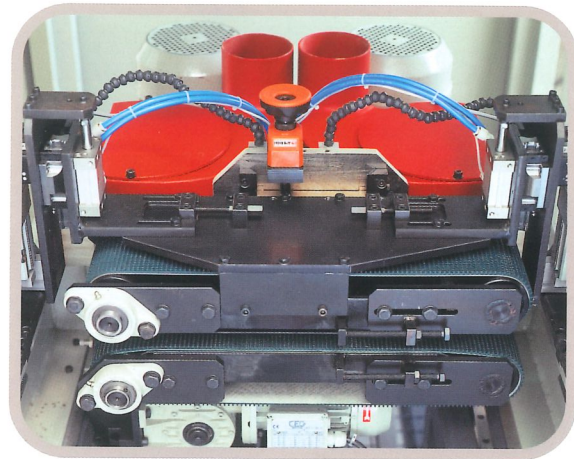


007



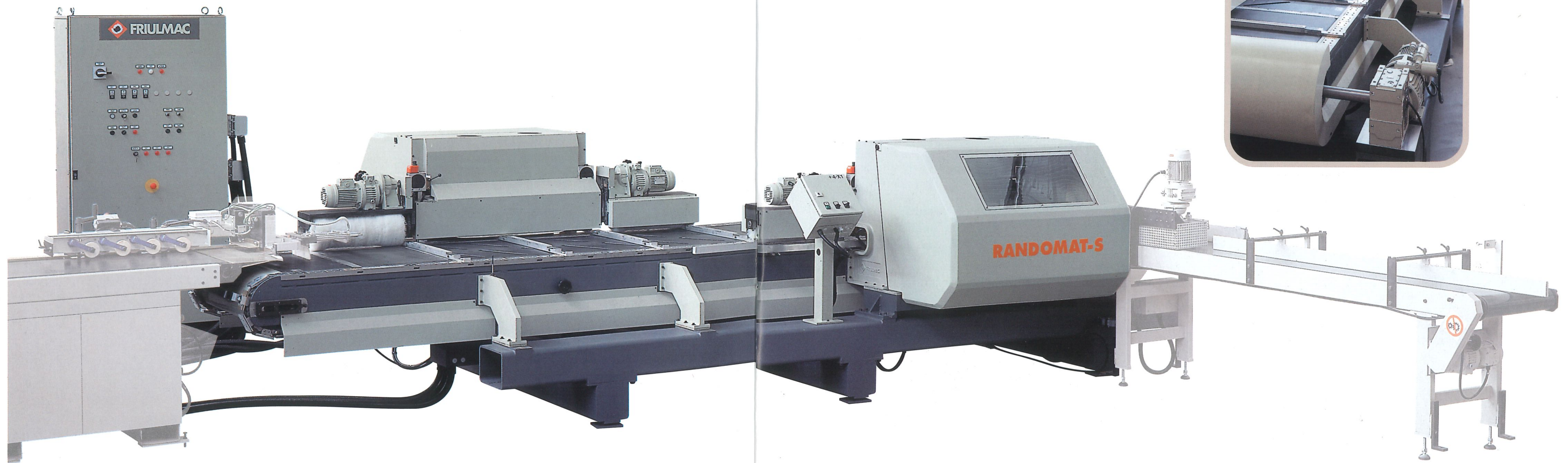
...and the target is reached!

No more waste of time, low productivity and poor finish quality; a moderate investment in modern technology guarantees you profitability and safety in the end cut profiling on random length elements.



The most versatile among
the end processing
machines.

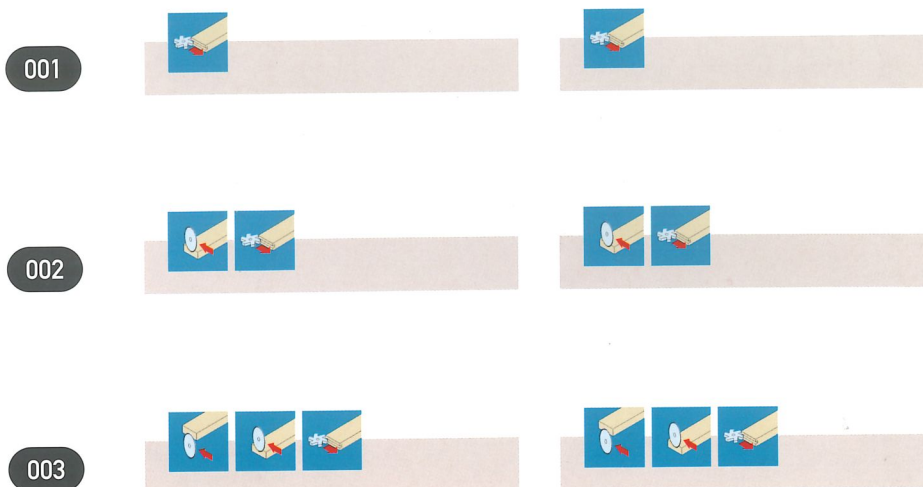
Modern design, operating speed, extreme precision, really short setting-up time: this is what you always demand for your machine investment. This is what Friulmac guarantees in supplying you a RANDOMAT/S, "the evolution of the species" in end-processing machines for random lengths material.



Technical data.

Workpieces length	250-2.000 mm	
Workpieces width	30-250 mm	
Workpieces thickness	10-30 mm	
Feed Motor	Infeed and outfeed belts	0.37 Kw each
	Positioning	0.75 Kw each
Scoring and trimming electro-spindle power	1.1 Kw	
Profiling spindle motor	3.0 Kw	
Profiling spindle diameter	40 mm	
Tool diameter	Scoring-Trimming units	150 mm
	Profiling unit	200 mm
Infeed belts	3,300 mm	
Outfeed belts	3,300 mm	
Capacity	12 pcs/min (variable-depending on timber dimension)	
Voltage	400 V / 50 Hz	

Great standard features.

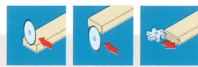


Technical data.

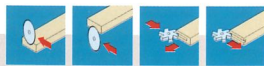
Workpieces length	500-3.000 mm	
Workpieces width	50-250 mm (version 004) 50-200 mm (version 006)	
Workpieces thickness	12-35 mm	
Feed motor	3.0 Kw	
Feeding speed	0-27 m/min	
Spindle motor power	Scoring unit	2.2 Kw - 7,600 rpm
	Trimming unit	2.2 Kw - 7,600 rpm
	Profiling unit	3.0 Kw - 7,000 rpm
	Profiling jump unit	3.0 Kw - 7,000 rpm
Spindle diameter	Scoring-Trimming unit	30 mm
	Profiling unit	40 mm
Tool diameter	Scoring-Trimming unit	125-180 mm
	Profiling unit	160-250 mm
Capacity	max. 55 pcs/min (variable-depending on timber dimension and machine composition)	
Voltage	400V / 50 Hz	

Great standard features.

004



006



Useful extras.



SAFETY AND POWER with the adjustable speed motor with hydraulic friction.



PNEUMATIC UPPER-PRESSURE to guarantee the maximum precision during the profiling phase.



QUICK TOOL CHANGE SYSTEM to reduce the machine setting time and to increase the output capacity.



DIGITAL READ-OUT that guarantees the adjustments with centesimal tolerance.

Nonstop manufacture.

MECHANIZATIONS

A variety of products demands a variety of solutions which we can offer. According to the level of automation and capacity of the planer/moulder and DET, there are semiautomatic, as well as fully automatic lines available. Various units are available for both lengthwise and crosswise transportation of raw material and even finished products. Special attention has been given to the design.



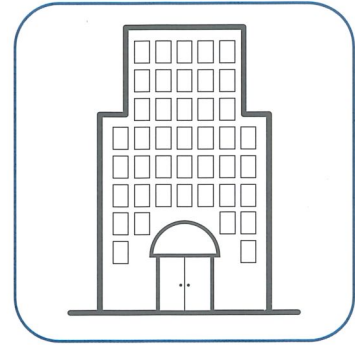
Use possibilities.



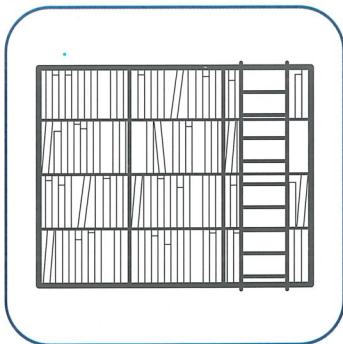
PRIVATE HOUSES. Halls, living areas, kitchens, etc.



DEPARTMENT STORES. Shops in general, boutiques, hairdresser salons and shops, restaurants, etc.



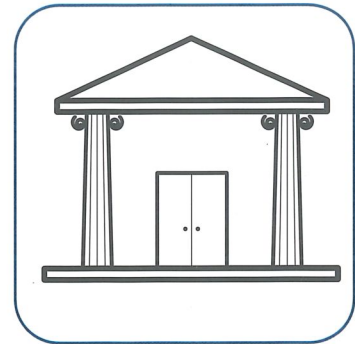
HOTELS. Halls, reception areas, waiting rooms, corridors, etc.



ADMINISTRATIVE BUILDINGS. Offices, conference rooms, libraries, etc.



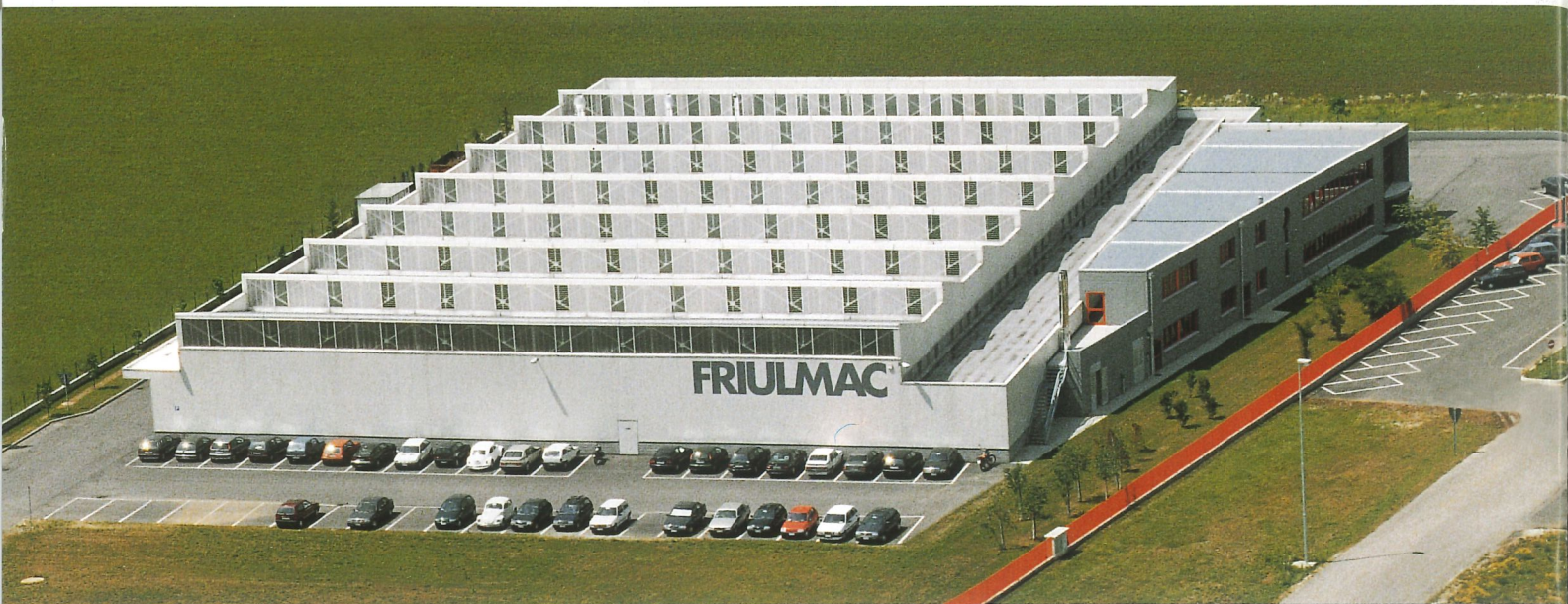
SCHOOL BUILDINGS. Classrooms, libraries, recreational rooms, kindergartens, etc.



PUBLIC BUILDINGS. Ballrooms, theatres, museums, gymnasiums, etc.

Success factors of parquet floorings.

- _ EASY TO CLEAN
- _ COMFORTABLE AREAS
- _ WARM AMBIENCE
- _ HIGHLY ECOLOGICAL
- _ RECYCLABLE
- _ IDEAL FOR PEOPLE THAT SUFFER FROM ALLERGIES
- _ HIGH RESISTANCE
- _ RAW MATERIALS IN CONTINUOUS GROWTH
- _ MANY DIFFERENT DESIGNS
- _ POSSIBILITY TO EFFECT SEVERAL SMOOTHING OPERATIONS
- _ EASY TO SET



You are always welcome at Friulmac.

Please call to make arrangements for a personalized visit. We would like to set aside time for you.

Udine, in the Friuli-Venezia Giulia province of Italy, is known to be the center of European chair production.

The know-how in solid wood processing is concentrated at Friulmac and its related companies.

You will experience how the world's bestselling DET and Machine Centers are designed, produced and assembled.



HEAD OFFICE

FRIULMAC Spa
Via delle Industrie - Z.I.U.
33050 Pavia di Udine
(UD) Italy
Phone +39 0432 655007 r.a.
Fax +39 0432 655107
www.friulmac.it
friulmac@friulmac.it

SALES AND SERVICE FOR NORTH AMERICA

FRIULMAC Inc.
1264 25th Street Place S.E.
Hickory, N.C. 28601 - USA
Phone 828/327-6265
Fax 828/327-6273
Toll free number 1 800 282-1690
www.friulmacusa.com
friulmac@aol.com

SALES AND SERVICE FOR ASIA/PACIFIC

FRIULMAC PACIFIC SDN. BHD.
Block B, Unit B 901
Phileo Damansara II
Jalan 16/1, Off Jalan Damansara
46350 Petaling Jaya, Selangor - Malaysia
Phone +6-03-79534452 / +6-03-79541423
Fax +6-03-79534393
friulma@friulma.po.my