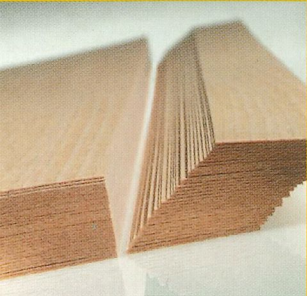
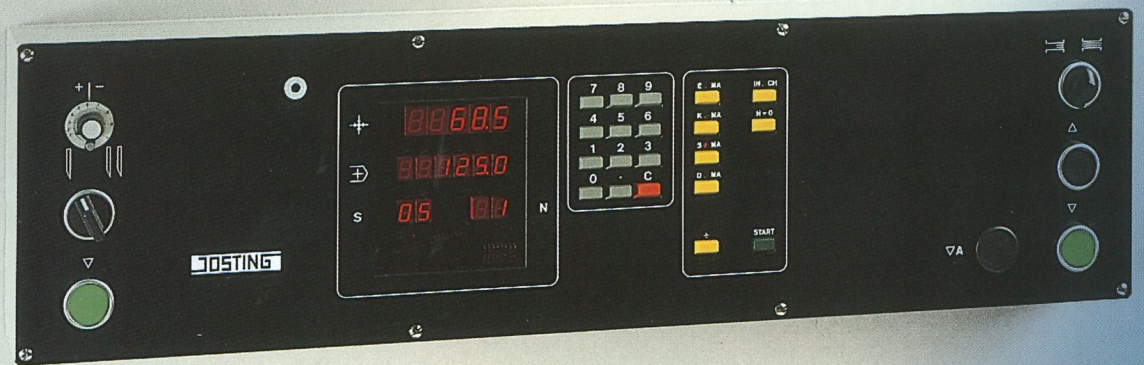


# KUPER EFS

## System Josting



## Veneer Jointing Guillotine

D.B.P. and foreign patents

# KUPER



# The KUPER EFS

## System Josting

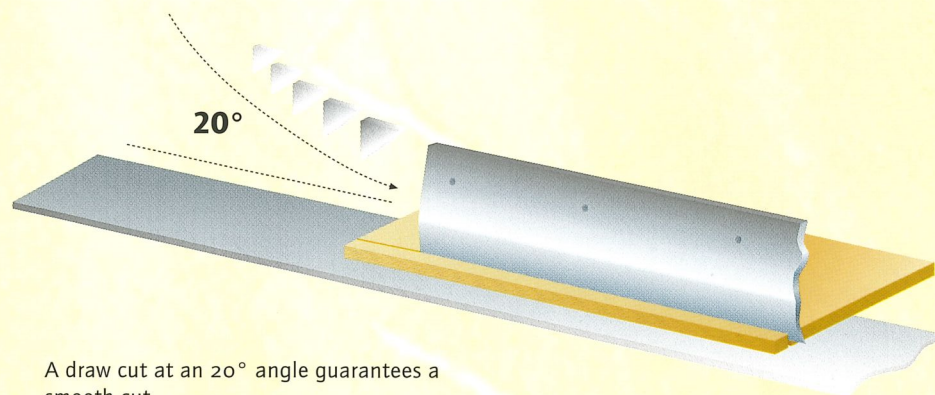
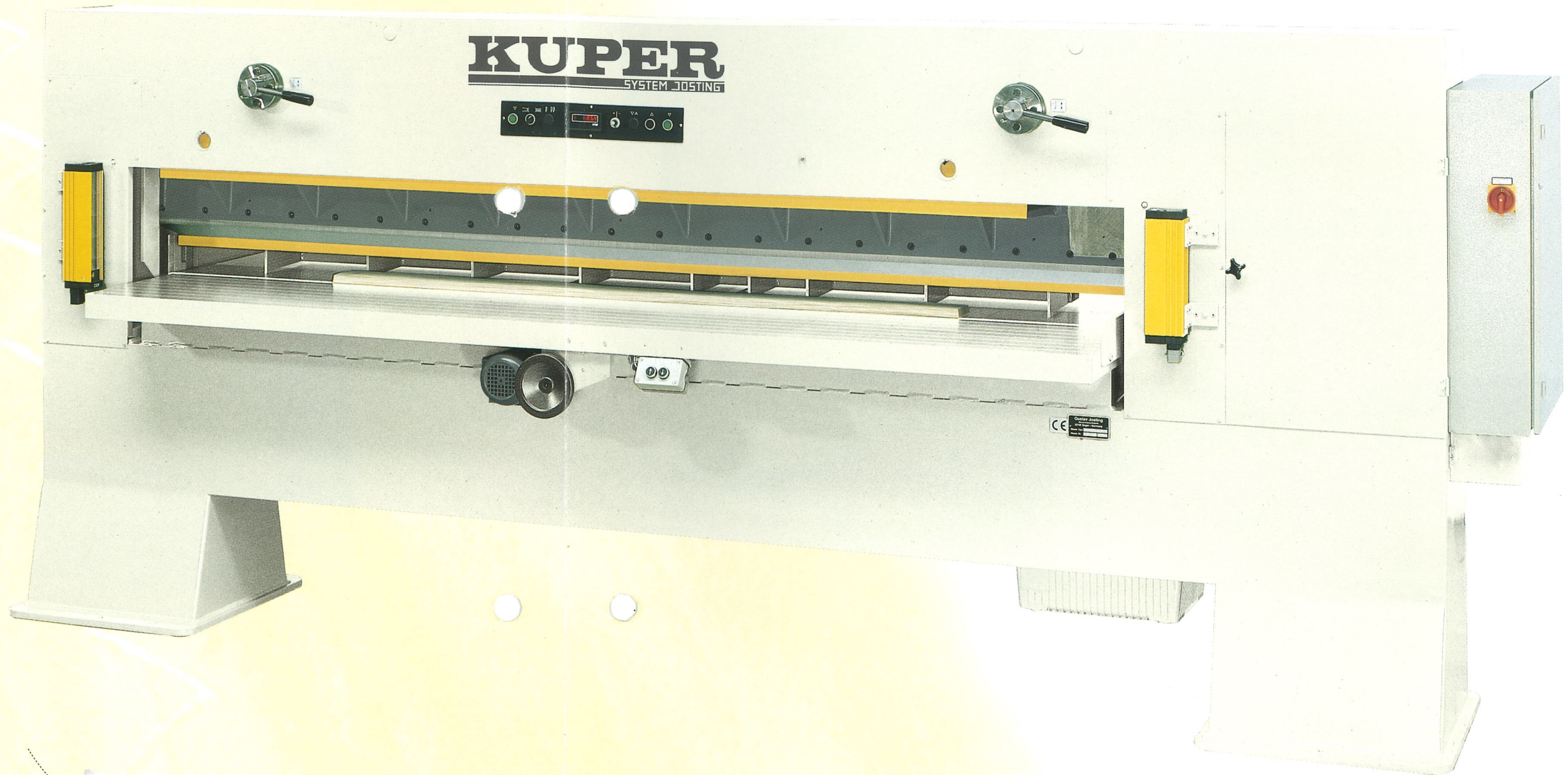
## Perfect Veneer-Cutting

### The Kuper EFS Veneer Jointing Guillotine.

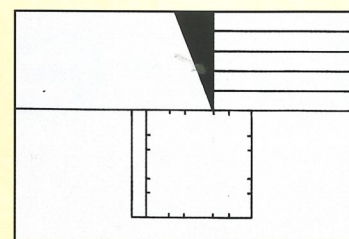
Straight and parallel cutting of the veneers is the efficiency "plus" of the machines type Kuper EFS 2300L - 4500 L. Maximum precision in cutting ensures the tight-joint splicing after the cut for all kinds of veneer.

### Exact positioning: Selection and digital gauge on a Display!

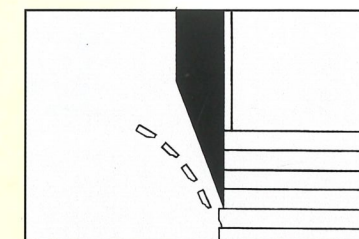
The positioning control for the parallel fence features a digital width gauge, a numeric keypad, a cut counter and pushbuttons for selecting the various operating modes. Single and incremental dimensions are adopted by the machine automatically when the start button is pressed. A total of 99 width dimensions can be saved in the memory. Changing over from mm to inch units is possible. Veneer edge lippings are cut by step-by-step adjustment of the parallel fence.



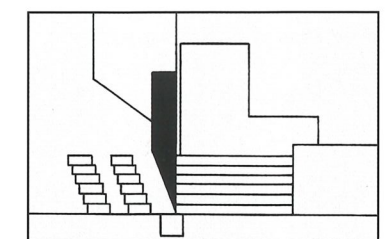
A draw cut at an 20° angle guarantees a smooth cut.



16 cutting points on the cutter counter gib



Finishing cut



Cutting of edge lippings

EFS System Josting





Positioning Control as optional equipment

## Technical data

Type	EFS 2300 L	EFS 2800 L	EFS 3200 L	EFS 3600 L	EFS 4200 L	EFS 4500 L
Cutting length	2300 mm	2800 mm	3230 mm	3600 mm	4200 mm	4500 mm
Insertion height	80 mm	80 mm	80 mm	80 mm	80 mm	80 mm
Parallel fence range	20-720 mm*	20-720 mm*	20-720 mm*	20-720 mm*	20-720 mm*	20-720 mm*
Pressure bar	Hydraulic cylinder, 2 pressure stages	Hydraulic cylinder, 2 pressure stages	Hydraulic cylinder, 2 pressure stages	Hydraulic cylinder, 2 pressure stages	Hydraulic cylinder, 2 pressure stages	Hydraulic cylinder, 2 pressure stages
Cutter bar	Brake motor, gearing, crank drive	Brake motor, gearing, crank drive	Brake motor, gearing, crank drive	Brake motor, gearing, crank drive	Brake motor, gearing, crank drive	Brake motor, gearing, crank drive
Parallel fence	Three-phase a.c. motor, positioning drive	Three-phase a.c. motor, positioning drive	Three-phase a.c. motor, positioning drive	Three-phase a.c. motor, positioning drive	Three-phase a.c. motor, positioning drive	Three-phase a.c. motor, positioning drive
Connected load	7.7 KW **	7.7 KW **	7.7 KW **	7.7 KW **	7.7 KW **	7.7 KW **
Floor space (with parallel fence)	364 x 170 cm	414 x 170 cm	457 x 170 cm	494 x 170 cm	554 x 170 cm	584 x 170 cm
Height	170 cm	170 cm	174 cm	174 cm	182 cm	182 cm
Net weight	3000 kg	3500 kg	3900 kg	4400 kg	5000 kg	5300 kg

\* upon request different range possible \*\* electric controls on left if request



# The advantages at only one glance.

**1. Cuts of highest quality:**

Cuts of highest quality thanks to the swinging and powerful drawing motion of the knife at an angle of approx. 20°.

**2. Exact parallel fence:**

Parallel fence with high-speed motordriven positioning, fine adjustment and digital gauge for cutting parallel face veneers and edge lippings.

**3. Visible marking of cutting line:**

Clearly visible marking of the cutting line by means of a green guide light.

**4. Easy alignment of veneer:**

Guide markings and an angular fence on the machine table for easier alignment of the veneer.

**5. Best processing of wavy veneer:**

Broad pressure bar for pressing even wavy veneer flat and level prior to cutting.

**6. Finishing cut facility:**

Finishing cut facility with hydraulic adjustment of the cutter bar by 0.9 mm. Pre-cutting and finish-cutting of the pressed veneer pack produces right-angled cut faces.

**7. Cutting veneer across the grain:**

Powerful crank drive enables the cutting of veneer across the grain.

**8. Heavy-duty construction:**

High pressing and cutting forces are reliably absorbed by the heavy-duty construction.

**9. High knife quality:**

Knife with 30 mm grinding allowance for longest possible use.

**10. Economical and low level of noise:**

Intermittent operation of the drives results in a low energy requirement and a low level of noise.

**11. More safety:**

Occupational safety regulations are met by a light barrier safety device, two-hand operation, electric safety control system and protective gratings at the rear.

**12. Flexible working range:**

The machine also cuts paper, foil, plastic and other materials.

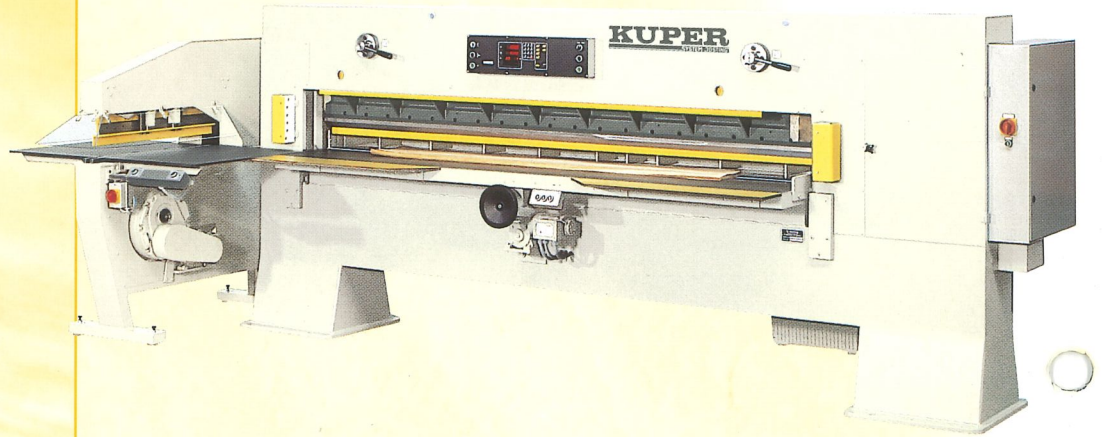
**13. Precise and permanent:**

Precise and permanent parallel guidance of machine components.

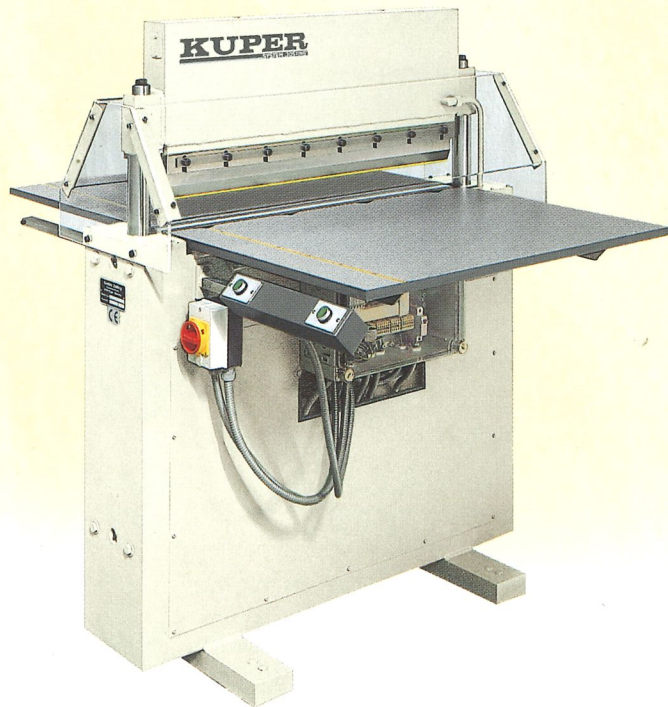


# KUPER. Precision and quality made in Germany.

An angle arrangement:  
EFS 2800 L + QFS 800 W



Cross-cutting Veneer  
Clipper QFS 850 for cutting  
to length of veneer packs



# KUPER

Heinrich KUPER GmbH & Co. KG  
Bruchstraße 13-19  
33397 Rietberg · Germany

Phone ++49(0)5244/984-0  
Fax ++49(0)5244/984-201  
E-Mail [export@KUPER.de](mailto:export@KUPER.de)  
Internet [www.KUPER.de](http://www.KUPER.de)

Subject to design modification.