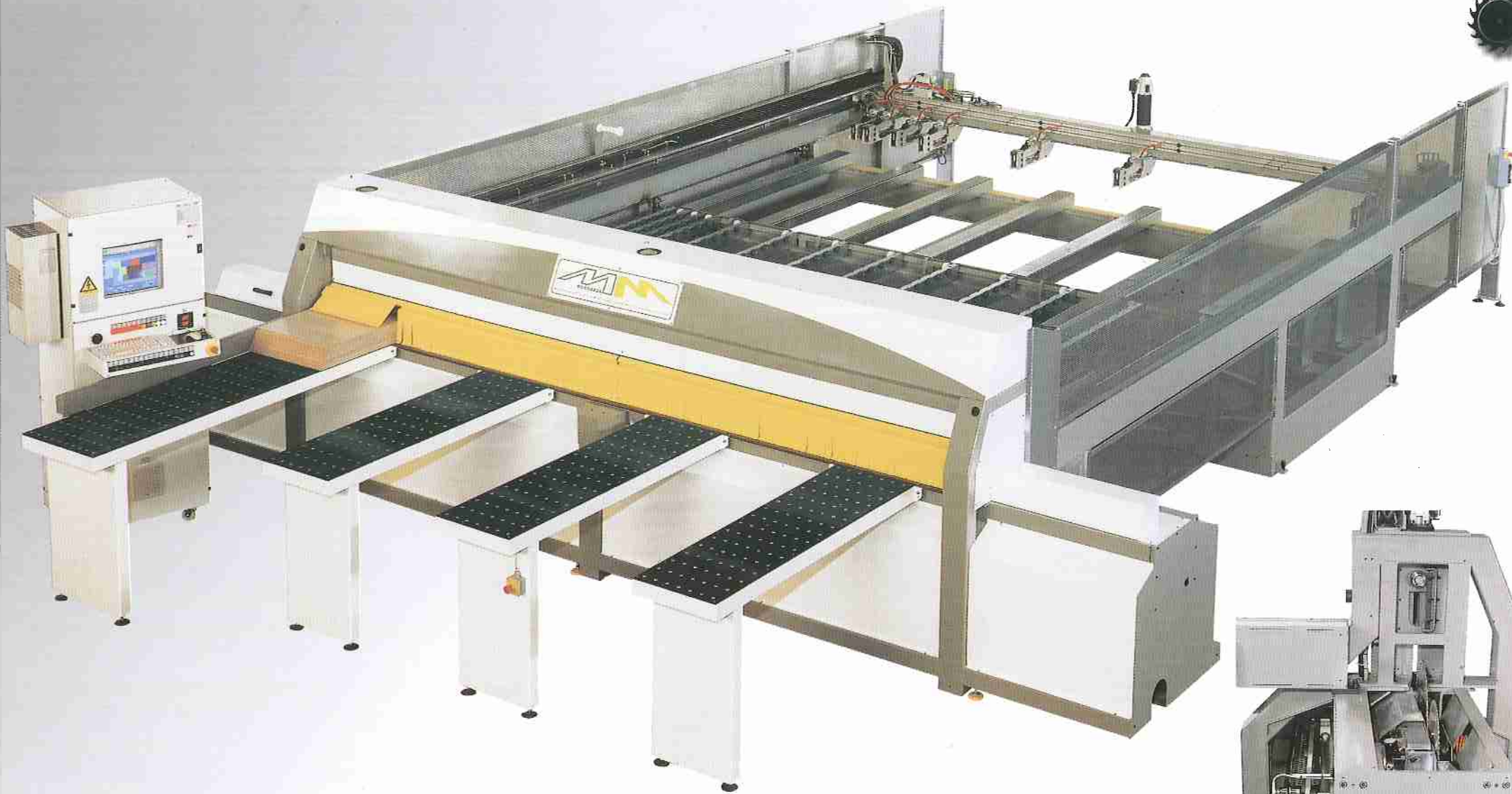


SEZIONATRICE
PANEL SAW
SCIE A
PANNEAUX
SECCIONADORA
PLATTENSÄGE

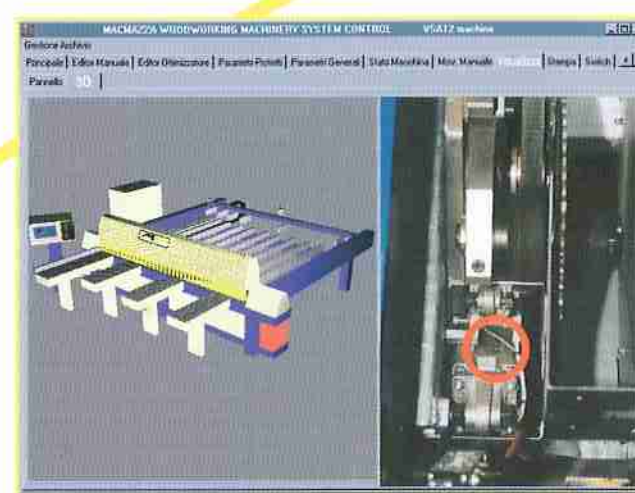
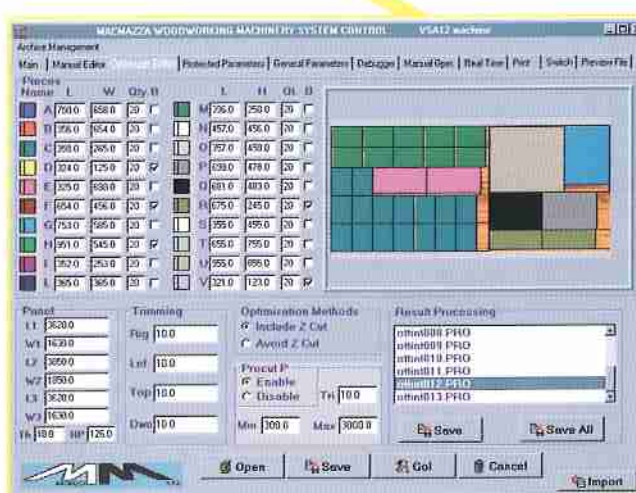
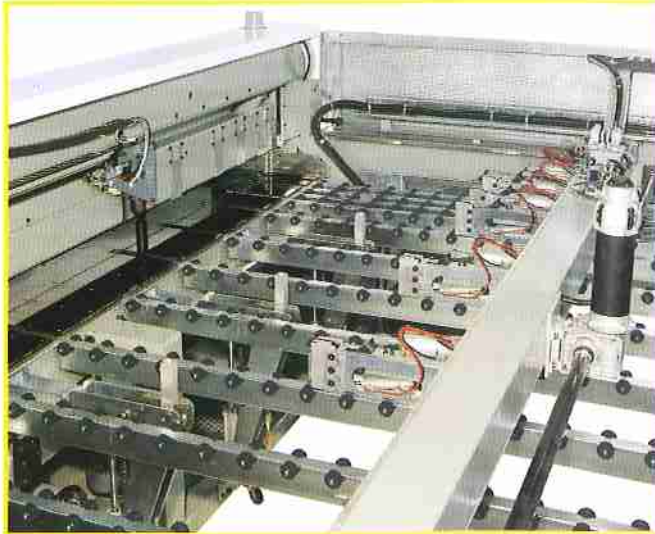
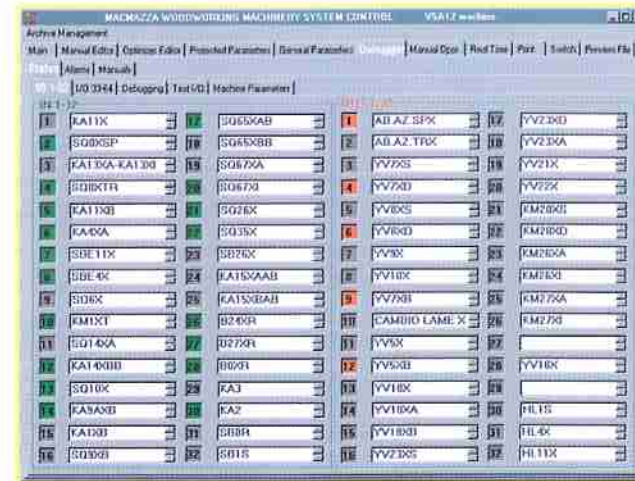
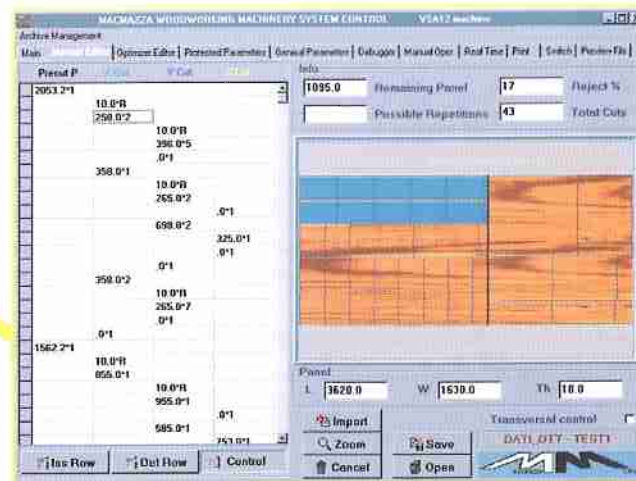
TOP SAW



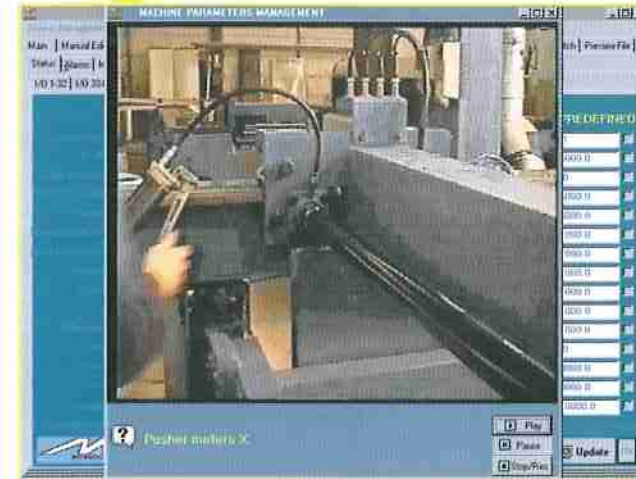
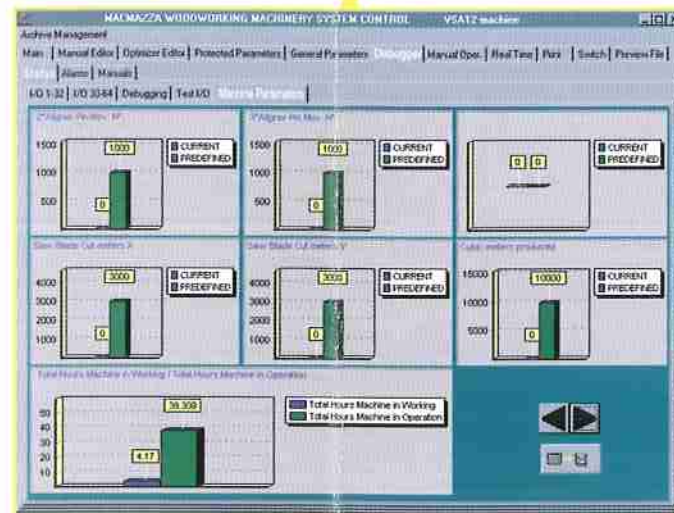
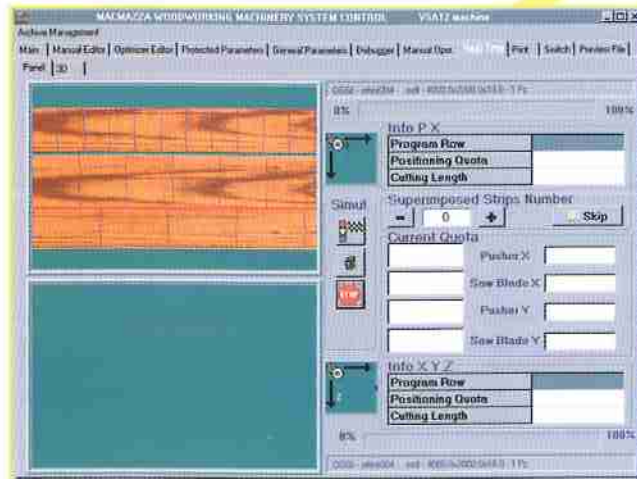
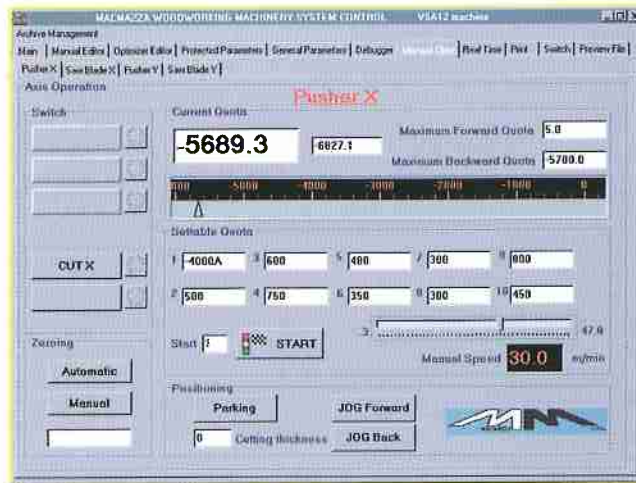
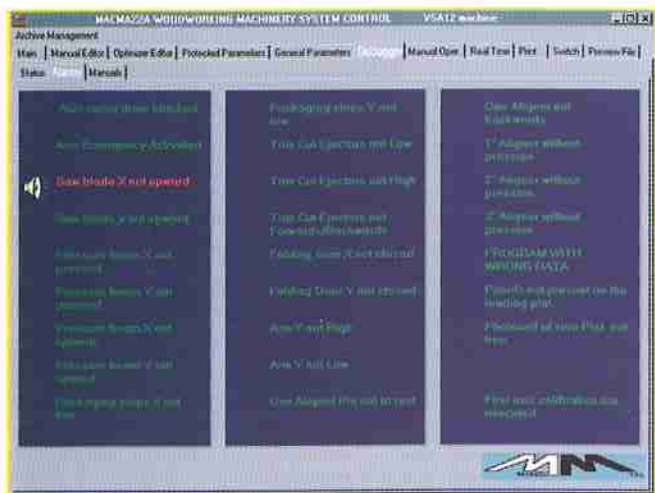
MACMAZZA
woodworking machinery

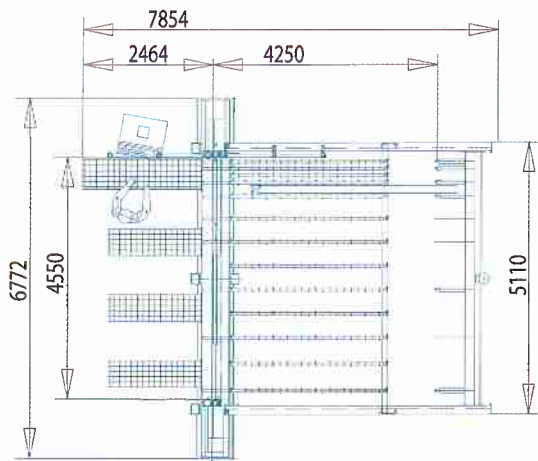
SEZIONATRICE
PANEL SAW
SCIE A
PANNEAUX
SECCIONADORA
PLATTENSÄGE

TOP SAW P

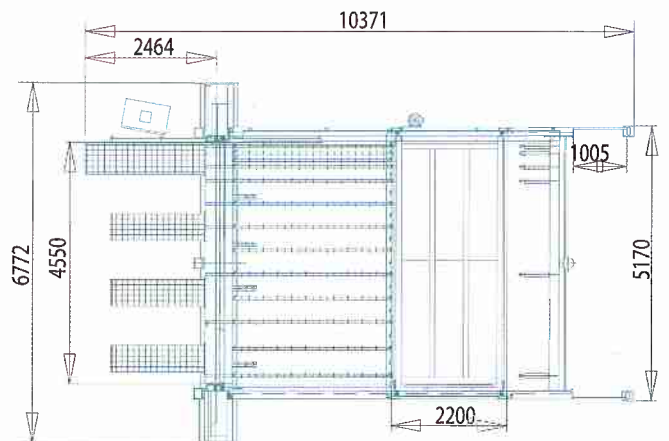



woodworking machinery
TOP SAW
 SEZIONATRICE
 PANEL SAW
 SCIE A PANNEAUX
 SECCIONADORA
 PLATTENSÄGE

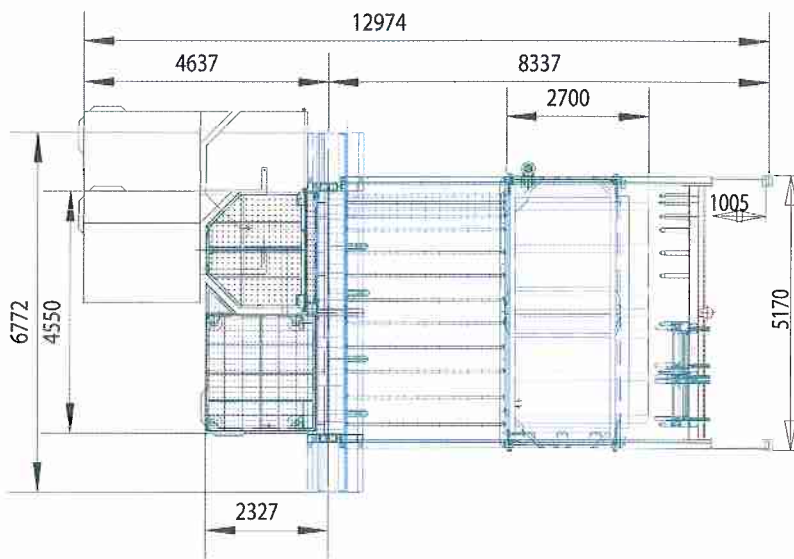




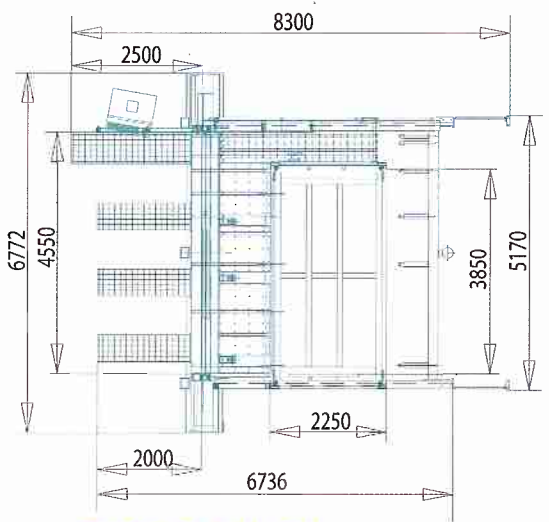
TOP SAW



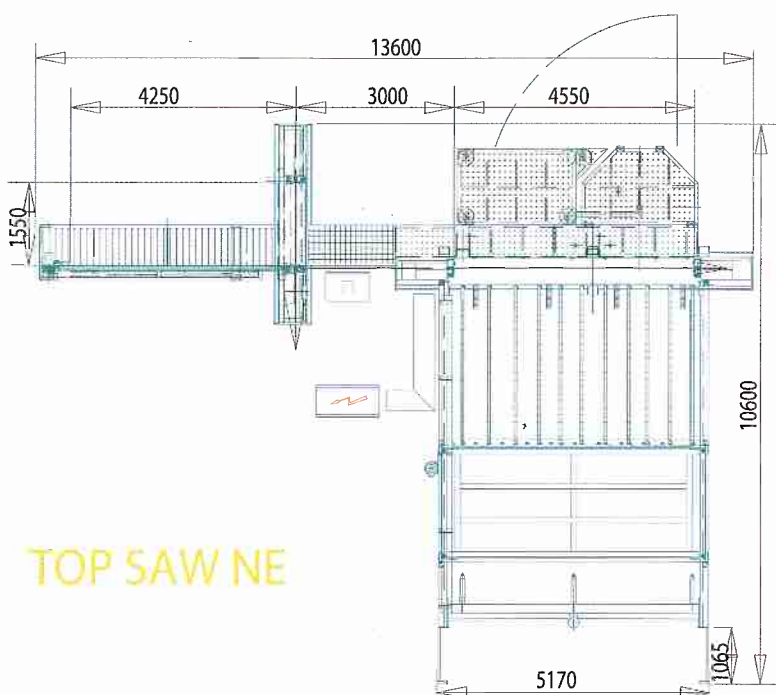
TOP SAW P



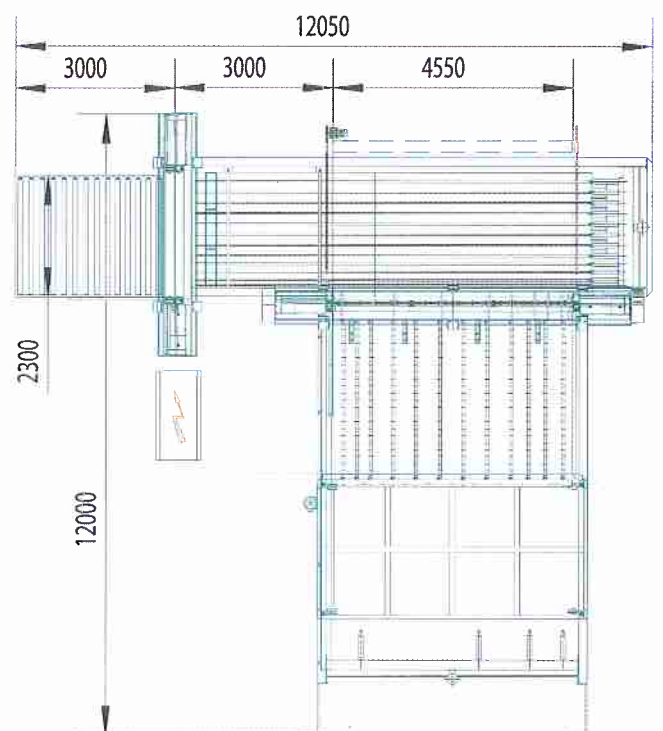
TSP SPECIAL



TOP SAW PI



TOP SAW NE



TOP SAW N

**SEZIONATRICI FLESSIBILI DA 30 ANNI CONTROLLATE
DA PERSONAL COMPUTER FIN DAL 1989
30 YEARS OF FLEXIBLE PANEL SAWS CONTROLLED
BY P.C. SINCE 1989**

**TOP SAW • A carico frontale / Front loaded
TS-P • A carico posteriore / Rear loaded
TS-PI • Modello compatto con piattaforma integrata
Space saving model with lift table inboard**

DATI TECNICI - SPECIFICATION - SPECIFICATIONS - DATOS TECNICOS - TECHNISCHE EIGENSCHAFTEN		
Lunghezza taglio Cutting length Longueur de coupe	Largueza corte Schnittlänge	3500 - 4500 - 5600 mm
Altezza taglio Cutting height Hauteur de coupe	Altura de corte Schnitthöhe	- Normal - Postforming 130 mm 80 mm
Motore lama principale Main blade motor Moteur lame principale	Motor sierra principal Motortärke Hauptsägeblatt	20 HP 15 Kw
Diametro/foro lama principale Main blade diameter/hole (bore) Diamètre / alesage lame principale	Diámetro/agujero sierra principal Durchmesser hauptsägeblatt / Bohrloch	450/75 mm
Velocità avanzamento carro lame Saw-carriage forward speed Vitesse d'avance chariot de sciage	Velocidad de avance del carro de sierras Vorschubgeschwindigkeit Sägeschlitten	3 ÷ 60 m/min.
Velocità ritorno carro lame Saw-carriage return speed Vitesse de retour chariot de sciage	Velocidad regreso del carro de sierras Rücklaufgeschwindigkeit Sägeschlitten	60 ÷ 150 m/min.
Velocità spintore Pusher speed Vitesse pousseur	Velocidad empujador Schiebergeschwindigkeit Schieber	2 ÷ 40 m/min.
Velocità ritorno spintore Pusher return speed Vitesse retour pousseur	Velocidad regreso del empujador Rücklaufgeschwindigkeit Schieber	40 ÷ 80 m/min.
Bocche di aspirazione Dus extraction outlets Sorties d'aspiration	Bocas de aspiración Absaugstutzen	4 @ 150 mm
Aspirazione polveri Dust extraction Vitesse de l'air aspiré	Aspiración polvos Staubabsaugung	4000 - 6000 m ³ /h 2500 N/m ²
Peso Weight Poids	Peso Gewicht	6000 - 10000 Kg

Tensione (da specificare su ordinativo) Tension (specify at the order).

Rumorosità e sicurezza secondo l'attuale normativa internazionale in vigore / Noise and safety according today international rules.

Caratteristiche e dati tecnici non sono impegnativi. Ci riserviamo di apportare quelle modifiche che siano da noi ritenute opportune
Technical details and features are not binding. We reserve ourselves the possibility to proceed to all modifications we should consider appropriate.



SEZIONATRICE
PANEL SAW
SCIE A PANNEAUX
SECCIONADORA
PLATTENSÄGE

MACMAZZA s.r.l. - Via Mondini, 72 - 61100 PESARO (ITALY)

Tel. 0721/288000 - Tel. Assistenza 0721/288776 - Fax 0721/288001

<http://www.macmazza.it> - E-mail: info@macmazza.it