

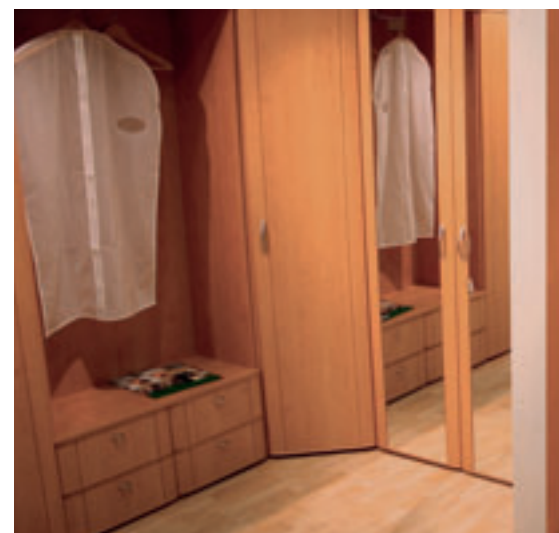
DRILLING MACHINING CENTRES

Increased productivity and flexibility



uniflex

HIGH CUSTOMISATION AND
MAXIMUM PRODUCTIVITY





excellent drilling capacity



eliminates machine set-up times



simple and practical to use



▶ Opposed machining heads (LOWER and UPPER) up to 132 independent spindles.

▶ All operations completed, with the possibility of routing, blade cutting in both X and Y, and insertion of any type of hardware.

▶ Dedicated and powerful software for increased optimisation of the machining phases.

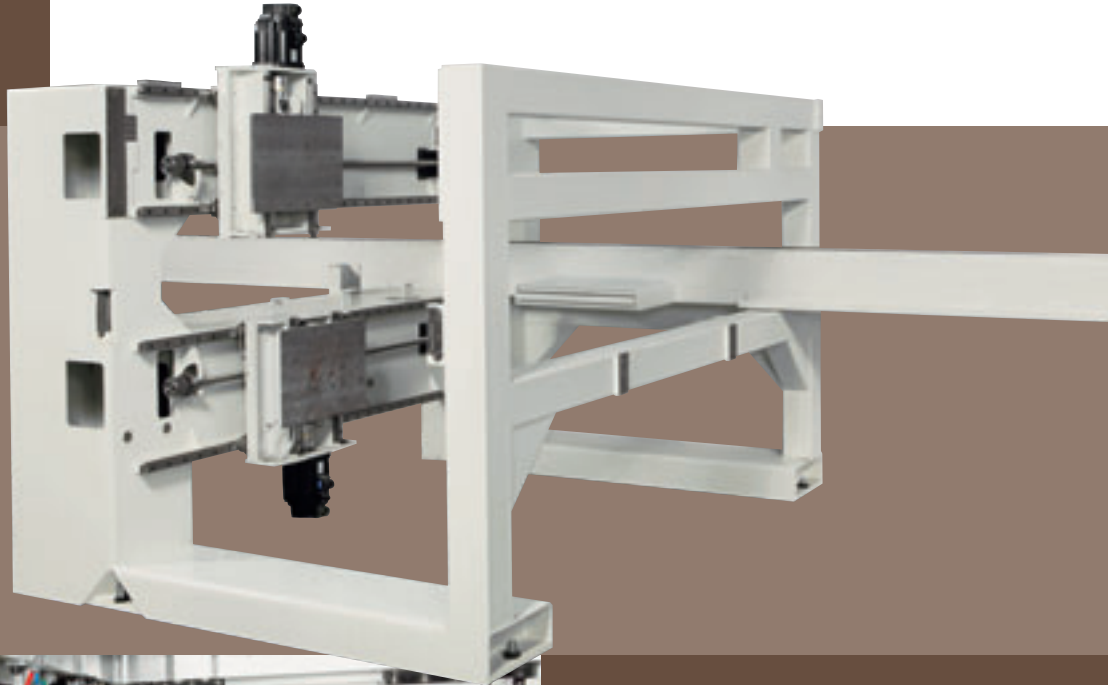
▶ The highest levels of productivity achieved with the minimum number of spindle downstrokes.



uniflex

QUALITY AND PRECISION FOR THE DEMANDING PROFESSIONAL

Arc-welded O-frame closed structure guarantees maximum rigidity of the machining heads in order to achieve the best quality finish of the workpiece



Drilling head produced in a single aluminium alloy fusion machined from a solid for the best drilling precision ($\pm 0.1\text{mm}$): up to 66 independent spindles: 48 vertical and 18 horizontal.

The new tempered steel spindles and the patented integrated ceramic bearings ensure rotation speeds of 6000 rpm.

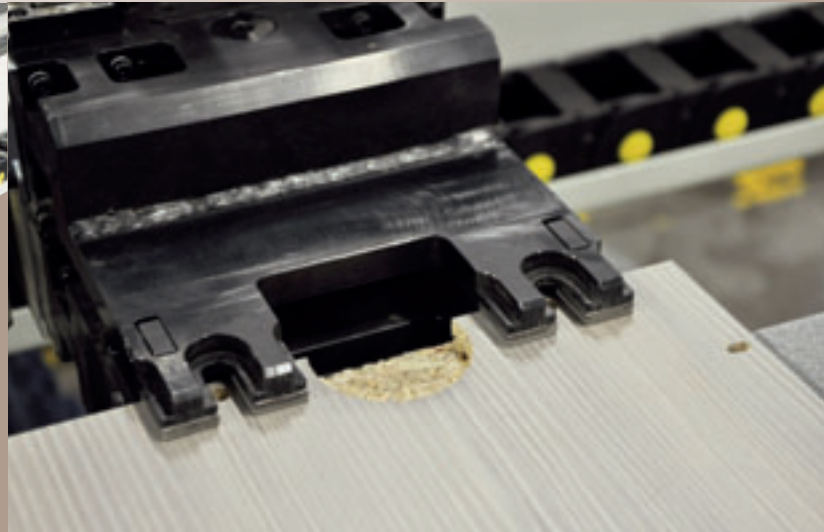
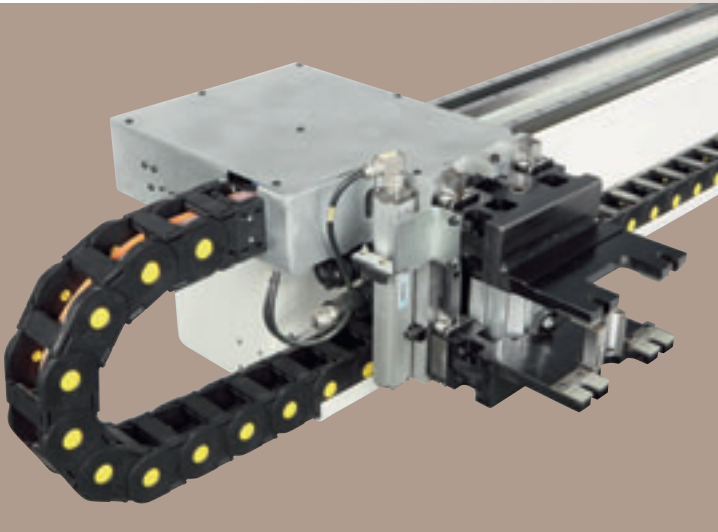
The new-concept work table is designed to perform all machining operations in the spaces between the supports.

The supports, consisting of rollers in a scratch resistant material, guarantee the careful movements of the panels to ensure that the panel surfaces are not scratched.

Rigid pressers at the infeed and outfeed to the work area, guarantee the quality of any type of machining by clamping the panels automatically and precisely.



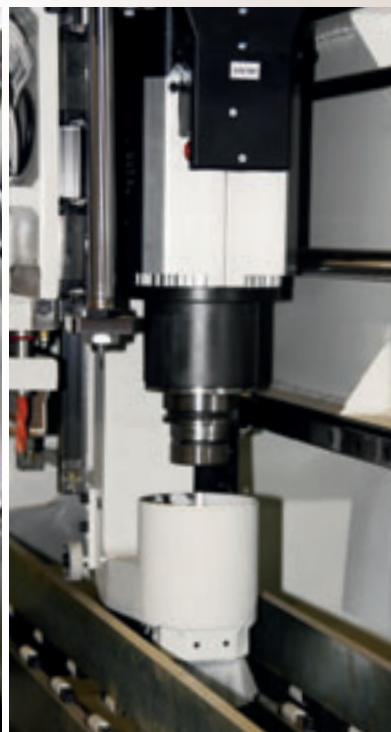
The new panel hold-down grippers feature a revised geometry and independent movement to also allow drilling operations in positions inside the gripper area, for an improved optimisation of the machining of the workpiece and a reduction in the cycle times.



The two THK guides and the Brushless motors combined with the rack and pinion kinematic mechanism, offer rigid movement and precise positioning (± 0.005) with positioning speeds up to 100 met/min.

The digital gauge, with centesimal resolution fitted directly on the main gripper, can be used to perform immediate tests on the thickness of the panels being machined.

The new workpiece transport gripper has been designed to also drill and router inside its geometry, thus avoiding its anti-collision repositioning and drastically reducing the cycle times.



Machining heads for any production requirement

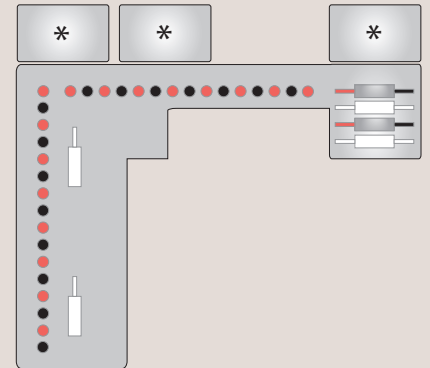
- Integrated saw blade unit fixed in the X direction with tool $\varnothing 120\text{mm}$
- Automatic saw blade unit $0/90^\circ$ with tool $\varnothing 160\text{mm}$
- 7.5KW electro-spindle (S6) with HSK 63 tool holder
- Integrated drilling unit for hinges

TWO CONFIGURATIONS TO MEET ANY PRODUCTION REQUIREMENT

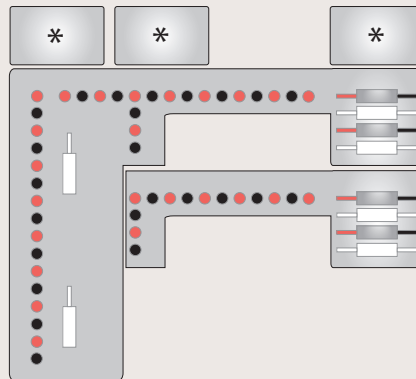
UNIFLEX S

Essential and complete equipment to cover all requirements:

- up to 31 + 31 independent horizontal spindles
- up to 10 + 10 independent horizontal spindles
- up to 3 + 3 positions for:
 - Fixed integrated saw blade unit
 - Automatic saw blade unit 0/90 deg
 - Powerful electro-spindle
 - Integrated unit for hinges
 - Dowelling unit



* Slots available for additional equipment*



* Slots available for additional equipment

UNIFLEX HP

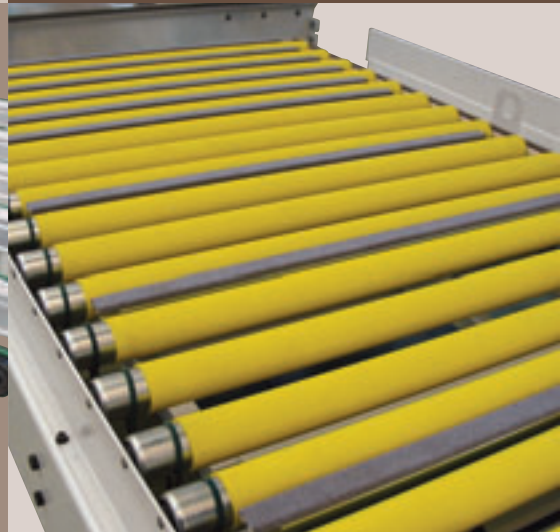
The best configuration for those requiring high productivity levels:

- up to 48 + 48 independent horizontal spindles
- up to 18 + 18 independent horizontal spindles
- up to 3 + 3 positions for:
 - Fixed integrated saw blade unit
 - Automatic saw blade unit 0/90 deg
 - Powerful electro-spindle
 - Integrated unit for hinges
 - Dowelling unit

UNIFLEX HP

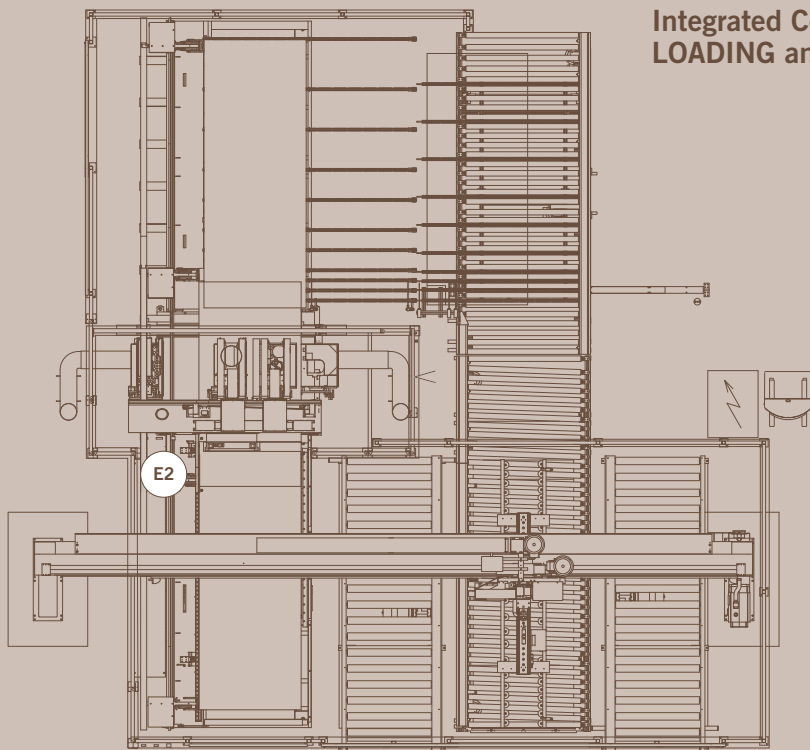
Drilling unit with 14 independent spindles with automatic positioning in the Y direction, indicated for drilling shelves.

GREAT CARE IN PANEL HANDLING



Highest versatility according to the customer's requirements, with various types of loading and unloading systems available for the UNIFLEX, when used as a stand-alone machine or inserted in production cells:

- FLOTEX table for manual loading
- longitudinal and transversal roller conveyors for automatic loading and unloading
- automatic loading and unloading devices (robot).



**Integrated Cell with automatic gantry for
LOADING and UNLOADING operations**

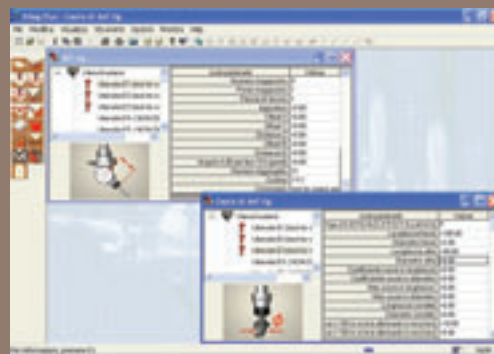
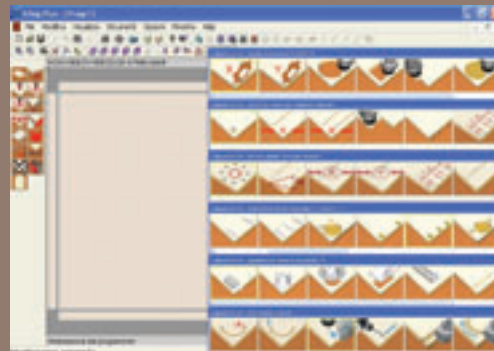
POWERFUL AND EASY TO USE



Powerful 'new-concept' Numerical Control, for Drilling-Routing Machining Centres with Personal Computer interface.

Office PC: very familiar and easy to use by the operator for all the machine's operations, with the latest hardware specifications. The Windows environment forms the basis of the Morbidelli software.

Simple and effective, it has been designed by taking the exact requirements of the end-users, whether expert operators or users new to machining centres, through graphic help prompts and specific MACRO.



Main software features

Fixturing management with tool display and graphic support to avoid the possibility of entering incorrect data;

files in DXF format imported immediately and directly;

dynamic optimised drilling; graphic and syntactic help to speed up the data entry operations;

parametric programming, to automatically update the program when the dimensions of the workpiece being machined are altered, to avoid writing a new program;

self-diagnosis and warning of any errors or possible failures through alarm messages in the user language, with an online manual to quickly understand and resolve any issues;

- graphic help for the work support positioning to avoid collisions with the tools in the case of through drilling and/or routing as well as to eliminate the empirical tests directly on the machine;
- program execution with barcodes.

uniflex

TECHNICAL SPECIFICATIONS

Work area (X-Y)	mm	3000 x 1300
Max machining thickness	mm	80
Drilling heads	n°	2
Drilling unit main motor	kW	3
Electro-spindle unit	kW	7,5 (S6)
Integrated optional units (max on each head)	n°	2
Independent vertical spindles (max on each head)	n°	48
Independent horizontal spindles (max on each head)	n°	18
Min. distance for shelf drilling (with drilling unit in control)	mm	192
Max. distance for shelf drilling (with drilling unit in control)	mm	512
Machine weight	Kg	2800

LAY-OUT

