

MARINUS

MACHINEBOUW

Pioneer in the parquet industry

- cross - cutting
- cutting out defects
- end - matching

**High
capacity**



PROMAX

PATENT GRANTED

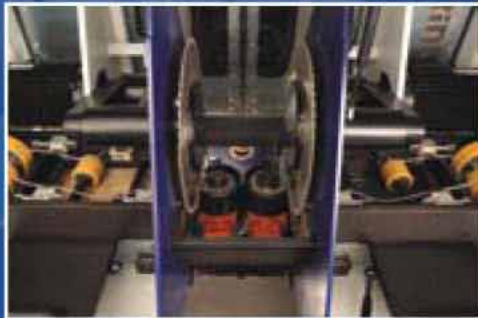
PRONAX

END-MATCHING MACHINE

(tongue and groove, finger-joint)



- The latest development in wooden floor machinery.
- High capacity because of advanced servo technique.
- Machine for end-matching and cross-cutting variable lengths and fixlengths.
- Exceptional in the branche because of its unique combination of production methods.
- Very compact construction: only 2 x 1,20 mtr!



In the machine boards are positioned very accurate, cut and endmatched.



Board before operation (defects marked)



Board after operation



Functional Specifications

Lengths	450 - 6000 mm
Widths	50 - 300 mm
Thicknesses	8 - 30 mm
Capacity	up to 24 pc/min
Random lengths	
Fixlengths	
Optimizing at 10cm-lengths	

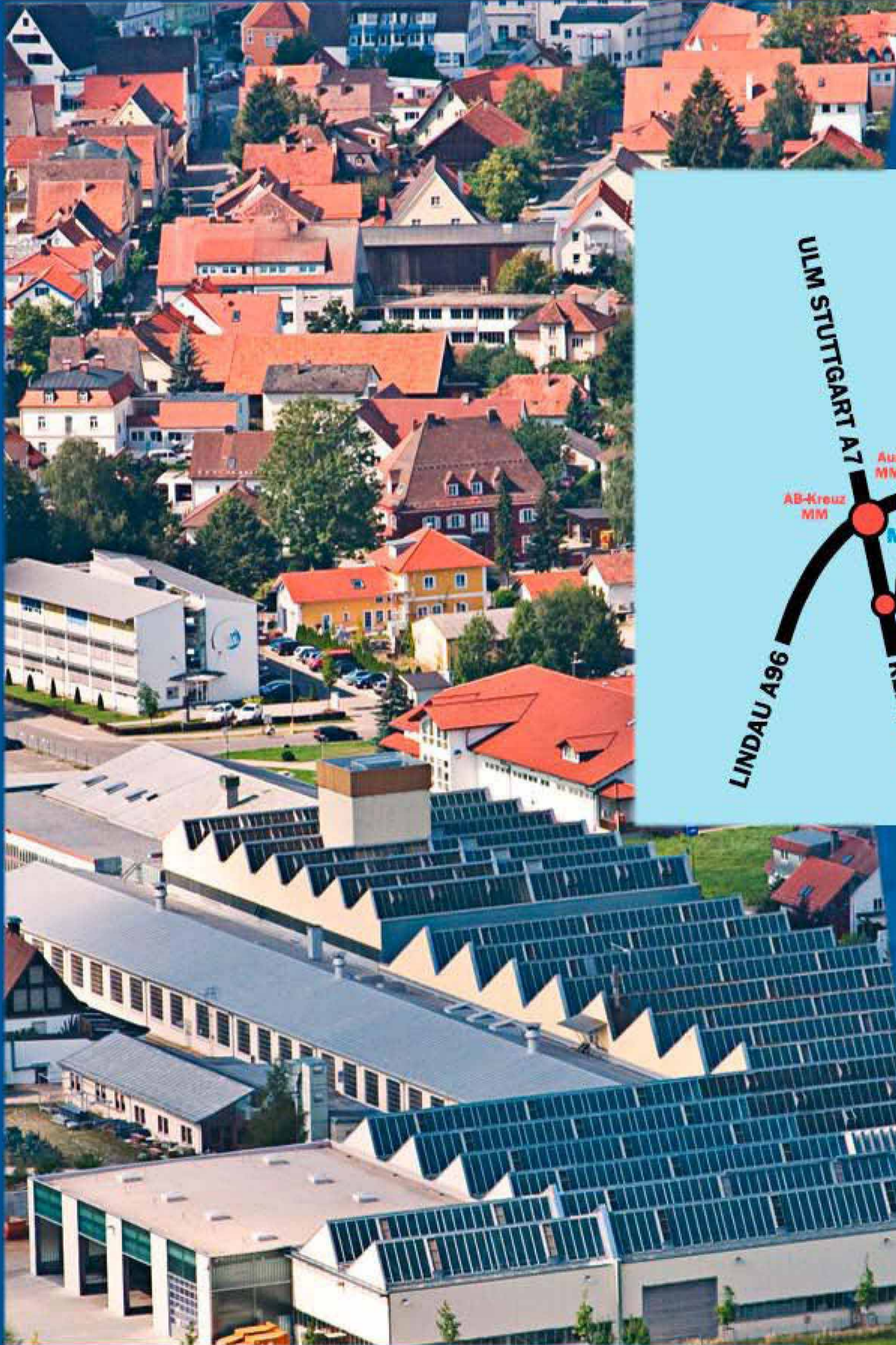
Technical Specifications

Weight	2500 kg
Power	40 kW
Pressure	6 bar
Dim. LxHxW	2000x2000x1200 mm
Cutter diameter	125 mm
Sawblade diameter	450 mm
Dust connection diameter	200 mm



You may view the machine process by cd-rom. To obtain this free cd, please contact us (see reverse side of brochure).

MARINUS



Otto Martin Maschinenbau GmbH & Co. KG
Langenberger Straße 6
87724 Ottobeuren
Deutschland
Tel. +49 (0) 8332 911-0
Fax +49 (0) 8332 911 - 180
sales@martin.info
www.martin.info