

# morbidelli cx100

flexible drilling centre



# morbidelli cx100

compact technology in only 8 m<sup>2</sup>

The **high performance compact** vertical work centre, with maximum drilling ability in a small space:

- **it can produce up to 400 pieces per shift.**
- **ideal for batch 1** productions and boring on **5 sides** of the panel, routing and grooving.
- **reliable and flexible with very short machining cycles** and **zero dead times** for Set-Up operations.
- **maximum freedom in processing** different types of materials (MDF, chipboard, lacquered panels, etc.)

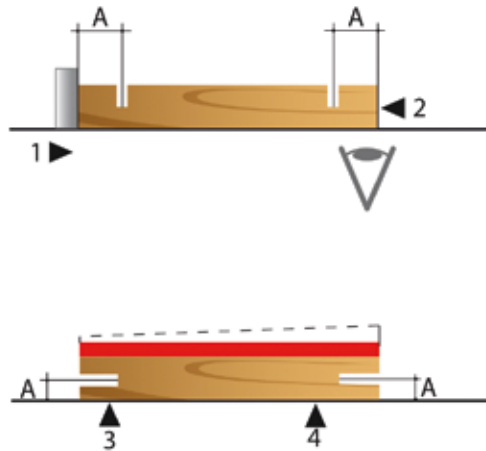
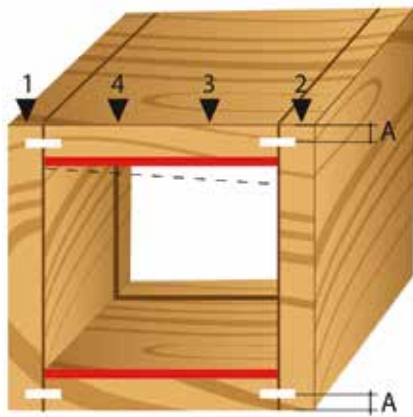
Morbidelli cx100 is your partner for success, always ready for maximum performance at a reasonable cost.





# morbidelli cx100

compact, precise and fast

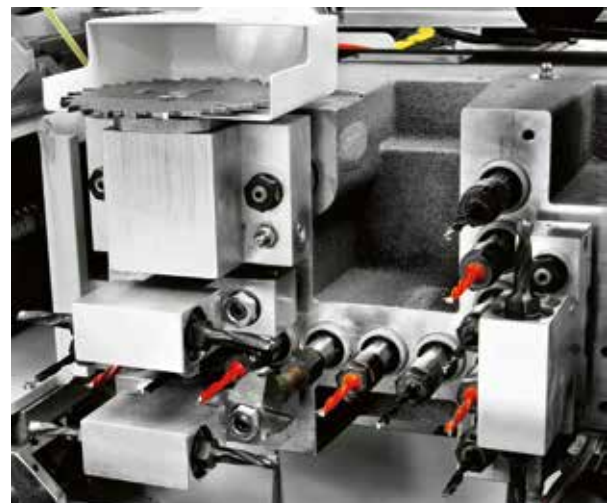


**Perfect finish**, drilling on the top side allows external part of the panel to be referenced, hiding any squaring defects of the piece.



**Very short machining cycles and zero dead times** for set-up operations; the drilling head with 18 independent spindles (12 vertical, 4 horizontal along X axis, 2 horizontal along Y axis) and blade along X axis cover the whole surface of the panel to be machined:

- length from 200 to 3050 mm
- height from 70 to 900 mm
- thickness from 10 to 60 mm



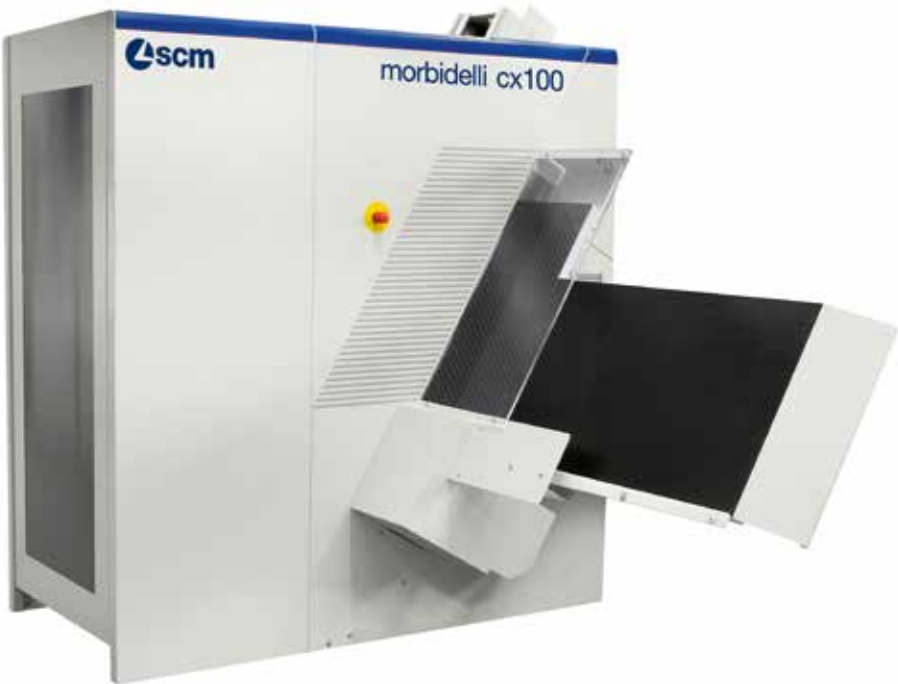


**Highly precise and fast movements:** all the machining units are driven by brushless motors, sliding along prismatic guides with recirculating balls supports. **The displacement** along X, Y, and Z is granted through highly precise recirculating balls screws.



**Maximum set-up speed,** with the ISO 30 fast tool change. Easy and safe replacement of the tool.

**Ergonomic:** the side supports allow the operator to load and unload easily panels up to 3050 mm.



# morbidelli cx100

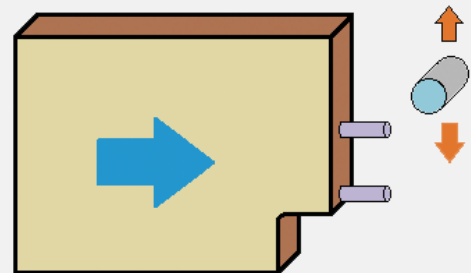
compact, productive, flexible and versatile



**Maximum piece stability and high machining quality**, with the mobile clamp with floating opening that does not require any adjustment and the Bakelite non-scratch table that guarantees high machining quality also for panels with delicate surfaces.  
**Zero imprecision** in horizontal drilling thanks to pressure devices.



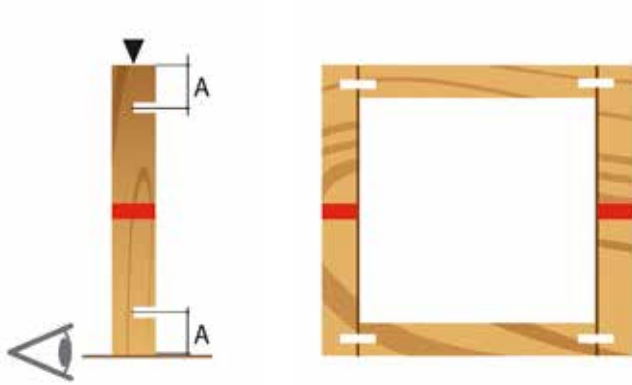
**Highly versatile**, the programmable side reference stop lets you machine pieces with dowels already inserted or with routing already carried out.



**Safety and reliability**, thanks to the upper presser unit which ensures the adherence of the pieces to the lower reference to guarantee maximum machining precision.

The dust extraction hoods clean the piece perfectly.

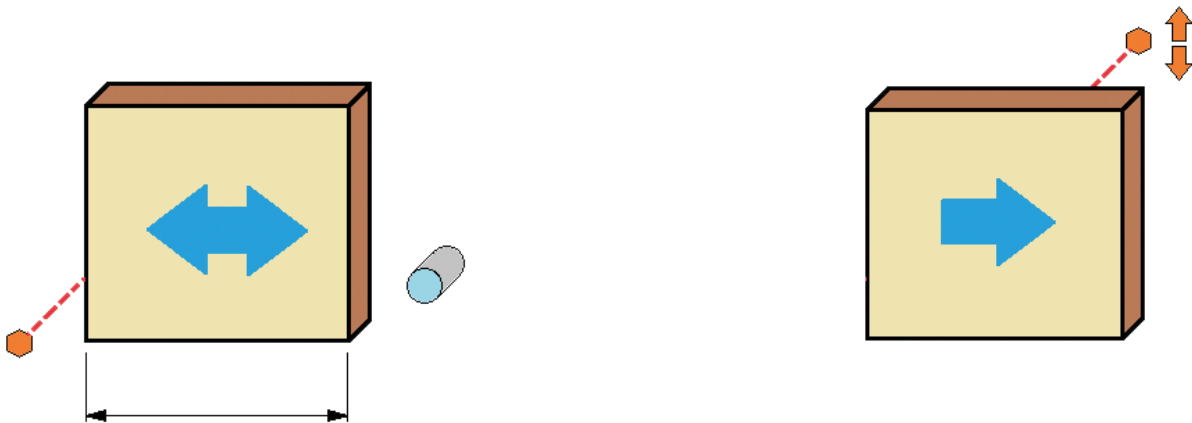
**No dead times:** the barcode reader lets you load the machining program automatically by simply scanning the label on the panel.



**Perfect joints,** with the automatic reading of the piece length. Any difference between the actual length of the panel and the length set is detected by the highly precise laser reader to ensure **perfect alignment**.

**Possibility of executing local routings** along the whole panel:

- blade cutting along X direction
- **rounding** on four edges
- **Toe-Kick** machining



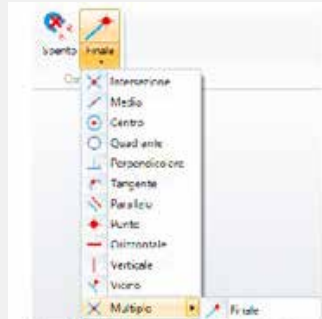
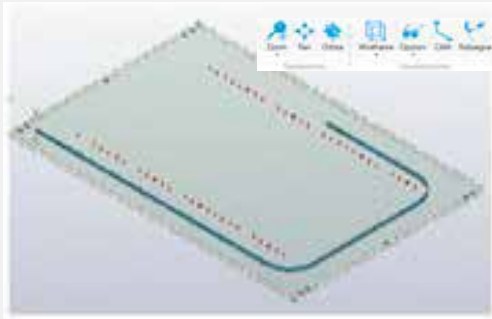
Executing programs with right and left or mixed reference using the **rear sensor**.

**No panel loading errors** with the **Y congruence sensor** that checks that the size of the panel inserted matches the size programmed.

# morbidelli cx100

compact and easy to use

## MAESTRO UNIQUE CREATIVITY



### CAD/CAM programming software to design any production process

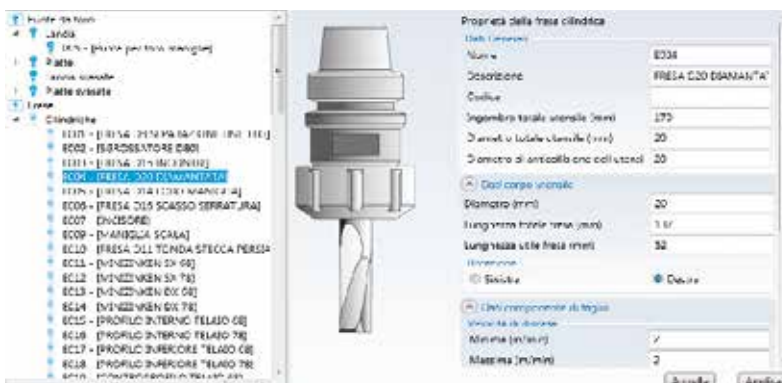
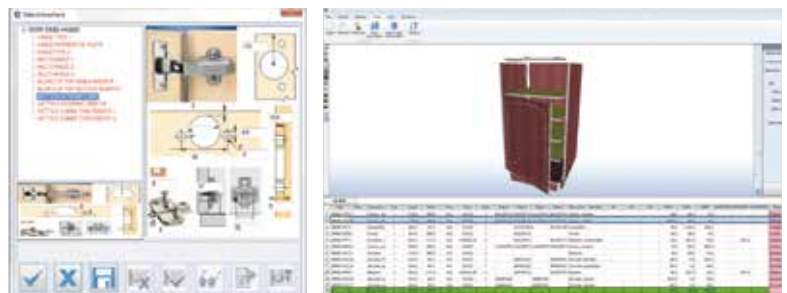
Developed in Windows® environment, it allows for extremely easy programming thanks to an advanced, simple and intuitive environment that provides all the tools necessary for drawing pieces and lay them out on the work table. The tool management and the relative machining are also contained in a perfectly integrated and high-performance context.

## MAESTRO CABINET UNIQUE FURNITURE CREATION



Application designed specifically to design furniture for the home and office furniture sector and program cabinets step by step.

It includes a vast library of the most common furniture models and, thanks to a simple wizard, the user is helped in programming and customising the model based on their own requirements.

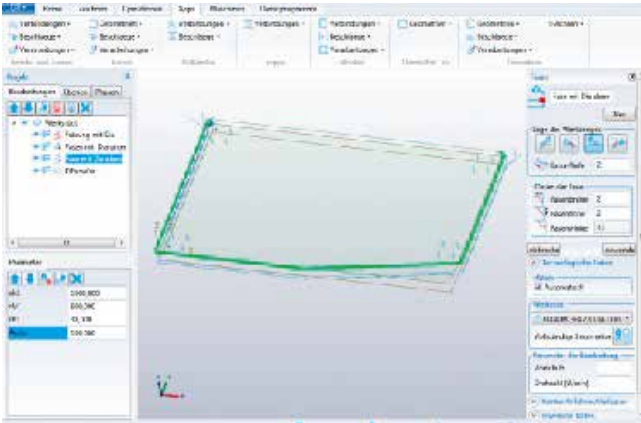


### Tool Manager

The tools can be selected directly and simply thanks to a clear graphic display.



# Apps that make designing a breeze and save you time



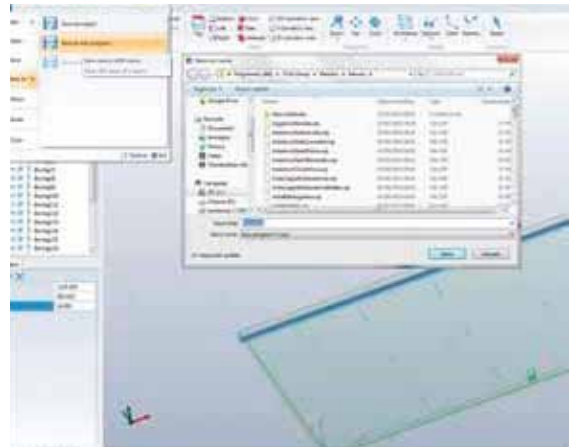
**Maestro APPS** is a library of readily available and easy to use programming functions developed by Scm to create parts for furnishings, furniture, etc. With one click users have free access to Scm technological know-how.

### MACRO: The fastest

The programs can be quickly transformed in macro-machinings and archived in a library, ready to be used.

### TECHNOLOGY: Learning from experience

Fast programming of common recurring machining operations and generation of sub-programs that can be applied to each new geometry.

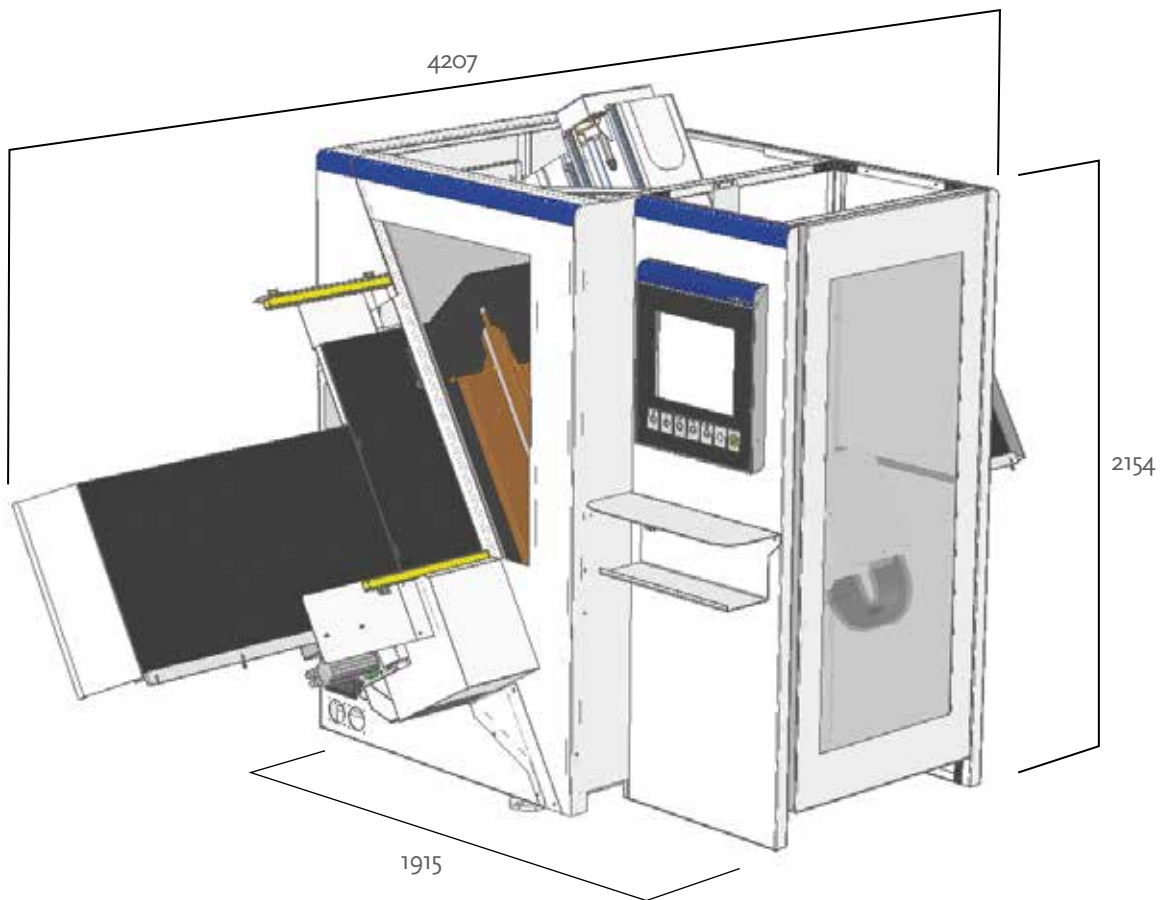


All the machine functions can be managed with a simple touch, thanks to the 19" "touch screen" monitor. The ethernet connection allows the machine to be connected to the company network.



# morbidelli cx100

compact size, maximum performance



## MORBIDELLI CX100

### technical specifications

Machinable piece max. size	mm	3050x900x60
Machinable piece min. size	mm	200x70x10
Axes X-Y speed	m/min	40 - 40
Independent vertical spindles	n.	12 (7+5)
Independent horizontal spindles along X	n.	4
Independent horizontal spindles along Y	n.	2
Electrospindle power max	kW	5,5



### LOWER CONSUMPTIONS = LOWER COSTS

SavEnergy ensures that **energy is used only when it is needed**, operating the devices only when it is strictly necessary. The machine sets itself automatically in stand-by when there are no panels to machine. Yearly saving up to 10% (opt).

# THE STRONGEST WOOD TECHNOLOGIES ARE IN OUR DNA

## SCM. A HERITAGE OF SKILLS IN A UNIQUE BRAND

Over 65 years of success gives SCM the centre stage in woodworking technology. This heritage results from bringing together the best know-how in machining and systems for wood-based manufacturing. SCM is present all over the world, brought to you by the widest distribution network in the industry.

65 years history

3 main production sites in Italy

300.000 square metres of production space

17.000 machines manufactured per year

90% export

20 foreign branches

350 agents and dealers

500 support technicians

500 registered patents

In SCM's DNA also strength and solidity of a great Group. The SCM Group is a world leader, manufacturing industrial equipment and components for machining the widest range of materials.

## SCM GROUP, A HIGHLY SKILLED TEAM EXPERT IN INDUSTRIAL MACHINES AND COMPONENTS

### INDUSTRIAL MACHINERY

Stand-alone machines, integrated systems and services dedicated to processing a wide range of materials.



WOODWORKING TECHNOLOGIES



TECHNOLOGIES FOR PROCESSING COMPOSITE MATERIALS, ALUMINIUM, PLASTIC, GLASS, STONE, METAL

### INDUSTRIAL COMPONENTS

Technological components for the Group's machines and systems, for those of third-parties and the machinery industry.



SPINDLES AND TECHNOLOGICAL COMPONENTS



ELECTRIC PANELS



METALWORK



CAST IRON



The technical data can vary according to the requested machine composition. In this catalogue, machines are shown with options. The company reserves the right to modify technical specifications without prior notice; the modifications do not influence the safety foreseen by the CE Norms.



is more



**SCM GROUP SPA**

via Casale 450 - 47826 Villa Verucchio, Rimini - Italy  
tel. +39 0541 674111 - fax +39 0541 674274  
morbidelli@scmgroup.com  
www.scmwood.com



00L0367229A