



OLIMPIC K 800

Automatic edge bander



OUR TECHNOLOGY BEHIND YOUR IDEAS

olimpic k 800

Automatic edge bander



EDGE BANDING
ON ALL 4 SIDES

3D DESIGN

PROGRAMMING

CUTTING

EDGE BANDING

3 AXES BORING-ROUTING

CALIBRATING/SANDING

ASSEMBLING

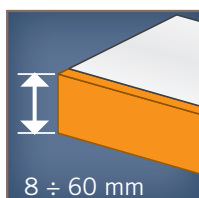
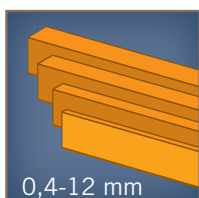
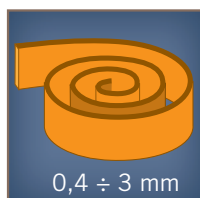


olimpic k 800

AUTOMATIC EDGE BANDER
For continuous use and
the very best performance



K 800 T-FR2





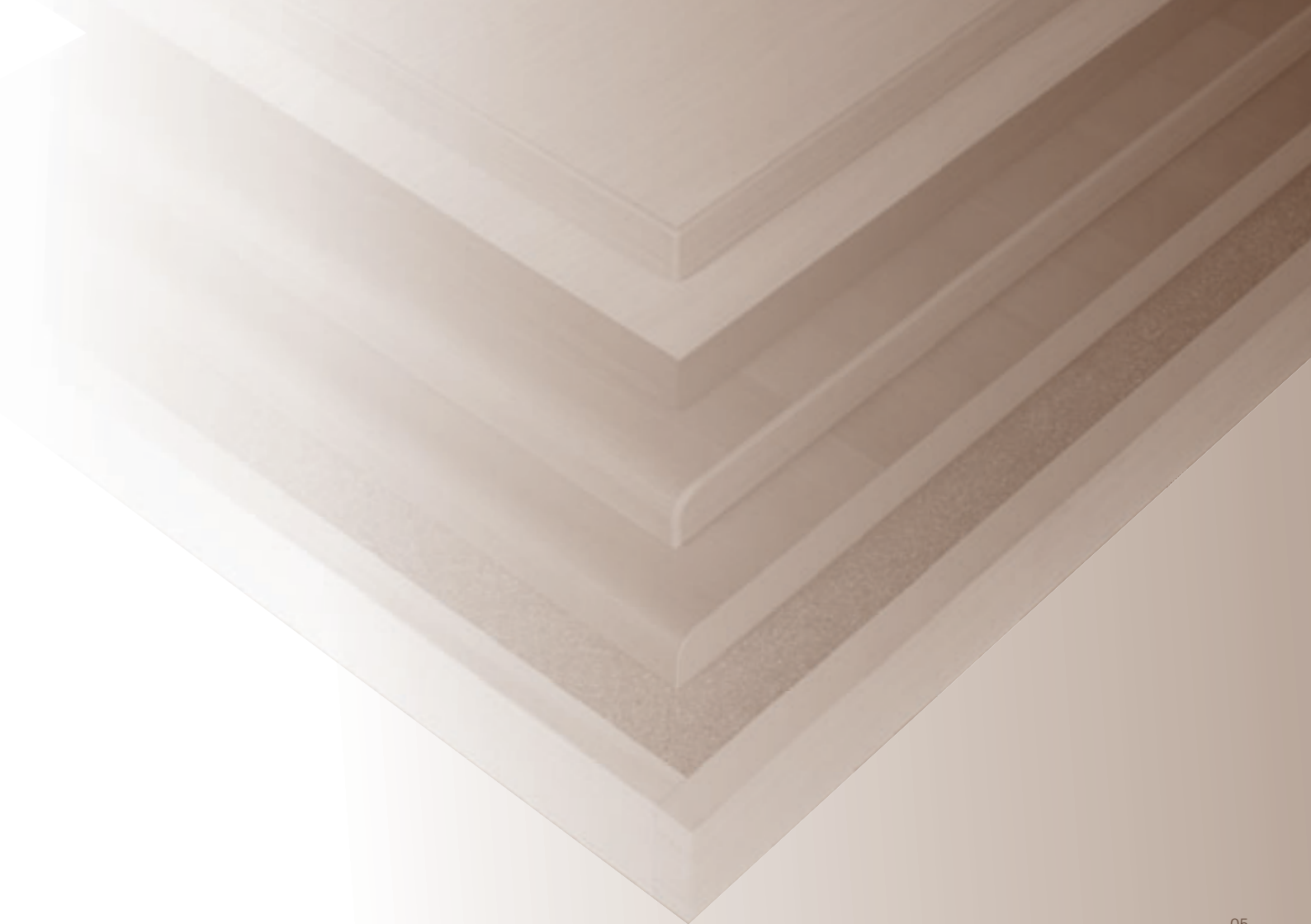
Solutions for
high quality
machining



Reliable for
the highest
productivity



Possibility of
integration
in NetLine





Solutions for
high quality
machining

TECHNOLOGY FOR OPTIMUM EDGE BANDING



BAR CODE READER (OPT)

- ▶ No errors with automatic program recall



ORION 110 CONTROL SYSTEM (supplied as a standard feature on the entire range)

- ▶ Basic and intuitive for error-free machining
- ▶ Memory capacity with up to 60 working programs
- ▶ Large characters for easy reading



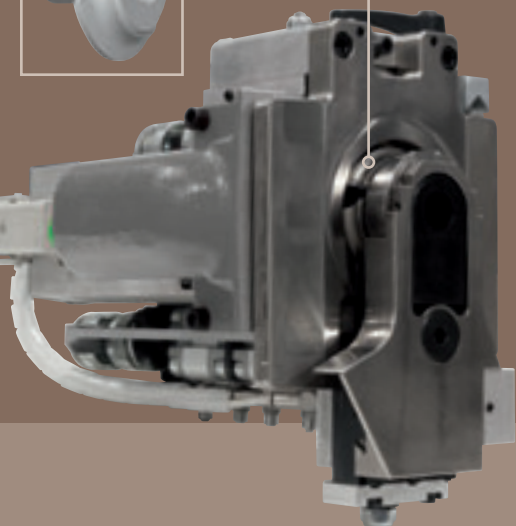
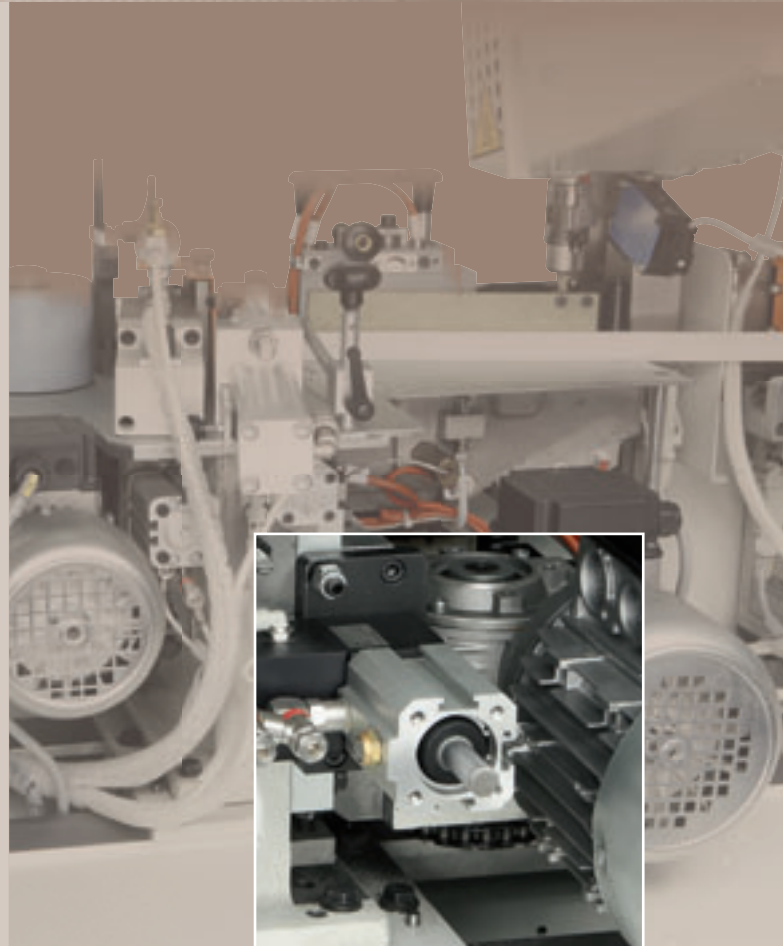
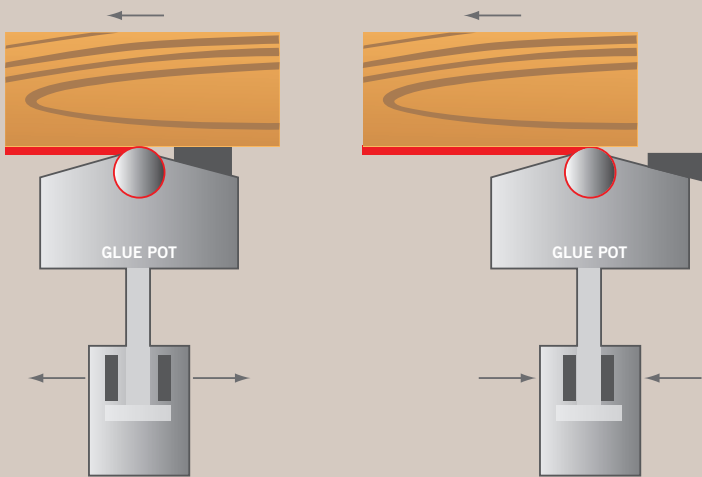
STARTOUCH CONTROL SYSTEM (OPT)

- ▶ Intuitive and easy to use thanks to its customised graphics and one touch mode
- ▶ Large dimensioned display (12")
- ▶ Simple when choosing the machining required
- ▶ "TELESOLVE"(opt) for diagnostic and on-line service



“iGLUE” KIT (OPT)

- ▶ **Optimum finishing including delicate panels.** The locking of the glue pot copying operation in the last panel section avoids contact of the roller with the panel
- ▶ Automatic exclusion of the glue pot in the case of non-use of the group or stopping of the feed track



◀ “ED SYSTEM” EXHAUST SYSTEM

- ▶ **Increased cleaning of panels thanks to optimum chips suction** with the “ED-SYSTEM” function which couples the encircling exhaust hood to the suitable container with a filter for long chips

▶ GLUE POT SUBSTITUTION

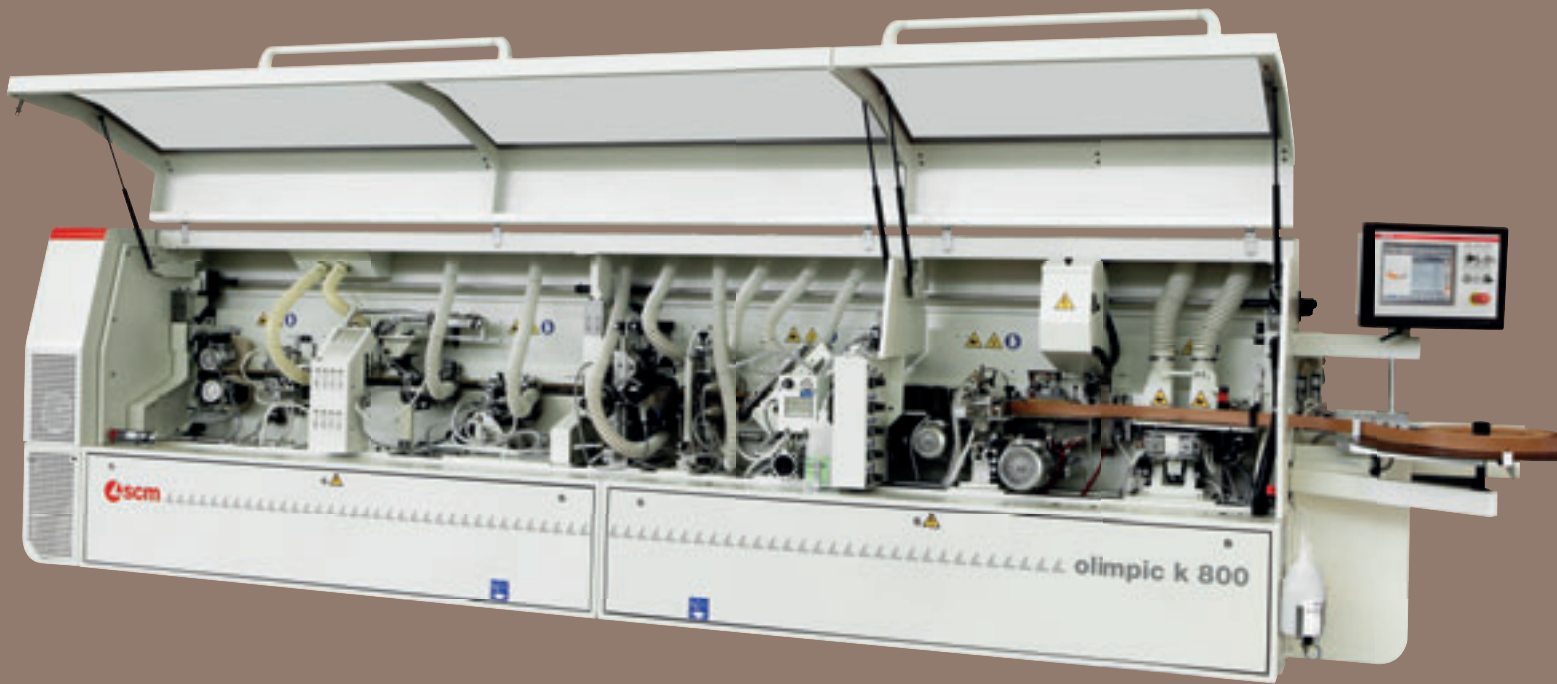
- ▶ **Rapid changeover of the glue colour/type of glue to be applied.**
- ▶ The “Fastlock” rapid unlocking system allows for fast glue pot substitution, while the “double thermoregulation system” manages two working temperatures in order to apply both EVA and Polyurethane thermosetting adhesives (opt)





Reliable
for high
productivity

ALL WHAT YOU EXPECT FROM AN EDGE BANDER... AND MORE



PANEL SPACER (OPT)

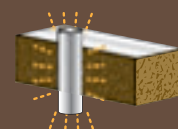
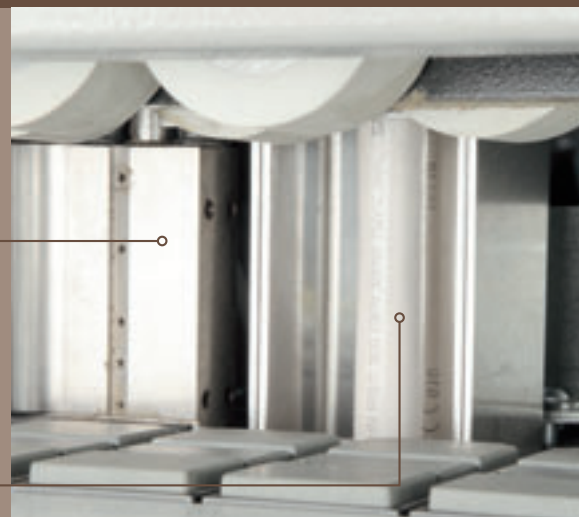
- ▶ Panel introduction into the machine with the correct space between panels
- ▶ **The distance between the panels is automatically optimised according to the selected operating groups**

▶ BLOWER FOR PANEL CLEANING

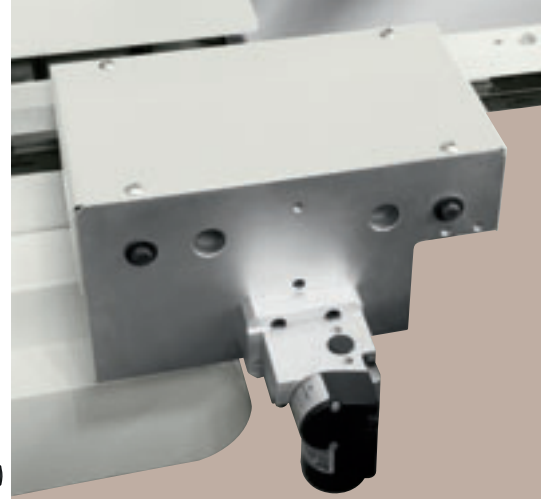
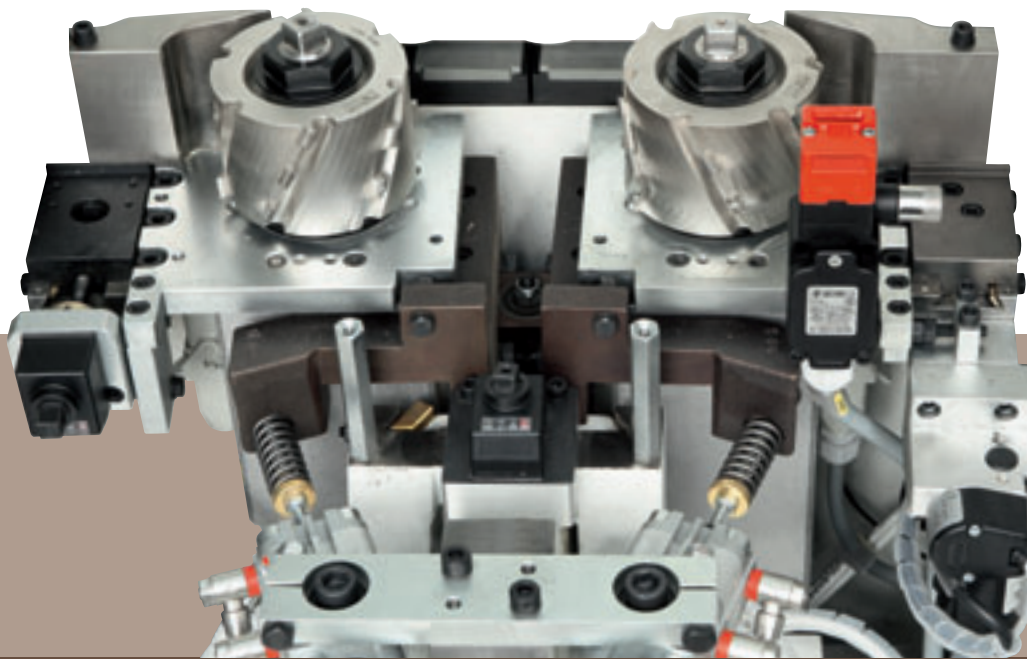
- ▶ Optimum glue adhesion with the cleaning of the machined surface

▶ INFRARED CERAMIC LAMP (OPT)

- ▶ Improved glue adhesion due to heating of the surface to be glued

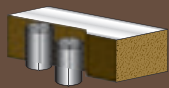


Infrared
ceramic lamp



▶ “EASY SIZE PLUS”
DEVICE (OPT)

- ▶ Allows the adjustment of the material removal of the panel edge trimming group in a few seconds due to the powered axes positioned on the infeed fence and copying device of the group



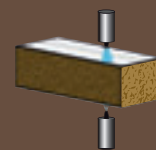
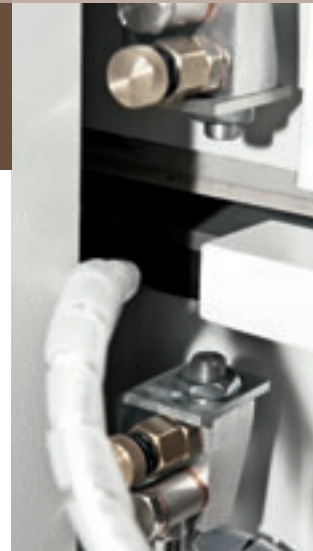
RT-E panel
edge trimming group

▶ RT-E PANEL EDGE TRIMMING
GROUP

- ▶ Provides a perfect surface for gluing the edge
- ▶ ED SYSTEM high efficiency exhaust outlets
- ▶ Constant removal on the entire panel length with the copying devices kit (opt)

▶ AAR ANTI-ADHESIVE GROUP
(OPT)

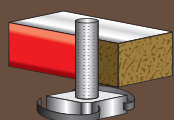
- ▶ It ensures the highest finishing quality by preventing the glue sticking to the upper and lower panel surfaces



AAR
anti-adhesive group

▶ VC 800 GLUING GROUP

- ▶ It is possible to edge material strips up to 12 mm thickness and coiled edges up to 3 mm
- ▶ Pre-melting device for the automatic feed of glue to the glue pot (opt), it is advisable for panels which require a high consumption of glue
- ▶ Optimum gluing of solid wood edges with VC 1000 glue pot that allows the reverse rotation of the glue roller (kit 12 mm opt)

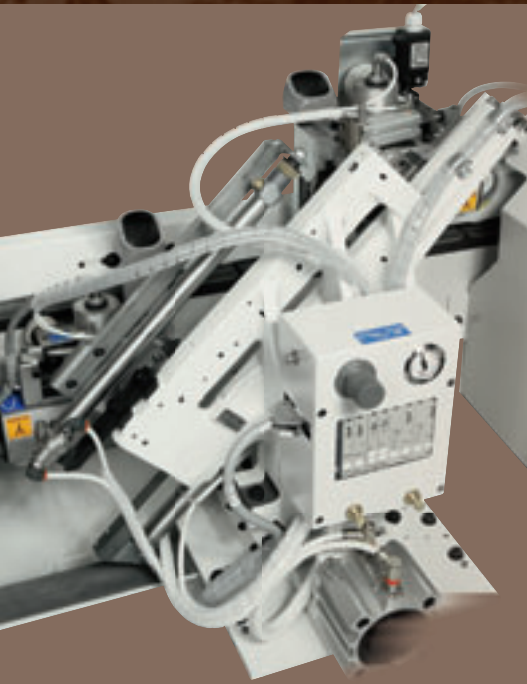


VC 800
gluing group



Reliable
for high
productivity

ALL WHAT YOU EXPECT FROM AN EDGE BANDER... AND MORE



◀ K/SEL END CUTTING GROUP

- ▶ The best finishing quality thanks to the motors sliding on two independent guides
- ▶ Rapid set-up between straight and angled cutting with the automatic independent tilting of the motors (opt)
- ▶ Horizontal movement of the group in order to leave an exceeding edge that ensures an optimum finish of the Round group (opt)

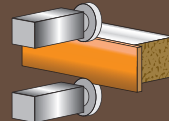


▶ RS/K IN-LINE TRIMMING GROUP

- ▶ For the trimming of a solid wood edging or the removal of the exceeding edge thus providing the following chamfering operation
- ▶ ED SYSTEM high efficiency exhaust outlets



K/SEL
end cutting group



RS/K
trimming group



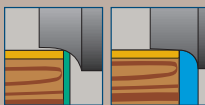
NESTING COPYING DEVICES (OPT)

- ▶ No difficulty when finishing panels already processed with the "nesting" working cycle, through the suitable copying devices to be mounted on the upper part of the trimming and edge scraping groups

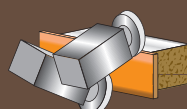
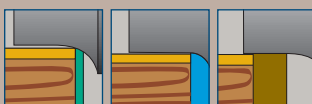
▶ RI/800 TRIMMING GROUP

- ▶ The very best finishing quality with the rotating front and vertical copying discs
- ▶ Rapid machine changeover between thin, radius and solid wood edges with the 2 and 3 pneumatic positions kit (opt)
- ▶ Solid wood changeover without any operator intervention, thanks to the powered axes installed on the front copying devices (opt)
- ▶ ED-SYSTEM high efficiency exhaust hoods

2 POSITIONS KIT



3 POSITIONS KIT



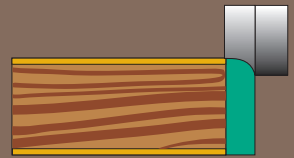
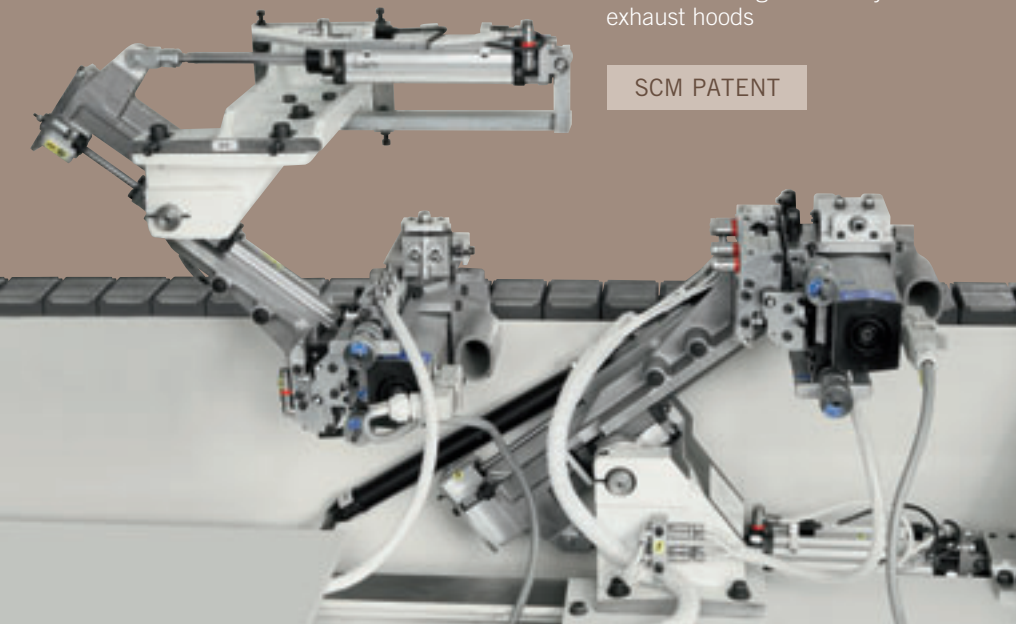
RI/800
trimming group



2 MOTORS ROUND GROUP

- ▶ Perfect rounding and trimming of straight, chamfered and post formed panels
- ▶ **Rounding angles with 16 m/min track speed**
- ▶ ED-SYSTEM high efficiency exhaust hoods

SCM PATENT



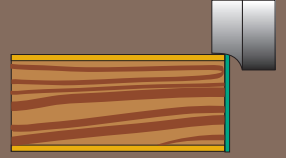
3 mm



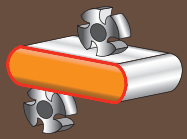
0,8 mm



0,6 mm



0,4 mm

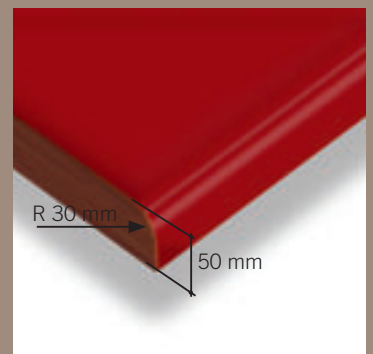
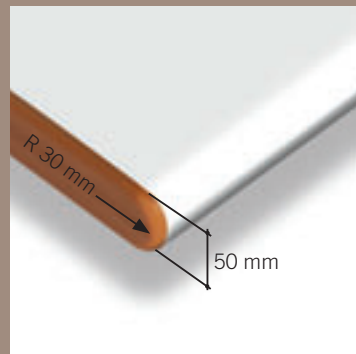
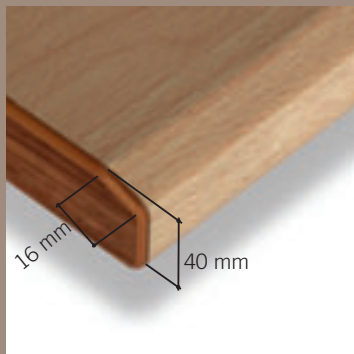
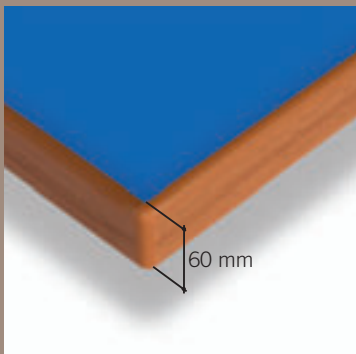


2 motors round group

"4 EDGE" KIT (OPT)

- ▶ Automatic positioning of the group for the machining of 3 thin edges and 1 radius edge

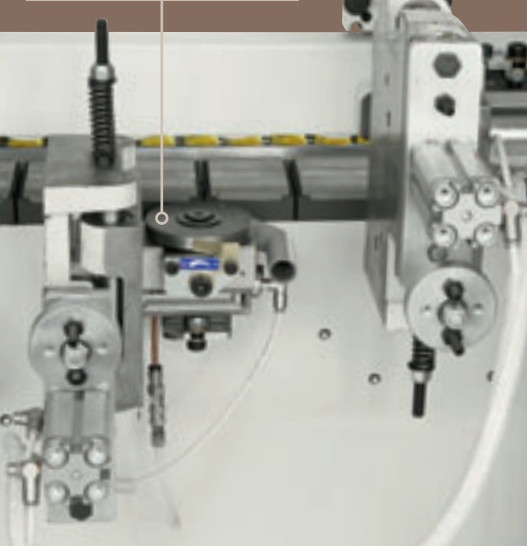
MACHINING EXAMPLES WITH THE 2 MOTORS ROUND GROUP





Reliable
for high
productivity

ALL WHAT YOU EXPECT FROM AN EDGE BANDER... AND MORE

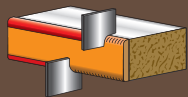


▶ RAS/1000 EDGE SCRAPING GROUP (OPT)

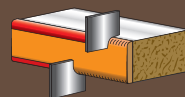
- ▶ Rapid and easy work changeover of the radius edge thanks to the substitution of the cutter-head, complete with rotating copying discs
- ▶ For the finishing of the PVC/ABS radius edge
- ▶ The group is complete with extraction hood with suitable container with filter for long chips

▶ RAS/S 2P EDGE SCRAPING GROUP (OPT)

- ▶ Automatic work changeover of the radius edge through the two tool pneumatic positions
- ▶ For the finishing of the PVC/ABS radius edge
- ▶ The group is complete with large dimensioned extraction hood with suitable container with filter for long chips



RAS/1000
edge scraping group



RAS/S 2P
edge scraping group

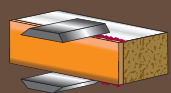
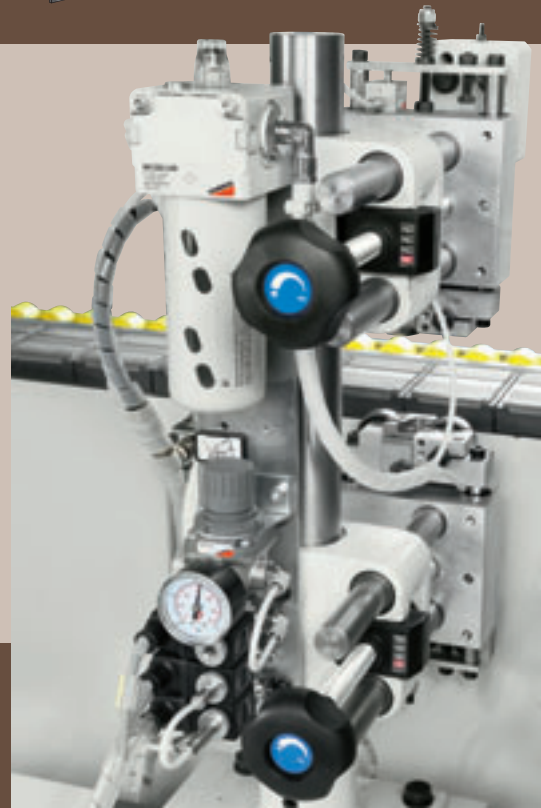


▶ RCL GLUE SCRAPING GROUP (OPT)

- ▶ Eliminates any excess glue on the panel surface
- ▶ Optimum use with soft/ post formed panels thanks to the independent intervention of the two tools

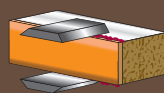
▶ RCA/2C GLUE SCRAPING GROUP (OPT)

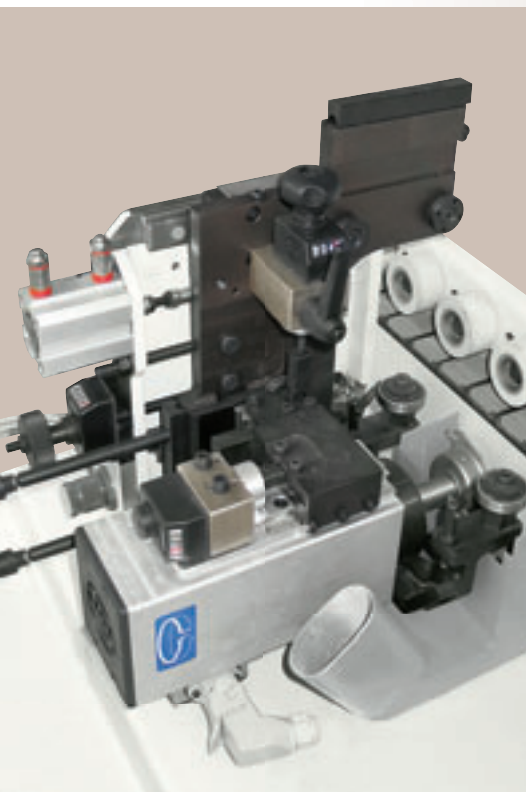
- ▶ Eliminates any excess glue on the panel surface
- ▶ Best finishing quality even on the panel edges due to the two rotating copying discs



RCL glue
scraping group

RCA/2C glue
scraping group



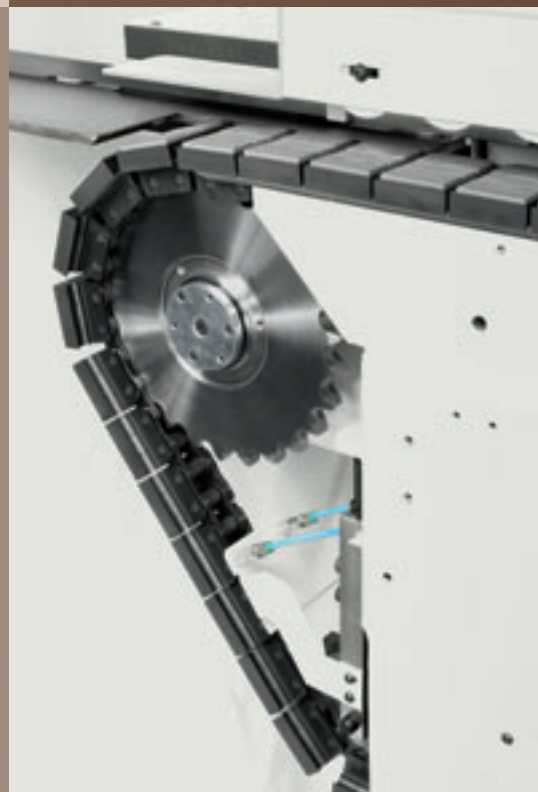


◀ K-100 SPINDLE MOULDER GROUP

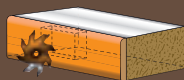
- ▶ It carries out through grooves or timed grooving on the front or lower panel sides
- ▶ The group is complete with front copying devices and exhaust hood

▶ PANEL MOVEMENT SYSTEM

- ▶ **Perfect straight movement of the chain and panel holding due to the large dimensioned chain (1-1/4")**
- ▶ Automatic lubrication of the blocks



K-100 spindle moulder group



◀ SPN BRUSHING GROUP (OPT)

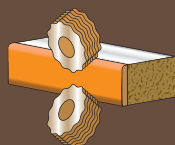
- ▶ Allows panel cleaning and polishing
- ▶ Easy adjustment with the hand wheel supplied with the group

SPRAY-MIST DEVICE FOR EDGE FINISHING (OPT)

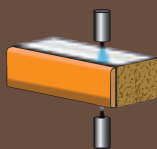
- ▶ It improves the panel cleaning and the polishing of the PVC/ABS edge

▶ HOT AIR BLOWER FOR PVC/ABS EDGES (OPT)

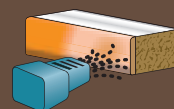
- ▶ It reactivates the colour of the PVC/ABS edges



SPN brushing group



Spray-mist device



Hot air blower

NETLINE



PREPARATION

INTERIOR DESIGN

3D DESIGN

- ▶ **xcab**

3D project of a sequence of cabinets_Definition of the cutting list to be optimised_Boring routing program generation_Extremely easy to use
- ▶ **giotto**

3D project of a complete room furniture (including under roof)_Rendering _Direct export of the cutting list to be optimised/sized_ Boring routing program generation and hardware management_ Preinstalled, customisable and parametric furniture database
- ▶ **imos**

3D project of a complete room furniture_Rendering _Direct export of the cutting list to be optimised/sized_Boring routing program generation and hardware management _Automatic generation of product catalogue_Integrable with company management IT system

PROGRAMMING

- ▶ **ultracut**

Panel optimisation_Cutting guide (navigator) for L'invincible saw
- ▶ **ottimo**

Multi-job optimisation_Costs and times definition_ Material stock management
- ▶ **xylog plus**

Boring and routing schemes programming _Machine functions and barcode management_Shared by all SCM CNC machines
- ▶ **flashnest**

Nesting optimisation_Easy to learn and to use

PROCESS COMPLETION

3 AXIS CNC BORING ROUTING

- ▶ **cyflex**

All boring operations and grooving_Safety enclosure on working unit instead of floor mats_Dust extraction on the base_CNC SCM / Xilog Plus on PC Office
- ▶ **tech**

All boring operations and grooving, Outside profiling and routing_Horizontal group and HSK 63F 11kW (S6) SCM electrospindle with Vector axis_CNC SCM / Xilog Plus on PC Office_Protection Bumpers to optimize alternate work process (no safety mats required)
- ▶ **pratix**

Nesting processing_Vertical boring operation_Outside profiling and routing

CURVED EDGING

- ▶ **olimpic m**

Curved and Straight Panels_Thickness up to 3 mm_Edge height up to 80 mm



OPTIMISE TIME AND RESOURCES!
 SELECT THE SOFTWARE AND SCM
 MACHINES MEETING YOUR INVESTMENT
 AND PRODUCTION CAPACITY AND YOU'LL
 HAVE ALL THE ADVANTAGES OF THE
INTEGRATED PROCESS.

INTEGRATED PRODUCTION

CUTTING

▶ **seghe circolari**

Post-forming, parallel cutting, angular cutting by means of FULL SUPPORT_Touch screen control and operator's assistance with graphic help_Wireless data transmission between digital readouts of squaring rule stops and full support

Linivincibile

▶ **sigma**

Grooves execution, slots execution device, postforming_Saw carriage up to 135m/min and pusher up to 70 m/min_Automatic detecting system for length, width and panel thickness_Automatic blades locking with selector

▶ **pratix**

Nesting processing_Vertical boring operation_Outside profiling and routing

STRAIGHT EDGING

▶ **olimpic k**

Solid wood up to 12 mm, thin edges and ABS up to R 3 mm_Soft/postformed panels_“StarTouch” control system with 12” touch screen display_Pur glue applicable

▶ **olimpic s**

Solid wood up to 22 mm, thin edges and ABS up to R 3 mm_Soft/postformed panels_Winedge PC control system_Pur glue applicable

CALIBRATING SANDING

▶ **sandya**

Solid wood calibrating, sanding and finishing_Calibrating of chipboard, m.d.f. and other wooden panels_Veneered panels presanding, sanding and finishing_Logic touch screen electronic programmer for the total machine control

ASSEMBLING

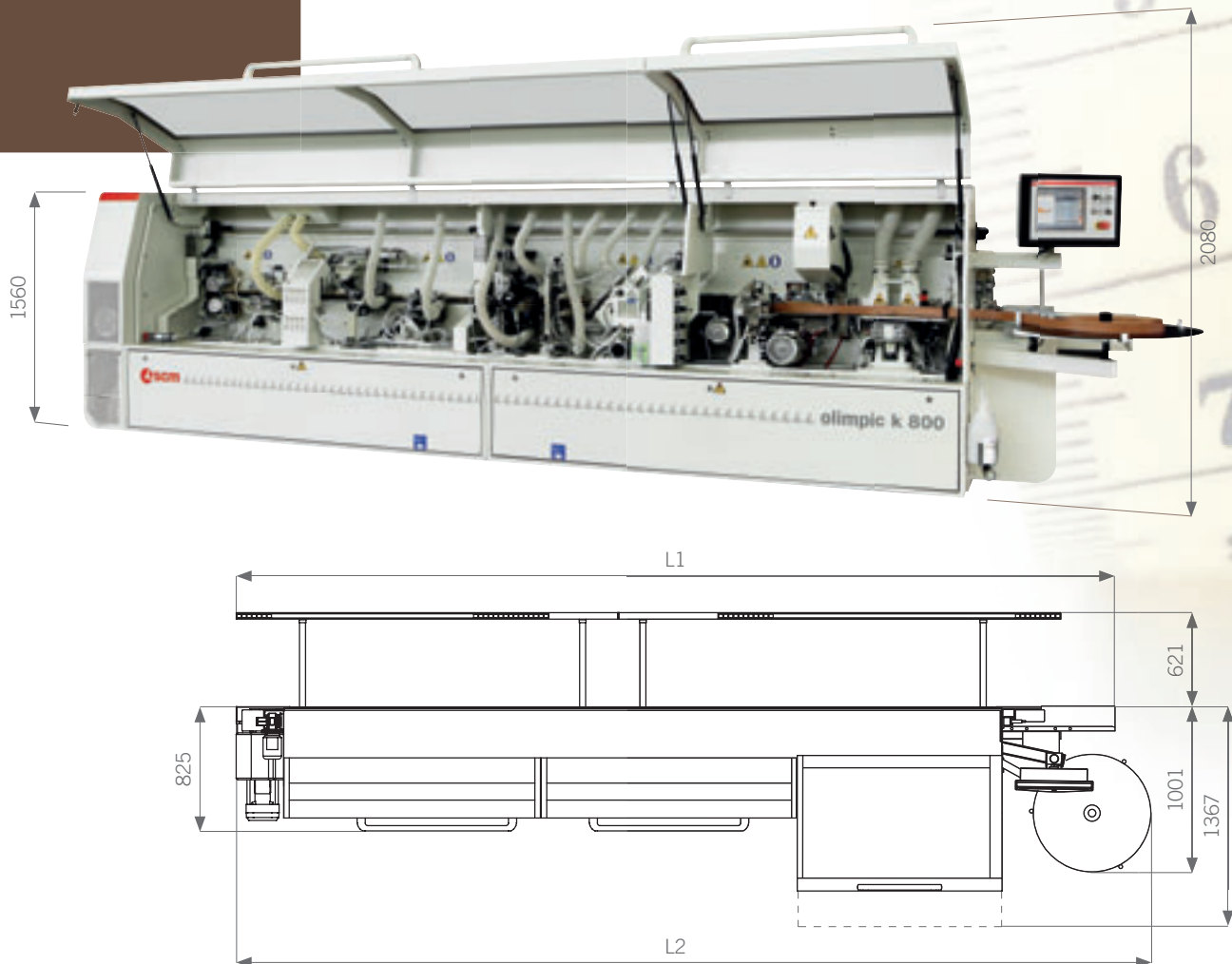
▶ **assembla e-p**

Manual loading for small lots and customised furniture manufacturing_Open rear structure, with unloading support roller and photocells safety bar_Manual or automatic movements, controlled from 3,8”touch screen

INTEGRATED PROCESS

olimpic k 800

TECHNICAL DATA



MACHINE LENGTH

| Composition | | C | E | F | ER2 | FR2 | T-C | T-E | T-F | T-ERL | T-ERS | T-FR2 |
|-------------|----|------|------|------|------|------|------|------|------|-------|-------|-------|
| Length - L1 | mm | 3635 | 3835 | 4635 | 5035 | 5435 | 4635 | 4635 | 5035 | 5435 | 5835 | 5835 |
| Length - L2 | mm | 3873 | 4073 | 4873 | 5273 | 5673 | 4873 | 4873 | 5273 | 5673 | 6073 | 6073 |

TECHNICAL DATA

| | | |
|--------------------|-------|------------------|
| Panel thickness | mm | 8 - 60 |
| Edge thickness | mm | 0,4 - 8 (12 opt) |
| Min. panels length | mm | 140 |
| Feed speed | m/min | 12 - 18 |

K 800 NOISE LEVEL

Operating conditions: PANEL EDGE BANDING (reference standard EN 1218-4:2004+A2:2009)*

| | Reference standard | Uncertainty factor K (prob. 68.27%) | EDGE BANDING | |
|---|---------------------|--|--------------|--------------|
| | | | VSA | LAV |
| Lop: noise level at operator position - dB (A) and peak level - [dB (C)] | UNI EN ISO 11202-97 | ≤ 4 [dB (A)] | VSA | 77.5 [102.0] |
| | | | Input | 75.3 |
| | | | Output | 78.5 [100.8] |
| Lw: emitted noise level - dB (A) _{re 1pW} - [mW (A)] | ISO 3746-95 | ≤ 4 [dB (A)] | 91.9 [1.5] | 93.6 [2.3] |

The maximum instantaneous noise level pressure C, is under 130 dB (C)

VSA: no machining without dust extractor equipment LAV: machining

* Refer to R.d.P. 2011007r for test conditions different to the mentioned standards



www.scmgroup.com/it/
bordatrici_olimpic_k_800#/video



AVAILABLE SOLUTIONS

| | | | | | | | | | | | |
|--------------|-----------|-----------|------------|---|---|--|---|---|---|---|---|
| C | | | | 1 |  |  |  |  |  | | |
| E | | 1F | 1 | 1/2 |  |  |  |  |  | | |
| F | 1F | 1S | 1/2 | 1 |  |  |  |  |  |  | |
| ER2 | | 1F | 1 | 1/2 |  |  |  |  |  |  | |
| FR2 | 1F | 1 | 1/2 |  |  |  |  |  |  |  | |
| T-C | | | 1S | 1 |  |  |  |  |  |  | |
| T-E | | 1F | 1 | 1/2 |  |  |  |  |  |  | |
| T-F | | 1F | 1 | 1/2 |  |  |  |  |  |  |  |
| T-ERL | | | 1S | 1/2 |  |  |  |  |  |  |  |
| T-ERS | 1F | 1S | 1/2 | 1 |  |  |  |  |  |  |  |
| T-FR2 | 1F | 1 | 1/2 |  |  |  |  |  |  |  |  |

THE OPTIONAL GROUPS



 **scm**
 **minimax**
 **scm tecmatic**

 **scm**
 **routech**
 **celaschi**
 **dmc**
 **superfici**
 **sergiani**
 **gabbiani**
 **morbidelli**
 **mahros**
 **stefani**
 **cpc**
 **sag**

 **scmgroup**
 **delmac**
 **scmfonderie**
 **steelmec**
 **hiteco**
 **es**
 **csr**

 **CMS Cms**
wood technology

 **CMS Cms**
advanced materials technology

 **CMS Brembana**
stone technology

 **CMS Brembana**
glass technology

 **CMS CmsPlast**
plastic technology

 **CMS Tecnocut**
waterjet technology

 **CMS Balestrini**

1 large integrated group
18 production sites
30 specialist brands
21 foreign branches
more than 50 years in business
70% exports
350 agents and distributors
365 registered patents
500 engineers
3.000 square metres showroom
10.000 classical and professional
machines made per year
240.000 square metres
of production space



passion **technology** performance
www.scmgroup.com

scm  **group**



The best global partner that is very close to woodworking companies





Rev. n. 01 - 03/2012 - Acanto comunicazione - LifeinPixel



SCM GROUP spa - SCM - Via Casale, 450 - 47826 Villa Verucchio (RN) - Italy
Tel. +39/0541/674111 - Fax +39/0541/674274 - www.scmgroup.com - scm@scmgroup.com