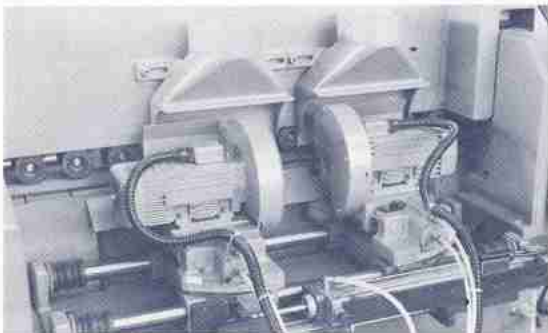


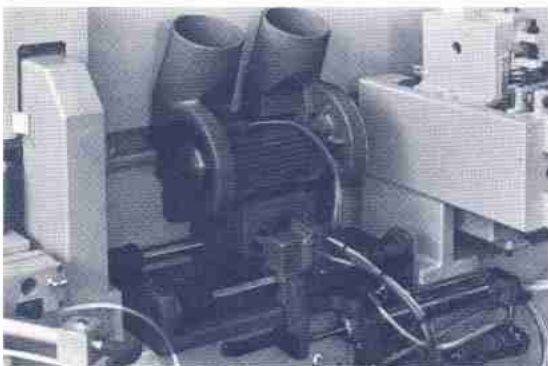
Art. 2124
End trimming unit - Mod. "Y-45"

To 2 motors with 0,8 HP at 12.000 rpm. Horizontal tilting from 0° to 45.



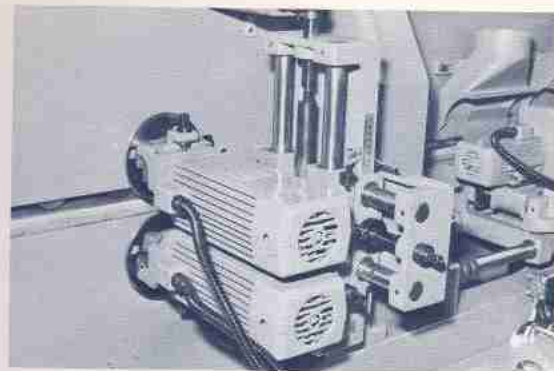
Art. 2125
End trimming unit - Mod. "Y"

They are equipped with high frequency 0,5 HP motors running at 12.000 rpm and are air operated. The longitudinal and transverse movements are independent from each other thus ensuring extremely precise cuts with vernier zero-setting of feelers. They can be horizontally bevelled by 20° to get chamfered cuts.



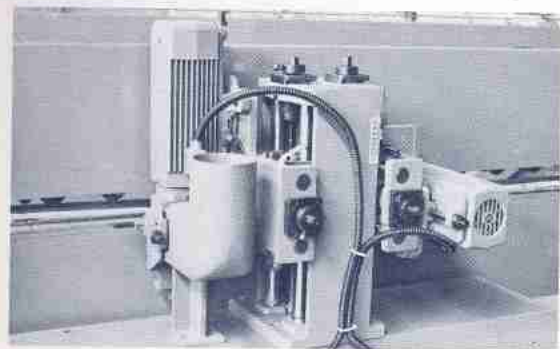
Art. 2126
"T" end trimming unit.

They are equipped with motor HP 0,8 - 12.000 rpm. The longitudinal and transverse movements are independent from each other thus ensuring extremely precis cut.



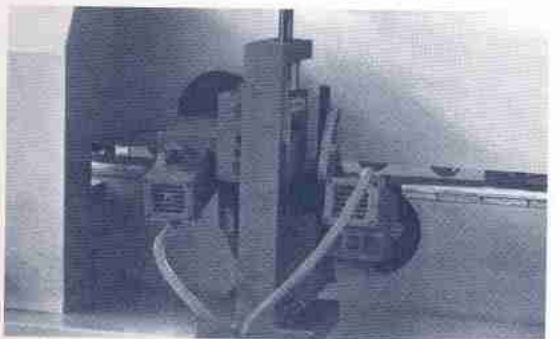
Art. 2127
Edge trimming units - Mod. "R"

They are equipped with high frequency 1,4 or 2,5 HP motors running at 12.000 rpm. The vertical and axial movement is independent and the motor and feeler adjustment is done by decimal verniers.



Art. 2128
Universal lip trimming and moulding units - Mod. "H"

They are equipped with two high frequency 1,4 HP motors or, optionally, with 2,5 HP motors to work as moulding units. Motors are revolving and can therefore lip trim or mould at any angle comprised between 15° and 95° in respect of the horizontal plane.



Art. 2129
Edge trimming units - Mod. "RS"

Are equipped with 0,8 HP high frequency motors running at 12.000 rpm. Have independent vertical and axial movement, They are adjustable from 0° to 45°. Advisable for the trimming of laminated plastic and melamine paper.