

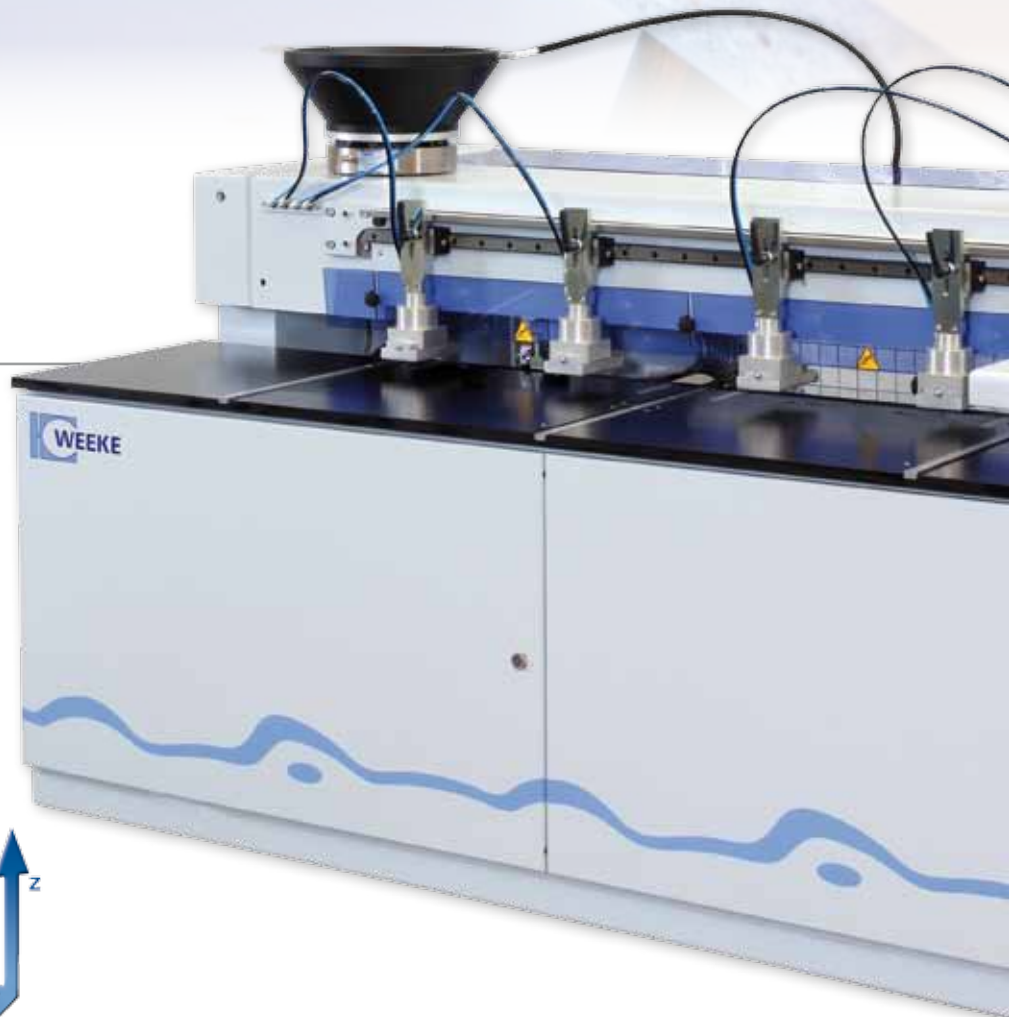
ABD 050 Optimat CNC-Drilling and Dowel Inserting Machine



Horizontal drilling and dowelling with one machine

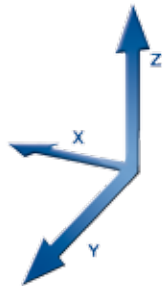
Highlights:

- High-Speed drilling and dowelling
- Processing of up to 4 workpieces
- Simple and rapid material handling
- woodWOP – the programming system of the HOMAG Group



Axis:

- X-direction: CNC-controlled
- Y- and Z-direction: Manually adjustable



ABD 050 Optimat

High-Speed dowel and drill aggregate

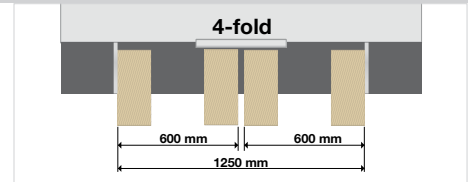
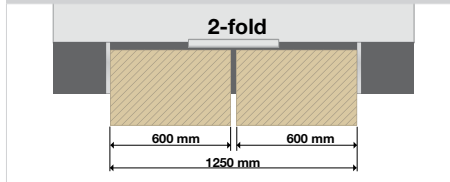


- For precise processing while drilling and dowelling horizontally

ABD 050 Optimat



Alternate operation



ABD 050 Optimat

Clamping cylinder



- Manually adjustable in length and thickness

Center stop



- Pneumatically lowerable

Low pressure pump for glue 1:1



- Double membrane pump 1:1, noise reduced, compact and with low energie consumption

Vibrating feeder



- For automatic dowel feeding

power control PC 85

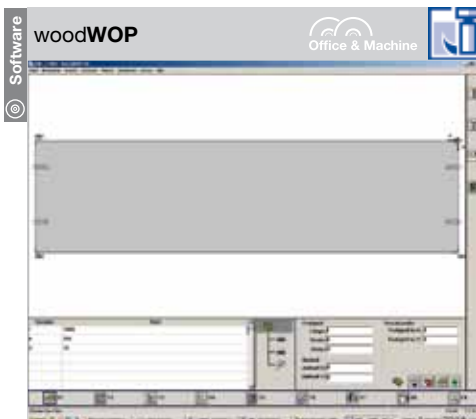


- TFT-Display
- CD-RW device
- Modem
- USB interface

Barcode interface (option)



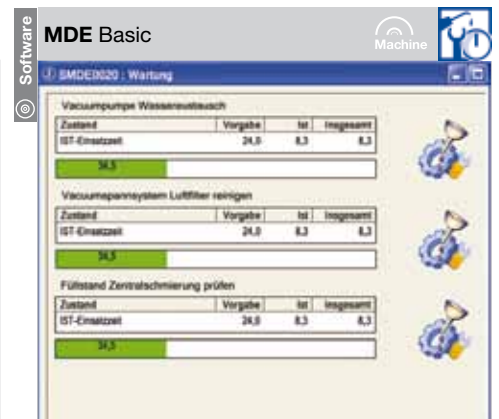
- Barcodescanner / -software



- Modern software based on Windows®
- More than 16.000 installations worldwide



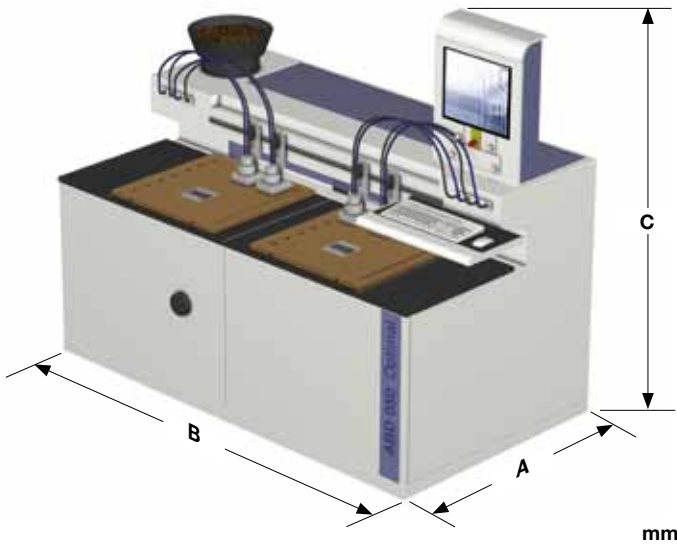
- Modern and simple control of main machine functions through soft keys
- Graphical operator surface



- Machine Data Recording - collecting and evaluating machine conditions via time- and event meter

Technical data

Setting up dimensions



Dimensions	ABD 050
A	1290 mm
B	2570 mm
C	1920 mm



Handling example: ABD 050 and BHX 050 | 055



Workpiece dimensions		ABD 050
Length	mm	20 – 1250
Width	mm	50 – 800
Thickness	mm	10 – 60
Compressed air connection	inch	R 1/2"
Compressed air supply	bar	min. 7
Total connected voltage	kW	appr. 4,5
Extractor connection	mm	ø 80
Extraction speed	m/sec.	30
Supply voltage	A	10
Total machine weight	kg	appr. 1100

You may contact us - WORLDWIDE



- Teleservice possibility via basic internet-connection (TSN-possibility)
- Competent spare parts service
- WEEKE Communication: Up-to-date information at all times: www.weeke.com
- Any questions, new ideas, criticism & praise to: info@weeke.de

Member of the HOMAG Group

Contact



WEEKE Bohrsysteme GmbH
 Benzstrasse 10-16
 33442 Herzebrock-Clarholz
 GERMANY
 Tel.: +49 5245 445-0
 Fax: +49 5245 445-44139
info@weeke.de - www.weeke.de