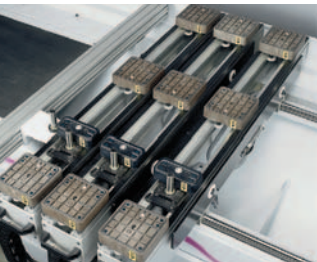


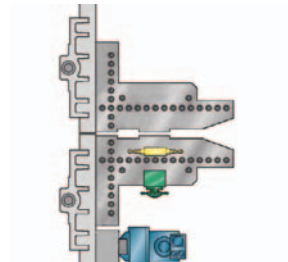
BHC 350 S/2



Vacuum Pod Fixturing System



Quick Change High-Speed Drill Spindles



Machining Head Configuration



PC-based Beckhoff High-Speed Control featuring WoodWOP 5.0



Optional ATC for added flexibility

WEEKE'S BHC 350 S/2 CNC machining center is ideal for high-volume drilling operations such as closet end panels, kitchen cabinets and other commercial casework applications. With 50 vertical drilling spindles and a "split-head" design for the Y-axis, the 350 S/2 can reduce drilling cycle times and significantly increase output. In addition to vertical drilling, the machine is equipped with routing, grooving and horizontal drilling capabilities. The BHC 350 S/2 features an extended working field for parts up to 4' x 12'. It incorporates a simple operator interface, easy programming software and one of the heaviest base weights of any machine in its category. The vacuum pod fixturing system allows quick changeover and easy reconfiguration for many different part sizes. The machine can be equipped with a laser for assisting the operator in quick and accurate placement of the vacuum pods. The machine is also available with other clamping systems such as a flat router table and enhanced vacuum system for nested based manufacturing. Using the latest control technology, the BHC 350 S/2 features a user-friendly Windows operating system, which ensures consistent performance and precision. Solid wood, particleboard, MDF, hard board, plastics and other materials can be used on the machine.

stiles
Your success is our business.

BHC 350 S/2

Working Field 3750mm x 1220mm (147-inches x 48-inches)

Six Vacuum Support Benches with Four Standard Vacuum Pods per Bench
(3) Three at 145 x 145 x 35mm
(1) One at 70 x 145 x 35 mm

Complete Set of Stops in both the Back and Front of the Benches

Modem and Software for Remote Diagnostics

4.5/6.0 kW (6/8 HP) Liquid-Cooled Router Motor Y-axis coverage of 1275mm (50-inch)

50 Vertical Drilling Spindles Y-axis coverage of 1060mm (41.7-inch) for X-axis Spindles
Y-axis coverage of 1252mm (49.3-inch) for Y-axis Spindles

2 Horizontal Drilling Spindles (1+1 X-Axis)

X-Axis Grooving Saw

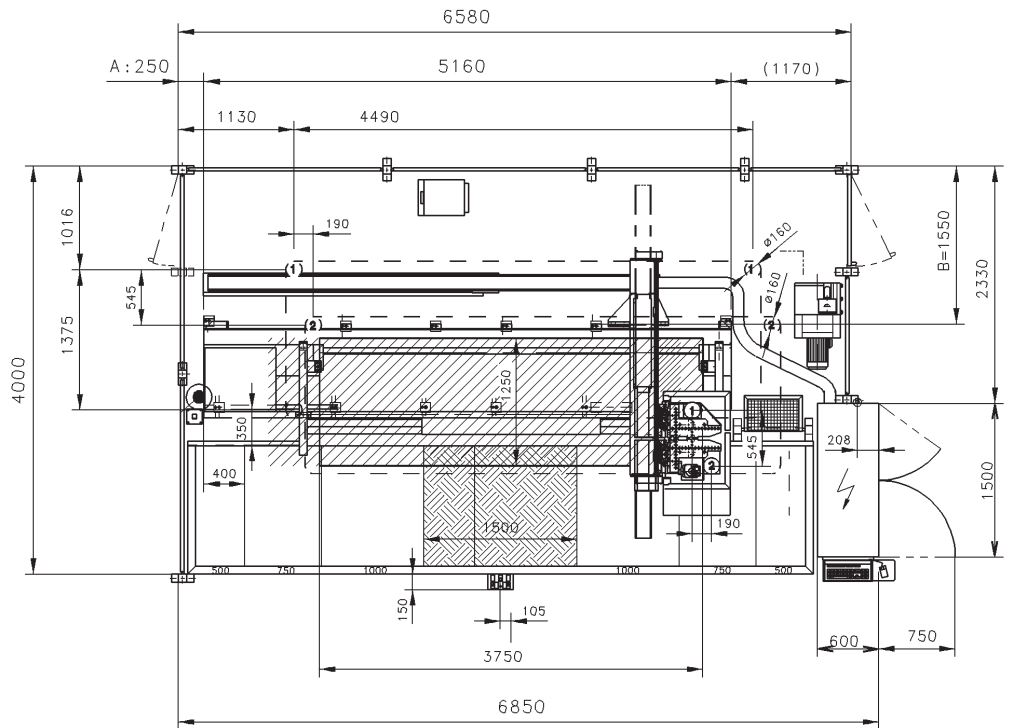
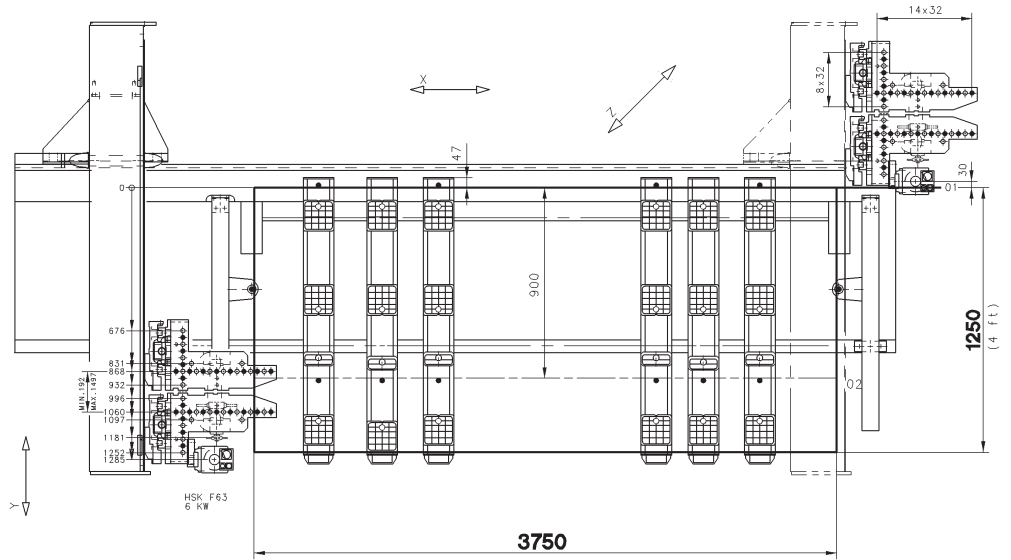
NEW Programmable High-Speed Drill Spindles (1,500 - 7,500 rpm)

NEW Vertical Drill Spindles equipped with quick-change feature AND mechanical lock for depth control

NEW BECKHOFF High-Speed CNC Control with MCC - Windows Operating System

NEW Compact Design with smaller footprint; Control Cabinet installed on left or right side of the machine

NEW WoodWOP 5.0 Programming Software with NC Simulation



stiles
Your success is our business.