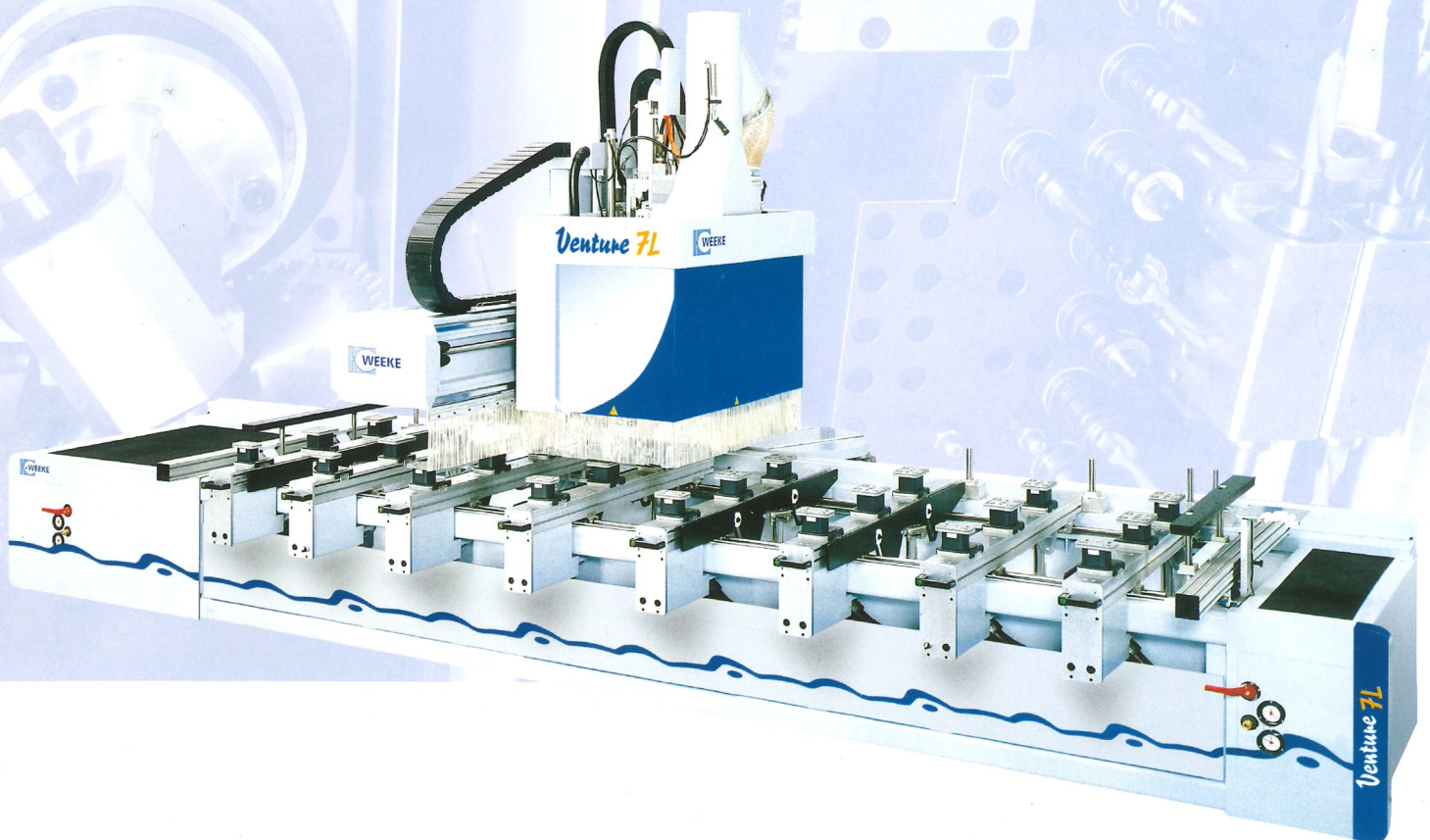


CNC-Processing Center

Venture 7L



2005



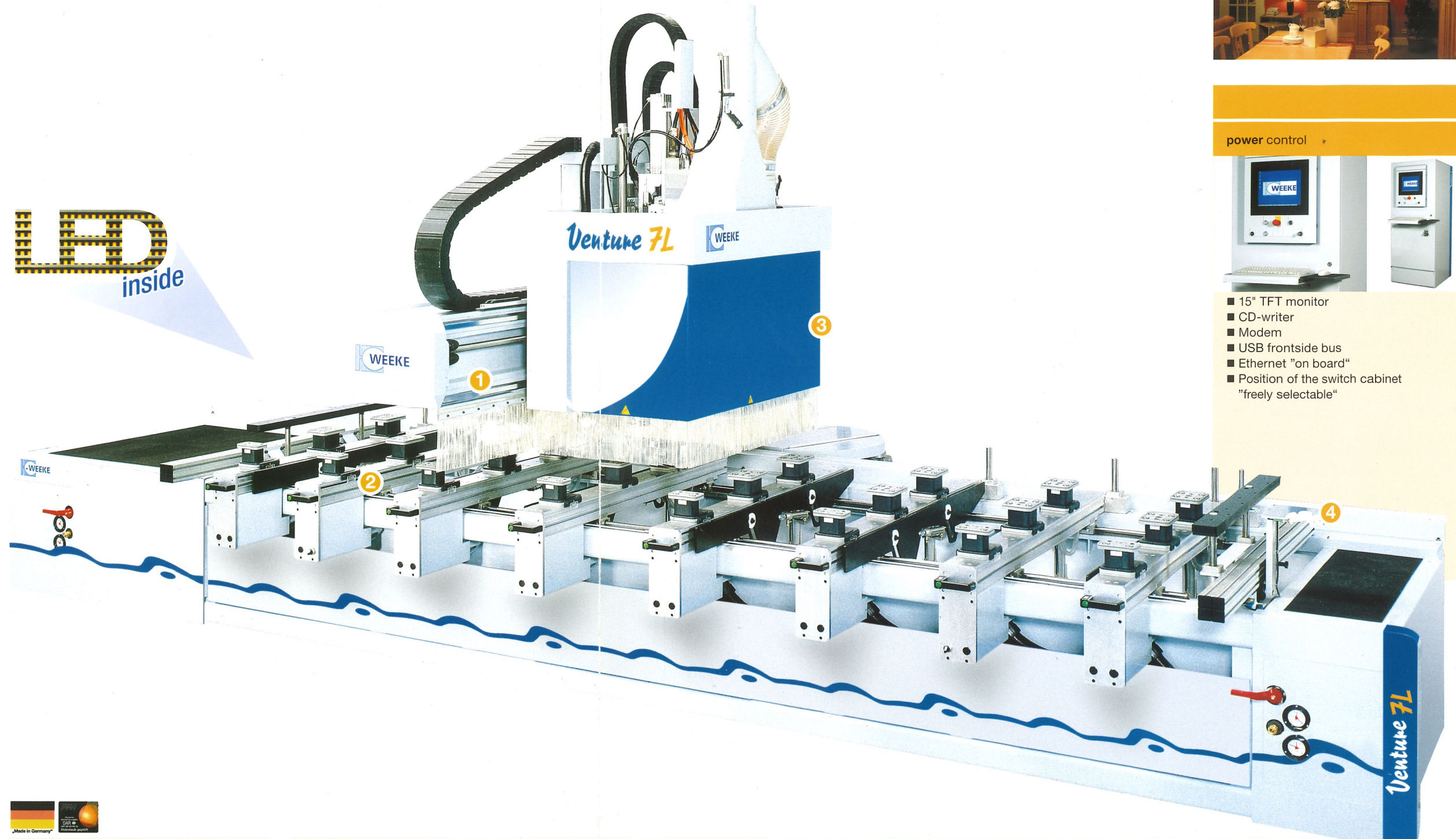
Venture 7L

Working field:
4250 x 1500 x 150 mm

Highlights:

- Routing dimension in Y-direction to max. 1545 mm
- Even under heaviest processing the heavy steel ribs within the frame absorb any resonance and frame flexing
- Time saving and secure positioning of the workpiece consoles and the vacuum cups via LED-system
- An integrated C-axis
- A powerful 12 kW HSK routing spindle
- 2 Z-axes
- Processing is possible up to a workpiece thickness of 150 mm
- 22 tool changing places
- UPS „uninterrupted power supply“ - protects the computer against damages in case of mains interruption. In such a case the computer is powered down to avoid loss of data.

LED
inside



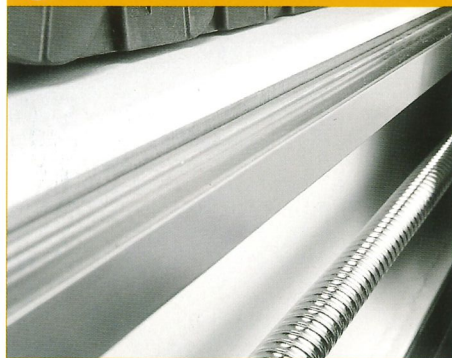
power control



- 15" TFT monitor
- CD-writer
- Modem
- USB frontside bus
- Ethernet "on board"
- Position of the switch cabinet "freely selectable"



1 Linear guiding system



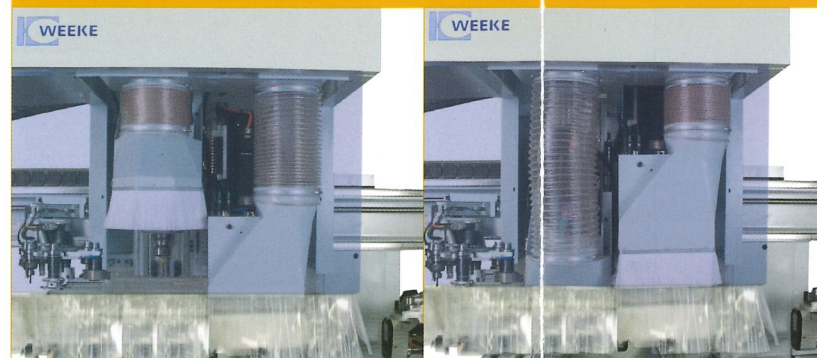
Sealed "long-life" linear guiding system

2 LED-positioning system



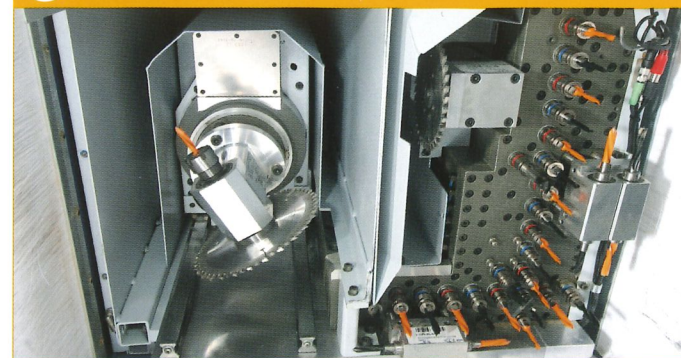
The LED-lights display the correct position of the cups to the operator. Up to 70 % faster positioning.

2 Z-axes



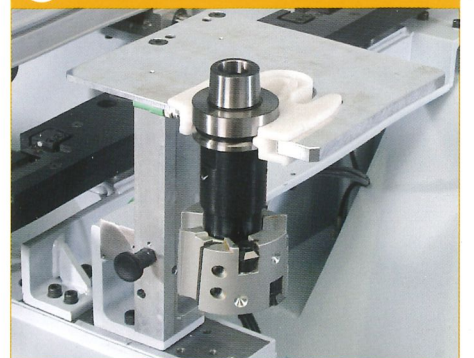
- Effective time saving via parallel tool changing during the drilling procedure
- Offer an optimal dust extraction and a bigger operative range for processing tools

3 Configuration



- 25 vertical drilling spindles ■ 6 horizontal drilling spindles
- 1 routing spindle with 12 kW ■ 1 C-axis with HSK F 63
- 1 grooving saw (Ø 125 mm / 90°)

4 Tool pick-up station



Secure and quick fitting of the tool changer



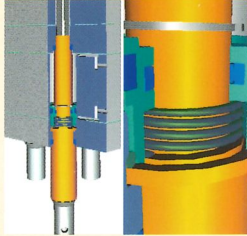
All inclusive – "Standards"

High-Speed spindles



1500 - 7500 RPM
including patented quick change system

Automatic spindle locking system



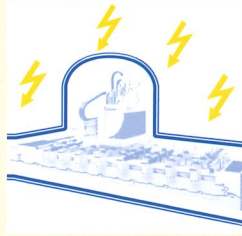
Patented system for exact drilling depth at any time with different materials

Workpiece feeding rail



6 solid feeding rails to ease "sheeting" of heavy workpieces

UPS



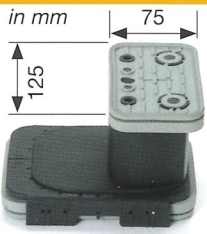
Protects the computer against damages in case of mains interruption

Tool changer



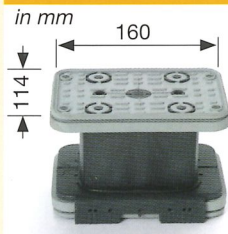
2 fast tool changer:
1 x 14-fold in X-direction and a 8-fold in X- and Y-direction

Vacuum cups



8 narrow vacuum cups

Vacuum cups



16 standard vacuum cups

Tilting stops for laminate overhang



Guarantee simple positioning of panels with laminate overhang

Sealed energy cable



Secure and protected cable guide (X-Y-Z)

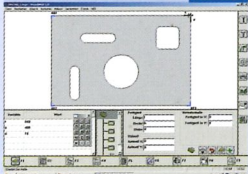
Tool kit



Top equipment - from the very start

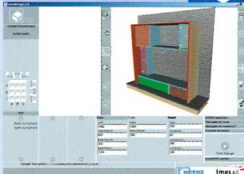
Software

woodWOP



- Modern software based on Windows®
- More than 10.000 installations worldwide

woodDesign



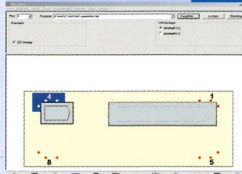
- Simple 3D construction of furniture including a parts list output and export of cutting lists

3D CNC-Simulator



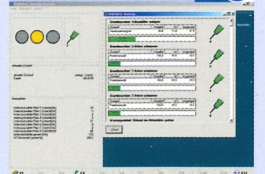
- Simulates the processing in the order it is stored in the NC-program
- Allows time calculation
- Collision check of the vacuum cups

MCC

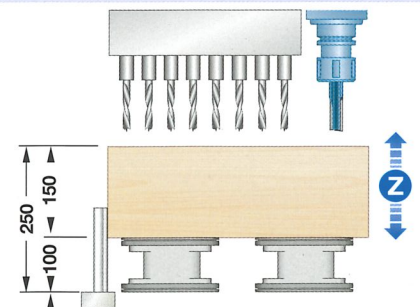
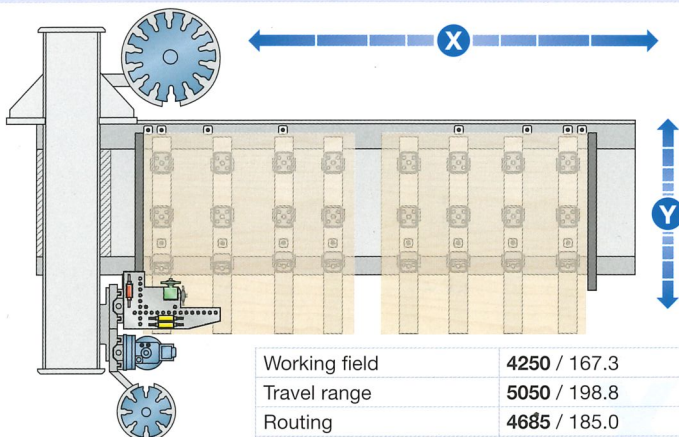


- Modern and simple control of main machine functions through soft keys
- Graphical loading
- Optimized space

MDR



- Machine Data Recording - collecting and evaluating machine states via time meter and event meter



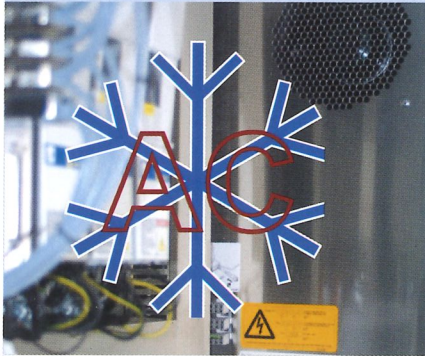
| | | | |
|-----------------------|--------------|-------------|-----------------------------|
| Working field | 4250 / 167.3 | 1500 / 59.0 | 150* / 5.9 |
| Travel range | 5050 / 198.8 | 2150 / 84,7 | 210** / 8.3 (400*** / 15.8) |
| Routing | 4685 / 185.0 | 1545 / 60.8 | 150* / 5.9 |
| Alternating operation | 1950 / 76.8 | | **drilling ***routing |
| Two-field operation | 1570 / 61.8 | mm / inch | |

*considering the utility of the corresponding tool lengths

Venture 7L

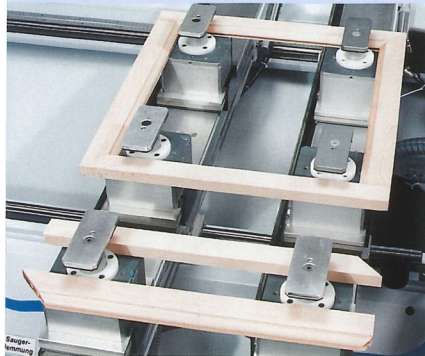
Options

Air-conditioning



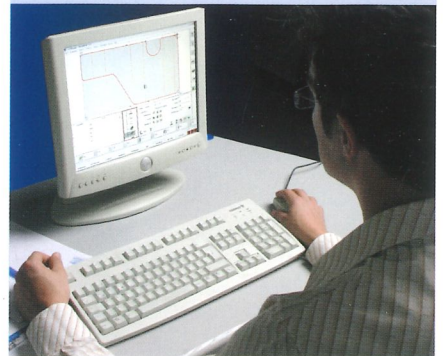
Air-conditioned cabinet

Multi-clamping system



E.g. for frame and narrow parts

Software



■ DXF-postprocessor ■ Barcode software

Pictures may also show options

Adapter aggregates

Drilling/Routing/ Sawing, 2 spindles



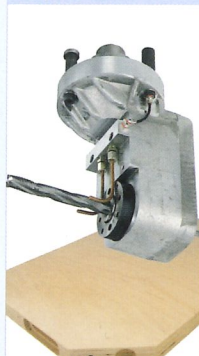
1503

Routing, 4 spindles



1505

Cam box router, Ø 16 mm, 2 spindles



1626

Routing, 2 spindles



1510

Drilling/Sawing, man. inclinable – (0° - 90°)



1515

Drilling/Routing, man. inclinable – (0° - 90°)



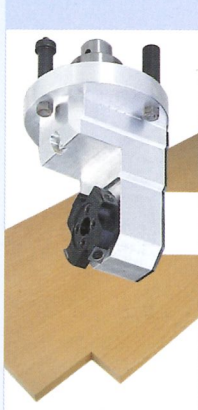
1517

Routing vertical with tracing bell



1550

Corner notching



1555

Underfloor routing



1565

Planning aggregate, horizontal

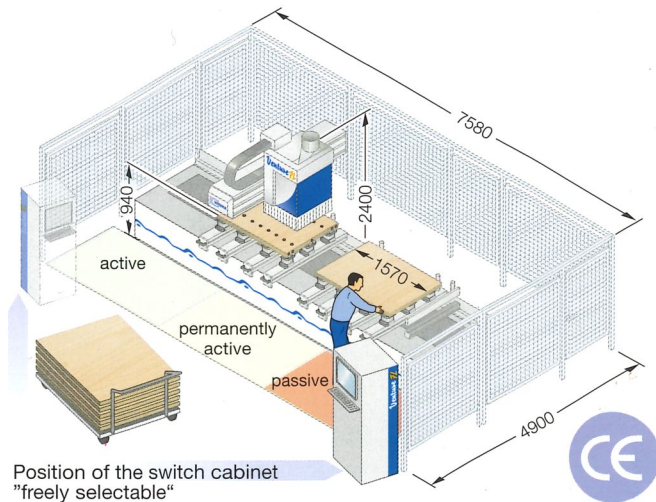
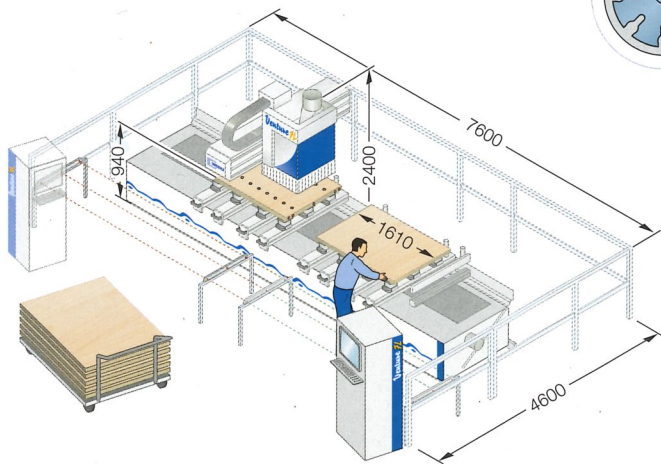
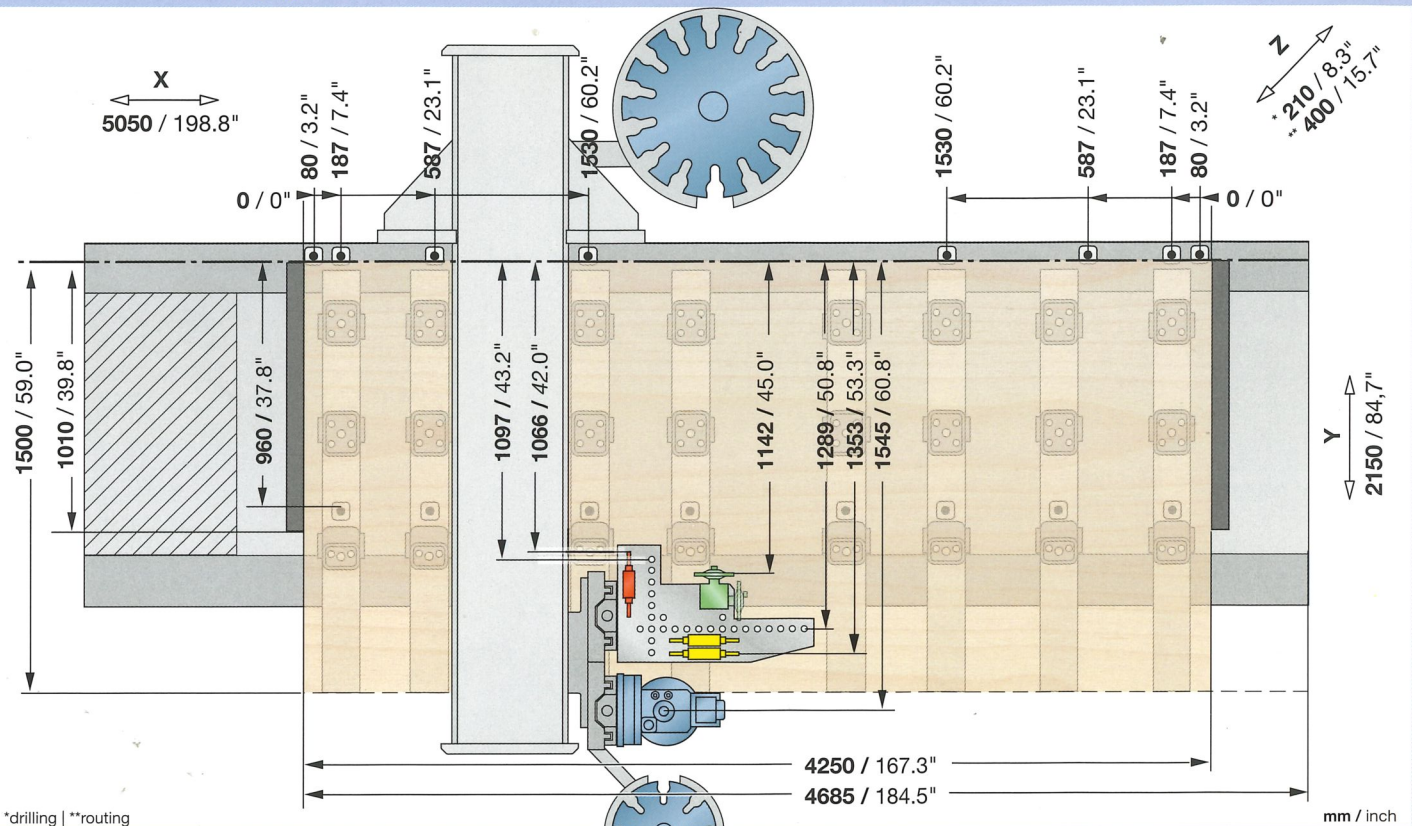


1570

Contact us!

- Teleservice possibility via basic-modem-connection
- Competent spare parts service
- Weeke communication: up-to-date information at all times:
www.weeke.com
- Any questions, new ideas, criticism & praise to:
info@weeke.de

Venture 7L



TECHNICAL DATA

| | | |
|--|-------------------|---------------------|
| Travel range X - Y - Z | mm | 5050-2150-210*400** |
| Rapid traverse speed X - Y - Z | m/min | 80 - 60 - 20 |
| Compressed air connection | inch | R 1/2" |
| Compressed air required | bar | 7 |
| Dust extraction port | mm | Ø 250 |
| Dust extraction volume | m ³ /h | min. 4950 |
| Total machine weight | kg | ca. 6800 |
| Electrical power – total connection load | kW | 22 |
| Switch cabinet L - W - H | mm | 800 - 800 - 1970 |



WEEKE Bohrsysteme GmbH

Benzstraße 10-16
 33442 HERZEBROCK-CLARHOLZ
 GERMANY
 Phone: +49 5245 445-0
 Fax: +49 5245 445-139
 info@weeke.de - www.weeke.com