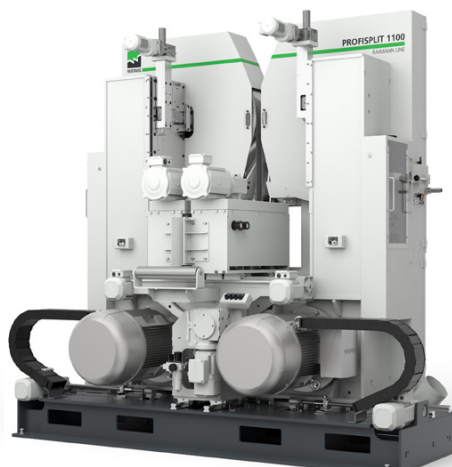
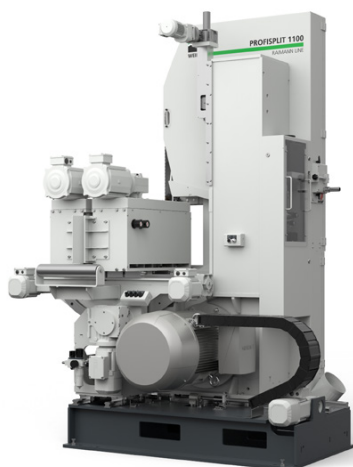
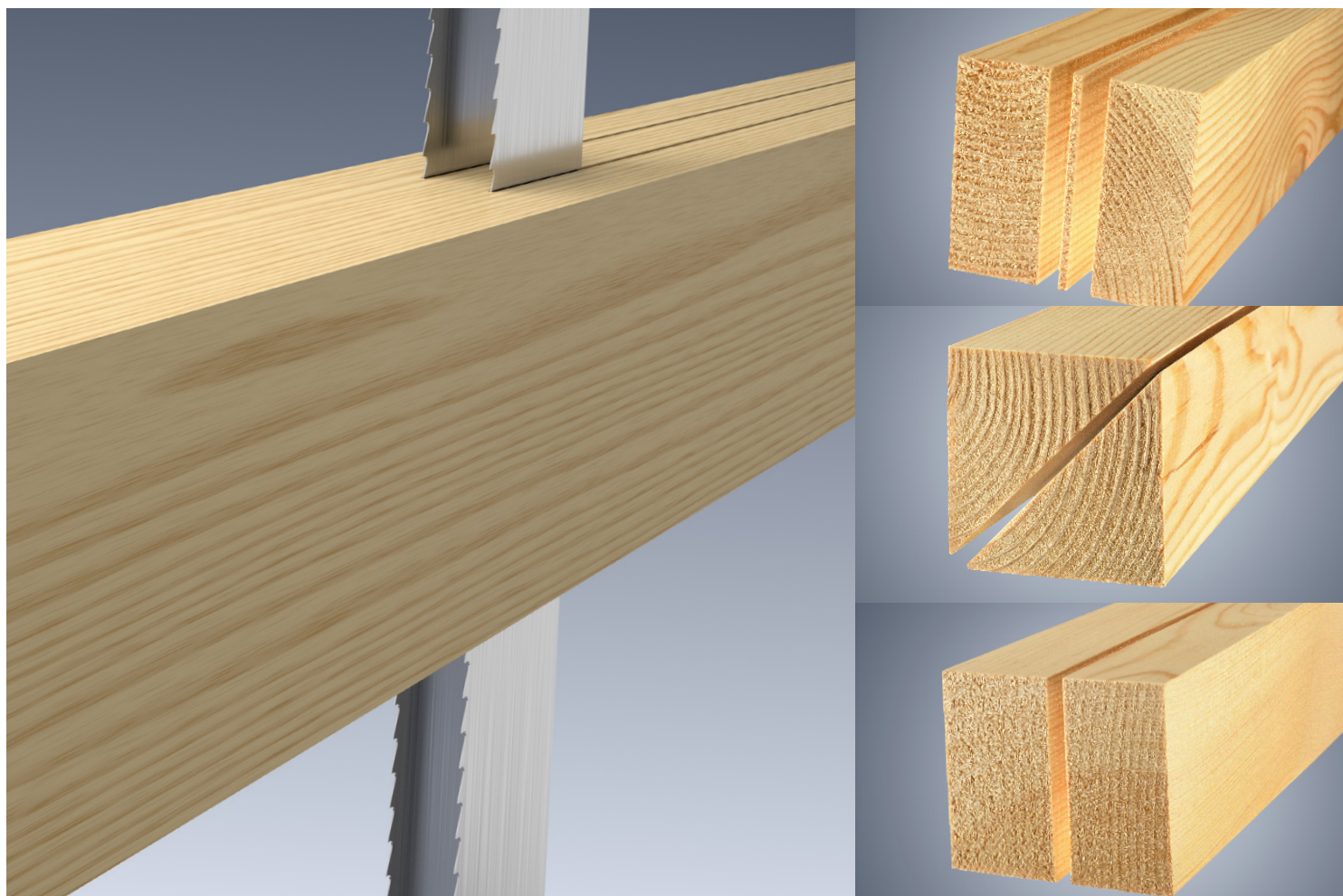


PROFISPLIT 1100

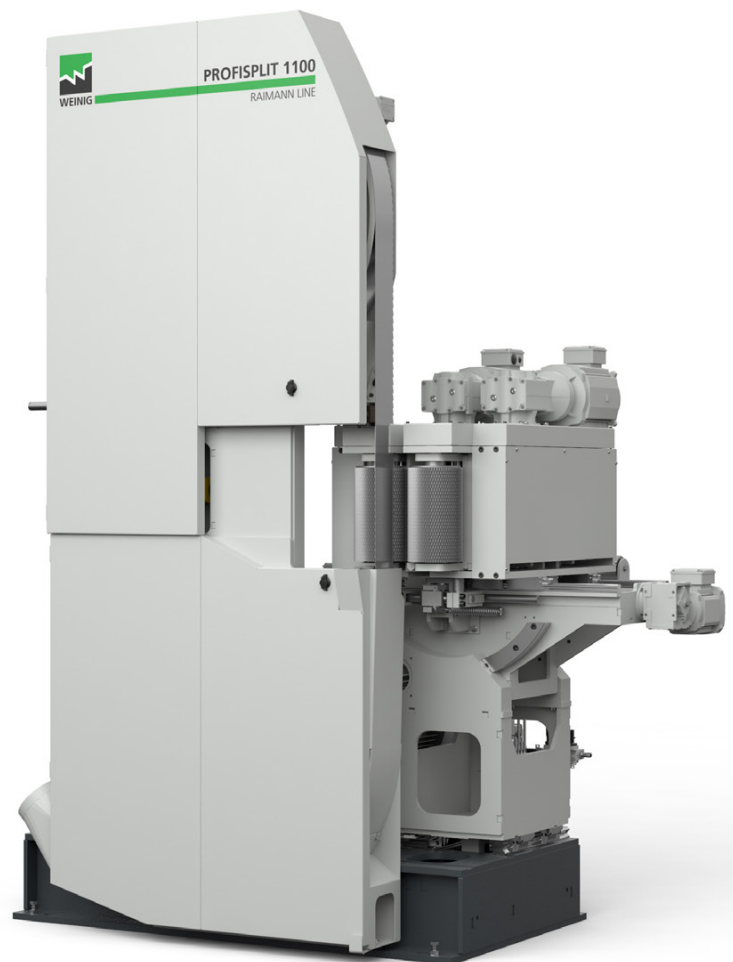
The Flexible Band Re-Saw for Efficient Splitting



ProfiSplit 1100 Band Re-Saw

The new band re-saw ProfiSplit 1100 from the WEINIG "Split" series opens new production opportunities with a wide range of configuration options, in order to also be able to meet your individual requirements. Whether as a high-precision band re-saw, in stand-alone operation or as a high-performance band re-saw in production line operation, WEINIG offers you a specific complete solution. The intelligent PC control system "SplitControl" actively supports the operator. With the freely movable, positionable saw assemblies as well as with the options "center splitting" and "diagonal splitting" you choose how the incoming wood will have to be cut. This results in highest productivity and best wood yield on a completely new level.

- Reliable and durable due to the sturdy design, even under extreme loads
- Optimal timber yield due to the center cut.
- Flexibility due to the freely selectable fence side
- Highest productivity with feed speeds up to 80 m/min
- Shorter set-up times with the double-sided (TWIN) positionable saw assemblies
- High dimensional accuracy due to the precise saw band guidance and monitoring
- Increased efficiency - Due to the high-grip feed rollers a reliable material transport is guaranteed
- High cutting quality due to the variable saw band speed



High-precision saw-band guidings

The solid saw-band guiding ensures a precise cut and high product quality in continuous operation. The upper guide can be conveniently and easily adapted to different cutting heights via SplitControl. The positioning is achieved with a robust guide carriage. This ensures a constantly high cutting quality unaffected from material thickness.



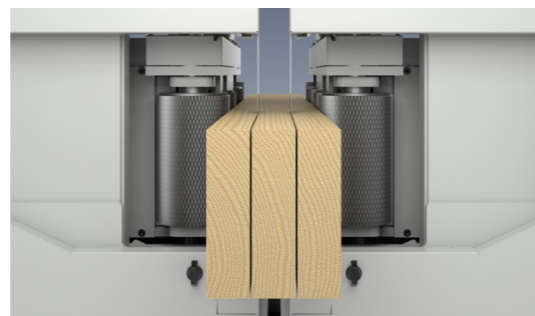
Saw-band tensioning and position monitoring

The hydraulic saw band tensioning is simply controlled via SplitControl. During operation the saw-band tension will be automatically monitored and readjusted. Beyond that, also the saw band position is supervised and automatically corrected. Process reliability and high cutting quality are thus guaranteed.



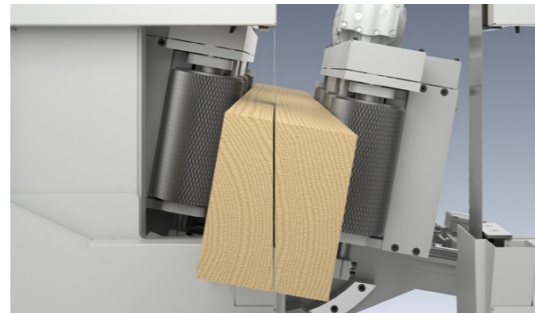
Operating mode center splitting

In the center splitting operating mode, the workpieces are continuously centered in the feed device. Thus dimensional tolerances in the incoming material are evenly distributed to the exterior products. This avoids faulty parts due to undersizing and a constant high wood yield will be guaranteed. You can switch to split-cut mode at any time. The ProfiSplit 1100 optimizes according to your wishes.



Operating mode diagonal splitting

For diagonal splitting, the feed device can be swivelled in the range 0 - 45°. The angle is simply entered via SplitControl, directly on the touch panel. Due to the sturdy and precise swivel frame, exact grade adjustments in the 1/10 range are no problem. The working height remains constant during the swivelling process, so that no height adjustment of the infeed-outfeed mechanization is necessary.



Band re-saw control „SplitControl“

The new PC control SplitControl allows an intuitive operation. With its 21.5" display and an easy-to-understand user interface, every operator becomes an expert within short time. Due to the clear and structured structure all necessary information can be seen at a glance. Be more effective with SplitControl than ever before.



Integration into automated systems

The ProfiSplit 1100 is ideally suited for integration into automated installations and planing lines. Coordinated with the customers' requirements WEINIG offers a variety of destacking, feeding, stacking and packaging solutions for the "Split" series. Also the integration into existing plants is no problem.



Overview table ProfiSplit 1100: standards and options

	● Standard	○ Option
Max. splitting height	400 mm	
Max. width of work piece	400 mm	
Max. splitting width right/left-hand side of saw band	200 mm	
Min. splitting width right/left-hand side of saw band	10 mm	
Feed speed	5 - 40 m/Min	10 - 80 m/Min
Saw wheel, diameter	1080 mm	
Saw wheel, width	100 mm	
Saw band speed	40 m/Sek	20- 60 m/Sek
Saw motor	30 kW	37 kW
Weight SINGLE / TWIN	6000 / 8000 Kg	
Dimensions TWIN length x width x height	1,45 x 3,60 x 2,85	
Working height	1180 mm	
Touchscreen control „SplitControl“	●	
Spray mist device		○
Center splitting		○
Diagonal splitting		○
Safety cabin (sound and dust protection)		○
Mechanization systems		○

Subject to technical changes. Statements and illustrations in this brochure also include optional equipment that is not part of the standard range of delivery. Protective covers partially removed for photography.

WEINIG service: Very close to customers



Customer relations are good. But we have a better word for it: WEINIG service. Supported by people who want to share their enthusiasm for wood with others. And when experts start talking together, a solution is not far away. This is why WEINIG service focuses on dialog with you, on outstanding training and a local support presence. The global WEINIG service network is so densely spread like no other in the sector. For you this means easy communication in your own language and rapid help. Whether by telephone or by a technician on site. We are here for you when you need it. You can order any spare part you need via the hotline for rapid delivery - even old models.

You will be advised in detail by a professional WEINIG expert in your country. In our individually tailored training programs you can find out how to optimally exploit the capabilities of your machine. Our specialists are always open to your production tasks.

- Subsidiaries in all continents of the globe
- Local WEINIG expert who speaks your language
- Mobile team of over 300 service technicians
- Spare parts via the hotline
- Professional advice by specialists via the hotline
- 6 day service
- Individually tailored training program
- Service agreements on request
- International ExpoCenter
- Financing to suit your needs

PROFISPLIT 1100



WEINIG GROUP

sales@weinig.com
www.weinig.com