

FV 2 / 3 / 4 / 6 VERTICALE TRAY OVEN

The vertical tray dryer with stationary bars, **FV**, carries out all three stages of flash-off, drying and cooling, for lacquers needing long dwell times, in the smallest possible machine footprint.

The trays containing the panels to be dried are superimposed and execute the movements rise, transfer and descent; the number of rise and descent chambers is variable, depending on the required drying times.

The oven **FV has been present in the market** for many years, but its modernity is confirmed by:

- Capacity of flexible storage due to the possibility to choose the number of chambers and trays,
- Extremely simple and reliable in operation,
- Inexpensive investment.



PLUS + BENEFIT

- Panel infeeding and outfeeding are carried out by two motorized, PVC coated roller conveyors; the bar trays are introduced between the rollers, lifting or depositing the panels during their programmed rise or descent movements.
- The dead time of the tray transfer is compensated for by the accelerating the panels at infeed and outfeed.
- Line infeed and outfeed can be parallel or on opposite sides; it is also possible to have more, where the line is required to execute different cycles.
- The ventilation is composed in such a way as to achieve the stages of flash-off, drying and cooling in divided areas with the view to achieve maximum en-

- ergy savings (recirculation in flash-off – air transferred from cooling to flash-off – adjustable capacities and air speeds)
- Ventilation is lengthwise to allow highest uniformity of speed and air temperature and thus constant drying conditions.
- Interior structure and walls in insulating material. Sliding and swing doors to allow complete inspection.

FV 2 / 3 / 4 / 6 VERTICALE TRAY OVEN

WOOD LINE

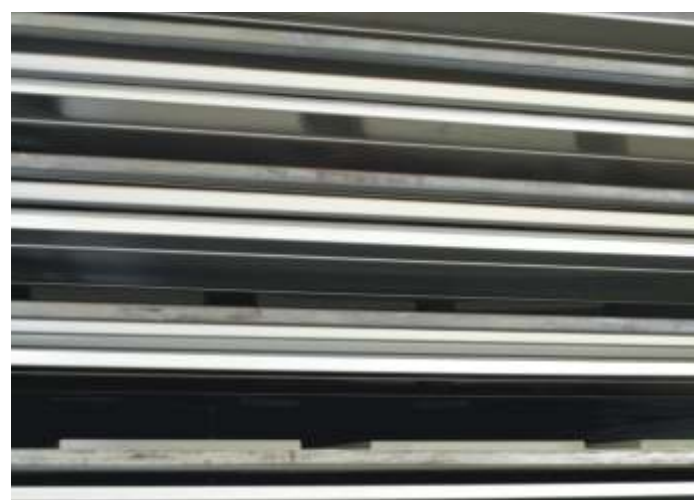
AVAILABLE OPTION

1. Vertical dryer comprising: 2 – 3 (one empty) – 4 – 6 chambers.
2. In standard versions the number of trays varies from 46 (FV 2) to 134 (FV 6).
3. RAP = Heating of flash-off area.
4. Thermostat and automatic by-pass in cooling area.
5. Tray covering to obtain best surface finishing.
6. Dampers for exhaust closure, operating electrically.
7. Frost protection, with sensor and automatic damper.



TECHNICAL FEATURES

- Work width dryer: 1300 mm.
- Tray working length: 3400 – 4400 mm.
- Bar and roller distance: 133 – 158 mm.
- Passage working height: max. 70 mm.
- Tray capacity: max 75 kg.



TECHNICAL SPECIFICATION

	Electric power kW	Compressed air NI/min	Thermar power kcal/h	Air make-up mc/h	Air with solvent exhaust mc/h
FV 2 RR	21	92	-	10000	20000
FV 2 AE	17	92	130000	8000	9000
FV 2 AER	17	92	130000	8000 - 12000	9000
FV 3 AER	18,3	120	130000	8000 - 12000	9000
FV 4 AER	25,9	120	260000	0 - 10000	18000
FV 6 AER	34,3	206	390000	0 - 16000	27000
Option 3 - RAP	-	-	+ 80000	-	-

Pursuing the constant improvement of its production range, the manufacturer reserves the right of modifying its products without notice. Additionally, the information, the technical specifications, the drawings and the pictures shown in this brochure serve just as an indication and are not binding for the manufacturer who expressly reserves the right of changing this brochure without notice.

www.ceflafinishing.com



A company of Cefla Finishing Group