



system bt

Calibrating, sanding and finishing modular sanding centres with lower and upper machining units



system bt

calibrating, sanding and finishing modular sanding centres with lower and upper machining units

The new System BT calibrating and sanding line with lower and upper units has been designed for large companies in the woodworking sector that want to maximise productivity, without compromising quality.

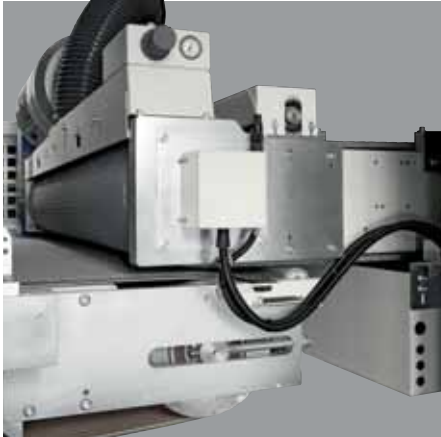
- **HIGH PRODUCTIVITY TO MEET ANY CHALLENGE**
- **WIDE RANGE OF TECHNICAL SOLUTIONS AND MACHINING UNITS**
- **RELIABILITY AND SAFETY FOR INTENSIVE USES**





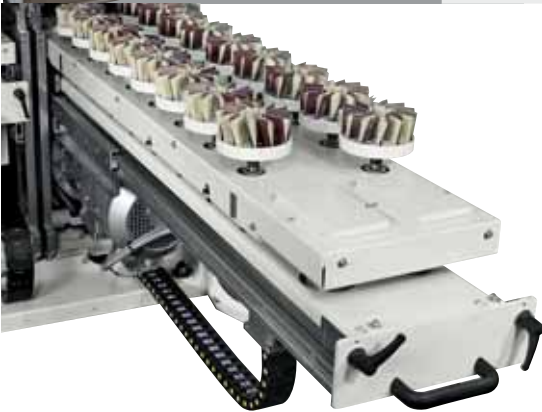
system bt

calibrating, sanding and finishing modular sanding centres with lower and upper machining units



HIGH PRODUCTIVITY

Double productivity by combining a structure with lower units and upper units in a single machine.



BROAD VERSATILITY

No machining limits for both sides of the panel, with the possibility of installing any machining unit on both supporting structures.



MACHINING RELIABILITY

Excellent finishing results even in the most demanding conditions due to the sturdy supporting structure and the innovative pneumatic steel hold-down system of the pressure bars that ensures the workpieces are held down constantly and perfectly during machining.



system bt44 1350

configuration for sanding door and window frames and cupboard doors

This machine is the **most advanced solution currently available on the market** for machining cupboard doors and assembled door and window frames. Sanding, surface fibre removal and precision finishing of the workpiece can all be performed with one single passage in the machine.





system bt44 1350

configuration for sanding door and window frames and cupboard doors



The “Planetario” machining unit achieves **extremely homogeneous and high quality surface finishes**, due to the multi-direction action of machining, that does not leave any directional abrasion marks..

Maximum speed in all tool change operations, cleaning and routine maintenance, due to the innovative **lateral unit removal system** with telescopic supports on prism guides.

The **quick release** system that secures the units to the base allows users to **change sanding belts simply and quickly** whilst guaranteeing maximum stability and safety during any type of machining.



system bt33 1350

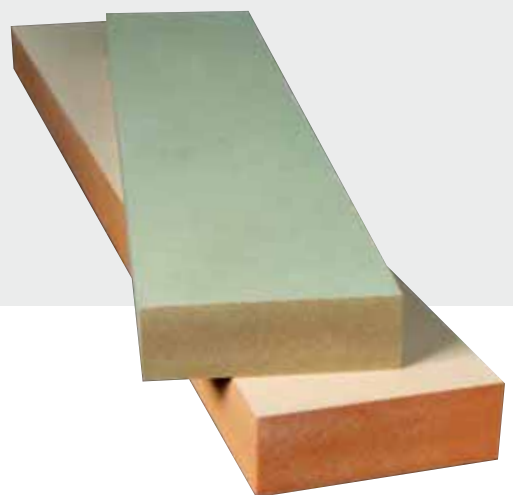
configuration for considerable stock removal on solid wood and expanded materials such as polyurethane and other similar materials





The System BT lines fitted with the lower and upper “CHP” planer can achieve **considerable stock removal in a single passage** with limited motor power and guarantees an excellent finish.

They are ideal for calibrating solid wood blockboard panels or panels in expanded material, such as polyurethane and other similar materials.



system bt33 1350

configuration for considerable stock removal on solid wood and expanded materials

The “CHP” planer can achieve **considerable stock removal on solid wood** (up to 3 mm), with limited powered motors (25-30 HP). The lateral planer removal system simplifies cleaning and maintenance operations.



The heavy **section presser** at the unit infed with kickback stops guarantees **maximum reliability and safety in the workpiece feeding**, and allows various workpieces with **different thicknesses to be machined at the same time**.

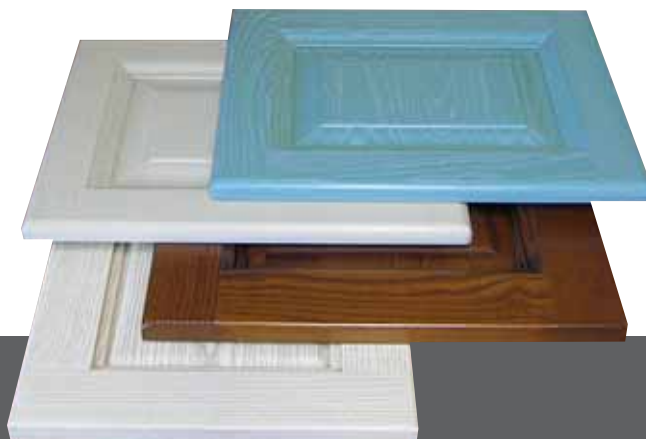
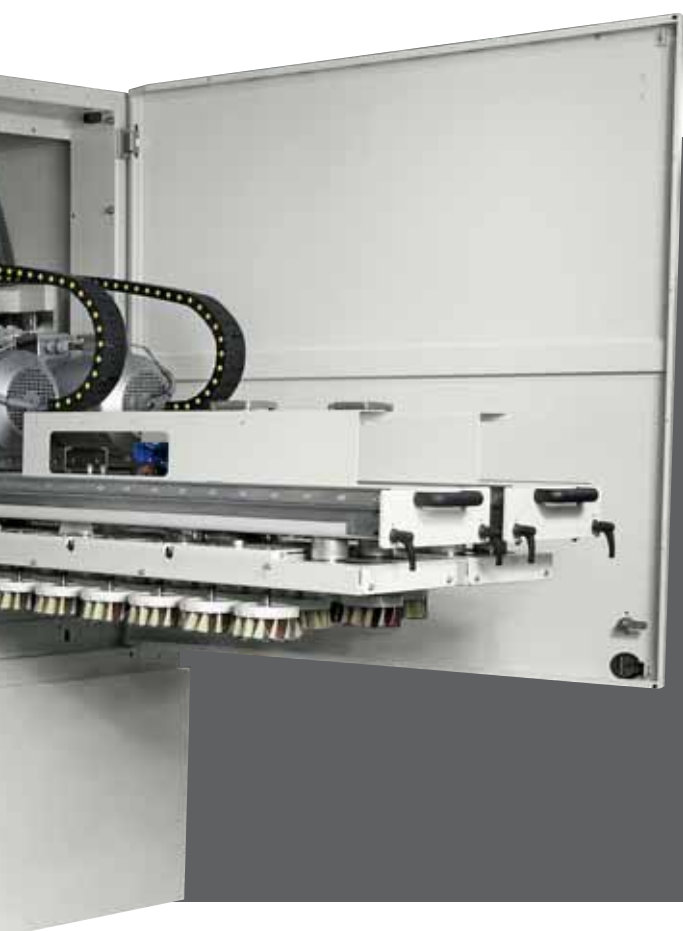


The modules with lower units are fitted with air jet cleaning nozzles that remove any dust residue that is deposited during machining on the bottom of the machine. Each **machining unit is fitted with two extractor hoods**: one for dust generated in the work area and one to extract dust residue from the bottom of the machine.

system bt23 1350

configuration for sanding and brushing furniture parts





The sanding line with **lower and upper double row translating discs** is ideal for those looking for **impeccable finishing quality** in all details of the product. The double row disc units can be used to sand bas-reliefs of machined parts, shave edges, remove surface fibres and achieve structured finishes with differing intensities.

The user is free to compose the line by integrating it with wide belt sanders to achieve a compact solution that, in high volume production environments, can **process pieces in a single machine passage**.

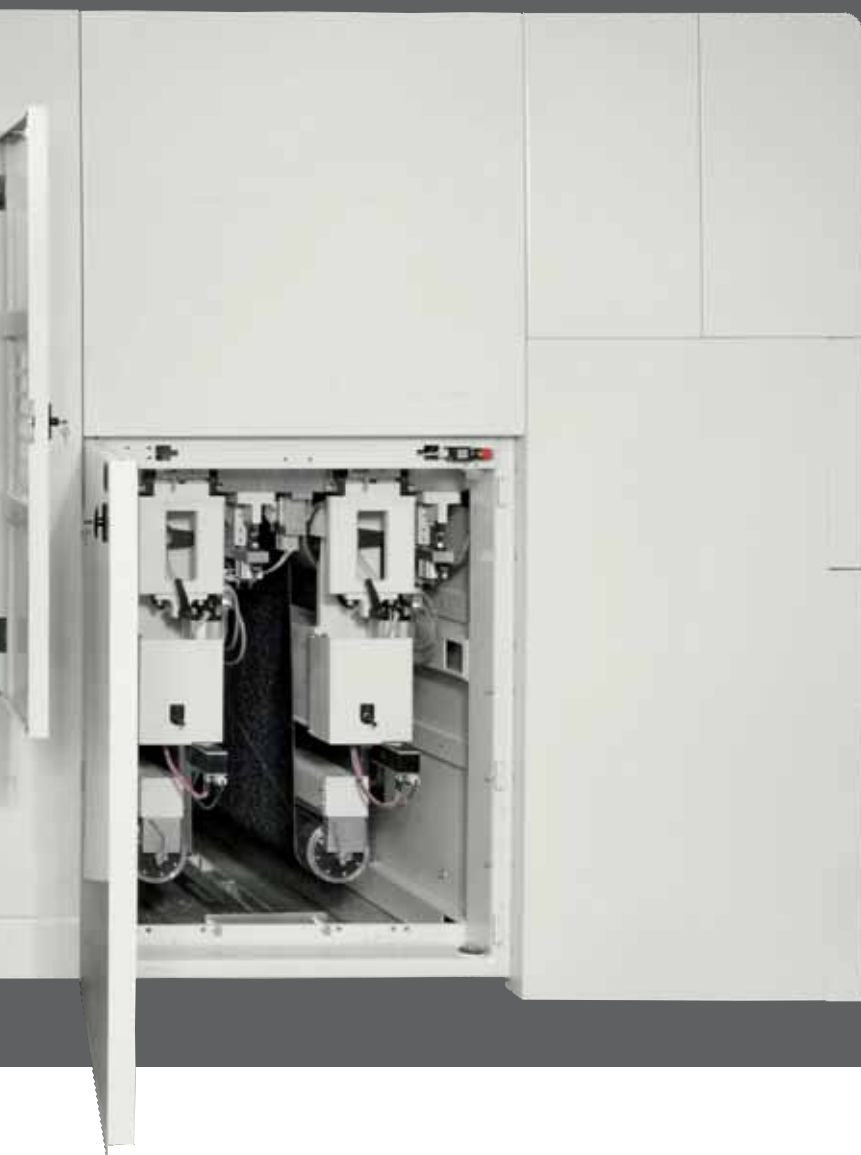
The double row of discs ensures higher machining results and the presser roller positioned between the rows of discs feeds and support in lower machines, short pieces such as disassembled frame parts of cupboard doors, bed components and similar pieces.



system bt24 1650

configuration for calibrating-sanding fibrocement panels



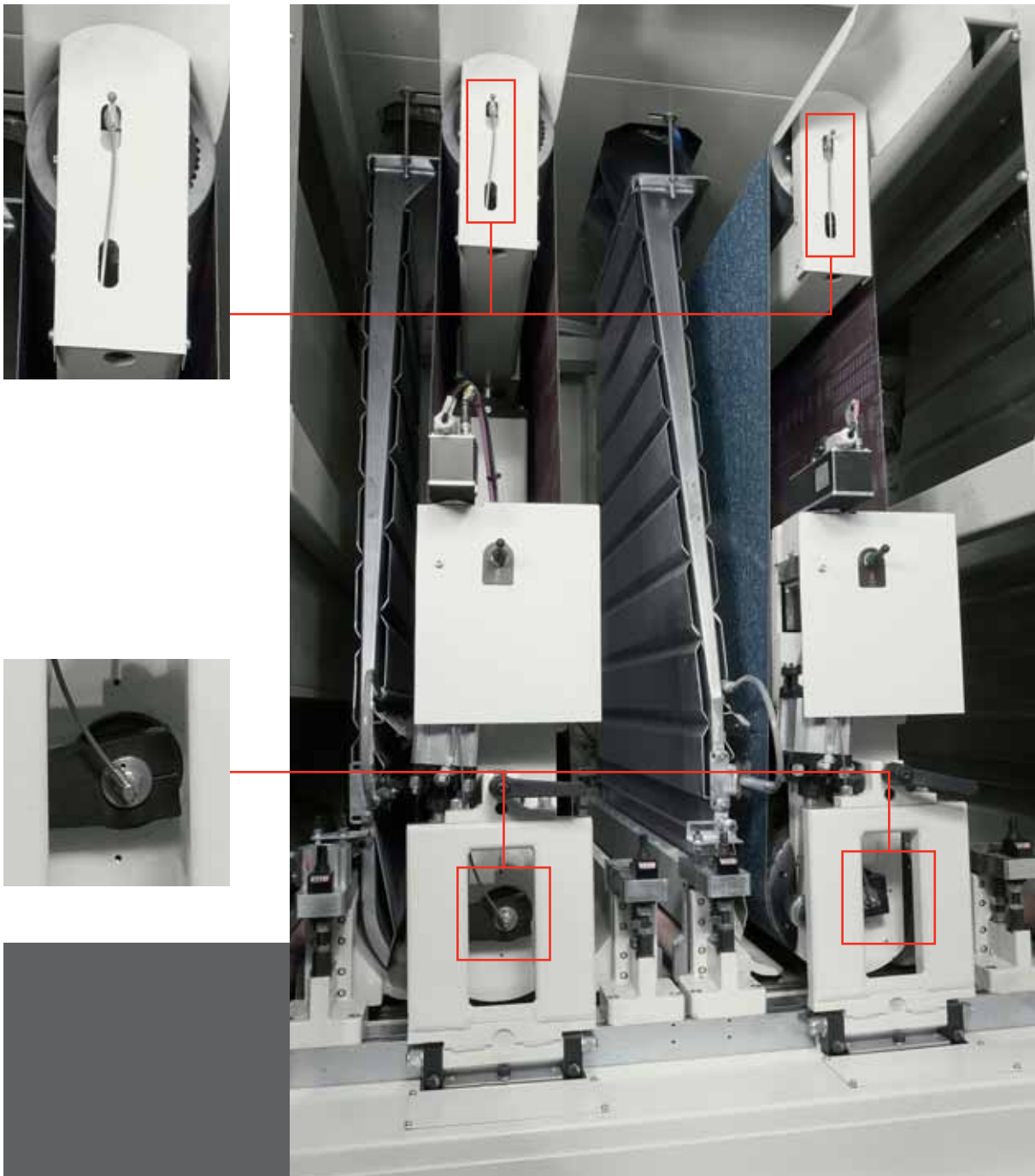


“System” is a **Heavy Duty** category calibrating-sanding unit ideal for **removing large removal amounts** from large format panels such as plywood and high density fibrocement panels.

The machine is fitted with 3250mm long sanding belts used in intensive production lines that require maximum performance and only a few machine stoppages for routine maintenance operations.

system bt24 1650

configuration for calibrating-sanding fibrocement panels



The System range of sanders for machining fibrocement is fitted with special devices that ensure these **machines are particularly resistant to dust corrosion**:

- high capacity extractor hoods that ensure the removal of machining dust;
- compressed air cleaning nozzles to screen the bearings;
- covering panels to protect the belts and drive pulleys of the motors;
- hard wearing tempered steel inserts on the work table.



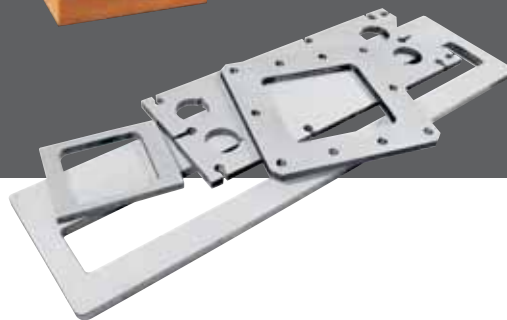
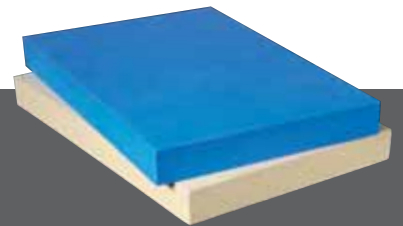
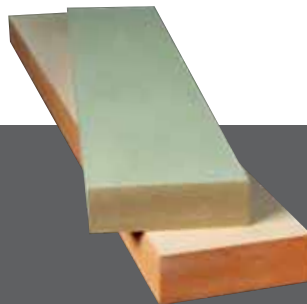
The high power motors (up to 90 kW) and the wide choice of machining units allow users to achieve various finishing effects even at fast production speeds such as 60 m/min



dmc system

Solutions for machining materials in general

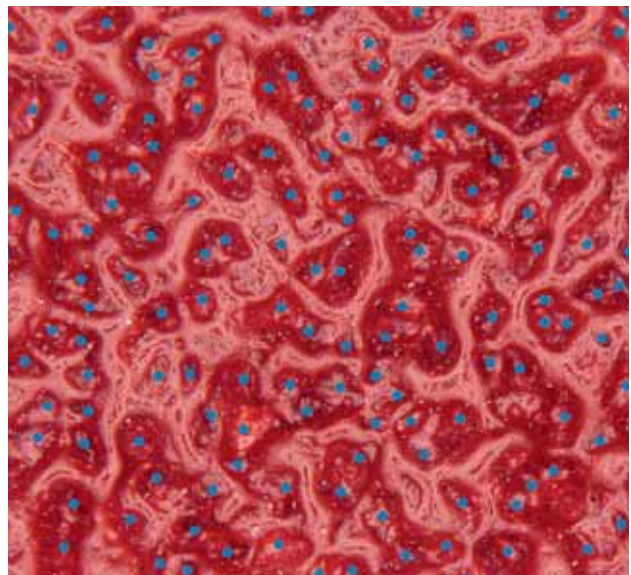
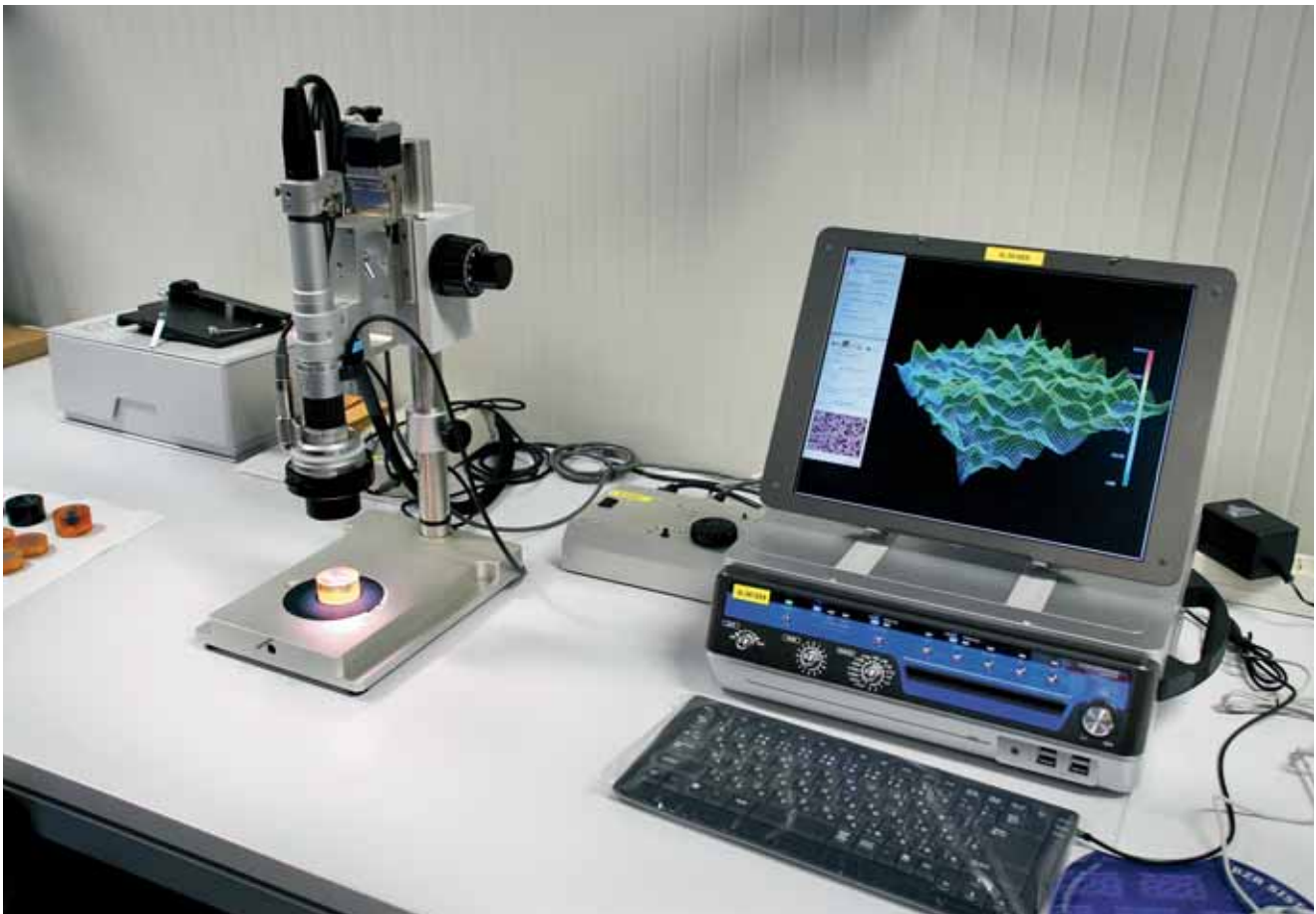
Dmc Hi Tech is a centre of excellence carrying out research on sanding equipment and materials processed by flexible sanding machines. It also researches finishes on innovative materials such as Corian, inert materials, quartz, polyurethane, rock wool fibrocement, etc.



The operational unit is managed by **highly specialised personnel** and it is fitted with **sophisticated instruments** to analyse the materials being processed and the various types of sanding materials. Thanks to the numerous demonstration machines the centre **can carry out any machining test** to provide clients with fast and detailed information on the best way to resolve any issues with processes using flexible sanding machines and how to achieve the **latest finishes requested by the market**.



Investing in a DMC calibrating and sanding centre does not mean simply buying a machine. It means becoming a partner with one of the most important Italian industrial groups and having access to exclusive services offered by the advanced technological research centre that the company has recently set up in Thiene (Vicenza).



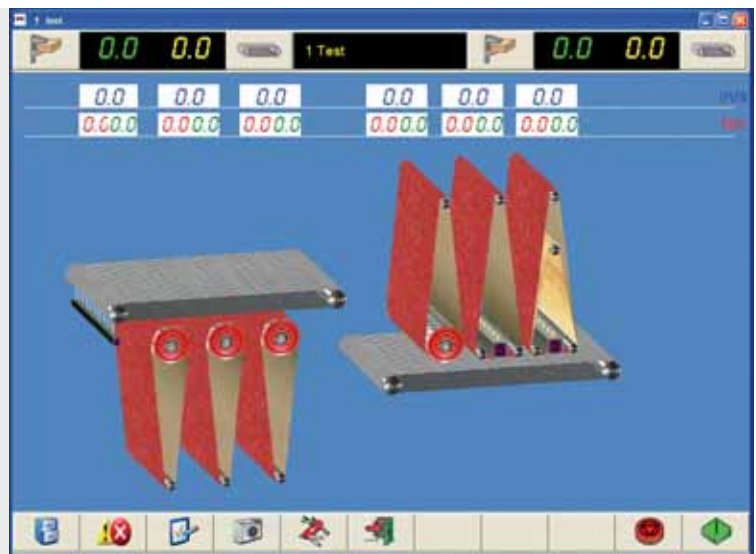
system

Hydra controls

The entire production process is simple and fast to manage thanks to the “Hydra” advanced electronic management system. Users can monitor all the devices and launch the work programs for both machines in the line from a single control panel.



The “Hydra V-Pad” control, fitted as standard on all the System sanders, is used to set all the operating parameters on the touch screen, and to check in real time the correct operation of the machine.



 **scm**
 **minimax**
 **scm**
 **routech**
 **celaschi**
 **dmc**
 **superfici**
 **sergiani**
 **gabbiani**
 **morbidelli**
 **mahros**
 **stefani**
 **cpc**
 **scmgroup**
engineering

1 large integrated group
18 production sites
19 foreign branches
14 specialist brands
 more than **60** years in business
80% exports
350 agents and dealers
390 registered patents
500 support technicians
3.000 square metres of showroom
10.000 classical and professional
 machines manufactured per year
240.000 square metres
 of production space



passion**technology**performance
www.scmgroup.com

scm  **group**

The technical specifications can vary based on the composition selected. For illustrative purposes certain photos show machines complete with accessories. The technical specifications can be changed without warning and the changes do not affect the safety required by the EC standards.





SCM GROUP SpA DMC - Via Casale 450 - 47826 Villa Verucchio (RN) - Italy
Tel. +39/0541/674110 - Fax +39/0541/674235 - www.scmgroup.com - dmc@scmgroup.com



00L0241811C