

FELDER®

structura 60.02

GIVE YOUR
WORKPIECE
A NEW FACE



FELDER®



structura 60.02

Give your workpiece a new face!



Solid wood



Panel material



Plastic



structura 60.02

- » Brush height: 3–200 mm
- » Brush width: 650 mm
- » Steel brush brushing aggregate, Tynex brush brushing aggregate
- » Cutting speed 1,000 rpm

The solid machine chassis of the robust structura brushing machine offers maximum stability. With a working width of 650 mm and a variable adjustable infeed height of 3 to 200 mm, the machine is also suitable for larger workpiece requirements. The single sided mounting of the aggregates enables the processing of extra wide workpieces.

... Your decision for Felder, a risk-free decision

- » The right machine for every budget
- » Complete reliability in professional use
- » Tailor made machine solutions
- » High quality cast iron machine table and aggregates
- » Innovative detail solutions derived from 65 years of experience - already included in the standard configuration
- » First class manufacturing and finishing standards
- » Intuitive application concepts
- » Modern, distinct design
- » Quality and precision from AUSTRIA
- » Powerful and efficient
- » Complete package: Comprehensive service support

The most important highlights at a glance



Machine chassis open to one side for extra wide workpieces

The solid machine chassis of the robust structura brushing machine offers maximum stability. The single sided mounting of the aggregates enables the processing of extra wide workpieces.



Through feed height of 3–200 mm

With a working width of 650 mm and a continuously adjustable infeed height from 3 to 200 mm, the machine is perfectly equipped for large challenges. Optional 250 mm



Oscillation of the brushes (optional)

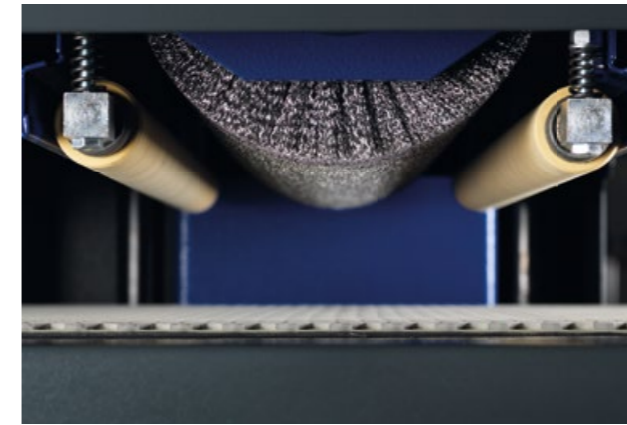
The oscillation is particularly suited for facilitating the smooth and fine structuring of transverse wood surfaces and for creating special effects in the wood structure.



Control

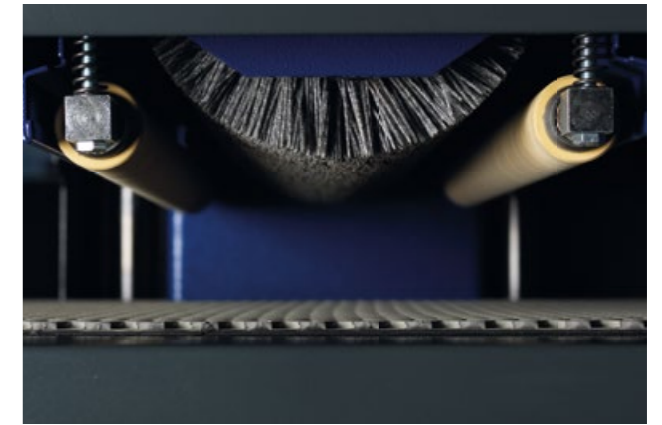
The clearly structured and intuitive operating control panel offers maximum operating comfort for maximum productivity.

Details



Steel brush aggregate

Both of the brushing units are driven by powerful 4 kW (5.5 hp) motors rotating in the opposite direction to the workpiece feed. The first aggregate is equipped as standard with a steel brush (D=200 mm). The electrical height adjustment and the manual fine adjustment of the 2nd brush unit make it possible to adjust to the required depth of cut quickly and accurately.



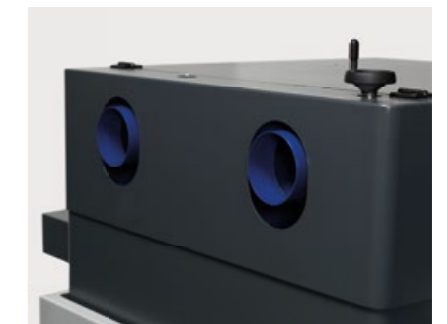
Tynex brush aggregate

The second aggregate is equipped as standard with a Tynex brush (D=200mm K60). The electrical height adjustment and the manual fine adjustment of the 2nd brush unit make it possible to adjust to the required depth of cut quickly and accurately. Both of the brushing units are driven by powerful 4 kW (5.5 hp) motors rotating in the opposite direction to the workpiece feed.

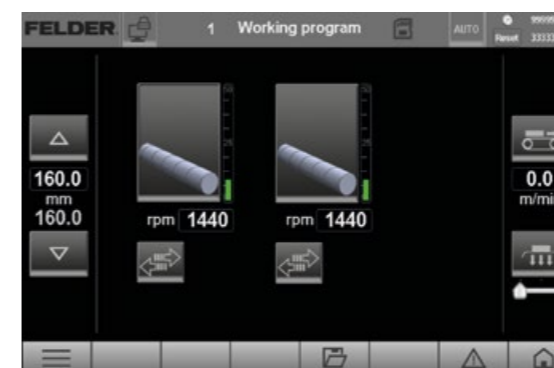


Variable feed speed adjustment for optimum working results

The infeed with a table height of 900 mm and a continuous feeding belt with a web structure has an adjustable speed of 2.5–10 m/min.



Dust Extraction



(Symbolic image with extra equipment)

7" Touchscreen control (optional)

The clearly structured and intuitive 7" colour touch screen provides maximum comfort and productivity at the touch of a button. The available machine functions are displayed graphically and can be selected as required.

- » 100 program memory spaces
- » Maintenance intervals
- » Plain text error messages
- » Ammeter for load monitoring

Technical specifications

Electrics	structura 60.02
001 3x 400 V motor voltage	S
002 3x 230 V motor voltage	O
004 50 Hz motor frequency	S
005 60 Hz motor frequency	O
36 Switch contact for gate control (price/piece)	O

Control systems	
59 Control panel with 7" colour touch screen	O
- Plain text error messages	S
- Maintenance intervals	S

Feed table	
19 Fold away working table on the infeed side, L=1,000mm	O
20 Fold away working table on the outfeed side, L=1,000mm	O
21 motorised in & outfeed function including repeat control for several work processes (#19/#20)	O
27 Oscillation control brush aggregate, stroke 12mm, 60 oscillations / min	O
28 Opening height 250mm instead of 200mm	O
- Automatic feed belt centring	S
- Electric height control incl. fine adjustment from the control panel	S
- Conveyor belt without a joint	S
- Constant feeding height - fixed table, 900 mm	S
- Variable feed speed adjustment from 2.5–10 m/min adjusted from the control panel using an inverter	S

1. Brush aggregate	
22 Motor power 5.5kW instead of 4kW	O
23 Var. cutting speed 250–1,500 rpm	O
- Steel brush D= 200 mm L= 700 mm	O

2. Brush aggregate	
- 1 motor with 4 kW (5.5 HP)	S
24 Motor power 5.5kW instead of 4kW	O
25 Var. cutting speed 250–1,500 rpm	O
- Function operation in counter rotation	S
- Mechanically pre-stressed rubber pressure rollers	S
- Cutting speed 1,000 rpm	S
- Tynex brush K60 D= 200mm L= 700mm	S

General	structura 60.02
- Dimensions (L x W x H inch)	1,455 x 1,070 x 1,250
- Extraction connection in mm	2 x 120
- Compressed air requirement	6
- Brush width in mm	650
- Brush height in mm	3–200 (250)
- Weight kg (with standard configuration)	850

Important accessories	
- EM-07124430 – Tynex brush K60 (plastic core)	O
- EM-07124440 – steel brush (plastic core)	O
- EM-07124710 – Basic body for abrasive brush for structura 60.02, Ø200 mm L 650 mm	O
- EM-SPA2067565 – Set of 20 Tampico strips for insertion on chassis K150	O

Transport	
221 Container transport preparation	O

Product range

Sliding Table Panel Saws

K 945 S K 740 S K 740 professional K 700 S K 700 professional K 700 K 540 S K 500 S K 500 professional K 500

Spindle Moulders

F 900 M F 900 Z F 700 M F 700 Z F 500 MS F 500 M

Saw-Shapers

KF 700 S professional KF 700 professional KF 700 KF 500 professional KF 500

Planers

AD 951 AD 941 AD 741 AD 531 A 951 L A 941 D 951 D 963

Combination machines

CF 741 S professional CF 741 professional CF 741 CF 531 professional CF 531

Bandsaws

FB 940 RS FB 740 RS FB 940 S/SW FB 740 S/SW FB 940/840 FB 740/640 FB 710 FB 610 FB 510

Dowel Boring Machine, Drilling Machine and Horizontal Mortiser

FD 29 professional FD 21 professional FD 250

Heated Veneer Presses

MVP 31.14 flex

Wide Belt Sanding Machines

FW 1102 perform FW 1102 classic FW 950 classic FW 850 classic

Brushing Machine

structura 60.02 structura 40.02

Belt and Edge Sanders

FS 722 FS 900 KF FS 900 K FS 700 K

Edgebanders

G 560 / G 580 classic G 500 EX G 480 G 380 G 360 G 330 G 263 G 220 ForKa 300 S eco KV 925

Vertical panel saw

KV 925

Extraction Units & Briquetting Presses

RL 350 RL 300 RL 250 RL 200 RL 160 RL 140 RL 125 FBP 50/60/70 AF 22-D200 AF 22 Mobil/Stand/Wandmontage AF 16 AF 14 AF 12

FELDER®

FELDER Quality and precision in a nutshell

Since 1956, a guarantee for perfect results with excellent ease of use and reliability in regular professional use. Woodworkers are always enthusiastic about the individual and solid solutions for small and mid-sized businesses.

FELDER GROUP

KR-Felder-Straße 1
A-6060 HALL in Tirol

🇬🇧 Tel. +44 1908 635000
www.felder.uk
[Contact](#)

🇮🇪 Tel. +353 906625756
www.felder.ie
[Contact](#)

🇮🇳 Tel. 1800 274 3040
www.felder.in
[Contact](#)

🌐 Tel. +43 5223 58500
www.felder.int
[Contact](#)