

# Simply better – right from the start.

**HE HOMAG**

**Our panel dividing saws**  
SAWTEQ B-130

**YOUR SOLUTION**





## The SAWTEQ B-130 panel dividing saw – precision at an unrivaled price

The smallest HOMAG panel dividing saw, the SAWTEQ B-130 doesn't cost much more than a well-equipped table saw but provides a much more precise, efficient and fast cutting process. This is ensured by proven technologies as well as a saw concept that is consistently aligned with trade practice. In short: the SAWTEQ B-130 makes moving up into the world of precision production easy by giving you exactly the right saw.

### YOUR SOLUTION

### MORE AT HOMAG.COM



SAWTEQ B-130

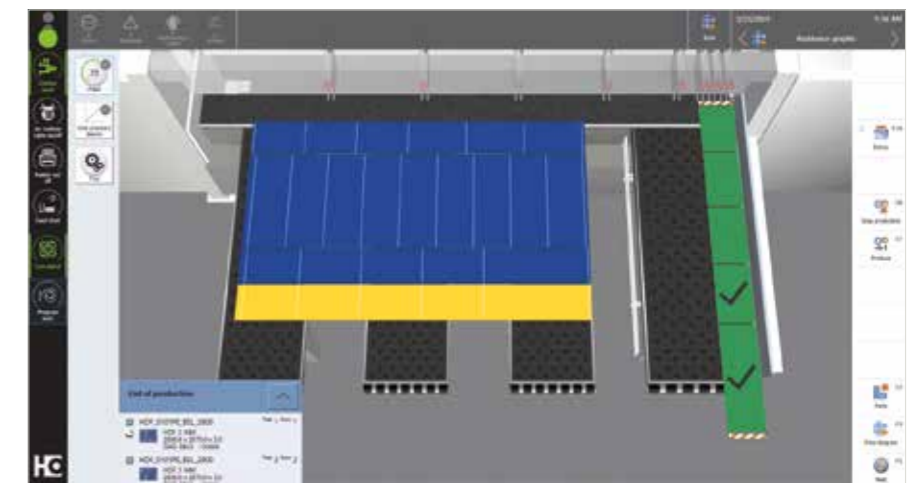
### CONTENTS

- 04 Software
- 10 SAWTEQ B-130
- 12 Standard features
- 16 Optional features
- 21 Technical data
- 22 Service



## CADmatic 5 – intuitive to operate and open for digital networking

CADmatic 5 is the state-of-the-art, high-performance saw control system from HOMAG. A wide range of functions and easy to handle. This is ensured thanks to the intuitive operating concept and clear administrative functions. What's more, CADmatic 5 is open for communication with other machines and software solutions.



### CADmatic 5 – the change in perspective

The latest generation of the HOMAG saw control system has a new assistance graphic that clearly shows the machine operator all the steps in order. Compared to the previous process graphic that showed all the work steps of the saw 1:1 (and can still be called up if required), this new graphic represents a 180-degree change in perspective!

### Highlights:

- The 3D assistance graphic supports the operator directly at the saw and is intuitive to operate, which shortens the training period and reduces errors to a minimum
- This results in efficient processes and a steady output
- 21" full-HD multi-touch display in widescreen format is easy to use by swiping, scrolling and zooming
- Uniform operating concept thanks to the powerTouch user interface (see powerTouch page 6)
- All HOMAG saws with CADmatic 5 are automatically tapio-ready

**Find out more in the "CADmatic" brochure.**

## What's the difference? The software!

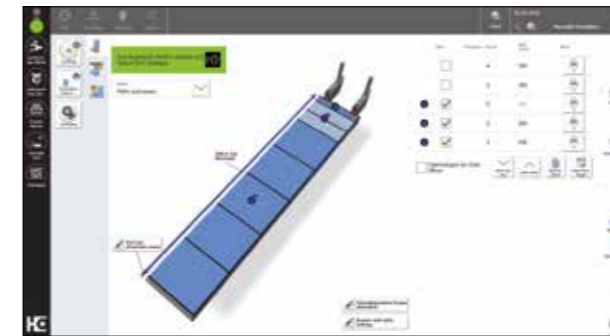
It efficiently integrates the machine into the production process. This results in seamless, intelligently networked processes from start to finish. In short: the right software unlocks new value-added potential. That is what makes it so important.

## The next generation of powerTouch: **powerTouch2**

Faster, clearer, easier to use: enjoy the benefits of our further improved powerTouch user interface. We have optimized our standardized operating concept and further adapted it to our customers' needs. You can now control your HOMAG machines more quickly and more intuitively. The new, modern design is clearly structured. The innovative touch operation is designed to enable you to get the desired result easily and comfortably.



Our successful powerTouch philosophy – **simple, standardized, ergonomic, evolutionary** – systematically enhanced



### **Clearer structure**

The structure of the powerTouch2 screen is even clearer. You only see the information that is relevant for you. The important points at a glance – but you still have all the details. All in a fresh, attractive design.



### **Even faster**

With the new powerTouch generation, you can enter information at your machine even more quickly. Compared to the previous version, you can achieve a time saving of up to 30%. This is possible thanks to new features, such as automatic word completion and a pop-up keyboard that can be kept open, and Windows-like functions, such as the option of selecting common actions directly via the Start button.



### **More comfortable**

We have also improved the traffic light dialog and the "Start" menu. When you press and hold the program icon, not only are the possible actions displayed, you can also access and activate them directly. Operation is therefore immediate and you do not lose any time opening applications. What's more, illustrations and additional information can also be displayed for the applications, instead of simple program icons. This also provides more transparency and avoids unnecessary navigation into applications.

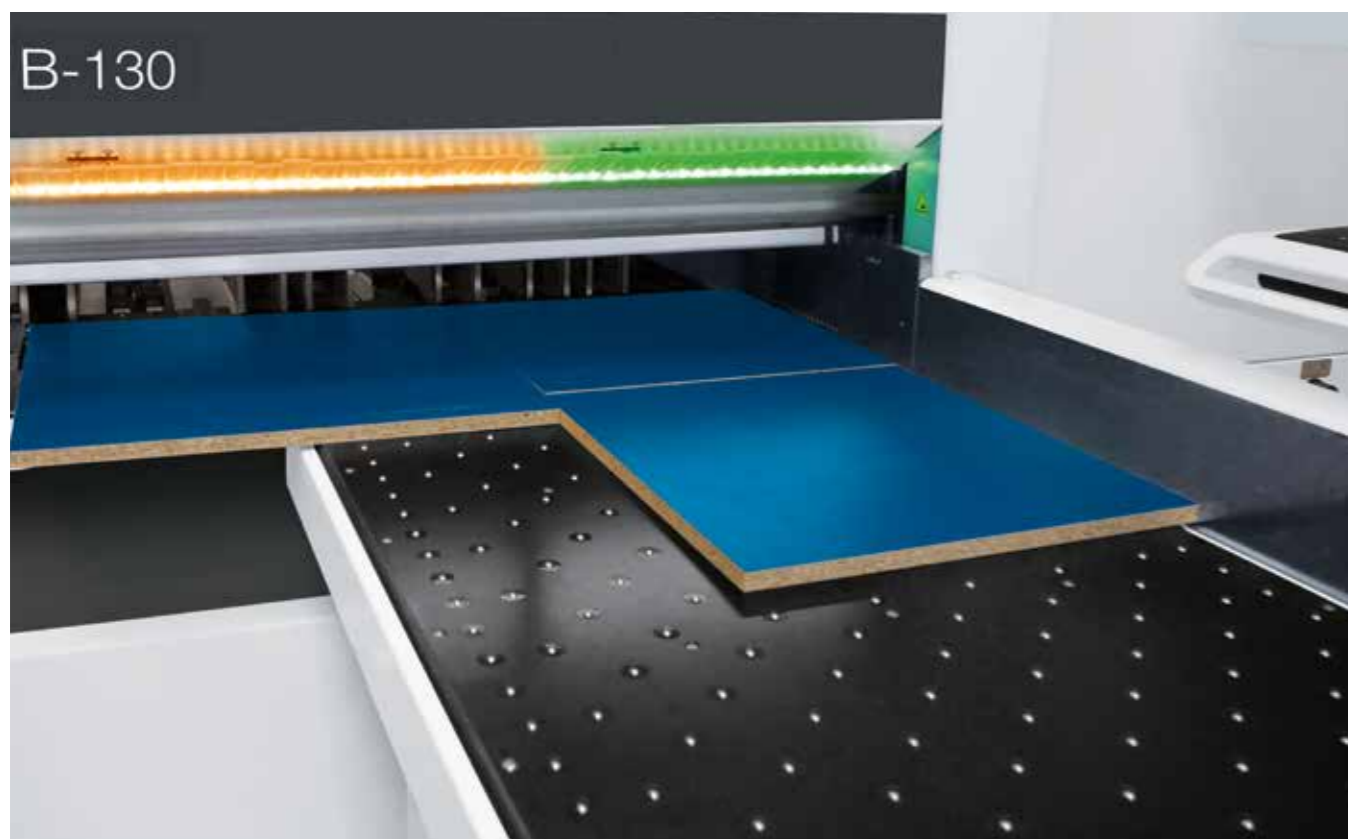


### **More intuitive**

Operating the machine is child's play. Many of the functions are similar to those of a smartphone or tablet and will therefore be familiar to you. Even beginners will feel immediately at ease and will soon be able to control the machine comfortably.

## Optional feature: innovative operator guidance with IntelliGuide Classic

The innovative operator assistance system IntelliGuide is now available for the SAWTEQ B-130. The Classic version features an LED strip at the cutting line which guides the operator by means of light signals.



### IntelliGuide Classic at a glance

- Colored LED signals at the cutting line allow intuitive operation and a quicker, safer way of working
- Using the colored LED elements, machine operators can immediately see if a part has been fully processed, needs to be cut again or can be disposed of as waste
- On the basis of the LEDs that light up, the operator can determine whether the workpiece on the table meets the required specifications

Would you like more information? Find out more in the “IntelliGuide” brochure.

### Benefits of the IntelliGuide Classic

- Fast and simple processes: operator and saw work in tandem and do not slow each other down
- Intuitive machine operation with colored LED signals: the operator hardly needs to look at the monitor, allowing the operator to concentrate on working on the cutting pattern
- Smooth, ergonomic and safe processes for efficient working
- Easy to change operator at any time

## Optional features: increasing productivity with the appropriate cutting optimization software

Production time, material yield, parts handling and logistical process: efficient panel cutting with seamless processes requires intelligently optimized cutting patterns. For HOMAG saws, you can get the appropriate optimization solution on demand – from large to small, as permanently installed software or directly from the tapio cloud. You have the choice because the SAWTEQ B-130 is, like all HOMAG saws, tapio-ready.



### intelliDivide – the easy way to first-class optimization results

Simply upload the parts list. Done! The result? A choice of several alternatives for cutting patterns and entire runs. That's how easy IntelliDivide makes it.

In detail: the cloud-based optimization software IntelliDivide utilizes significantly higher computing capacities than are available for locally installed optimization software and can therefore swiftly provide the user with several alternative optimization results.

This means that with IntelliDivide the operator can choose from a variety of options, including results based purely on reducing waste, on the shortest machine time or on the simplest handling, perfectly adapted to the relevant requirements.

Applications are varied and are geared toward both the trade and industry.



### Cut Rite cutting optimization software

Efficiency through planning: this short phrase sums up the key benefits of the Cut Rite software. With this world-leading software solution, you can optimize waste and systematically lower the overall costs for cutting.

#### Highlights

- Seamless, precise and highly efficient processes ensure optimized project control
- Efficient cutting processes which can be individually adapted to your production processes by means of parameter settings
- Full cost control within the cutting process: material costs and processing time are calculated automatically when the quotation is prepared
- Faster calculations by using all the processors in the PC
- Simple handling: clearly structured, easy to operate and graphics display the information

Find out more in the “Cut Rite” brochure.

## Small but powerful — the SAWTEQ B-130

Compact size, sturdy design and equipped with proven HOMAG technologies. In short: the SAWTEQ B-130 is a panel dividing saw that ideally meets the requirements of ambitious craft businesses.



### The highlights

- Cutting length 3200 mm or 3800 mm
- 65 mm saw blade projection
- HOMAG CADmatic 5 control software
- Including protective guard



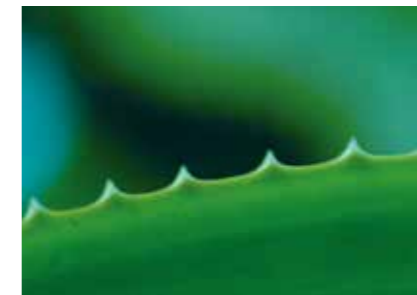


**Standard features**

The motto of the SAWTEQ B-130 is "buy, connect, and experience precision." As standard, HOMAG equips the panel dividing saw with everything you need for high-precision cutting of single panels and small series. This saves you having to evaluate various technical solutions and you can start using your new HOMAG machine straight away. It doesn't get easier than this.

## ecoPlus – because efficiency starts with the use of resources

Energy, time, material and personnel are all precious resources. Conserving them increases productivity and saves costs. The ecoPlus technologies from HOMAG help you to achieve this aim, providing countless innovations that save energy and reduce your operating costs. What's more, ecoPlus reduces CO<sub>2</sub> emissions and protects the environment. A worthwhile investment twice over.



### ecoPlus technologies for maximum energy savings

- The standby button, a standard feature, puts the saw in an energy-saving standby mode at the touch of a button
- SAWTEQ B-130 with IE3 motors
- Variable speed control by means of a modern bypass circuit for all models with frequency-controlled main saw motor
- The geometry of the saw carriage enables highly efficient dust extraction
- All models are equipped with an energy monitor to monitor consumption
- Less energy required thanks to optimized dust extraction
- Thin-kerf saw blades can be used on request, ensuring less waste among other benefits
- Many innovations for improved ergonomics and smooth production processes

## High performance is the result of numerous high-tech solutions

Speed, quality and precision during the cutting process can only be achieved if panel materials are moved quickly, gently and with a high level of accuracy. On the SAWTEQ B-130, this is ensured by numerous technologies in the standard features that smoothly interact with one another — from the program fence and pressure beam to the clamps and patented side pressure device.



### HOMAG patent: central side pressure device

- Integrated directly into the saw carriage. This reduces the cycle times by up to 25% in comparison with conventional systems
- The contact pressure is infinitely variable – ideal for thin panels, laminates or sensitive materials

### Saw carriage

The saw carriage is a robust steel construction with a main and a scoring saw as well as a central side pressure device.

- Maintenance-friendly: one motor for the main and scoring saw
- Innovative system for raising and lowering the main and scoring saw blades
- Infinitely variable saw feed speed
- Highly precise and quiet
- Saw carriage speed up to 60 m/min
- Fast saw blade change thanks to Power-Loc

### Power-Loc

This easy-to-use, fast clamping system speeds up blade changes on both main and scoring saw.



### Program fence for precision and dimensional accuracy

The compact, electronically controlled program fence with clamps and accurate guiding system has an electromagnetic measuring system that guarantees positioning accuracy of +/- 0.2 mm per meter. Even minimal trims and dust cuts are possible. The measuring system is entirely wear- and maintenance-free.

### Rugged pressure beam for first-class cut quality

The large-area pressure zone directly at the cutting line reduces vibrations to a minimum. The result is precise cuts, for books too.



### Clamps: perfection down to the last detail

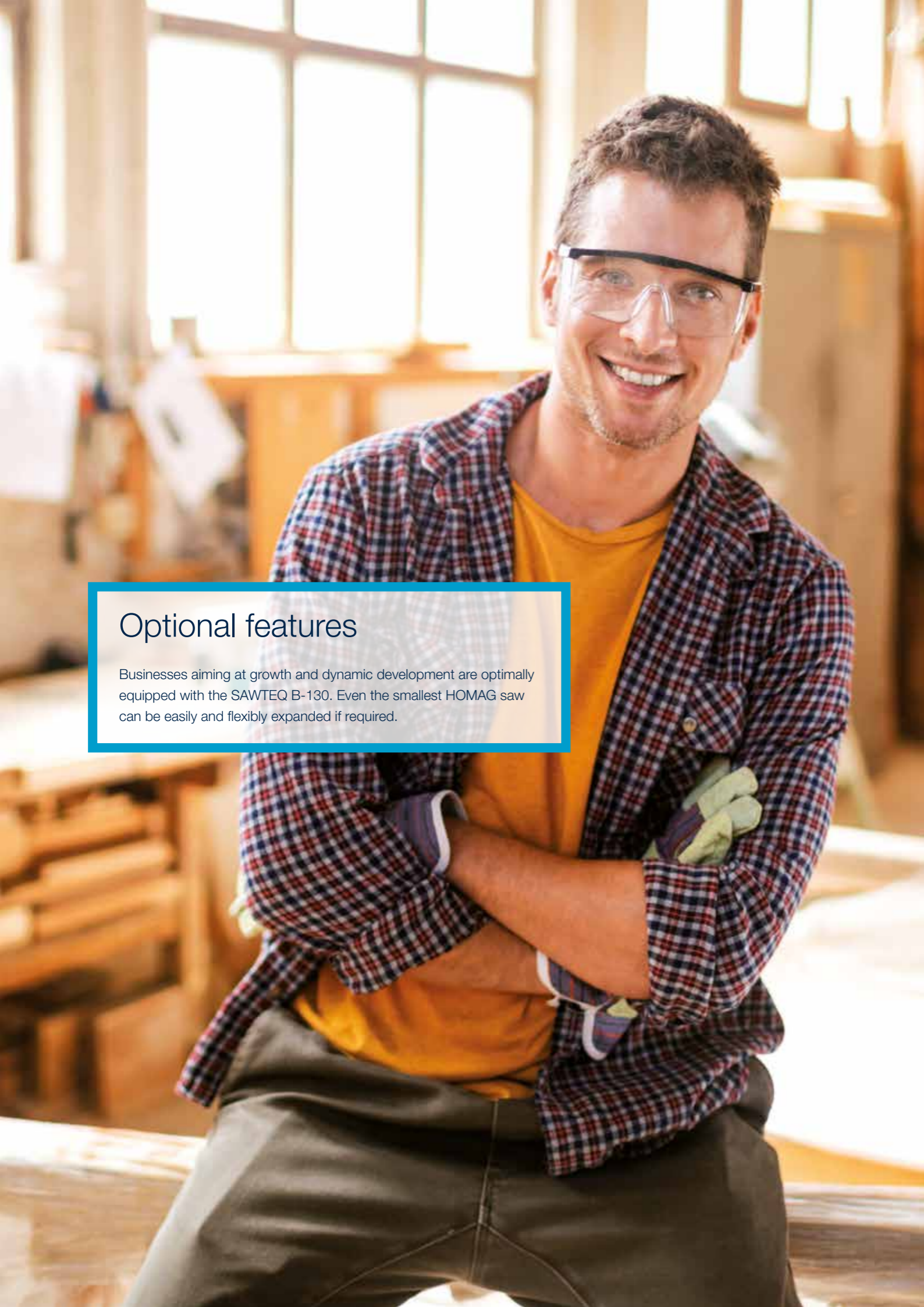
The robust clamps position the material gently and precisely at the cutting line.



### Additional start/stop key

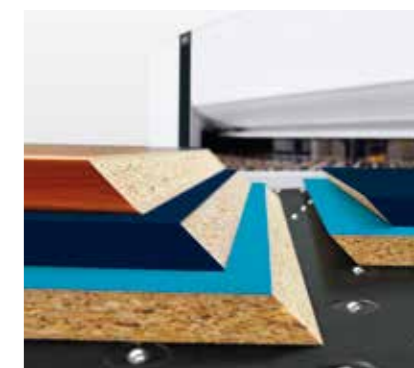
A very practical and ergonomic solution – in particular when cutting long strips or large panels that make access to the control panel difficult.





## module45 – giving your saw the scope to produce bevel cuts

With module45, you can now produce all cuts, including bevels, on one and the same saw. Work efficiently and flexibly without changing station, at infinitely variable angles ranging from 0 to 46 degrees.



### Optional features

Businesses aiming at growth and dynamic development are optimally equipped with the SAWTEQ B-130. Even the smallest HOMAG saw can be easily and flexibly expanded if required.

#### The technology

- module45 consists of a stationary saw carriage with a tilting saw blade that can be adjusted infinitely variably to angles of 0 to 46 degrees
- When viewed from the front, the unit is integrated into the air cushion table on the far left
- The table plate can be opened, allowing easy access to the saw carriage for changing saw blades
- Other features include dedicated systems for contact pressure and dust extraction, plus a fold-down right-angled fence for maximum handling flexibility at the front of the saw

#### Incorporate bevels into cutting patterns

Now you can also incorporate bevel cuts into your cutting patterns: either using the Cut Rite optimization software when preparing work in the office, or when inputting the patterns directly in CADmatic. Parts to be processed with module45 are then cut (oversize) and the operator only needs to set the angle of the bevel on module45 and start the cut.

#### The benefits of module45

- You no longer need a sliding table saw for bevel cuts
- Higher energy efficiency as two machines have been combined into one
- Easy one-man operation
- Less waste and higher quality thanks to less transport damage as the material remains on the one machine
- Greater ergonomic and safety benefits than a circular saw
- Retrofit possible at any time on request

[MORE AT HOMAG.COM](https://www.homag.com)



module45

## Plenty of useful options

Regardless of whether you're looking for hardware or software, you can always get more because at HOMAG you have access to practical, needs-based add-on technologies.



### Gentle material handling

Additional rollers on the edge of the air cushion table ensure particularly gentle positioning of material and greater operator comfort.

### Air cushion tables

Instead of the standard 500 mm air cushion table width, a width of 650 mm or 800 mm is also available.

### Additional clamps

For a better grip. So that your saw can securely clamp even big, thin or smooth panels.

### More power for the main saw

The SAWTEQ B-130 can optionally be fitted with a more powerful main saw motor – 7.5 kW power or 9.2 kW instead of 5.5 kW.



### Easy2Feed for saws with a cutting length of 3800 mm

Easy2Feed promises automatic feeding at a budget price. This optional feature saves time and space, is very ergonomic and can be retrofitted. The core element is a compact scissor lift table, which can be comfortably loaded by forklift truck.

- Panels upward of 9.5 mm thickness can be fed
- Maximum panel size: 3100 x 2200 mm
- Stack height 460 mm
- Lifting table in pit on request
- For material that can be push-fed
- Feed roller conveyor on the side available as an option



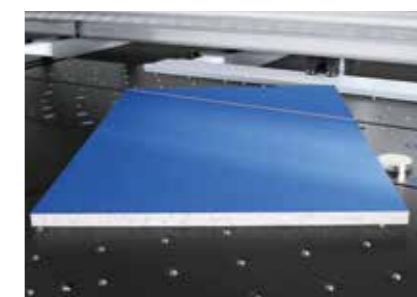
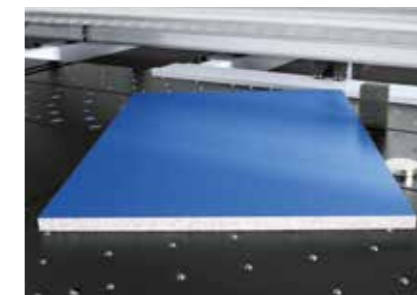
### Stress elimination cut

Stresses in the material are released when the material is cut and can influence the quality of dimensions and cuts. The HOMAG stress elimination cut option can solve this problem. Systematic preliminary cuts can be defined during optimization and release the tension in the material.



### Cutting and grooving

Kerfing on the panel dividing saw saves time.



### Manual angle cut

The angle cut device allows you to control angle cuts using the CADmatic control software.

## MORE AT HOMAG.COM



Trim stops

### Manual trim stops

With these, your saw can also master material with overhanging laminates or veneers. The trim stops are integrated into the clamps and are simply flipped forward when required.

- Gentle handling of sensitive materials with overhanging covering layers
- Precise positioning

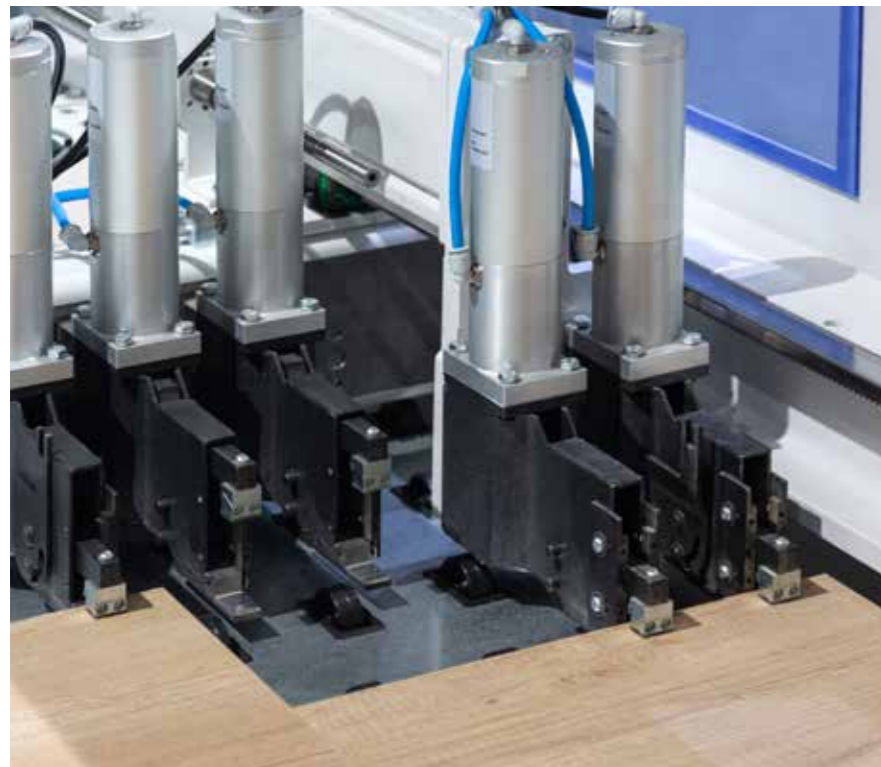


### Label printer for superb results

The label printer from HOMAG allows you to print customized labels directly at the saw and design them to include bar codes, text and graphics if required. If you also use our Cut Rite optimization software, the material goes directly to the next process step with printed instructions. In this way, you can integrate the saw perfectly into your production flow.

# Power Concept Classic – for even more performance and material throughput

The innovative Power Concept is now available for the SAWTEQ B-130. At the heart of this technology is a clamp that can be moved separately. Using this clamp, two strips with different cross cuts can be cut to length together.



**Our recommendation: Power Concept Classic in combination with IntelliGuide Classic**

The innovative assistance system supports the machine operator with the help of LED light signals at the cutting line in the safe, simple and fast processing of the increased material throughput.

## POWER CONCEPT CLASSIC

Up to **30%** more output

 Lower costs per cut

 Significantly improved material flow

 High material throughput to easily handle peaks in production

### Power Concept Classic

- An additional clamp operates independently on the program fence and moves in front of the program fence if necessary
- An algorithm adapted to the Power Concept Classic sorts the strips directly at the saw. This is based on existing optimization data for the shortest machining times
- Good to know: if you choose Power Concept Classic, you will automatically receive the first air cushion table in a wider version. In addition, the saw is equipped with another start-stop key on the second air cushion table.

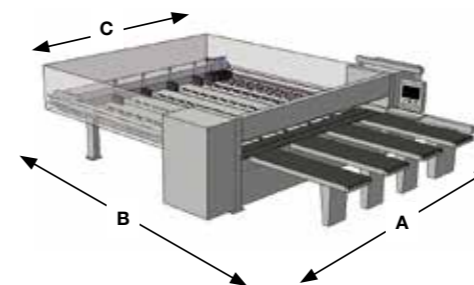
**Power Concept Classic can be retrofitted at any time and easily for machines manufactured in July 2021.**

TECHNICAL DATA*	
Model	SAWTEQ B-130
Saw blade projection (mm)	65
Cutting length (mm)	3200/3800
Program fence speed (m/min)	Up to 60**
Saw carriage speed (m/min)	Up to 60
Main saw motor (kW)	5.5 (optional: 7.5/9.2)
Main saw blade (mm)	310 x 4.4 x 60
Scoring saw blade (mm)	150 x 4.45–5.25 x 45
Operating software	CADmatic 5
Monitor	21" full-HD multi-touch display
Total air requirement (l/min)	150
Required compressed air supply (bar)	6
Extraction system (m³/h, m/sec)	2600, approx. 26

\* Values relate to the standard version

\*\* Forwards 25 m/min

\*\*\* Dim. A: incl. 64 mm for extraction connection, dim. C: standard program fence width



MACHINE DIMENSIONS***			
SAWTEQ B-130	A (mm)	B (mm)	C (mm)
B-130/32/32	4945	6038	3582
B-130/38/38	5505	6638	4142

# HC LIFE CYCLE SERVICES

Optimal service and individual consultations are included in the purchase of our machines. We support you with service innovations and products which are especially tailored to your requirements. With short response times and fast

customer solutions we guarantee consistently high availability and economic production – over the entire life cycle of your machine.



## REMOTE SERVICE

- Hotline support via remote diagnosis by our trained experts regarding control, mechanics and process technology. Thus, more than 92% less on-site service required and consequently a faster solution for you!
- The ServiceBoard App helps to solve tasks in a fast, simple and concrete way. This is achieved by mobile live video diagnosis, automatic sending of service requests or the online spare parts catalog eParts.



## SPARE PARTS SERVICE

- High spare parts availability and fast delivery.
- Ensuring quality by predefined spare parts and wear parts kits, comprising original spare parts.
- Identify and inquire for spare parts online under [www.eParts.de](http://www.eParts.de) 24/7, or buy even faster and more comfortably in the new HOMAG eShop ([shop.homag.com](http://shop.homag.com)).



## MODERNIZATION

- Keep your machinery up to date and increase your productivity as well as your product quality. This is how you can meet tomorrow's requirements today!
- We support you with upgrades, modernization as well as individual consultancy and developments.



## DIGITAL SERVICES

- serviceRemote – the new remote service solution of the future! Fast restart of production because the remote service employee has extensive access to relevant physical data.
- serviceAssist – provides help for self-help. The preventive solutions proposed in the new App are the combination of our experiences and existing machine data.



## SOFTWARE

- Telephone support and consultancy through software support.
- Digitalization of your spare parts via 3D scanning saves time and money compared to new programming.
- Subsequent networking of your machinery with intelligent software solutions ranging from construction to production.



## FIELD SERVICE

- Increased machine availability and product quality by certified service staff.
- Regular checks through maintenance/inspection guarantee the highest quality of your products.
- We offer you the highest availability of technicians in order to reduce downtimes in case of unpredictable troubles.



## TRAINING

- Thanks to training perfectly suited to your requirements, your machine operators can optimally operate and maintain the HOMAG machines.
- The training also includes customer-specific training documents with exercises proven in practice.
- Online training and webinars. Learn without traveling, meet your trainer in the digital classroom.

For you more than...

**1,350**  
service employees worldwide

**92%**  
less on-site service thanks to  
successful remote diagnosis

**5,000**  
customers in trainings / year

**150,000**  
machines, all electronically documented  
in 28 different languages – in eParts

## **HOMAG Group AG**

info@homag.com  
www.homag.com



## **YOUR SOLUTION**