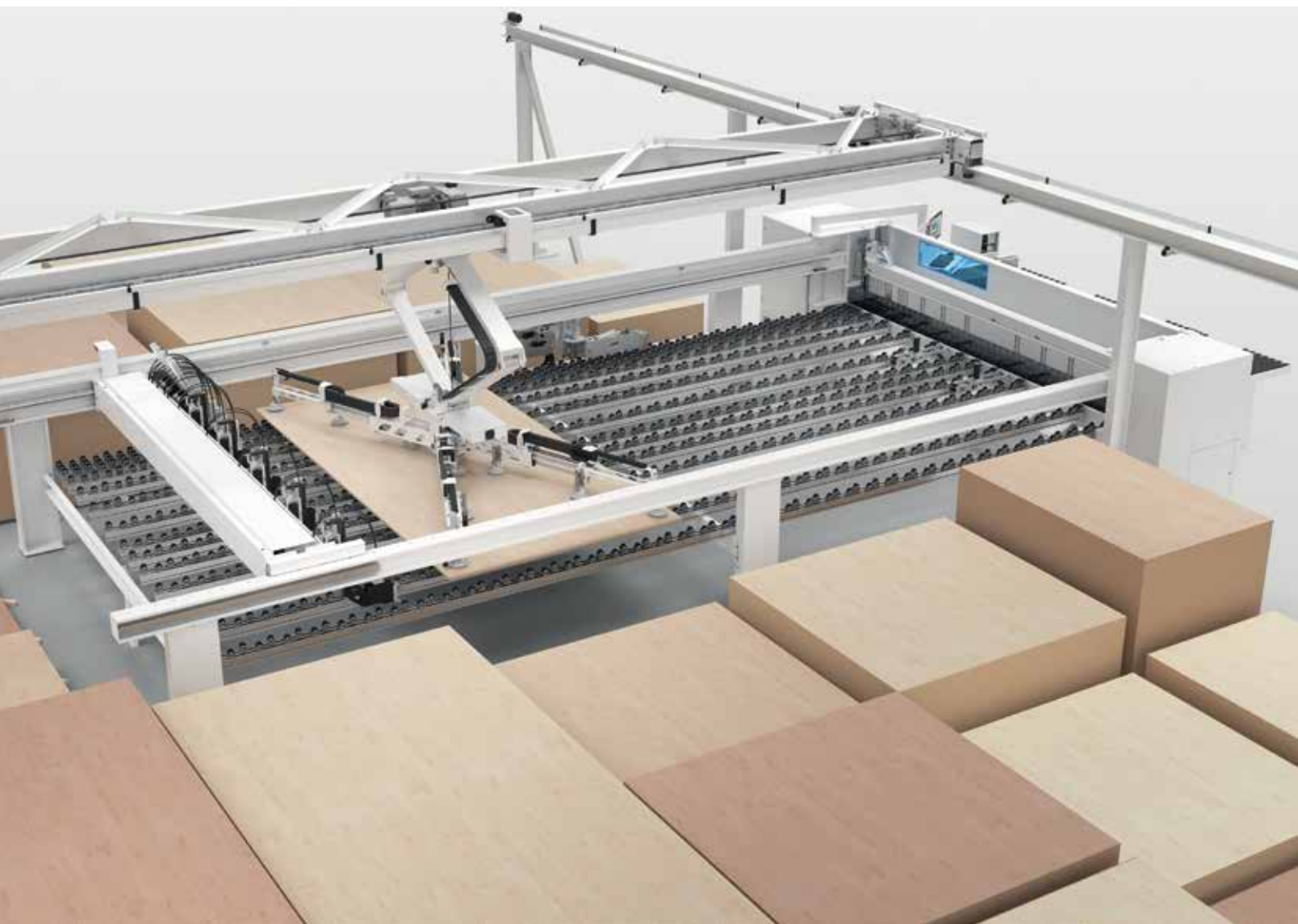


Optimized, transparent material flow.

HOMAG

Horizontal storage system
STORETEQ S-200, S-500, S-700

YOUR SOLUTION





More potential for operating machines

From craftsman who uses a storage in the size of a double garage, up to industrially producing furniture manufacturer who operates a horizontal storage with maximum dimensions - storage systems solve the logistical requirements at the beginning of the process chain.

YOUR SOLUTION

[MORE: HOMAG.COM](https://www.homag.com)



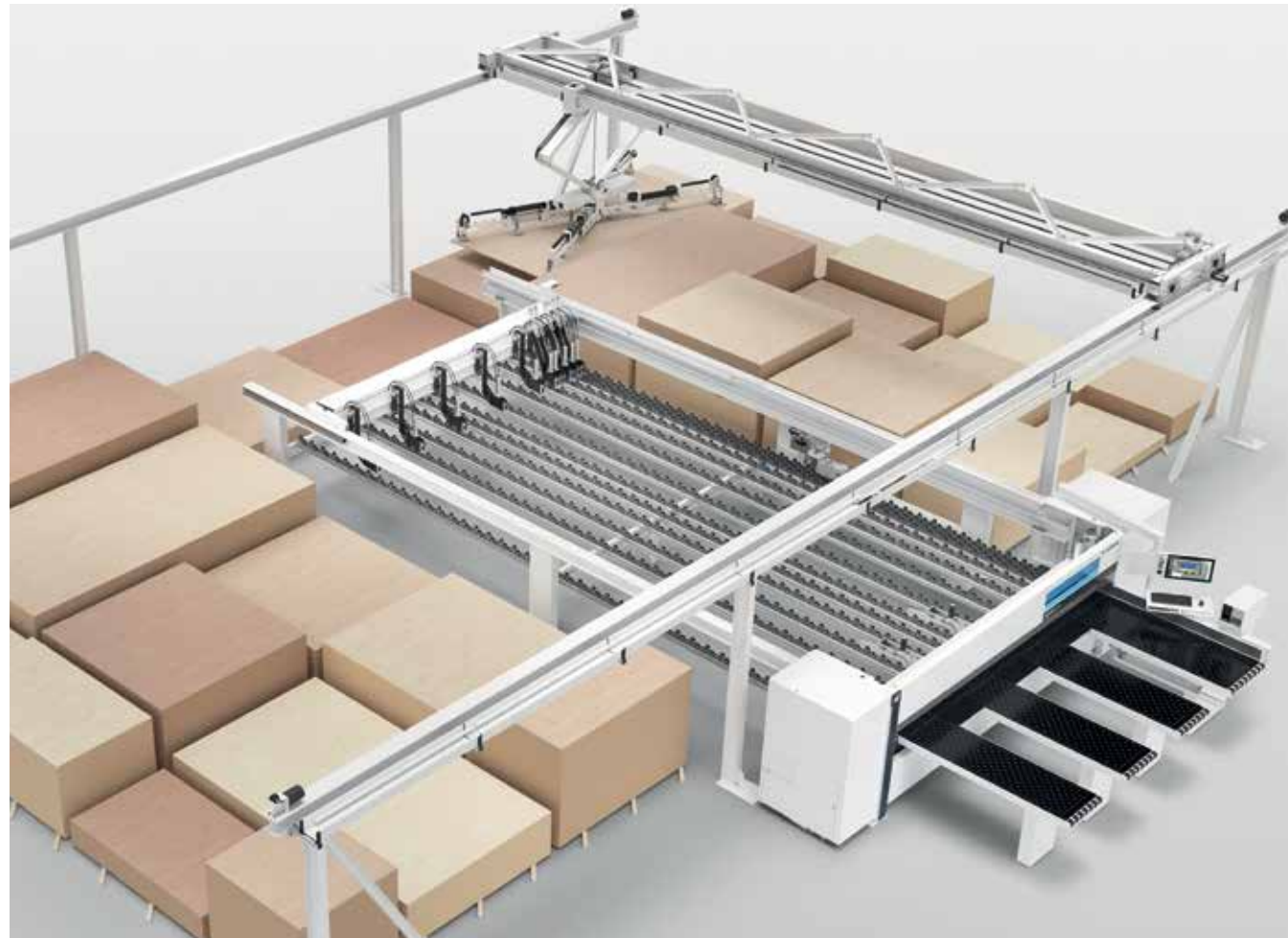
STORETEQ

CONTENT

- 04 STORETEQ S-200
- 06 STORETEQ S-500
- 08 STORETEQ S-700
- 12 woodStore
- 14 Solutions
- 18 Technical data

STORETEQ S-200 - Logistics with appreciable optimization effects

Whether a panel spectrum as large as possible, high speed, or full equipment. Transportation routes are optimized, material and time are measurably saved by using the STORETEQ S-200. The STORETEQ is intelligent logistics with noticeable optimization effects.



Handling with profit - STORETEQ S-200 is profitable even in smallest space

The STORETEQ S-200 optimizes the storage area and saves you valuable production space.

- Fast amortization - the combination with a saw already pays off with 20 panels to be cut per day.
- Intelligent stand by - The machines only consumes energy, when it is moving
- Optimal material use up to offcut parts thanks to wellthought-out material management

Advantages for production - transparency and safety around the operating machine

Standard interfaces interlink the STORETEQ S-200 with other machines to an effective operating center.

- Handling without extra costs - Coated panels from 8 mm thickness even in the standard due to suction traverse ST61.
- High flexibility because of ideal use of the available space even in smallest rooms.
- Productivity increase up to 40% with constant number of personnel

„An important competition advantage arises through time savings thanks to the automatic horizontal storage. The facts search times, quality and speed have become noticeably more effective. Here, in particular, the characteristics material overview, offcut management, and structured procedures have paid off in many cases.“

Mario Beck - Owner of the carpentry, Mario Beck



MORE: HOMAG.COM



STORETEQ



STORETEQ S-500 - more potential for operating machines

A lot of leeway in combining operating machines and in panel variety make the STORETEQ S-500 the icon within the storage systems. This storage system offers high efficient logistics for industry and handicraft.

„No human is as conscientious, persistent, and fast as our storage system. The investment works. Operation runs smoothly and more calculable, also on quick shots. We save two employees, who we need more urgent in other places. Furthermore, the storage system detects slow sellers and submits utilization proposals.“

Josef Eibl - Owner, Josef Eibl GmbH



STORETEQ S-500 - Flexibility is a trump - There is something for every demand

The STORETEQ S-500 stable design permits large flexibility of the extension in length and width.

- Span width up to 16 m, and travel length up to 50 m and more
- Standard interfaces for integration of different operating machines
- Controlled, low vibration travel movements also in the max. extension



Horizontal storage system STORETEQ S-500 - High material variety with one storage system

Whether plastic, plexiglass, or laminates, coated or uncoated panels - the STORETEQ S-500 is a multi-talent even in panel handling.

- Panel weight up to 350 kg and panel length up to 5,600 mm
- Failure-free transport also on structured surfaces
- High stability of double scissors for exact panel handling
- Handling of plastic panels

MORE: HOMAG.COM



STORETEQ

STORETEQ S-700 - Logistics for really big wishes

The storage for the high end sector even fulfills the really big wishes. Additionally to the multiple varieties in connecting operating machines, the special design of the STORETEQ S-700 permits span width beyond 16 m.

„For us the production line is a huge step ahead and a good investment in the future. Compared to earlier, today we have an overview on the material stock by pressing a button. Handling times have considerably reduced and the machine's utilization ratio has increased. It's a fun to operate the machine.“

Frank Witte, Dirk Witte - Managing Partners, Georg Meyer Tischfabrik GmbH + Co. KG



More collocation, more overview, more safety! Storage places or storage areas can be prioritized for mixed, chaotic or one sort operation.



Variable in connection of operating machines from A to Z

Whatever machines shall be connected, the interface compatibility of the STORETEQ permits interlinking of multiple operating machines.

- Capacity increase of each machine linked to the storage.
- Effective production flow due to intelligent pre-removal
- Control of production sequence from every terminal connected to the storage



A lot of space for different kinds of material

The STORETEQ S-700 offers the largest extent among the HOMAG storage systems with span width beyond 16 meters.

- Precise handling by means of laser controlled positioning of each panel.
- Panels are best possibly stored to the next processing step
- The available material is optimized due to constant feedback of stock to be planned.



MORE: HOMAG.COM



STORETEQ



More time for important things

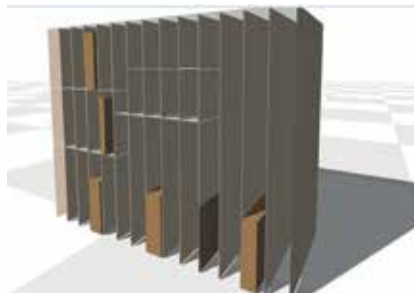
Do you have to deal with close delivery times for the delivery of your high quality products? Does the process planning "run outside" to look what material is on stock? Or do your customers change the order on short notice despite close deadlines? The consequences then are far-ranging! Delivery times are difficult to keep, operating procedures are getting untrue, and countless overtime hours are reflected in production costs and employee's motivation.

If this sounds familiar to you, it is time for a HOMAG STORETEQ! You have free choice. Whether combined with an operating machine or as pure collating storage. You can only benefit! Starting with the STORETEQ S-200, with less than one year pay-back time, that fits in a double garage, over the STORETEQ S-500 that covers almost every demand, up to the STORETEQ S-700 for the really big wish. The success is measurable at once! Production capacity is increased, personnel and quality costs are reduced, and your order procedure will be more flexible, faster and more economic.

The best: **Our storage systems save time for your important objects.**



Mobile Command
Different functions can be controlled via mobile devices in the machine's wireless LAN.



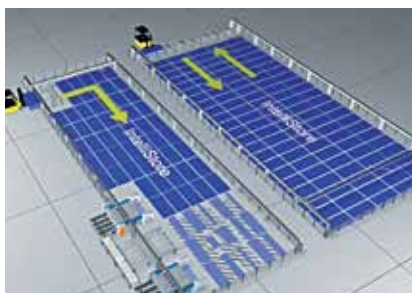
Offcut management
Automatic storing of offcuts out of the saw with integrated measuring of the panels when intake. Management of manual offcut storages with corresponding assistants for an easy adjustment.



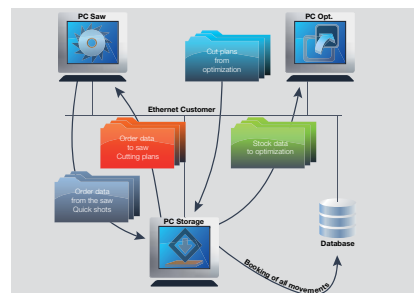
Email Alert
In case of malfunctions in the storage process the system will send an e-mail to a defined e-mail account.

THE MOST IMPORTANT REASONS FOR HOMAG

1. **Open data base system** enables smooth integration
2. **Multiterminal** offers transparency, ergonomic operation
3. **Smart Connected System:** Complete integration of optimization, saw and storage to a cut system with appropriated interfaces
4. **IntelliStore:** Flexible storage organisation, adapting itself automatically on production conditions
5. **Complete offcut management** prevents the buildup of offcut stock
6. **Forklift driver management:** Enables from cut decoupled material supply
7. **Administration of external storages** integrated
8. **Easy Edit production lists:** Simple change of the orders and sequence
9. **Different storage strategies** enable simple adjustment for the storage management on changing production scenarios
10. **Optimization of the production sequence** enables high capacity



intelliStore
All storage movements are constantly monitored and automatically adjusted to the current production conditions.

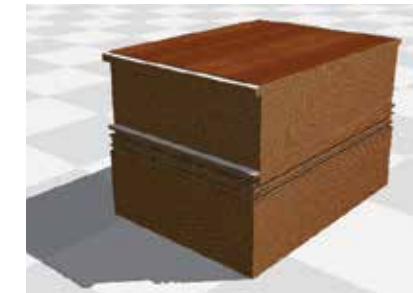


Smart Connected System
Complete integration of optimization, saw, and storage into one cutting-to-size system with standard interfaces that match.

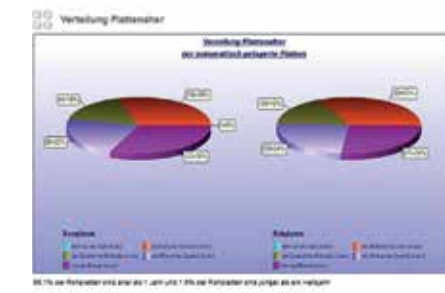
woodStore 7 the software makes the difference

With woodStore, HOMAG provides its storage systems with an intelligent control. It is the brain of each storage system and optimizes all processes in the storage. woodStore links the purchase system to the order processing, manages

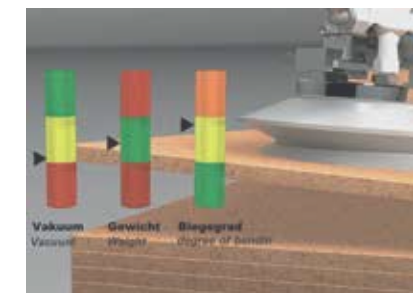
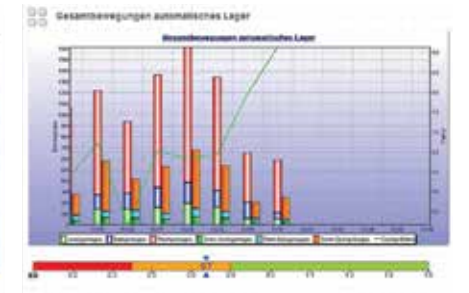
offcuts, and optimizes material movements. With its modules, the storage control calculates a storage organization that best fits customer's demands.



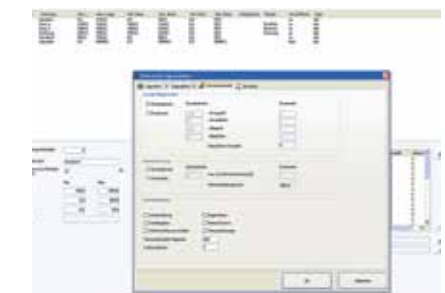
Integrated Decor Selection
An easy choice and allocation of panel decors for a realistic display of the panels that are available in the storage.



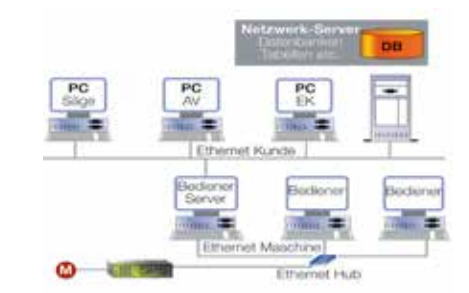
woodStore Analyzer
In an individually selectable period the main functions of the storage system are scrutinized customer-specific and analyzed whether the customer uses the storage system optimally.



Self-learning Panel Separation
Fully automatic panel separation, where only two settings are necessary for panel handling.



User Management
A storage operation that is controlled by persons, with a functional scope of up to 40 different user rights.



Data Base - Access Analysis
Customer data base is measured and recorded for performance to identify digital bottlenecks.

MORE: HOMAG.COM

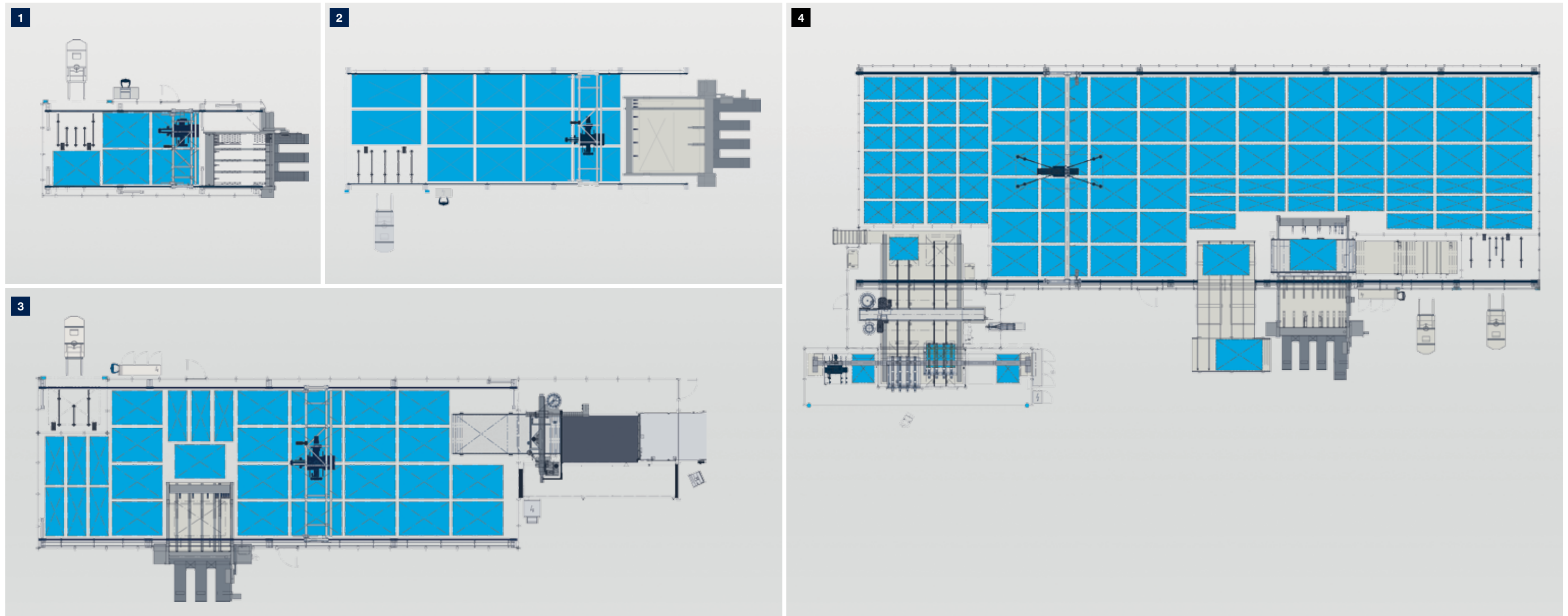


STORETEQ

Intelligent logistics is a key to success

HOMAG horizontal storage systems are intelligent multi talents where no wish remains open. From the smallest storage that „fits in a double garage“ up to a multi story

storage for industrial demands. The material flow is optimized in all production sizes, stocks are managed transparently and operating machines are used optimally.



1 Storage and saw with 5 stacking places
User, e.g. traditional carpentry

2 Storage and saw with 14 stacking places
User, e.g. equipment supplier

3 Storage with saw and CNC processing with more than 20 stacking places
User, e.g. fair trade and shop fitting, supplier companies

4 Storage with saw and processing with more than 30 stacking places
User, e.g. industrially oriented kitchen and furniture manufacturers

MORE: HOMAG.COM



STORETEQ



HOMAG LifeCycleService

The sale of our machines comes with all-in optimum service backup and individual advice. We support you with service innovations and products which are especially tailored to your requirements.

With short response times and fast customer solutions we guarantee consistently high availability and economical production – over the entire life cycle of your machine.



HOMAG Finance – precisely the right financing

- We offer you tailored financing proposals for your machinery or plants. Our financial advice goes hand in hand with our expertise relating to technical questions. Your personal contact person will take care of the whole process.
- The benefit for you: The ability to invest without delay in new technologies and remain financially flexible.

1.200

Service employees around the world

650

processed spare parts orders / day

85,2%

less on-site-services through successful remote diagnosis.

>150.000

machines, all electronically documented in 28 different languages – in eParts.



Remote Service

- Hotline support via remote diagnosis regarding control, mechanics and process technology. Thus the on-site service can be reduced by 85.2 %!
- Mobile applications such as ServiceBoard reduce the costs through fast help in case of troubles by mobile live video diagnosis, online service message and the online spare parts shop eParts



Spare Part Service

- Identify, request and order spare parts around the clock via www.eParts.de
- Local availability of parts offered by our sales and service companies as well as sales and service partners all over the world
- Reduction of downtimes through defined spare parts and wear parts kits



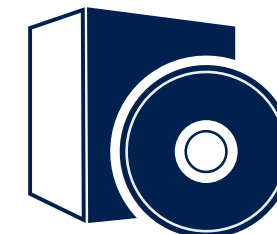
Modernization

- Keep your machinery up-to-date and increase your productivity as well as your product quality. This is how you can meet tomorrow's requirements today!
- We support you with upgrades, modernization as well as individual consultancy and developments



Trainings

- The trainings perfectly suit to your requirements. Through this your machine operators can operate and maintain the HOMAG Group machines optimally.
- The trainings also include customer-specific training documents with practice-proven exercises



Software

- Telephone support and consultancy through software support
- Digitalization of your spare parts via 3D scanning saves time and money compared to new programming
- Subsequent networking of your machinery with intelligent software solutions ranging from construction to production



Field Service

- Increased machine availability and product quality by certified service staff
- Regular checks through maintenance / inspection guarantee the highest quality of your products
- We offer you the highest availability of technicians in order to reduce downtimes in case of unpredictable troubles

HORIZONTAL STORAGE SYSTEM STORETEQ S-200		
	Basic machine	With additional equipment
Span width (mm)	5,000	12,000
Frame length (mm)	10,000	50,000
Speed		
Bridge (m/min.)	60	Max. 25% increase in performance by increasing accelerations and speeds
Carriage (m/min.)	80	
Lifting drive (m/min.)	30	
Workpiece length (mm)	2,000 – 4,200	max. 5,600
Workpiece width (mm)	800– 2,200	min. 400
Workpiece thickness raw boards (mm)	from 12	from 3
Workpiece coated (mm)	from 8	from 3
Panel weight (kg)	250	250
Stack height (mm)	2,100	2,500

HORIZONTAL STORAGE SYSTEM STORETEQ S-500		
	Basic machine	With additional equipment
Span width (mm)	5,000	16,000
Frame length (mm)	10,000	50,000
Speed		
Bridge (m/min.)	60	Max. 35% increase in performance by increasing accelerations and speeds
Carriage (m/min.)	80	
Lifting drive (m/min.)	30	
Workpiece length (mm)	2,000 – 4,200	max. 5,600
Workpiece width (mm)	800– 2,200	min. 400
Workpiece thickness raw boards (mm)	from 12	from 3
Panel weight (kg)	250	350
Stack height (mm)	2,100	2,500

HORIZONTAL STORAGE SYSTEM STORETEQ S-700		
	Basic machine	With additional equipment
Span width (mm)	5,000	21,000
Frame length (mm)	10,000	50,000
Speed		
Bridge (m/min.)	120	120
Carriage (m/min.)	120	120
Lifting drive (m/min.)	60	60
Workpiece length (mm)	2,000 – 4,200	max. 5,600
Workpiece width (mm)	800– 2,200	min. 400
Workpiece thickness raw boards (mm)	from 12	from 3
Panel weight (kg)	250	350
Stack height (mm)	2,100	2,500

woodStore - Software modules for STORETEQ	STORETEQ S-200	STORETEQ S-500	STORETEQ S-700
Data base system SQL	x	x	x
Multi terminal surface	x	x	x
Smart Connected System	x	x	x
Offcut management	*	*	*
External storage management	x	x	x
Stacker operators management	x	x	x
Flexible storage organization	x	x	x
Optimization module IntelliStore	x	x	x
FlexSortPlus - pre-sorting	x	x	x
woodStore Analyzer	x	x	x
Extended storage function	x	x	x
Storage strategies	x	x	x
High-performance intermediate buffering	x	x	x
Rainbow Pattern	x	x	x
Import and export of stack information	x	x	x
Panel reservation	x	x	x
Integrated Decor Selection	x	x	x
Support of multi position optimization	x	x	x
Linking of stationary machines	*	*	*
Lifting table management	*	*	*
Head cut modul	*	*	*
ERP/PPS Integration	*	*	*
Stabilization function for thin panels	x	x	x
Data base access analysis	x	x	x
Email Alert	*	*	*
Intelligent vacuum control	x	x	x
Smart Separation Learning	x	x	x
Master data management	x	x	x
Master data overview	x	x	x
Easy2Work package	x	x	x
Production list module	x	x	x
Backup System	x	x	x
Report generator, import and export interfaces	x	x	x
User management	x	x	x
Mobile Command	x	x	x
Cloud Ready	x	x	x

*Additional equipment is required for the full functionality of the application.

HOMAG Group AG

info@homag.com

www.homag.com



YOUR SOLUTION