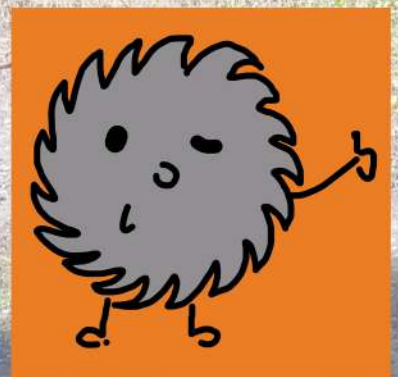


## PWR 421 , PWR 321







## Ripsaws modification PWR 421

**PWR 421 - ripsaw basic modification**

**PWR 421 4R - ripsaw with four driven rollers in pressure box**

**PWR 421 PP - ripsaw with movable sawsleeves**

**PWR 421 V - feeding belt is replaced by the rollers**

		PWR 421	PWR 421 4R	PWR 421 PP	PWR 421 V	PWR 321
max. width of cut	mm	400	400	400	400	300
height of cut max./min.	mm	160/12	160/12	150/12	160/18	140/12
minimal length of workpiece - individually		750	750	750	750	750
with pressure plate	mm	650	650	650	-	650
with auxiliary pressure roller *		500	500	500	-	500
sawblades diameters	mm	250-450	250-450	250-450	250-450	250-400
sawblade hole diameter	mm	80	80	80	80	80
max.width of workpiece	mm	870	870	870	870	770
saw shaft rotations	ot/min	3300 3800 4450 5500	3300 3800 4450 5500	3300 3800 4450 5500	3300 3800 4450 5500	3800 4450 5500
feeding speed	m/min	4/40	4/40	4/40	4/40 (4/60)	4/40
output of main el.motor	kW	45,55,75,90	45,55,75,90	45,55,75	45,55,75,90	45,55,75
motor of feed belt	kW	3	3	3	3	3
height of table	mm	850	850	850	850	850
dust extraction socket diameter	mm	300	300	300	300	300
dust extraction speed	m/s	min.30	min.30	min.30	min.30	min.30
machine dimensions	mm	2720x1885x1980	2720x1885x1980	2720x1885x1980	2720x1885x1980	2654x1806x1890
weight	kg	3620-3800	3710-3890	3660-3860	3610-3790	3050

\* pressure roller limits the cutting height



## Comparison of cut quality

Frame saw



band saw



ripsaw



saw space



drive



central lubrication



driven feeding roller



feeding belt



control panel



switchboard box



The upper pressure mechanism consists of three driven rollers and one non-driven.

In the vicinity of the saw, the material is held by the pressing edges.

Cutting safety ensures non-return catchers (anti-kickback fingers)

- a) tableware
- b) against kick-back
- c) against flying off chips

the machine completely meets the safety standard ČSN EN 1870-4



## special accessories

pressure plate



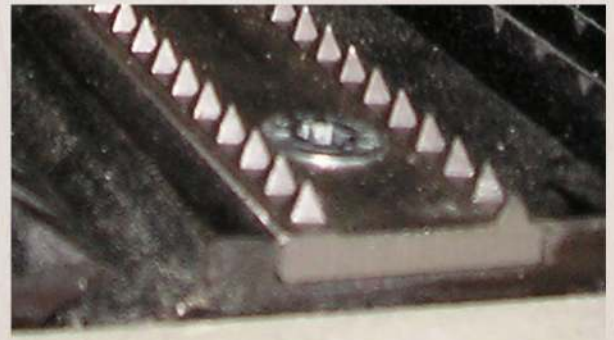
needle feeding belt



auxiliary pressure roller



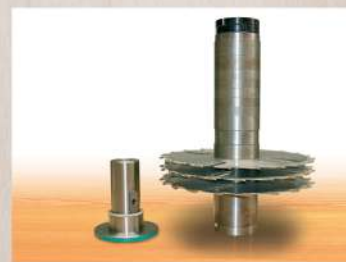
detail of needle feeding belt



guiding lasers



assembly jig



saw sleeve



spacer rings



## special modification – machine with movable saw sleeves

ramp for lasers



saw blade space



movement of saw sleeves



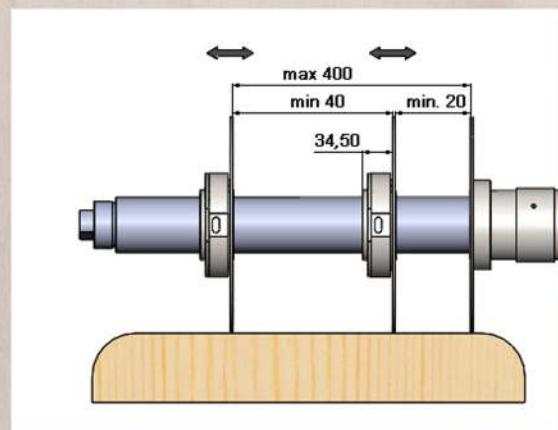
control panel



control pedals



diagram of movable sawsleeves





## special modification – auxiliary drawing roller



The machine is complemented by a powered driven upper pressure roller.  
This solution facilitates the insertion of lumber.  
The total number of top driven rollers increases to 4 units

## special modification – feeding rollers bed



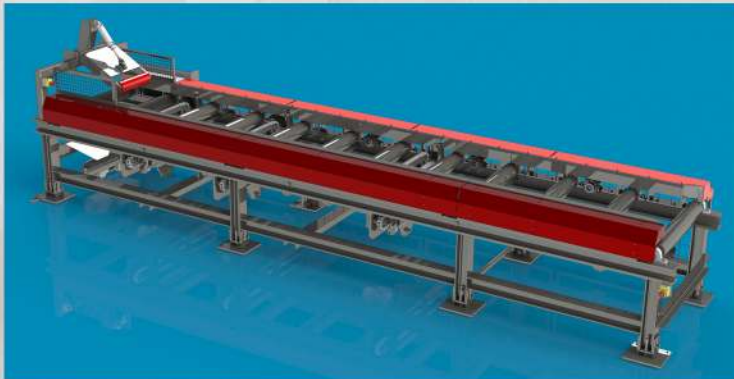
The feed belt is replaced by seven rollers.  
The machine is designed for the heaviest operations.



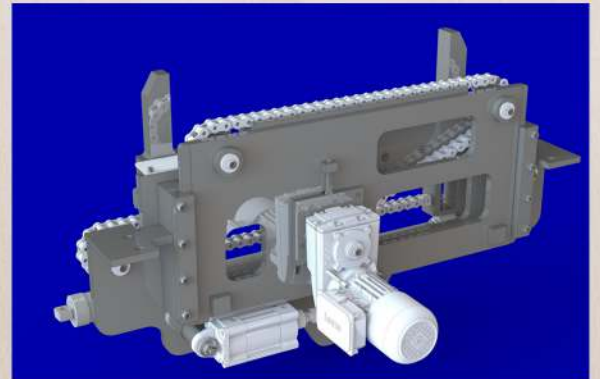
## integration of ripsaws PWR 421 to ripsaw nodes



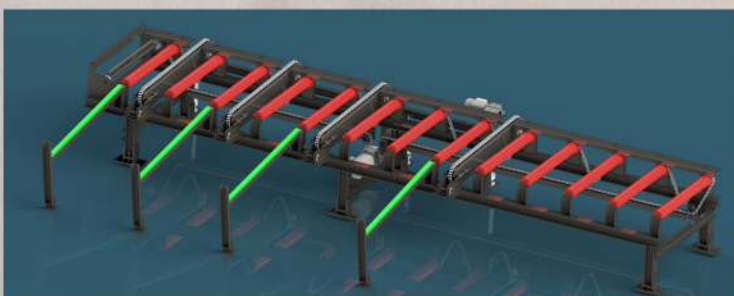
Input centering conveyor DWS 3



aggregate of centering conveyor DWS 3



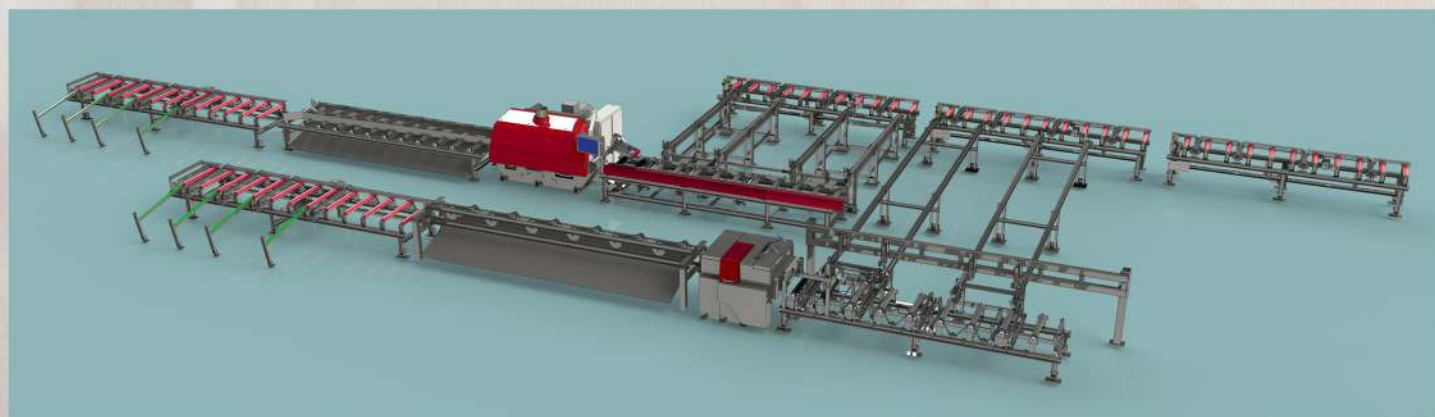
output conveyor DWS 20



The DWS 3 centering conveyor guarantees precise insertion of the material into the ripsaw. Incorporating into the ripsaw node increases productivity, reduces the number of workers in the production process. It significantly reduces physical work and reduces the risk of injury.



## integration of ripsaws PWR 421 to ripsaw nodes



**TOS Svitavy, a.s.**

Říční 2269/1D

CZ- 568 02 Svitavy

tel. 461 563 111

e-mail: [tos@tos.cz](mailto:tos@tos.cz)

GPS: Loc: 49°45'39.25"N,16°28'14.53"E

[www.tossvitavy.com](http://www.tossvitavy.com)

