



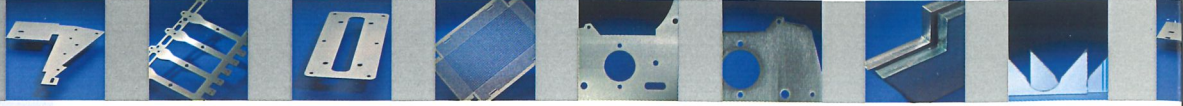
WEBER

Schleifen - Entgraten - Verrunden - Entzundern - Bürsten

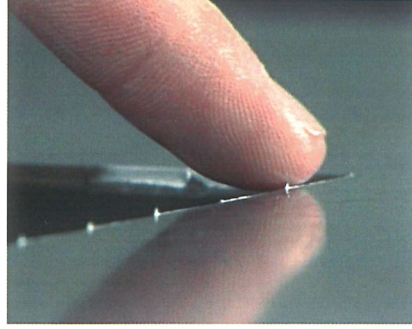


WEBER

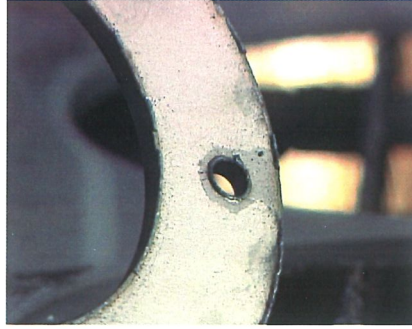
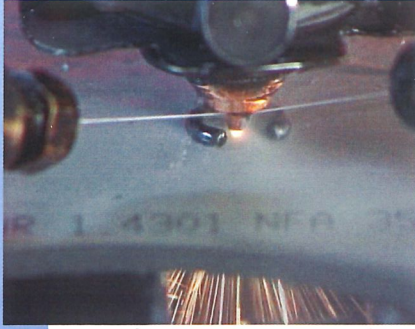
WEBER



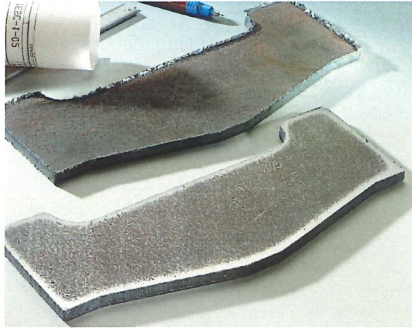
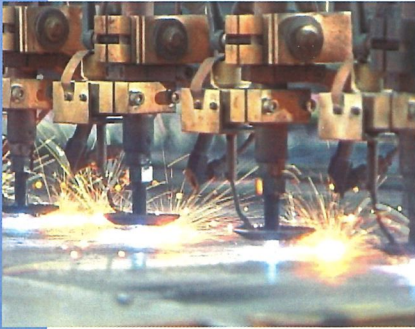
**Stanzen/
Nibbeln**



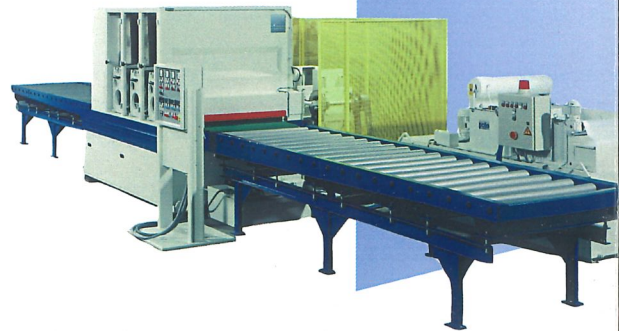
**Laser-
schneiden**

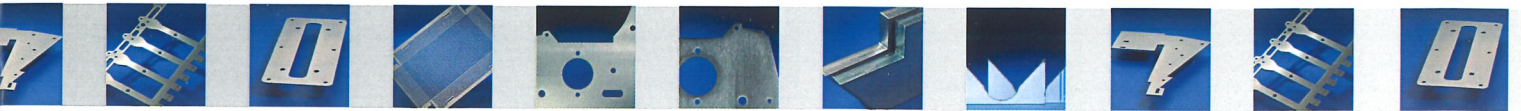


**Autogen-/
Plasmaschneiden**

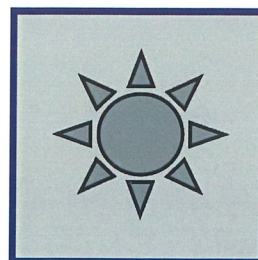
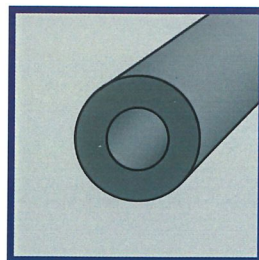
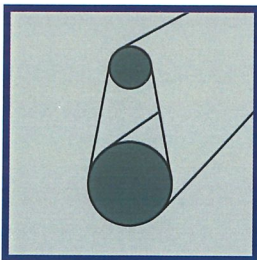
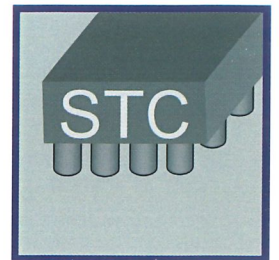
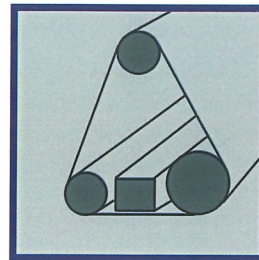
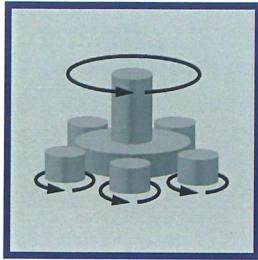


**Schleifen/
Bürsten**





WEBER DR - WEBER MD - WEBER STC



**Überzeugen Sie sich von unseren
Lösungen im WEBER-Vorführzentrum**



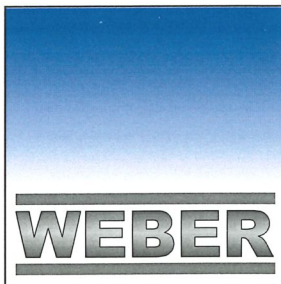
WEBER



WEBER

bietet Ihnen die Lösung für
Ihre spezielle Aufgabestellung

Hans Weber Corp.
PO Box 3387
Olathe, KS 66063-3387
Tel. 1-913-254-1611
Toll Free 877-519-9795
Fax 1-913-254-1582
Email: info@weberamerica.com
www.weberamerica.com



Hans Weber
Maschinenfabrik GmbH
Bamberger Str. 19 – 21
D-96317 Kronach
Telefon +49 (0) 92 61 409-0
Fax +49 (0) 92 61 409-199
email: info@hansweber.de
www.hansweber.de