

## PRODUCT RANGE

ALUCOBOND® / ALUCOBOND® plus		Thickness: 3/4 mm (6 mm on request)				
Width [mm]	1000	1250	1500	1575	1750	
Length [mm]	2000 – 6800	2000 – 6800	2000 – 6800	2000 – 6800	2000 – 6800	
Solid Colours	●	●	●	●	○	
Metallic Colours	●	●	●	●	○	
Spectra & Sparkling Colours	●	●	●	○	--	
NaturAL	--	●	○	--	--	
Wood Design	--	●	●	--	--	
Anodized Look	●	●	●	○	--	
ALUCOBOND® design	○	●	●	--	--	
Anodized*	●	●	○	--	--	
Mill Finish	●	●	●	--	--	

ALUCOBOND® A2		Thickness: 3/4 mm (6 mm on request)				
Width [mm]	1000	1250	1500	1575	1650	
Length [mm]	2000 – 6800	2000 – 6800	2000 – 6800	2000 – 6800	2000 – 6800	
Solid Colours	--	●	●	--	○	
Metallic Colours	--	●	●	--	○	
Spectra & Sparkling Colours	--	●	●	--	--	
NaturAL	--	○	○	--	--	
Wood Design	--	●	●	--	--	
Anodized Look	--	●	●	--	--	
Mill Finish	--	●	●	--	--	

○ on request \* Anodized according to DIN 17611. All anodized ALUCOBOND® composite panels have contact lines (about 25mm width) on their short sides. For panel lengths of more than 3500mm, the composite panels have contact lines (about 20 mm width) on their long sides. On the back, there are contact lines of about 35 mm on the short and the long sides of the panels. Maximum panel length 6500mm. Please take this into consideration when dimensioning the panels.

**DIMENSIONAL TOLERANCES**  
Due to manufacturing, a displacement of the cover sheets sidewise at the panel edges up to 2mm is possible.  
Thickness: ± 0,2mm (mill-finish | stove lacquered | anodized)  
Width: - 0 / + 4 mm  
Lengths: 1000 – 4000mm; - 0 / + 6 mm  
Lengths: 4001 – 8000mm; - 0 / + 10mm

**DIMENSIONS**  
Standard dimensions are 4 x 1250 x 3200mm. Other dimensions are available on request. We are pleased to provide advice for the choice of available surfaces and panel dimensions.

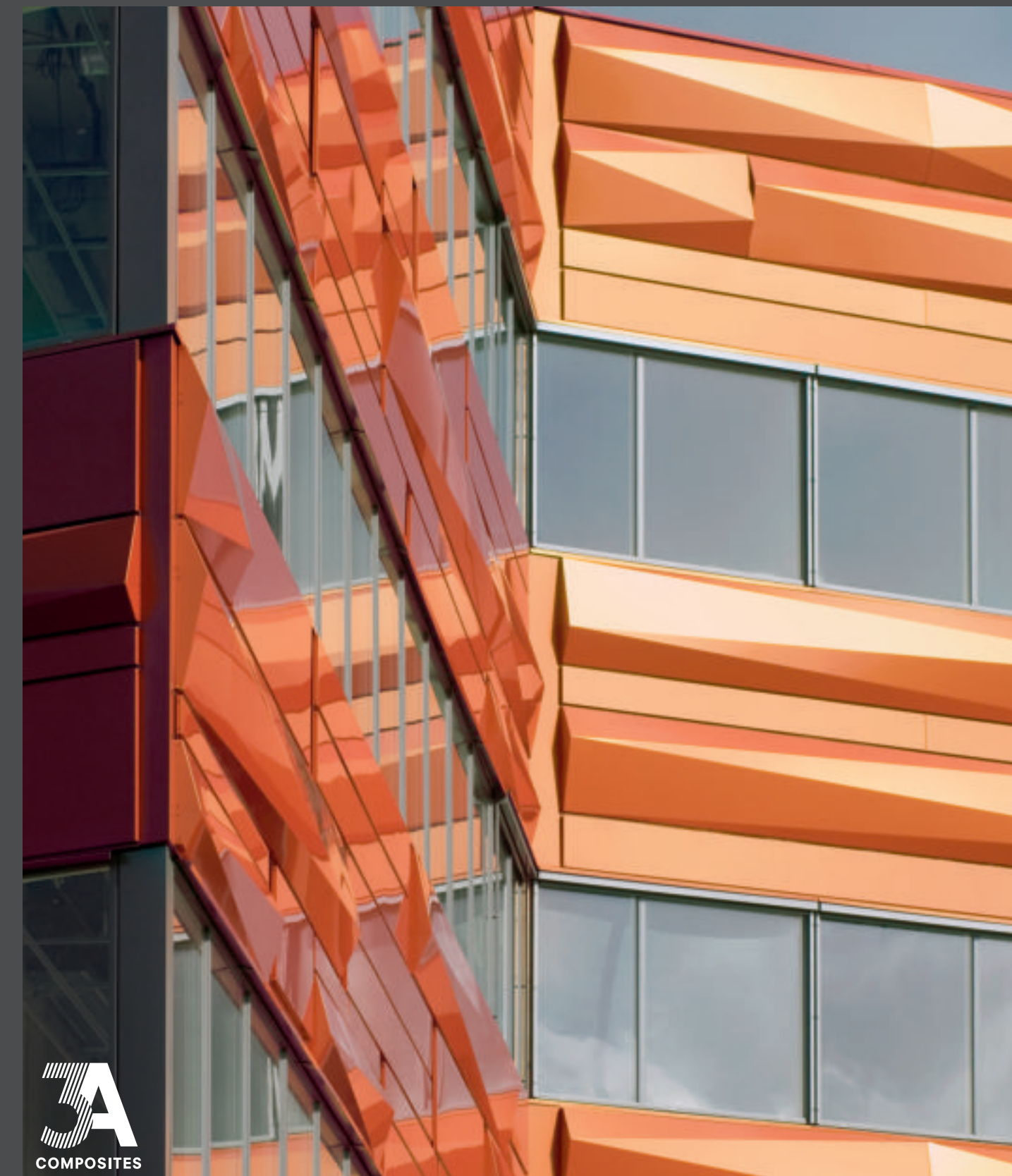
**COLOURS AND SURFACES**  
More colours and surfaces are available upon request.

Create the difference.  
ALUCOBOND®

# ALUCOBOND®

## AT A GLANCE

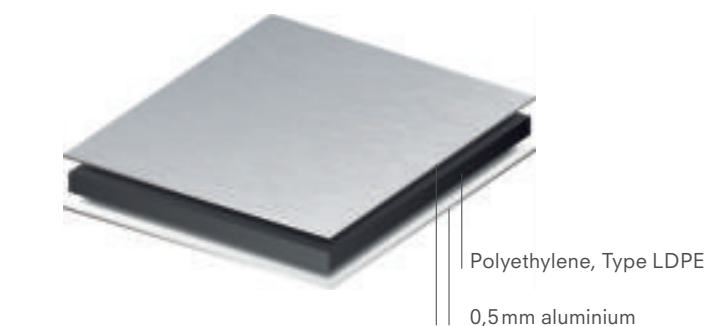
All you need to know about the original aluminium composite material



## THE PRODUCT

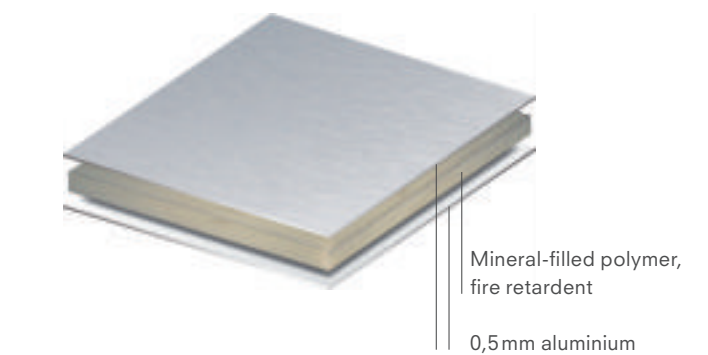
### ALUCOBOND®

ALUCOBOND® is a rigid, yet flexible façade material for architectural uses. ALUCOBOND® is extremely weatherproof, impact-resistant and break-proof, vibration-damping, and ensures easy and fast installation. ALUCOBOND® is produced with various core thicknesses in a continuous lamination process and then customized regarding dimensions.



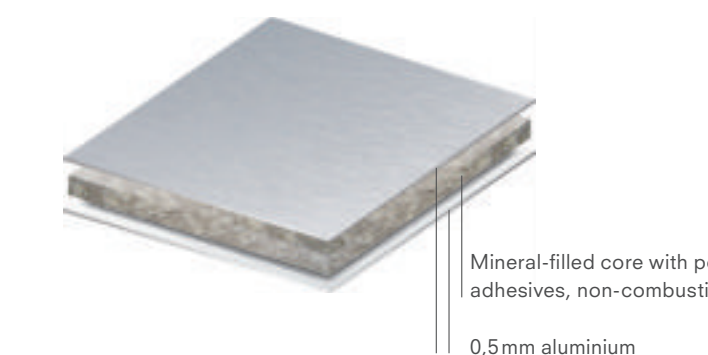
### ALUCOBOND® plus

ALUCOBOND® plus has been developed exclusively for the more stringent requirements of the fire prevention regulations in architectural products. Thanks to its mineral-filled, core ALUCOBOND® plus meets the stricter requirements of the fire classifications. It is hardly inflammable and offers all the proven product properties of the ALUCOBOND® family, such as flatness, formability, resistance to weather and easy processing.



### ALUCOBOND® A2

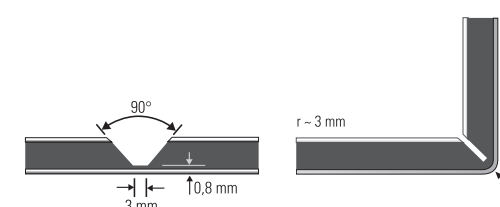
ALUCOBOND® A2 is the only non-combustible aluminium composite panel used in architecture that fulfills the respective standards worldwide. Thanks to its mineral-filled core, ALUCOBOND® A2 meets the strict requirements of the fire regulations and enhances the possibilities for the concept and design of buildings. ALUCOBOND® A2, just like all the products of the ALUCOBOND® family, allows simple processing, is impact-resistant, break-proof and weatherproof and, above all, non-combustible.



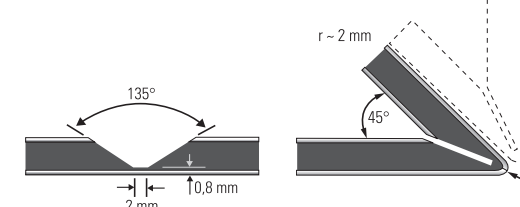
## ROUTING & FOLDING

Thanks to this very simple processing method ALUCOBOND® composite panels can be folded manually, following exactly the line of the routed groove. To do so grooves are routed on the reverse side of the ALUCOBOND® panel. The shape of the groove determines the bending radius. The routing can be

done using a vertical panel saw equipped with ALUCOBOND® grooving accessories, a CNC machining centre, a portable sheet milling machine or a hand router. The routing and folding method can be used for ALUCOBOND® composite panels with all available standard surface finishes.



90° V-groove for folds up to 90°



135° V-groove for folds up to 135°

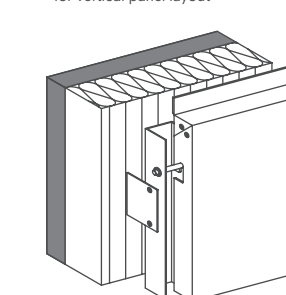
**3A Composites GmbH**  
Alusingenplatz 1  
78224 Singen, Germany  
Tel +49 7731 - 80 2060  
Tel +49 7731 - 80 2347  
info.eu@alucobond.com  
www.alucobond.com

08/2012 Printed in Germany ATA GLANCE English

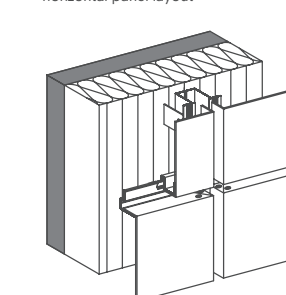
**3A**  
COMPOSITES

## EXAMPLES OF FIXING METHODS

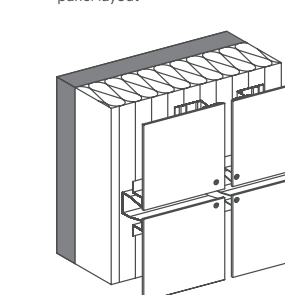
TRAY PANELS  
suspended on stainless steel bolts  
for vertical panel layout



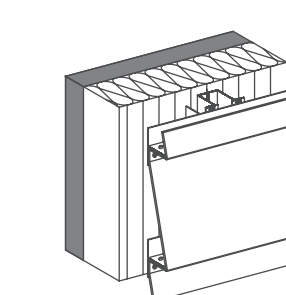
TRAY PANELS SZ 20  
tongue and groove design /  
horizontal panel layout



RIVETED / SCREWED  
on omega carrier section for vertical  
panel layout



RIVETED WEATHER BOARDING  
on aluminium substructure



ALUCOBOND® composite panels can also be used with wooden substructure. Canopies and soffits can be realized with ALUCOBOND® as well. For more technical information, please contact our technical service.

## FIRE CLASSIFICATION

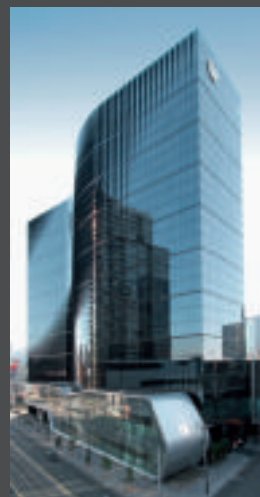
	ALUCOBOND®		ALUCOBOND® plus		ALUCOBOND® A2	
Country	Test accord. to ...	Classification	Test accord. to ...	Classification	Test accord. to ...	Classification
EU	EN 13501-1	Class D	EN 13501-1	Class B, s1, d0	EN 13501-1	Class A2, s1, d0
Germany	DIN 4102-1 DIN 4102-7	Class B2 passed	EN 1187 (method 1)/ DIN 4102-7	passed	EN 1187 (method 1)/ DIN 4102-7	
France	NFP 92-501 NFP 16-101	Class M1 Class F0	NFP 92-501	Class M1	NFP 92-501	Class M0, non combustible
Italy	UNI 9177	Class 1				
Great Britain England/ Wales / Scotland	BS 476-6/7 BS 476-6/7	Class 0 Class 0	BS 476-6/7 BS 476-6/7	Class 0 Class 0	BS 6853	meets requirements of LUL limited combustible non combustible
Scandinavia					DS 1085-1	Class A
Switzerland	VKF	Class 4.2	VKF	Class 5.3	VKF	Class 6q.3
Russia	GOST 30244-94 GOST 30402-95 GOST 12.1.044-89 GOST 12.1.044-89	G4 (combustibility) W1 (flammability) D2 (smoke emission) T2 (smoke flammability)	GOST 30244-94 GOST 30402-95 GOST 12.1.044-89 GOST 12.1.044-89	G1 (combustibility) W1 (flammability) D2 (smoke emission) T1 (smoke flammability)	GOST 30244-94 GOST 30402-95 GOST 12.1.044-89 GOST 12.1.044-89 GOST 31251-03	G1 (combustibility) W1 (flammability) D1 (smoke emission) T1 (smoke flammability) k0
Australia	AS ISO 9705 AS 1530.3 Indices	Group 3 material SMOGRA 3.194 m2/s2 0 (ignitibility) 0 (flame spread) 0 (heat evolved) 0-1 (smoke developed)	AS ISO 9705 AS 1530.3 Indices	Group 1 material SMOGRA 1.385 m2/s2 0 (ignitibility) 0 (flame spread) 0 (heat evolved) 0-1 (smoke developed)	AS ISO 9705 AS 1530.3 Indices	Group 1 material SMOGRA 0.630 m2/s2 0 (ignitibility) 0 (flame spread) 0 (heat evolved) 0-1 (smoke developed) A2, s1, d0
USA	EN 13501.1 ASTM-E 84	D meets requirements	EN 13501.1 ASTM-E 84 NFPA 285	B, s1, d0 meets requirements passed	EN 13501.1	

## INNOVATIVE BY TRADITION

CROWN METROPOL, AUSTRALIA – BATES SMART



The Crown Metropol hotel podium entry in ALUCOBOND® naturAL.



View on the whole hotel complex.

Distinctive, vibrant and unmistakably modern are features of the 28-level Crown Metropol hotel with its unique wave-like shape and the sleek podium entry.

Bates Smart intended the hotel's design to challenge tradition and add a sense of occasion with unorthodox elements, dark, dramatic shapes and earthy, grounded silhouettes inspired by nature. The sinuous 'S' form of Crown Metropol's hotel tower and its activated podium creates a striking and highly memorable gateway into Melbourne. Inspired by liquid mercury, the tower's soft lines are enhanced by a shimmering reflective skin. The thin blades or 'fins' on the façade appear and disappear as you move around the building, enhancing the reflections of daylight. The sensual, fluid form of the building seamlessly flows through to the refined interiors of the hotel. The result is a refined, world-class hotel that showcases Melbourne from a new, contemporary angle and enables the city to be watched in silent motion.

## INDIVIDUAL DESIGN FREEDOM

LYSHOLT PARKEN, DENMARK – C. F. MØLLER



Advice House in ALUCOBOND® spectra' cupral as a landmark in the Vejle business park, Denmark. Text and pictures: C. F. Møller Architects, Photograph: Julian Weyer

C. F. Møller Architects have developed two office buildings, Advice House and Lysholt Tower. Both projects employ a simple, yet visually strong cladding with an unusual, colour-changing appearance.

The cladding-strips of "Advice House" are composed of a 'random' sequence of a total of 13 differently proportioned cladding panels, some of which are folded diagonally to create a triangulated pattern. The cladding panels are made of ALUCOBOND® spectra' cupral that offers changing colour effects with highlights and interesting colour gradients, depending on the viewing angle and the angle of the sun.

## USEFUL INFORMATION



Solid & Metallic Colours

Spectra & Sparkling Colours

naturAL

Wood Design

Anodized Look

### SURFACES

ALUCOBOND® surfaces are coated using exclusively high-quality and eco-friendly lacquer systems. They are highly weather resistant and resistant to industrial emissions. These properties are achieved using UV-resistant bonding agents. For standard finishes, fluoropolymeric top coats (e.g. PVDF) are used. All surface coats are applied in a continuous coil-coating process, i.e. with a continuous coating and stove-lacquering procedure. The quality of the coating is tested according to standards established by E.C.C.A. (European Coil Coating Association).

### ENVIRONMENT, HEALTH AND SAFETY

For 3A Composites, effective, continuous environmental protection is a main priority. It is of utmost importance to preserve natural resources in order to ensure a livable tomorrow for future generations. It commits itself to continuous self-improvement programmes for environmental protection, many of which go above and beyond government regulations. It is also in this area that 3A Composites strives to be a leader in its field. We were one of the first companies to develop its own environmental management system, which is regularly audited by independent auditors. The successful certification according to EN ISO 14001 speaks for itself.

### INSTALLATION

To avoid possible reflection differences (for metallic, special effect, naturAL and spectra colours), it is recommended to install the panels in the same direction as marked on the protective peel-off-foil. Colour variations may occur between panels originating from different production batches. To ensure colour consistency, the total requirement for a project should be placed in one order. Make sure to remove the protective foil as soon as possible after installation as prolonged exposure to the elements could make the foil difficult to remove. When stacking the panels, nothing should be placed in between them, as this could produce marks on the panels. It is recommended to only stack pallets of identical size should, with a maximum of 6 pallets stacked on top of each other.

### RECYCLING

ALUCOBOND® can be fully recycled, i.e. both the core material and the aluminium cover sheets can be recycled and used for the production of new material.

### WARRANTY

ALUCOBOND® stands for high quality and longevity. Warranties according to the product specification and approved field of application can be obtained upon request.

### SUSTAINABILITY

The certification system of DGNB, the German Association for sustainable construction, sets international construction standards. This is mainly due to a group of initiators who has already been dealing with questions in the context of sustainable construction. 3A Composites is one of the founding members: www.dgnb.de The info leaflet about the DGNB certificate can be downloaded at www.alucobond.com.



## APPROVALS

Country	Approval	Name	Approval authority
Belgium	UBATc 99/2368	ALUCOBOND® Cassettes; Bardage rapporté	UBATc, Bruxelles
Czech Republic	c.216/C5a/2009/0148	ALUCOBOND®	PAVUS a.s., Praha
France	n° 2/09-1372	ALUCOBOND® Riveté	CSTB, Paris
France	n° 2/09-1371	ALUCOBOND® Cassettes	CSTB, Paris
Germany	Z-33.2-6	ALUCOBOND® Fassadensystem	DIBt, Berlin
Great Britain	No 05/4214	ALUCOBOND® Cladding System	British Board of Agrément (BBA), Garston
Hungary	A-884	ALUCOBOND®	
Poland	AT-15-4058	ALUCOBOND®	Institut Techniki Budowlanej, Warszawa
Russia	TC 3282-11	ALUCOBOND® Bekleidung	ФЛЦ, Moskau
Singapore	011937	Product listing scheme: class 2	PSB Singapore
Slovakia	SK04-ZSV-0629	ALUCOBOND®	TSVS, Bratislava
Spain	No 345	Sistema de revestimiento de fachadas ventiladas mediante bandejas procedentes de paneles ALUCOBOND®	Instituto Eduardo Torroja, Madrid
Spain	No 346	Sistema de revestimiento de fachadas ventiladas mediante placas remachadas procedentes de paneles ALUCOBOND®	Instituto Eduardo Torroja, Madrid



The external shell also infuses the interior of the building.



The ALUCOBOND® aluminium composite façade in gold metallic evokes associations with coins or with the bank's corporate identity.

RAIFFEISEN FINANCE CENTER, AUSTRIA – PICHLER & TRAUPMANN ARCHITEKTEN ZT GMBH

The design of the building responds playfully to the space allocation plan of the different floors, and develops an envelope enclosing all the activities of the bank in a continuous way.

To the east and the west the building is wrapped with an ALUCOBOND® façade that is perforated by narrow window openings which are arranged in a specially developed layout. This layout allows particular prospects outside, but also offers the staff an almost intimate work atmosphere. The windows at calculated positions provide protection against glare for those working at computers.

The material used for the building's external envelope is the starting point for the design and material selection in the interior. Like the façade, the window reveals and the fan coils are clad with ALUCOBOND®. The suspended ceilings on the upper floor are made in the same colour so that the building envelope is drawn into the interior.

The interior and exterior design illustrates this system's high degree of flexibility. Monotony and repetition are eliminated.

