



The Alpha-Brush *Perfection* line of brush sanders are top of the line! These patented brush sanding machines can be ordered in a wide variety of sizes and configurations. Due to the variety of specific designs the brush machines integrate perfectly into a wide variety of applications in the wood market, metal processing, plastics, composites and more. These heavy-duty machines are designed and built to be run 24/7 in the most demanding conditions. The *Perfection* line of sanders can be configured with in-line sanding rollers for a lineal finish, a variety of disc station(s) configurations for a non-directional

scratch or with both for the most adjustable and effective all-purpose brush machine on the market. Each machine is custom built to the customer's specific application and processes.

Got a specific application? Give us a call, let us work with you to get the *Perfect* machine for your needs!

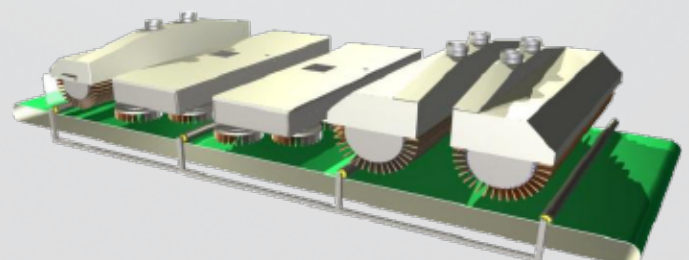
Perfection BB2DD

The BB2DD is the perfect machine for large production facilities that requires a fast feed speed for added sanding / scuffing or for the customer that needs the utmost in adjustability. The BB2DD is equipped with both rollers and discs and is configured with two large diameter - 400mm (16") rollers followed by two double disc-stations for a total of four rows of rotating and oscillating discs. The combination of discs and rollers give this machine the power to accomplish almost most any job. This sander can also be configured with discs first and drums last.

Conveyor/working width: 40" (1000mm) / 52" (1350mm) / 64" (1600mm) / 76" (1850mm)
Roller Diameter: 16" (400mm)
Disc Diameter: 10" (250mm)

Options:

7,5 KW (10 HP) Vacuum table
PLC control with memory effect
Cleaning brush with blowing device



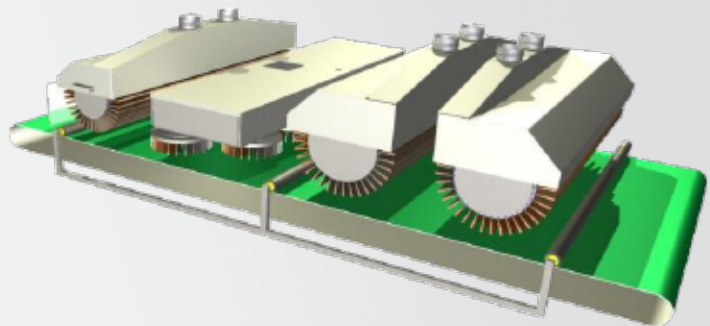
Perfection BBDD

The BBDD is considered the industry standard brush machine that is equipped with a combination of rollers (for lineal sanding/scuffing) and discs (for non-directional sanding / scuffing). The BBDD is ideally suited for the medium to large production facilities and is very adjustable for applications in a variety of industries. This sander can also be configured with discs first and drums last.

Conveyor/working width:	40" (1000mm) / 52" (1350mm) / 64" (1600mm) / 76" (1850mm)
Roller Diameter:	16" (400mm)
Disc Diameter:	10" (250mm)

Options:

7,5 KW (10 HP) Vacuum table
PLC control with memory effect
Cleaning brush with blowing device



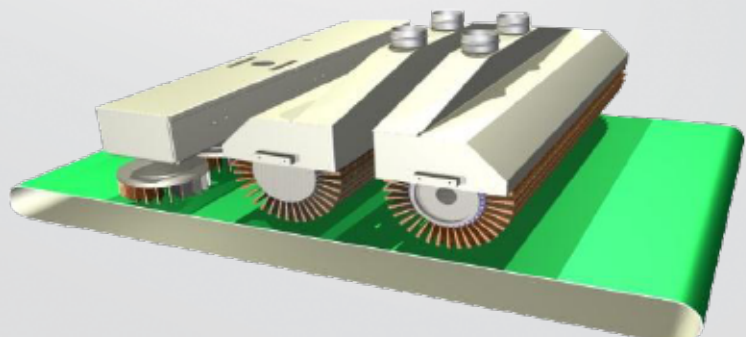
Perfection BBD

The BBD is designed to be adjustable and flexible enough for a job shop or medium size production facilities. It is configured with two lineal rollers and a single disc station. The BBD is a heavy-duty machine that will increase production, consistency and greatly reduce labor. This sander can also be configured with discs first and drums last.

Conveyor/working width:	40" (1000mm) / 52" (1350mm)
Roller Diameter:	12" (300mm)
Disc Diameter:	12" (250mm)

Options:

7,5 KW (10HP) Vacuum table
PLC control with memory effect
Air-knife



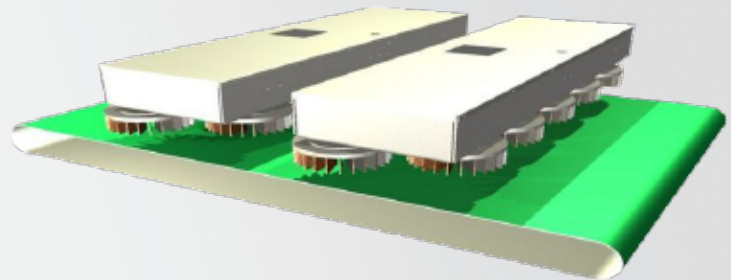
Perfection 2DD

The 2DD machine is the most popular machine for heavy sanding and edge-breaking of flat & profiled parts where a non-linear / non-directional scratch is desired. Very popular in the metal and aerospace industries for de-burring, graining, edge radius and surface preparation for paint, powder coat and anodizing. It is equipped with 2 double oscillating and rotating disc-stations which allows a long working time on the surface! Multiple grits can be installed in the machine for a progression of grits.

Conveyor/working width: 40" (1000mm) / 52" (1350mm) / 64" (1600mm) / 76" (1850mm) / 96" (2450mm)
Disc Diameter: 10" (250mm)

Options:

7,5 KW Vacuum table
PLC control with memory effect
Air-knife



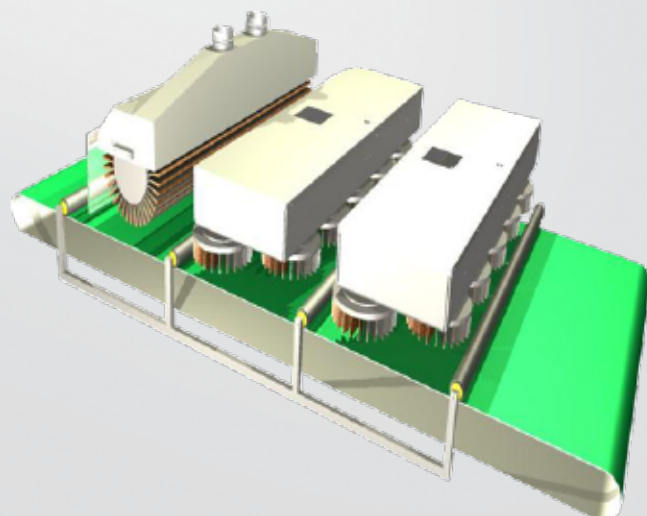
Perfection 2DDB

The 2DDB is very similar to the 2DD with an added roller at the out-feed of the machine which can be used for giving a straight finish or used as a cleaning unit.

Conveyor/working width: 40" (1000mm) / 52" (1350mm) / 64" (1600mm) / 76" (1850mm) / 96" (2450mm)
Disc Diameter: 10" (250mm)

Options:

7,5 KW (10HP) Vacuum table
PLC control with memory effect
Air-knife



Perfection U2B

The U2B machine is equipped with two sanding / scuffing / polishing drums designed to process the bottom of parts. It is often used in combination with any of the Perfection machines. Double the productivity of an existing machine by adding the bottom brush machine and greatly reduce labor.

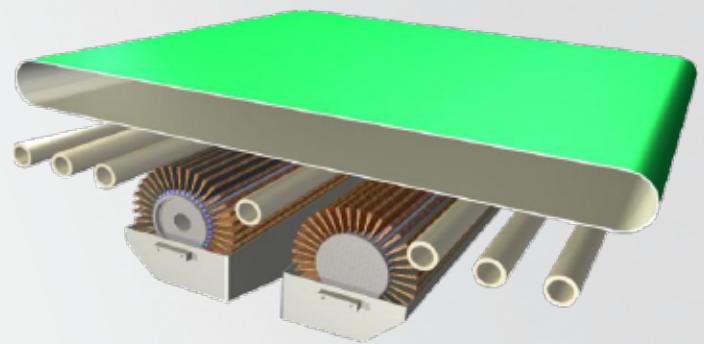
Conveyor/working width: 40" (1000mm) / 52" (1350mm) / 64" (1600mm) / 76" (1850mm)

Roller Diameter: 12" (300mm)

Options:

7,5 KW (10HP) Vacuum table

PLC control with memory effect



Perfection VSDD

The Alpha-Brush vertical brush machine is the most functional, adjustable and effective vertical sander on the market. The machine can be manufactured in a variety configurations to match specific applications in the wood, metal, plastics, glass and composites industry. The sander can process the front side, the back side or both sides of the part at the same time. The Alpha-Brush Vertical brush sander easily integrates with new or existing hang-lines allowing you to process parts without taking them off the hang-line. The Alpha-Brush vertical machine uses a variety of rotating and oscillating discs and is adjustable for disc height, rotation speed, oscillation speed and conveyor feed speed. Let Alpha-Brush work with you to design and implement the best vertical brush solution for your needs.

Part - working height: 52" (1350mm) / 110" (2800mm)

Disc Diameter: 10" (250mm)

Options:

7,5 KW (10HP) Vacuum table

PLC control with memory effect

Cleaning brush with blowing device



Perfection line



Got a specific application?

Give us a call, let us work with you to get
the **Perfect** machine for your needs!

Authorised Dealer