

New UniCut P Optimising Cross Cut Saw



Your experts at:
Michael Weinig (UK) Ltd
5 Blacklands Way
Abingdon Business Park
Abingdon
Oxfordshire
OX14 1DY

Phone +44 (0)1235 557600
Fax +44 (0)1235 538070
info-cutting@weinig.com
www.weinig.com

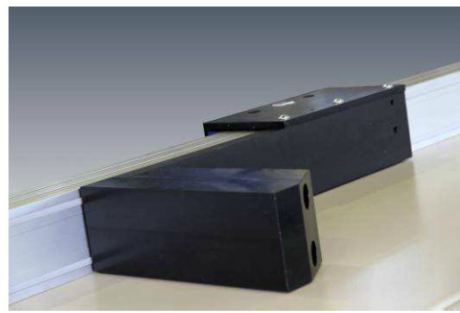
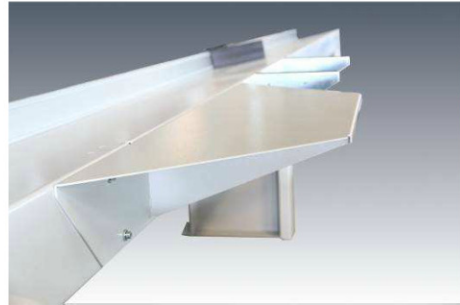


Cross-cut saw for optimised fixed length cutting



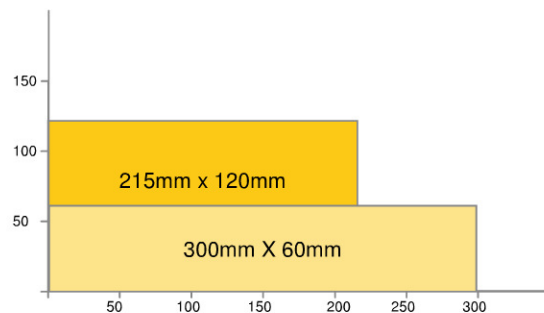
Features:

- Easy operation
- Supporting arms for easy feeding of the machine
- Strong and accurate feed system
- Single and Multiple peice length cutting
- Excellent cost-performance ratio
- Proven technology from the DIMTER optimizing experts
- Quality from the WEINIG GROUP



Technical data:

- Max. cross-section 300 x 60 mm
- Ingoing lengths 80 – 6300 mm
- Feedspeed variable up to 60 m/min
- Saw motor 7.5 kW
- Sawblade 500 mm



Machine Control:

- 200 lengths per cutting list
- Optimised or pattern cutting
- Variable length measuring (option)

