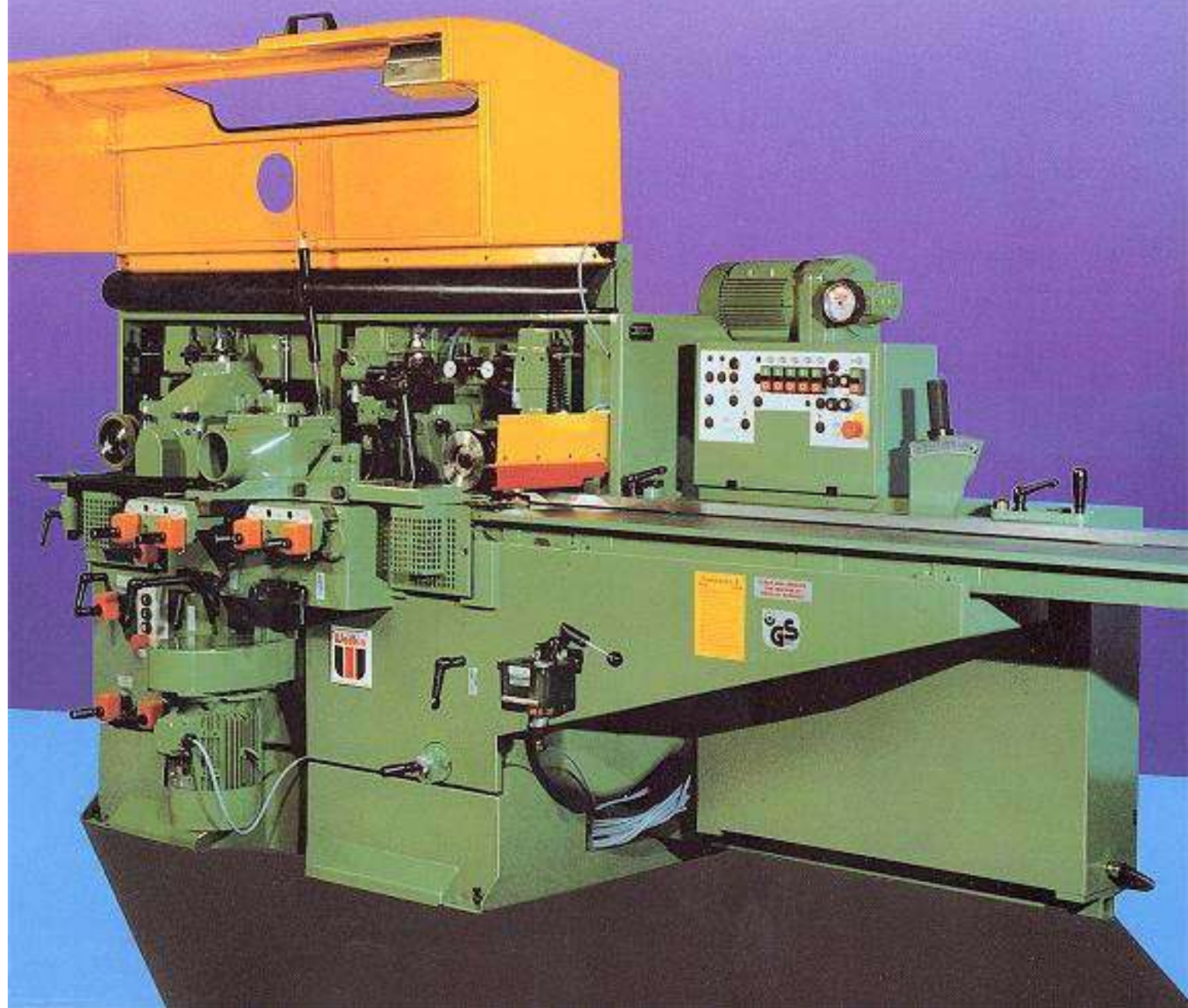




-X-FACTORY

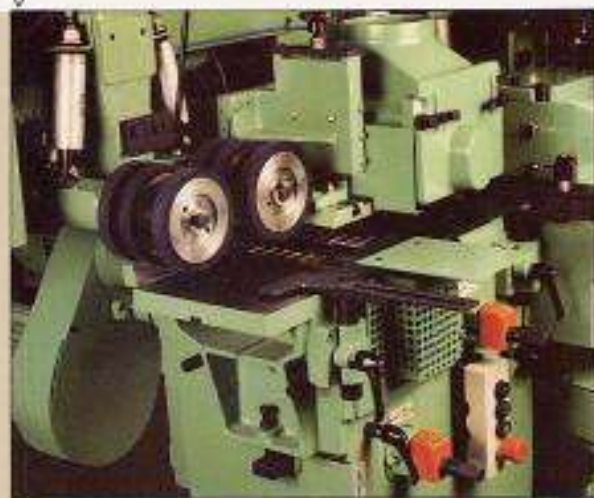
GD SERIES

THROUGHFEED PLANERS AND PLANER MOULDERS



THE NEW ECONOMICAL HIGH QUALITY PLANER MOULDERS FROM WADKIN

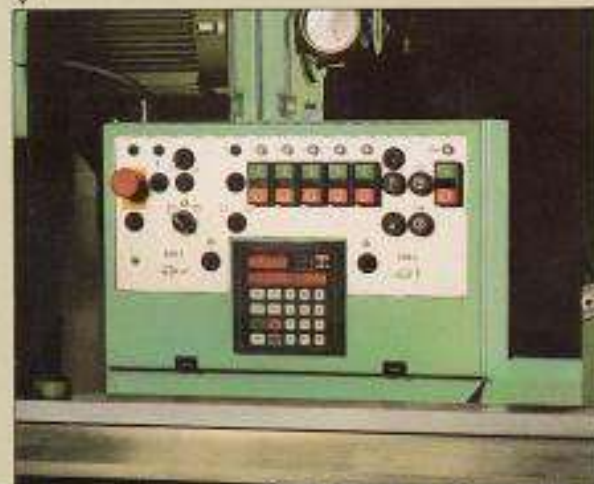
GD5 showing hardened acoustically profiled plates to bottom heads for noise reduction. Outfeed table is fully adjustable. Top and second bottom heads are close coupled.



High quality 4 position Universal Head showing nearside position for complex moulding.



Electronic head positioning by micro-processor with built in 99 position memory controlling nearside head and top head for quick change over.



The Wadkin GD Series represents a range of planers and planer moulders which can be tailored to your exact requirements. The ability to be able to plane, straighten, thickness and mould timber in one pass allows considerable time saving over single operation machines, allowing you to increase productivity and profitability.

The performance of the range is outstanding providing a top quality production up to a finished size of 220mm x 120mm.

The GD machines are the most compact in the Wadkin four-sided planer moulder range and are built to the same high standards of precision engineering as the larger more complex models, to offer you a quality machine with quality output.

Highest Quality Construction - For Highest Quality Output

The robust cast iron construction absorbs vibrations and with a total weight in excess of 2 tonnes, the GD machines ensure maximum stability for perfect finishing. Built to last and, together with the Wadkin name, this makes the GD range a sound investment for both production and resale, as you progress to larger higher output machines.

Three models are currently available: the GD4 and GD5 four and five head planer moulders and the GDU with a 4 position universal head. All models come equipped with a 2 metre infeed table for perfect straightening. A fifth head can be retrofitted to a four head machine at a later date in your own workshop.

All GD models are fitted with individual motors to all cutting heads, providing the power to achieve a perfect finish.

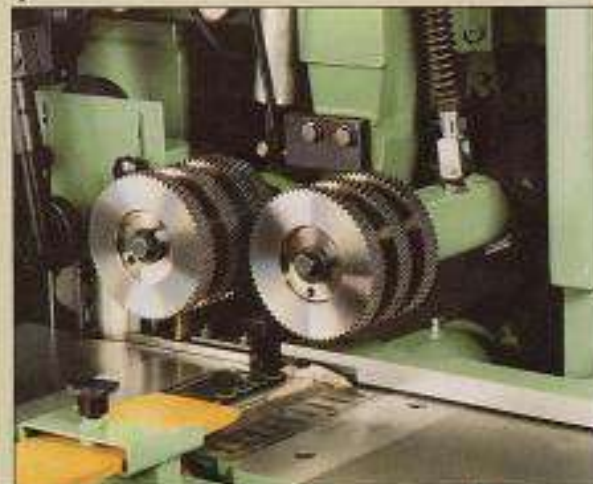
Ease of Operation

All adjustments controls are situated at the front of the machines for easy operation, electric rise and fall to beam, clutch for simultaneous top head adjustment allows rapid setting. A safety cover with electrical interlock is included. (Internal light optional).

Technical Advice

Designed and manufactured in the U.K., by the leading manufacturer of woodworking machinery, all Wadkin machines are backed by a team of experienced technicians. Their help and advice is readily available on a worldwide basis to help you to select the most suitable machine for your needs and to ensure continuous production.

Edge reference cutterblock and fence give superb straightening capabilities.



Y FOUR SIDED

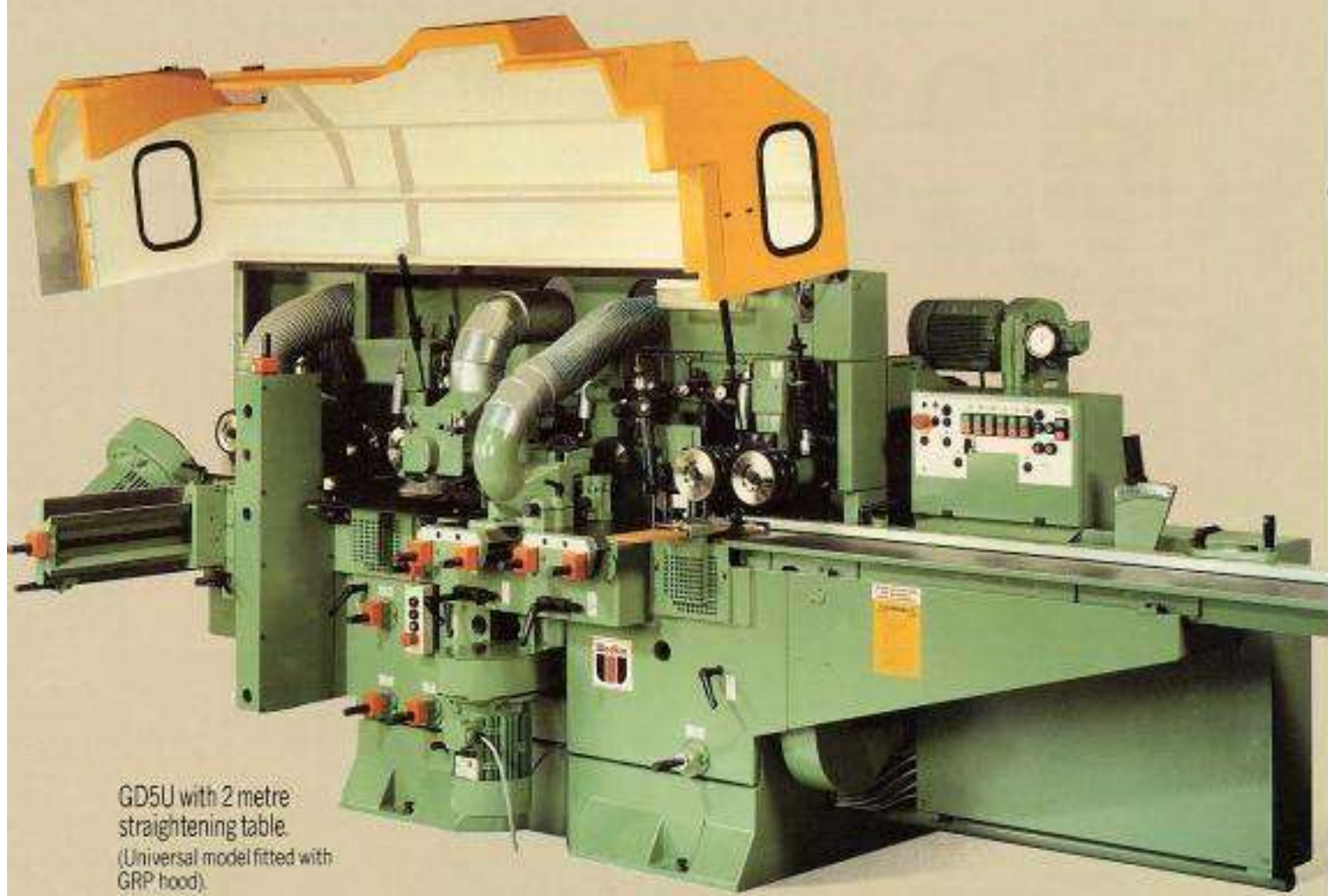
GD FACTORY SERIES

Standard Features Include:

- Individual motors for all cutterheads for optimum power transmission
- Full Cardan drive to feedrolls for smooth maintenance free drive
- Fifth head can be retrofitted cost effectively
- Highest quality four position universal head
- Full profiling facility
- Edge Referencing System for perfect edge straightening
- Electric rise and fall to beam, clutch for simultaneous top head adjustment for rapid setting
- Feed rollers before 1st bottom head with independent rise and fall for easy feeding of short pieces or strip mouldings
- Mechanical digital readouts to head movements for speedy precise setting
- Minimal floor space required
- Individual independent rise and fall to outfeed rollers.

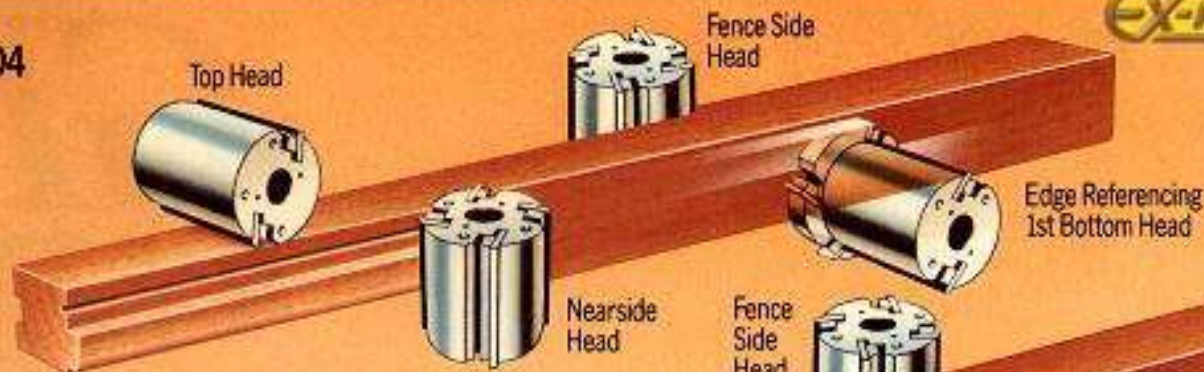


△ GD5 from outfeed end with cover open showing mechanical digital readouts to all main positions.

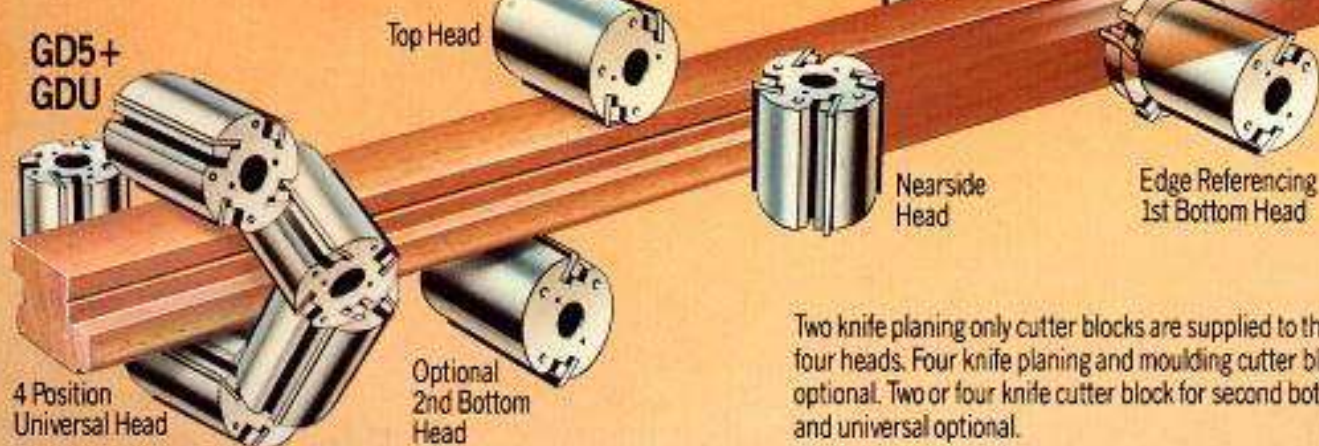


GD5U with 2 metre straightening table.
(Universal model fitted with GRP hood).

GD4

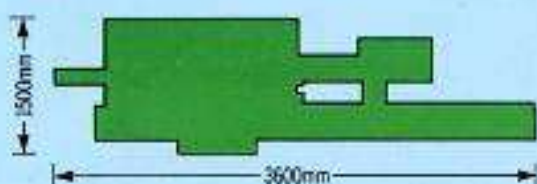


GD5+ GDU

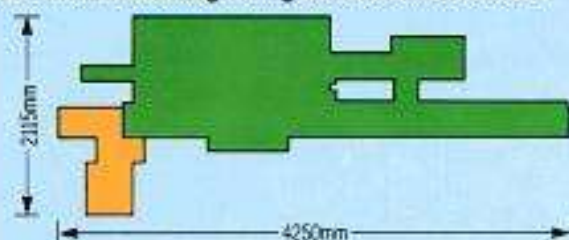


Two knife planing only cutter blocks are supplied to the first four heads. Four knife planing and moulding cutter blocks optional. Two or four knife cutter block for second bottom head and universal optional.

GD4+5 with infeed straightening table



GDU with infeed straightening table and universal head



SPECIFICATIONS

GD SERIES

- Maximum size of timber admitted 230mmx130mm
- Maximum size of finished timber 220mmx120mm
- Infinitely variable feed speeds 6/22m/min
- Spindle diameter 40mm
- Spindle speed 6000 r.p.m.
- Length of infeed straightening table 2m
- Machine bed height 825mm
- Maximum cut on bottom head 10mm
- Maximum cut on fence side head 10mm
- Feed motor power 2kW (3hp)

MOTOR POWERS

- First bottom 5.5kW (7.5hp)
- Fence side head 5.5kW (7.5hp)
- Near side head 5.5kW (7.5hp)
- Top head 7.5kW (10hp)
- Second bottom head 5.5kW (7.5hp)
- Universal 5.5kW (7.5hp)

CUTTING CIRCLES

- All heads except first bottom min 100mm max 195mm
- Basic planing moulding cutting circle 125mm

OPTIONAL FEATURES

- Electronic dial-a-size
- Pneumatic loading to feed rollers in lieu of spring
- Manual bed lubrication
- Star delta starting to any head

- Second bottom head can be added at a later date to GD4
- Light inside front cover
- 11kW (15hp) motor with star delta to top head (except GDP)
- Radial chipbreaker to Top head