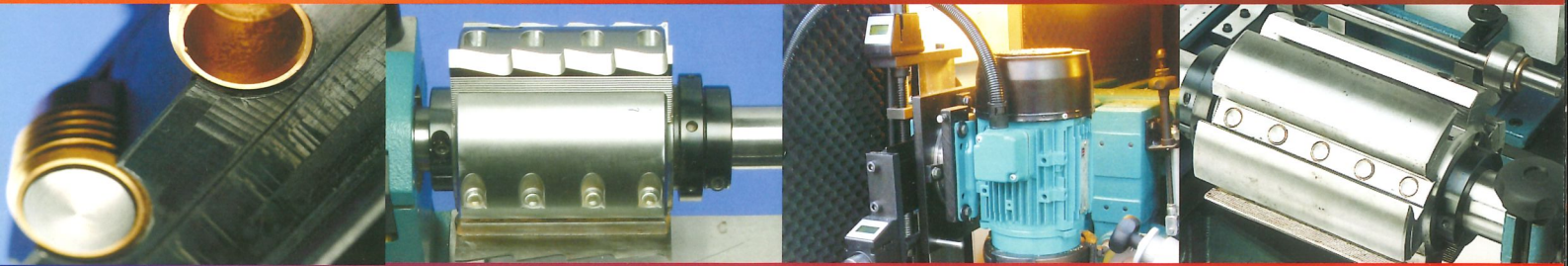


**WADKIN**MACHINES

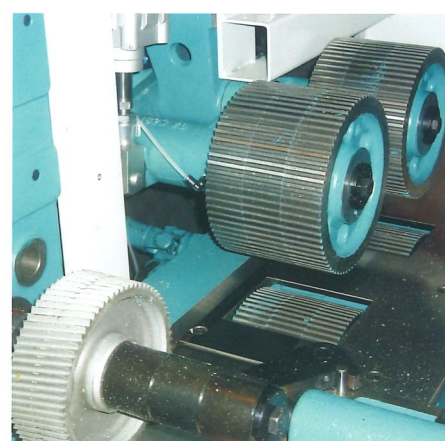
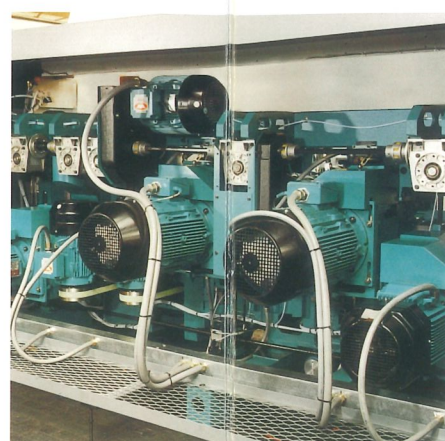
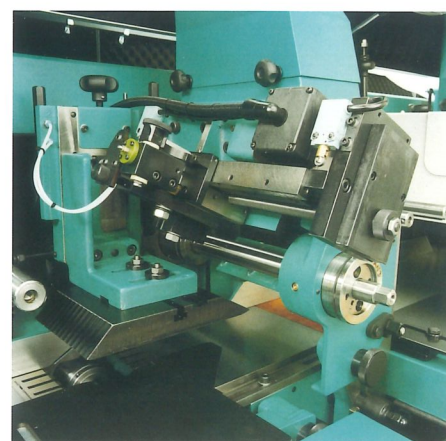
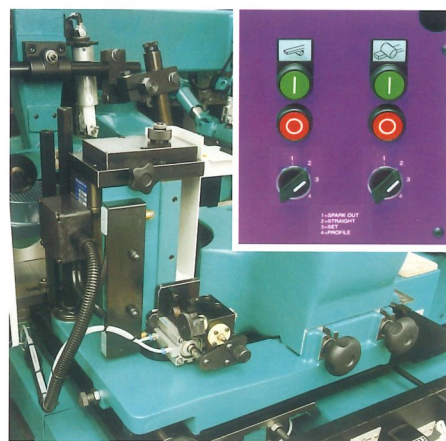


# High Speed Jointed Throughfeed Planer Moulder





# High Speed Jointed Throughfeed Planer Moulder



Top head manual jointer - combination straight and profile jointer

Optional 're-matic' jointers for remote operation shown with control panel (inset)

Optional 're-matic' jointer on top head for both straight or profile jointing

Heavy duty gearbox and cardan drive with central electronic feed drive

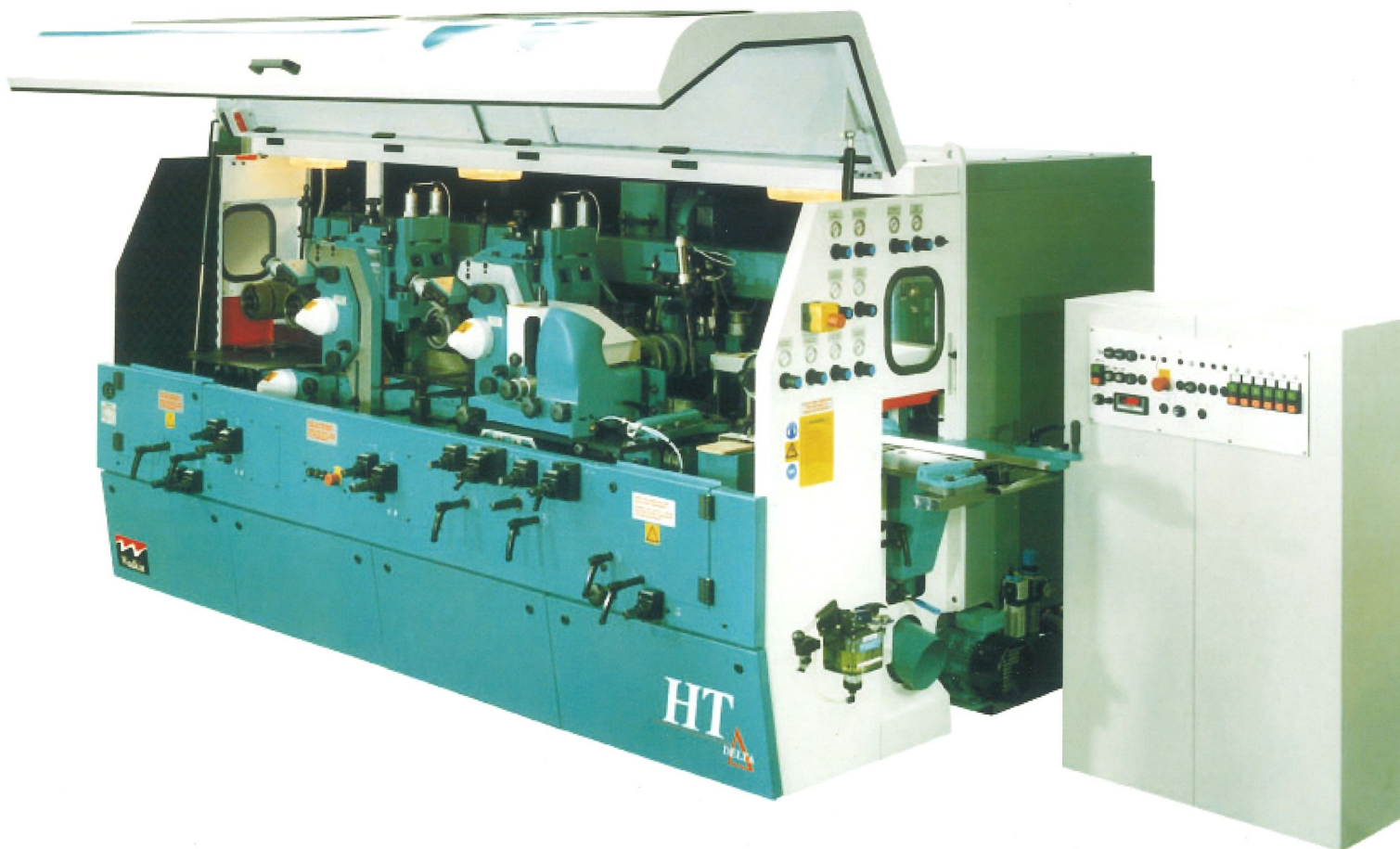
Short infeed table with the unique Wadkin PHT nip roller system giving excellent feed characteristics

Optional heavy duty push feed works

Top head chipbreaker unit is pneumatically controlled. Also highlighted is driven bed roller between top heads

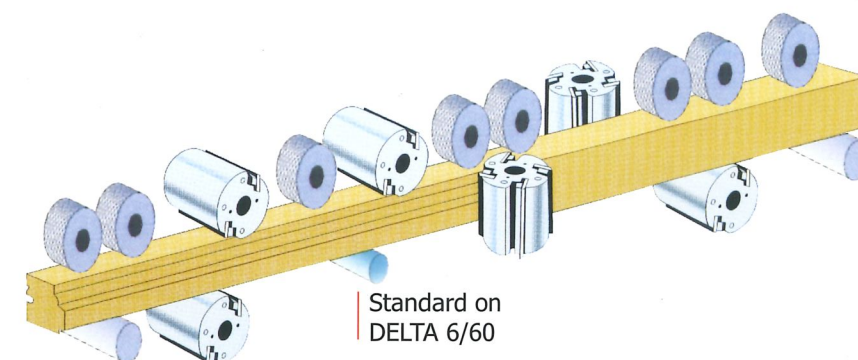
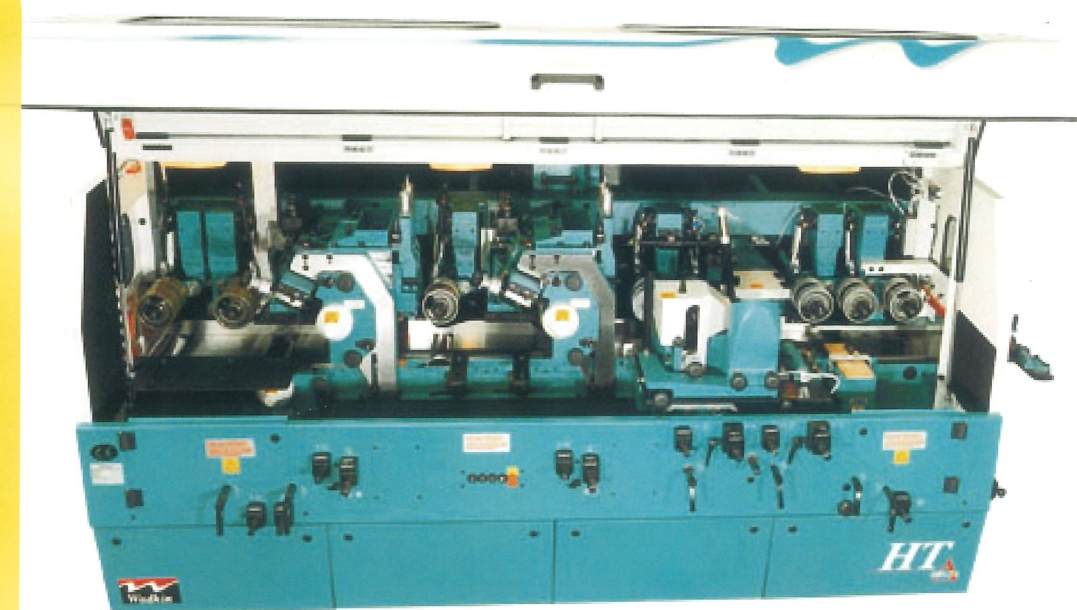
Delta six head moulders are affordable jointed machines developed to meet the needs of companies wishing to increase production and improve quality.

The operator friendly DELTA is designed for quick set-up and flexibility of operation. High specification features are standard with the DELTA and combined with traditional engineering excellence, give life long reliability and high quality output.



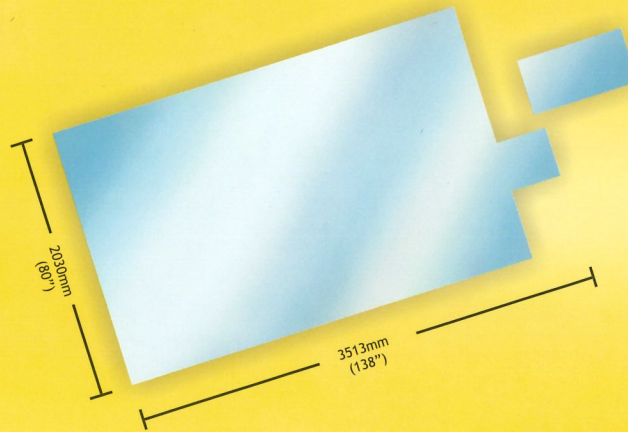
## features

- 6 head configuration
- Heavy duty cast iron frame
- Hard chrome plated bed throughout machine
- Heavy duty pneumatically linked PHT infeed system
- Manual or optional electronic 're-matic' jointers
- Combination straight and profile jointers
- Full width driven bed rollers
- Pneumatics to both top head head chipbreakers, pad pressures and idle bed rollers
- Optional push feed works ensuring that the moulder is capable of high speed intensive production through unrivalled feeding power



Standard on DELTA 6/60





## Technical Information

		DELTA 6 /42	DELTA 6 /60
Maximum finished size	Standard	220 x 120mm (8 <sup>5</sup> / <sub>8</sub> " x 4 <sup>3</sup> / <sub>4</sub> ")	
Maximum finished size	Optional	235 x 120mm (9 <sup>1</sup> / <sub>4</sub> " x 4 <sup>3</sup> / <sub>4</sub> ")	
Minimum finished size		15 x 6mm (5 <sup>7</sup> / <sub>8</sub> " x 1 <sup>1</sup> / <sub>4</sub> ")	
Feed Speed		6-42 m/min (18-140 ft min)	10-60 m/min (33-200 ft min)
Feed Motor Power		7.5 kW (10 HP)	11 kW (15 HP)
Spindle Diameters (and options)		40mm, 1 <sup>13</sup> / <sub>16</sub> " (50mm)	
Spindle Speeds		6000 rpm	
Maximum Cutting Circles	First Bottom Head	160mm (6 <sup>1</sup> / <sub>4</sub> ")	
	Fence Side Head	205mm (8")	
	Near Side Head	205mm (8")	
	First Top Head	250mm (10")	
	Second Top Head	250mm (10")	
	Second Bottom Head	250mm (10")	
Minimum Cutting Circles	All Heads	125mm (5")	
Maximum finished size	First Bottom Head	11 kW (15 HP)	11 kW (15 HP)
Motor Powers	Fence Side Head	7.5 kW (10 HP)	11 kW (15 HP)
	Near Side Head	7.5 kW (10 HP)	11 kW (15 HP)
	First Top Head	15 kW (20 HP)	18.5 kW (25 HP)
	Second Top Head	15 kW (20 HP)	18.5 kW (25 HP)
	Second Bottom Head	11 kW (15 HP)	15 kW (20 HP)

Wadkin Group Ltd  
Franks Road, Hilltop Industrial Park  
Bardon, Leicestershire  
LE67 1TT

Telephone 0870 850 9111  
Overseas tel +44 (0)1530 513 500  
Fax 0870 240 0575  
Website [www.wadkingroup.com](http://www.wadkingroup.com)  
Email [info@wadkingroup.com](mailto:info@wadkingroup.com)



The details given in this leaflet are not to be regarded as binding. Certain illustrations show guarding removed for clarity.

